

LEGEND:
 ASPHALT PAVEMENT REPLACEMENT
 CONCRETE DRIVE REPLACEMENT

CATCH BASIN CB 2-2B
 STA. 100+41, 16.4 RT.
 RIM 587.2
 12" INV. S 582.95

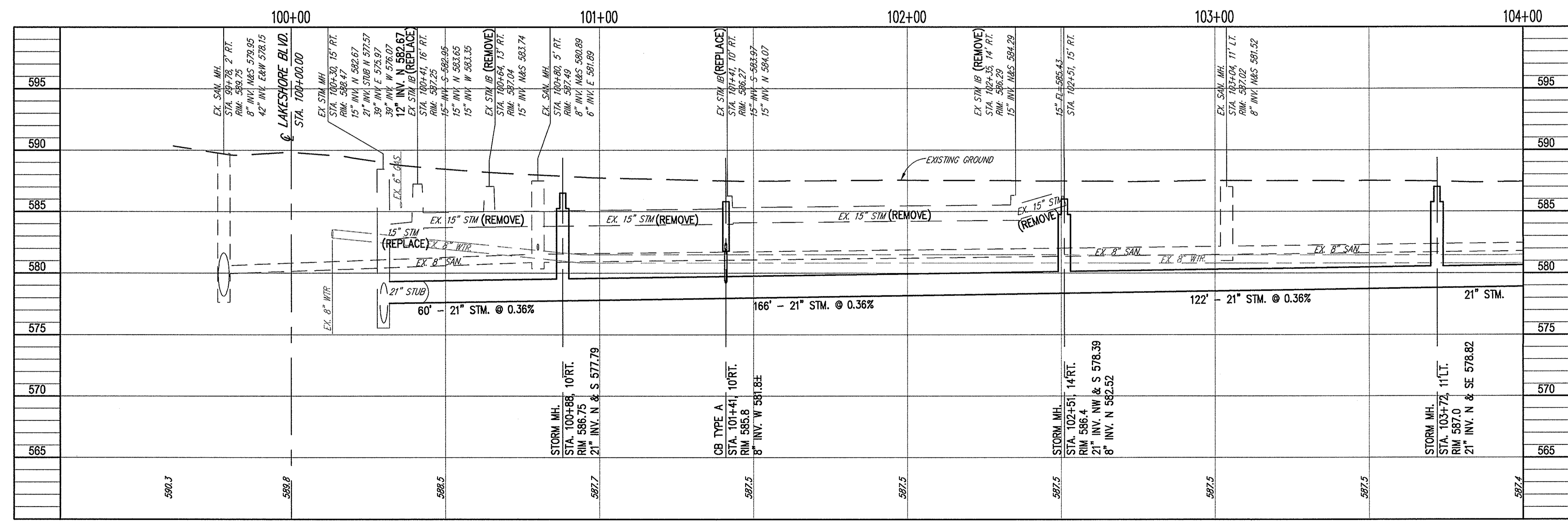
STORM MH.
 STA. 100+88, 10 RT.
 CONC. DRIVEWAY APRON
 REPLACEMENT PER DETAIL

CB TYPE A
 STA. 101+41, 10 RT.
 RIM 586.2
 12" INV. E 583.7

CONC. DRIVEWAY APRON
 REPLACEMENT PER DETAIL

STORM MH.
 STA. 102+51, 14 RT.

CB TYPE A
 STA. 103+02, 20.3 RT.
 RIM 585.5
 8" INV. S 583.0
 (CONNECT EXIST. PIPES)



Copyright - Jul 08, 2010 - 4:14pm, CT Consultants, Inc. Layout: 4 by: schneidl
 Drawing name: H:\2010\10088\dwg\10088PP-YT.dwg

CT Consultants
 engineers | architects | planners
 8150 Sterling Court Mentor, Ohio 44060
 440.951.9000 www.ctconsultants.com

REV. NO.	DESCRIPTION	DATE	BY	CHK'D.

EDISON DRIVE & MONDAMIN DRIVE
STORM SEWER IMPROVEMENTS
 CITY OF EASTLAKE, COUNTY OF LAKE, OHIO

DATE: JULY 2010
 DRAWN BY: LML
 CHECKED BY: TRL
 APPROVED BY: TRL
 F.B. No. 1221 Pg. 110-186

PLAN AND PROFILE
EDISON DRIVE
 STA. 100+00 TO STA. 104+00

SCALE	
HOR.	AS NOTED
VERT.	
CONTRACT No.	
10088	
SHEET NO.	OF
4	11