

NOTE
THE PROJECT COORDINATE SYSTEM IS BASED UPON:

HORIZONTAL DATUM - NORTH AMERICAN DATUM OF 1983 (NAD83)
PROJECT COORDINATES HAVE BEEN ADJUSTED
BY DIVIDING GEODETIC COORDINATES BY A
CONSTANT SCALE FACTOR OF 0.9999570724

VERTICAL DATUM - NATIONAL GEODETIC VERTICAL DATUM 1988 (NAVD 1988)

BENCH MARKS

TOP IRON PIPES SET
ELEVATIONS AT RIGHT IN PROJECT
CONTROL COORDINATE CHART

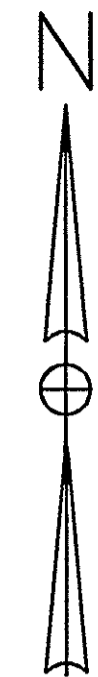
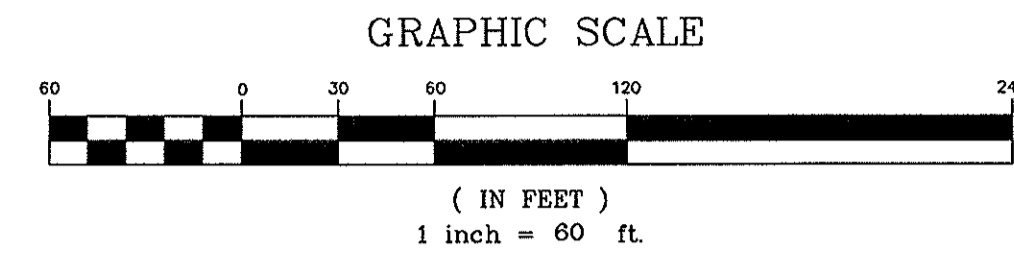
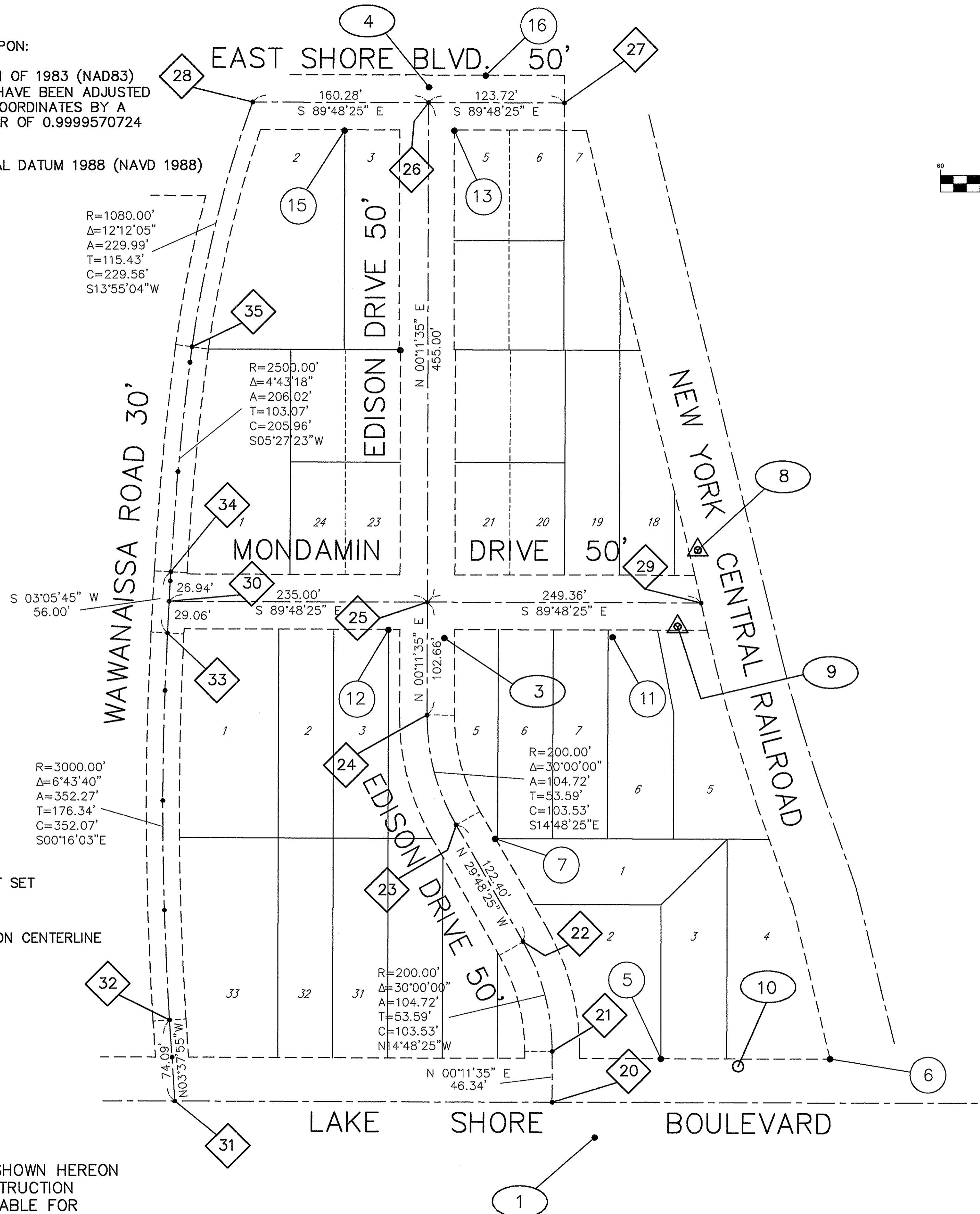
DESCRIPTION LEGEND

- 1 - MON. BOX
- 2 - IRON PIN SET
- 3 - IRON PIN FOUND
- 4 - IRON PIPE FOUND
- 5 - DRILL HOLE
- 6 - HUB
- 7 - P. K. NAIL
- 8 - CONC. MON
- 9 - GPS POINTS
- 10 - MISC. CTL

LEGEND

- GPS CONTROL POINT SET
- BASELINE CONTROL / REFERENCE POINT SET
- EXISTING SURVEY MONUMENTATION
- CALCULATED LOCATION OF CONSTRUCTION CENTERLINE

NOTE
THE SURVEY AND STREET ALIGNMENTS SHOWN HEREON
WAS OBSERVED IN THE FIELD FOR CONSTRUCTION
PURPOSES ONLY AND MAY NOT BE SUITABLE FOR
PROPERTY LINE SURVEYS OR OTHER PURPOSES.



CONTROL FILE

H: \2008\08109\SURVEY\08109CTL.TXT

PROJECT CONTROL COORDINATES

PNT	NORTH	EAST	ELEV.	DESC.
1,	729220.4900,	2259645.6640,	589.79,	2
2,	729219.8120,	2258931.5520,	614.72,	2
3,	729675.1445,	2259509.0188,	586.89,	2
4,	730176.8091,	2259495.5176,	587.16,	2
5,	729292.1171,	2259705.9352,	587.31,	3
6,	729291.6971,	2259860.3184,	587.39,	3
7,	729492.6051,	2259555.3516,	586.90,	3
8,	729755.4297,	2259740.0194,	586.79,	6
9,	729685.4430,	2259721.5443,	586.98,	6
10,	729285.1142,	2259776.3326,	587.52,	10
11,	729675.7833,	2259662.3497,	586.01,	3
12,	729682.6739,	2259458.0743,	586.64,	3
13,	730137.1276,	2259518.7427,	586.78,	3
14,	729937.4007,	2259469.1875,	586.64,	3
15,	730137.2881,	2259418.6844,	587.52,	3
16,	730187.3391,	2259547.2262,	587.25,	3
20,	729252.4509,	2259606.8010,	0.00,	10
21,	729298.7907,	2259606.9571,	0.00,	10
22,	729398.8804,	2259580.4994,	0.00,	10
23,	729505.0876,	2259519.6569,	0.00,	10
24,	729605.1773,	2259493.1992,	0.00,	10
25,	729707.8367,	2259493.5451,	0.00,	10
26,	730162.8341,	2259495.0785,	0.00,	10
27,	730162.4172,	2259618.7978,	0.00,	10
28,	730163.3743,	2259334.8013,	0.00,	10
29,	729706.9963,	2259742.9037,	0.00,	10
30,	729708.6287,	2259258.5465,	0.00,	10
31,	729253.6085,	2259263.3139,	0.00,	10
32,	729327.5497,	2259258.6206,	0.00,	10
33,	729679.6111,	2259256.9770,	0.00,	10
34,	729735.5293,	2259260.0014,	0.00,	10
35,	729940.5561,	2259279.5859,	0.00,	10

Copyright - Jul 08, 2010 - 4:15pm CT Consultants, Inc. Drawing name: H:\2010\10088\dwg\10088SC.dwg Layout: 11 by: schneid

CT Consultants
engineers | architects | planners
8150 Sterling Court Mentor, Ohio 44060
440.951.9000 www.ctconsultants.com

REV. NO.	DESCRIPTION	DATE	BY	CHK'D.

EDISON DRIVE & MONDAMIN DRIVE
STORM SEWER IMPROVEMENTS
CITY OF EASTLAKE, COUNTY OF LAKE, OHIO

DATE: JULY 2010
DRAWN BY: LML
CHECKED BY: TRL
APPROVED BY: TRL
F.B. No. 1221 Pg. 110-156

SURVEY CONTROL SHEET

SCALE	
HOR.	AS NOTED
VERT.	
CONTRACT No.	
10088	
SHEET NO.	OF
11	11