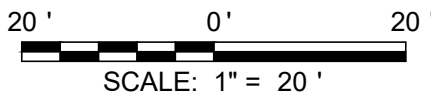


- LEGEND & KEYNOTES**
- ITEM 254 - PAVEMENT PLANING
 - ITEM 253 - FULL DEPTH PAVEMENT REMOVAL AND FLEXIBLE REPLACEMENT
 - ITEM 452 - 6" NON-REINFORCED CONCRETE APRONS & WALK
 - ITEM 609 - CURB REPLACEMENT

- 1 ADJUST TO GRADE
- 2 REBUILD TOP 18" - USE NEW PRE-CAST TOP
- 3 ITEM 608 - NEW CURB RAMP. SINGLE INSERT ONLY - NEW CURB RAMP TYPE TO BE DETERMINED IN THE FIELD BY THE CITY.

- NOTES**
- THE FINAL BASE REPAIR AREAS WILL BE MARKED BY THE CITY WHEN THE PLANING OPERATIONS HAVE BEEN COMPLETED.
 - THE FINAL CURB REPLACEMENT LIMITS AND WORK LIMITS WILL BE MARKED PRIOR TO BEGINNING CONSTRUCTION.
 - THE FINAL LOCATIONS AND LIMITS FOR THE DRIVEWAY APRONS THAT ARE TO BE REMOVED AND REPLACED WILL BE DETERMINED PRIOR TO BEGINNING CONSTRUCTION.
 - PROVIDE BUTT JOINT AT BEGINNING AND END OF PROJECT AS NEEDED.
 - CONTRACTOR TO GIVE CITY OLD STORM CASTINGS. DELIVER TO PUBLIC WORKS FACILITY.
 - SEE DOWNSPOUT DETAIL, TYPICAL. ALL DOWNSPOUT LOCATIONS NOT SHOWN ON DRAWING.

- STRIPING LEGEND**
- CL CENTER LINE, 4" DOUBLE SOLID
 - SL STOP LINE
 - LW LANE WORD
 - LA LANE ARROW
 - CH CHANNELIZING LINE, 8"
 - EL EDGE LINE, 4"
 - CW CROSSWALK, 8"
 - CV CHVERON, 8"
 - LD LOOP DETECTOR

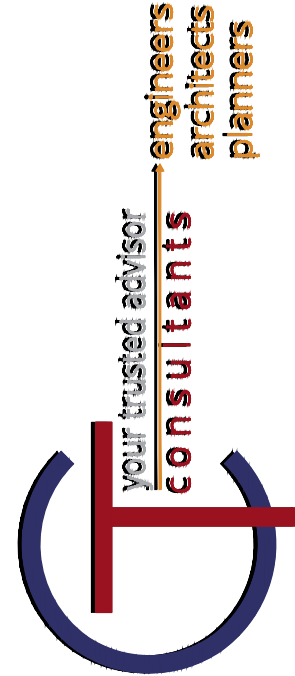


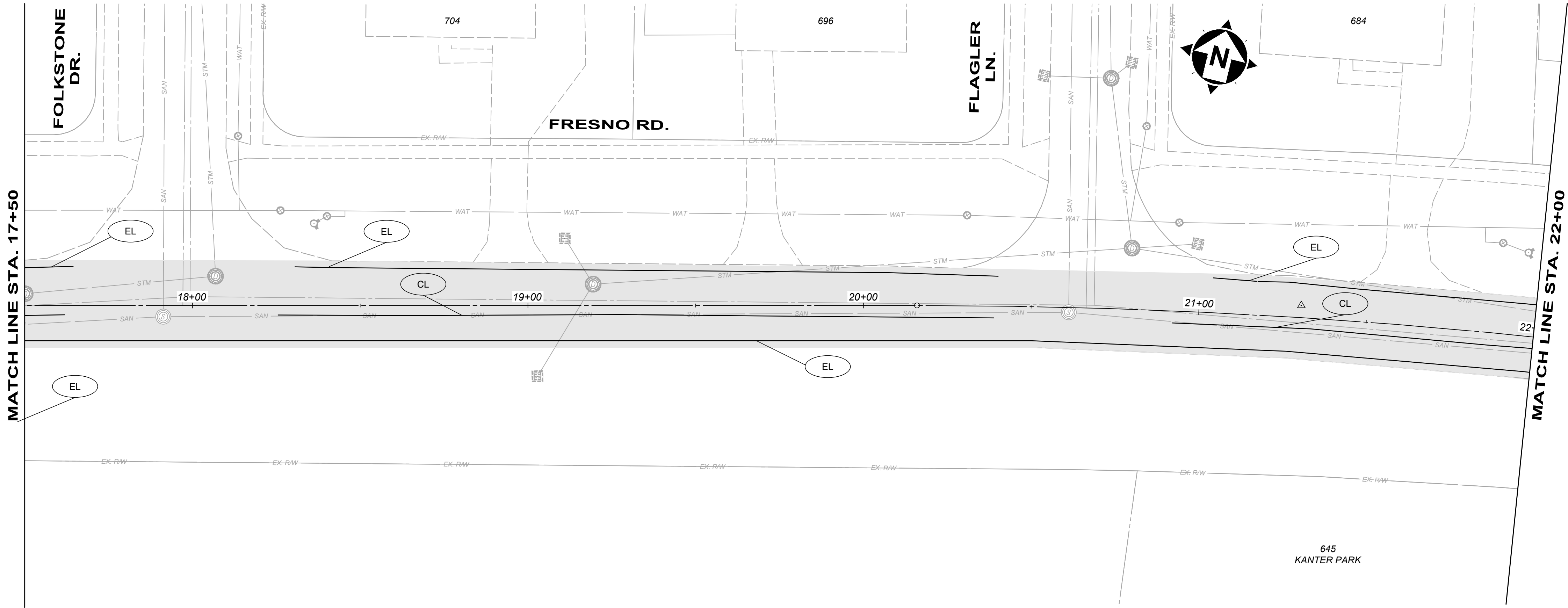
2020 STREET PROGRAM
CITY OF FOREST PARK
HAMILTON COUNTY, OH

FRESNO ROAD
BASE BID

PROJECT NO. 200070	
DISCIPLINE CIVIL	
SHEET NAME C1	
SHEET 1	OF 7

ISSUED FOR:	BID	NO	REVISION	DATE
ISSUE DATE:	01/29/20	Δ		XXX/18
SCALE:	AS SHOWN			
DESIGNED BY:	MMYA			
DRAWN BY:	MMYA			
CHECKED BY:	FTWE			

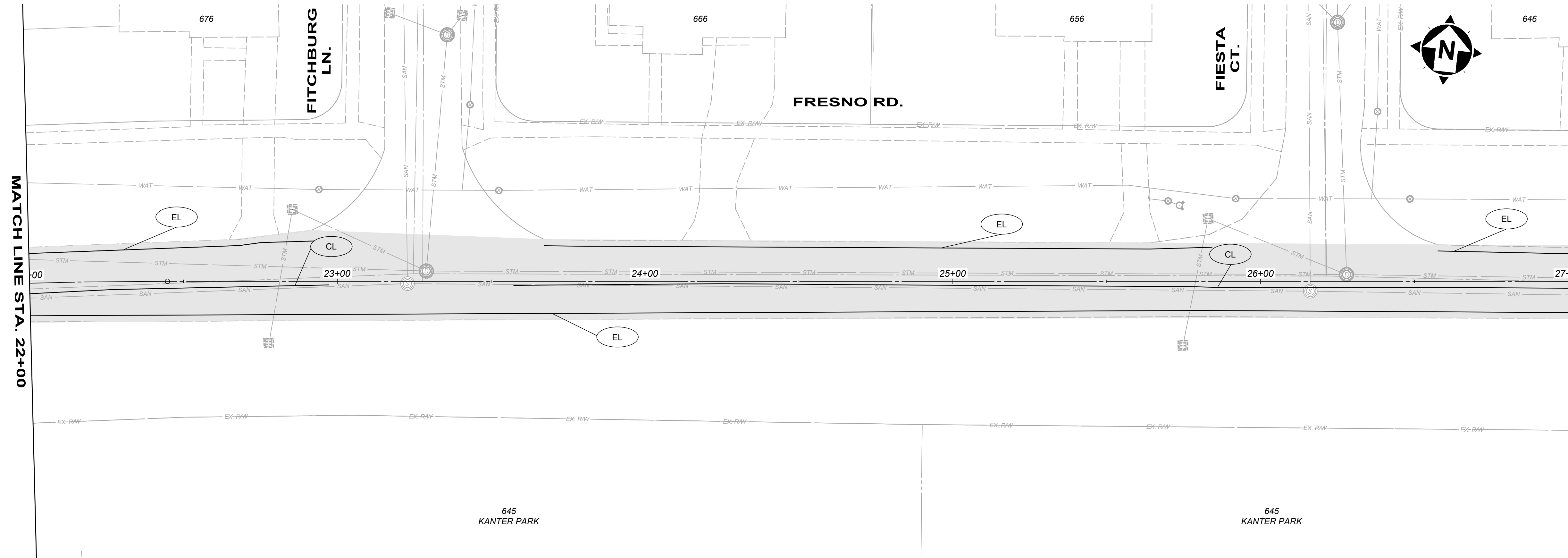




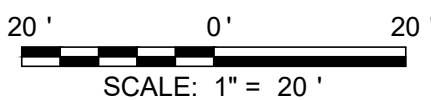
- LEGEND & KEYNOTES**
- ITEM 254 - PAVEMENT PLANING
 - ITEM 253 - FULL DEPTH PAVEMENT REMOVAL AND FLEXIBLE REPLACEMENT
 - ITEM 452 - 6" NON-REINFORCED CONCRETE APRONS & WALK
 - ITEM 609 - CURB REPLACEMENT

- ADJUST TO GRADE
- REBUILD TOP 18" - USE NEW PRE-CAST TOP
- ITEM 608 - NEW CURB RAMP. SINGLE INSERT ONLY - NEW CURB RAMP TYPE TO BE DETERMINED IN THE FIELD BY THE CITY.

- NOTES**
- THE FINAL BASE REPAIR AREAS WILL BE MARKED BY THE CITY WHEN THE PLANING OPERATIONS HAVE BEEN COMPLETED.
 - THE FINAL CURB REPLACEMENT LIMITS AND WORK LIMITS WILL BE MARKED PRIOR TO BEGINNING CONSTRUCTION.
 - THE FINAL LOCATIONS AND LIMITS FOR THE DRIVEWAY APRONS THAT ARE TO BE REMOVED AND REPLACED WILL BE DETERMINED PRIOR TO BEGINNING CONSTRUCTION.
 - PROVIDE BUTT JOINT AT BEGINNING AND END OF PROJECT AS NEEDED.
 - CONTRACTOR TO GIVE CITY OLD STORM CASTINGS. DELIVER TO PUBLIC WORKS FACILITY.
 - SEE DOWNSPOUT DETAIL, TYPICAL. ALL DOWNSPOUT LOCATIONS NOT SHOWN ON DRAWING.



- STRIPING LEGEND**
- CL CENTER LINE, 4" DOUBLE SOLID
 - SL STOP LINE
 - LW LANE WORD
 - LA LANE ARROW
 - CH CHANNELIZING LINE, 8"
 - EL EDGE LINE, 4"
 - CW CROSSWALK, 8"
 - CV CHVERON, 8"

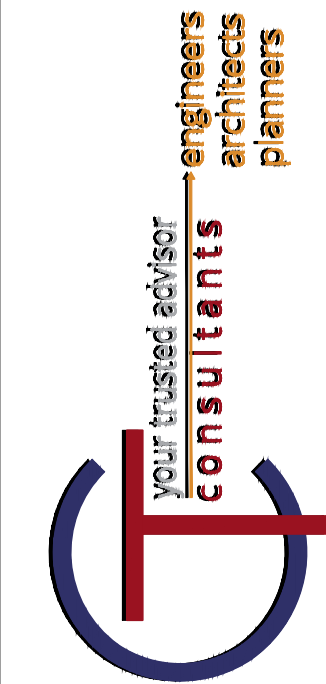


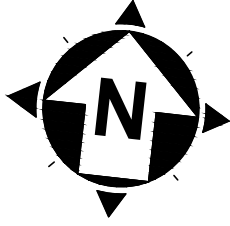
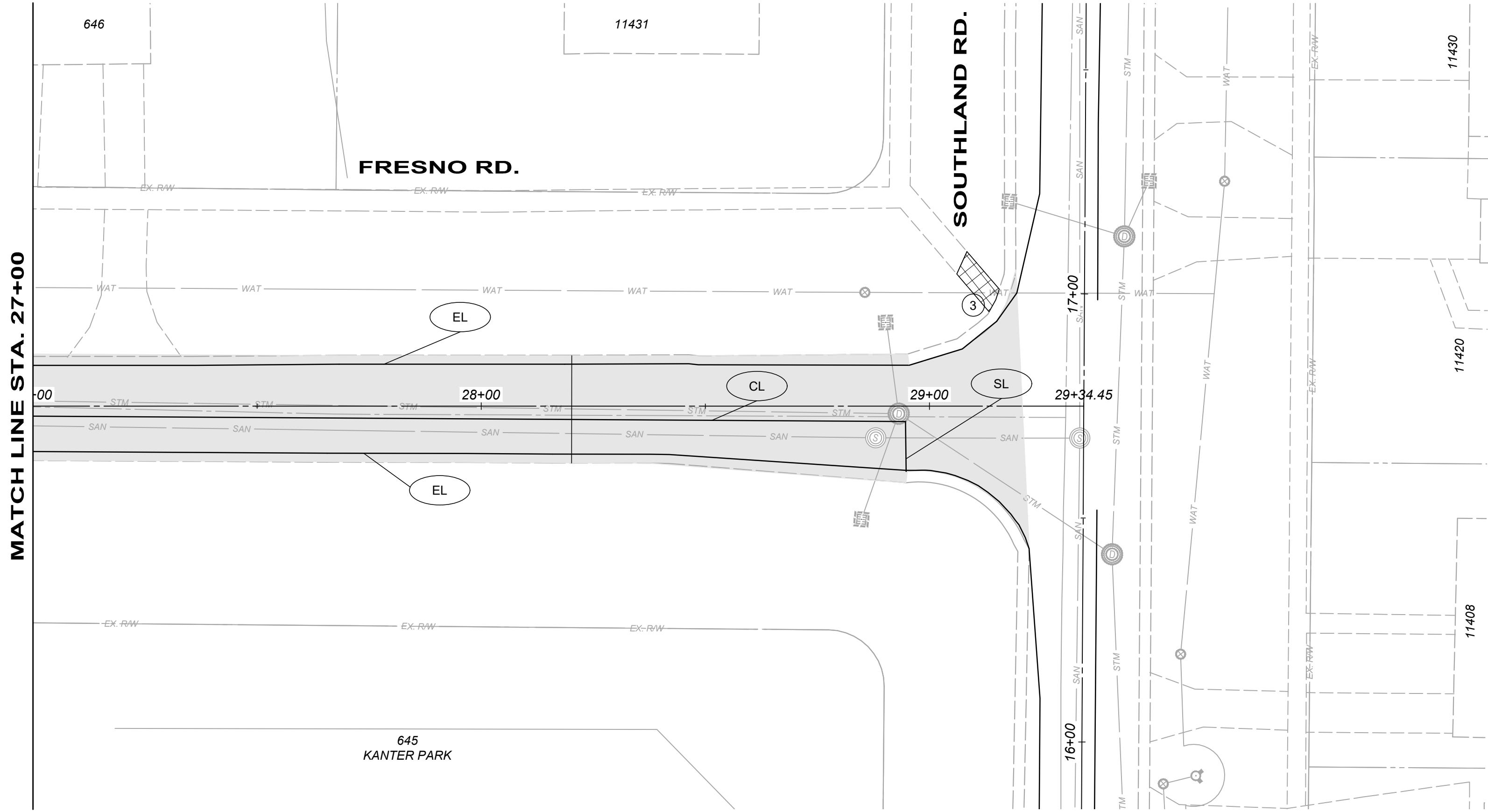
2020 STREET PROGRAM
CITY OF FOREST PARK
HAMILTON COUNTY, OH

FRESNO ROAD
BASE BID

PROJECT NO. 200070	
DISCIPLINE CIVIL	
SHEET NAME C2	
SHEET 2	OF 7

ISSUED FOR:	BID	NO	REVISION	DATE
ISSUE DATE:	01/29/20	Δ		XXX/18
SCALE:	AS SHOWN			
DESIGNED BY:	MMYA			
DRAWN BY:	MMYA			
CHECKED BY:	FTWE			





LEGEND & KEYNOTES

- ITEM 254 - PAVEMENT PLANING
- ITEM 253 - FULL DEPTH PAVEMENT REMOVAL AND FLEXIBLE REPLACEMENT
- ITEM 452 - 6" NON-REINFORCED CONCRETE APRONS & WALK
- ITEM 609 - CURB REPLACEMENT

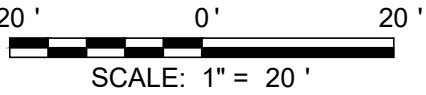
- 1 ADJUST TO GRADE
- 2 REBUILD TOP 18" - USE NEW PRE-CAST TOP
- 3 ITEM 608 - NEW CURB RAMP. SINGLE INSERT ONLY - NEW CURB RAMP TYPE TO BE DETERMINED IN THE FIELD BY THE CITY.

NOTES

1. THE FINAL BASE REPAIR AREAS WILL BE MARKED BY THE CITY WHEN THE PLANING OPERATIONS HAVE BEEN COMPLETED.
2. THE FINAL CURB REPLACEMENT LIMITS AND WORK LIMITS WILL BE MARKED PRIOR TO BEGINNING CONSTRUCTION.
3. THE FINAL LOCATIONS AND LIMITS FOR THE DRIVEWAY APRONS THAT ARE TO BE REMOVED AND REPLACED WILL BE DETERMINED PRIOR TO BEGINNING CONSTRUCTION.
4. PROVIDE BUTT JOINT AT BEGINNING AND END OF PROJECT AS NEEDED.
5. CONTRACTOR TO GIVE CITY OLD STORM CASTINGS. DELIVER TO PUBLIC WORKS FACILITY.
6. SEE DOWNSPOUT DETAIL, TYPICAL. ALL DOWNSPOUT LOCATIONS NOT SHOWN ON DRAWING.

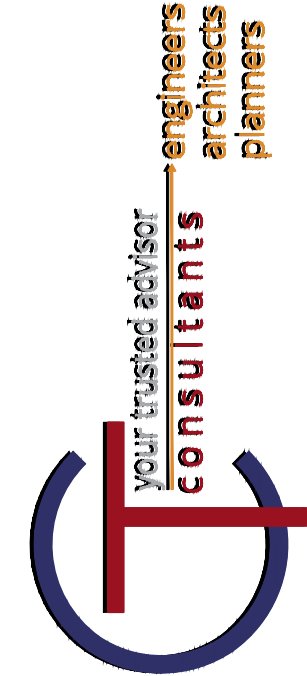
STRIPING LEGEND

- CL CENTER LINE, 4" DOUBLE SOLID
- SL STOP LINE
- LW LANE WORD
- LA LANE ARROW
- CH CHANNELIZING LINE, 8"
- EL EDGE LINE, 4"
- CW CROSSWALK, 8"
- CV CHVERON, 8"
- LD LOOP DETECTOR



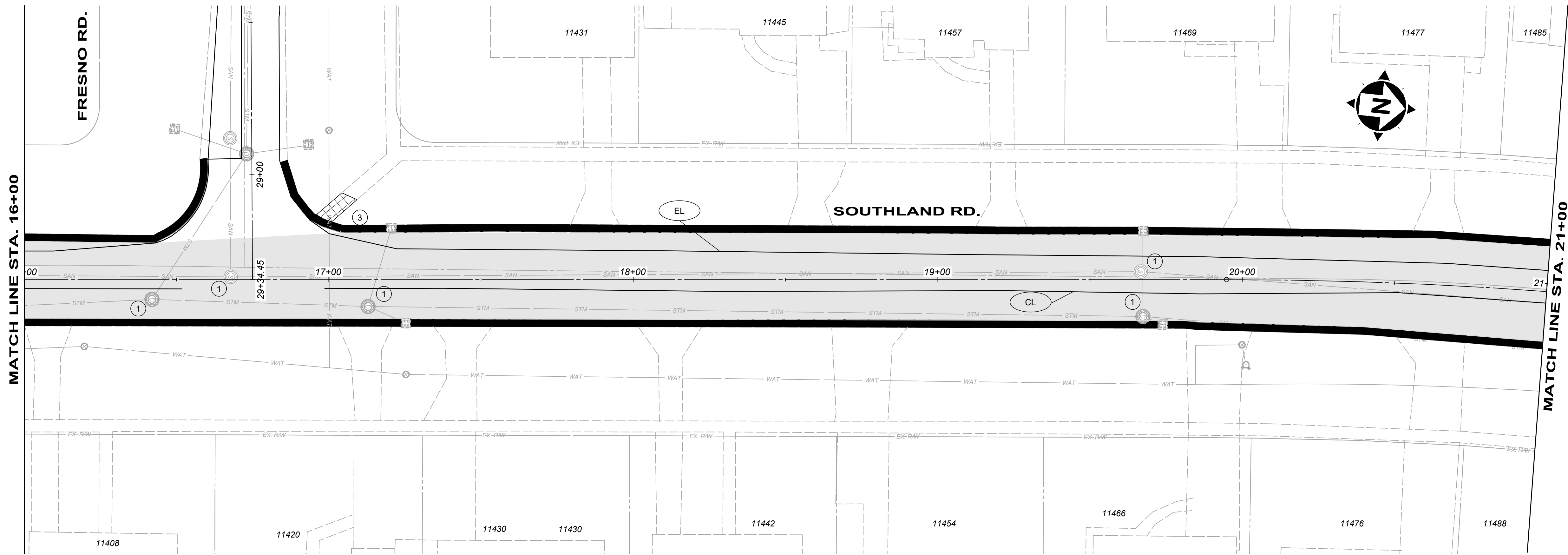
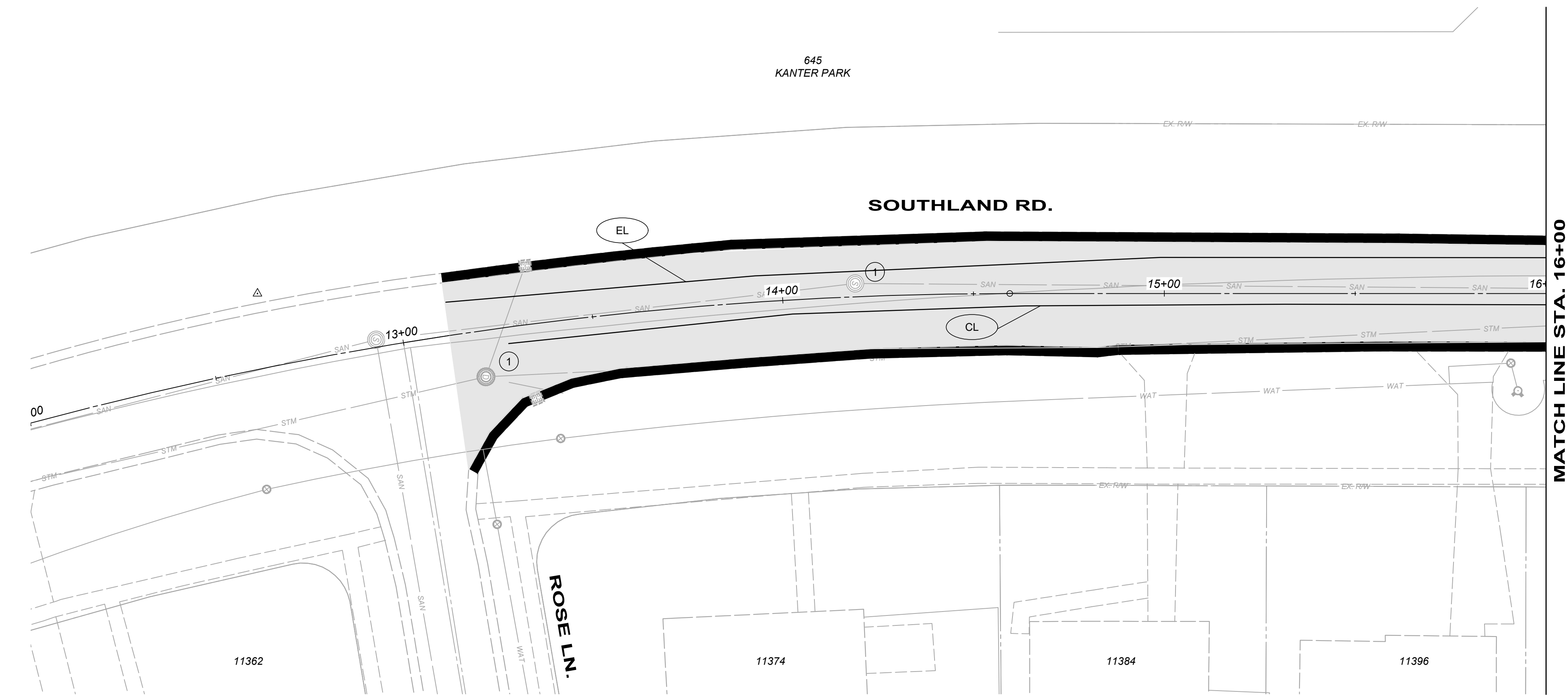
2020 STREET PROGRAM
CITY OF FOREST PARK
HAMILTON COUNTY, OH

FRESNO ROAD
BASE BID



ISSUED FOR:	BID	NO	REVISION	DATE
ISSUE DATE:	01/29/20	1		XXX/18
SCALE:	AS SHOWN			
DESIGNED BY:	MMYA			
DRAWN BY:	MMYA			
CHECKED BY:	FTWE			

PROJECT NO. 200070	
DISCIPLINE CIVIL	
SHEET NAME C3	
SHEET 3	OF 7

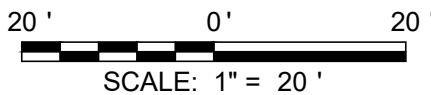


- LEGEND & KEYNOTES**
- ITEM 254 - PAVEMENT PLANING
 - ITEM 253 - FULL DEPTH PAVEMENT REMOVAL AND FLEXIBLE REPLACEMENT
 - ITEM 452 - 6" NON-REINFORCED CONCRETE APRONS & WALK
 - ITEM 609 - CURB REPLACEMENT

- 1 ADJUST TO GRADE
- 2 REBUILD TOP 18" - USE NEW PRE-CAST TOP
- 3 ITEM 608 - NEW CURB RAMP. SINGLE INSERT ONLY - NEW CURB RAMP TYPE TO BE DETERMINED IN THE FIELD BY THE CITY.

- NOTES**
- THE FINAL BASE REPAIR AREAS WILL BE MARKED BY THE CITY WHEN THE PLANING OPERATIONS HAVE BEEN COMPLETED.
 - THE FINAL CURB REPLACEMENT LIMITS AND WORK LIMITS WILL BE MARKED PRIOR TO BEGINNING CONSTRUCTION.
 - THE FINAL LOCATIONS AND LIMITS FOR THE DRIVEWAY APRONS THAT ARE TO BE REMOVED AND REPLACED WILL BE DETERMINED PRIOR TO BEGINNING CONSTRUCTION.
 - PROVIDE BUTT JOINT AT BEGINNING AND END OF PROJECT AS NEEDED.
 - CONTRACTOR TO GIVE CITY OLD STORM CASTINGS. DELIVER TO PUBLIC WORKS FACILITY.
 - SEE DOWNSPOUT DETAIL, TYPICAL. ALL DOWNSPOUT LOCATIONS NOT SHOWN ON DRAWING.

- STRIPING LEGEND**
- CL CENTER LINE, 4" DOUBLE SOLID
 - SL STOP LINE
 - LW LANE WORD
 - LA LANE ARROW
 - CH CHANNELIZING LINE, 8"
 - EL EDGE LINE, 4"
 - CW CROSSWALK, 8"
 - CV CHVERON, 8"

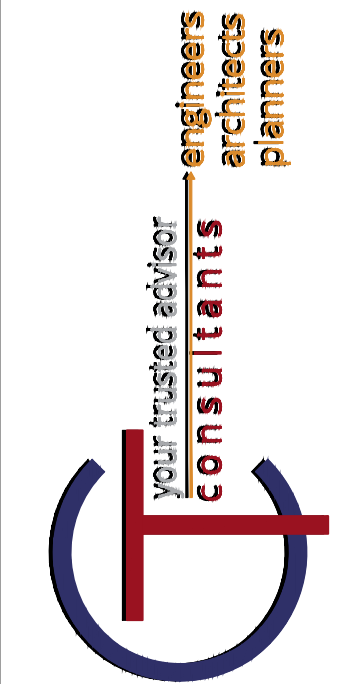


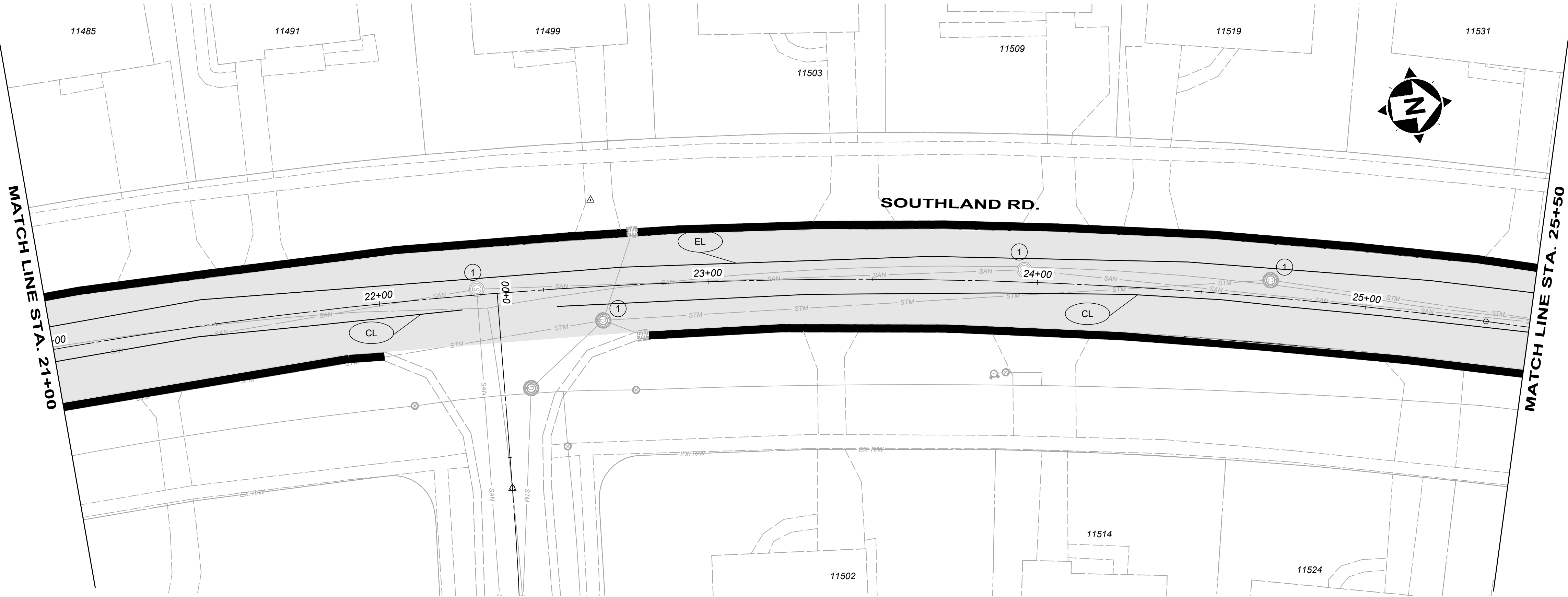
2020 STREET PROGRAM
CITY OF FOREST PARK
HAMILTON COUNTY, OH

SOUTHLAND ROAD
BASE BID

PROJECT NO.	
200070	
DISCIPLINE	
CIVIL	
SHEET NAME	
C4	
SHEET	OF
4	7

ISSUED FOR:	BID	DATE	REVISION	NO
ISSUE DATE:	01/29/20	XXX/18		
SCALE:	AS SHOWN			
DESIGNED BY:	MMYA			
DRAWN BY:	MMYA			
CHECKED BY:	FTWE			

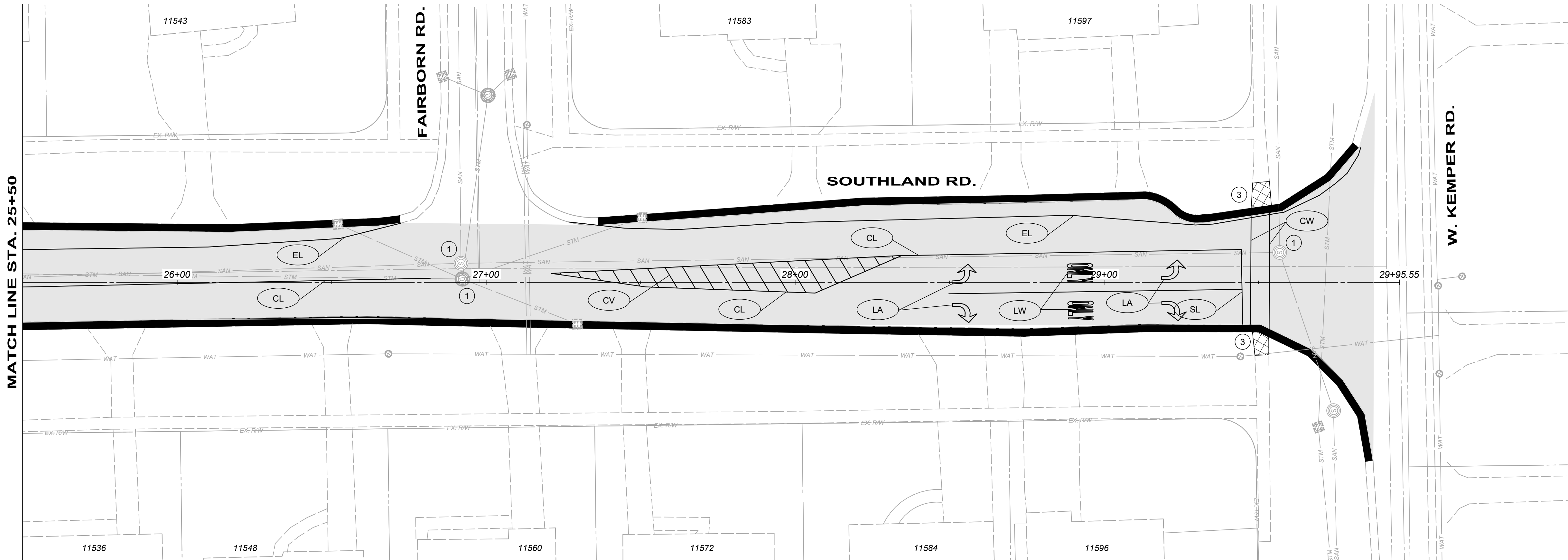




- LEGEND & KEYNOTES**
- ITEM 254 - PAVEMENT PLANING
 - ITEM 253 - FULL DEPTH PAVEMENT REMOVAL AND FLEXIBLE REPLACEMENT
 - ITEM 452 - 6" NON-REINFORCED CONCRETE APRONS & WALK
 - ITEM 609 - CURB REPLACEMENT

- 1 ADJUST TO GRADE
- 2 REBUILD TOP 18" - USE NEW PRE-CAST TOP
- 3 ITEM 608 - NEW CURB RAMP. SINGLE INSERT ONLY - NEW CURB RAMP TYPE TO BE DETERMINED IN THE FIELD BY THE CITY.

- NOTES**
- THE FINAL BASE REPAIR AREAS WILL BE MARKED BY THE CITY WHEN THE PLANING OPERATIONS HAVE BEEN COMPLETED.
 - THE FINAL CURB REPLACEMENT LIMITS AND WORK LIMITS WILL BE MARKED PRIOR TO BEGINNING CONSTRUCTION.
 - THE FINAL LOCATIONS AND LIMITS FOR THE DRIVEWAY APRONS THAT ARE TO BE REMOVED AND REPLACED WILL BE DETERMINED PRIOR TO BEGINNING CONSTRUCTION.
 - PROVIDE BUTT JOINT AT BEGINNING AND END OF PROJECT AS NEEDED.
 - CONTRACTOR TO GIVE CITY OLD STORM CASTINGS. DELIVER TO PUBLIC WORKS FACILITY.
 - SEE DOWNSPOUT DETAIL, TYPICAL. ALL DOWNSPOUT LOCATIONS NOT SHOWN ON DRAWING.



STRIPING LEGEND

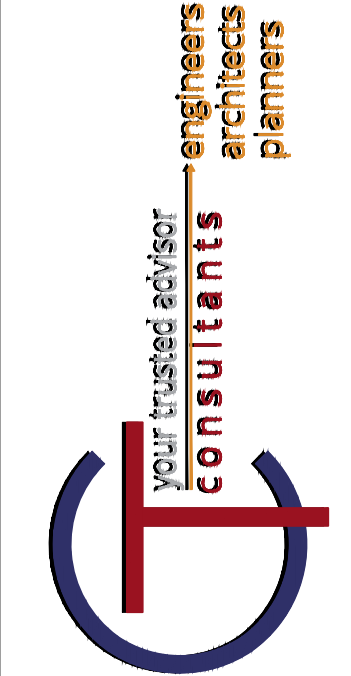
- CL CENTER LINE, 4" DOUBLE SOLID
- SL STOP LINE
- LW LANE WORD
- LA LANE ARROW
- CH CHANNELIZING LINE, 8"
- EL EDGE LINE, 4"
- CW CROSSWALK, 8"
- CV CHVERON, 8"
- LD LOOP DETECTOR

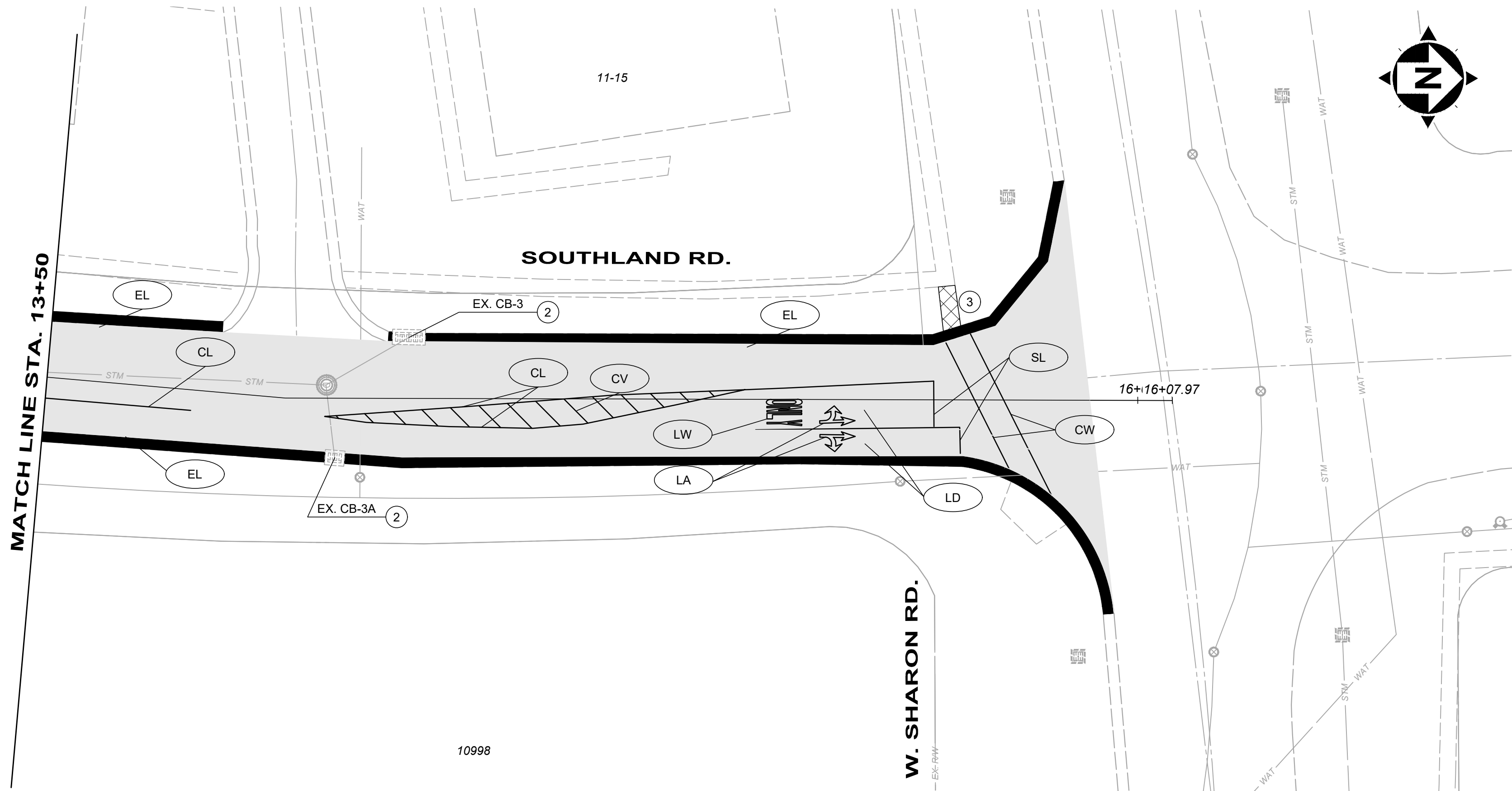
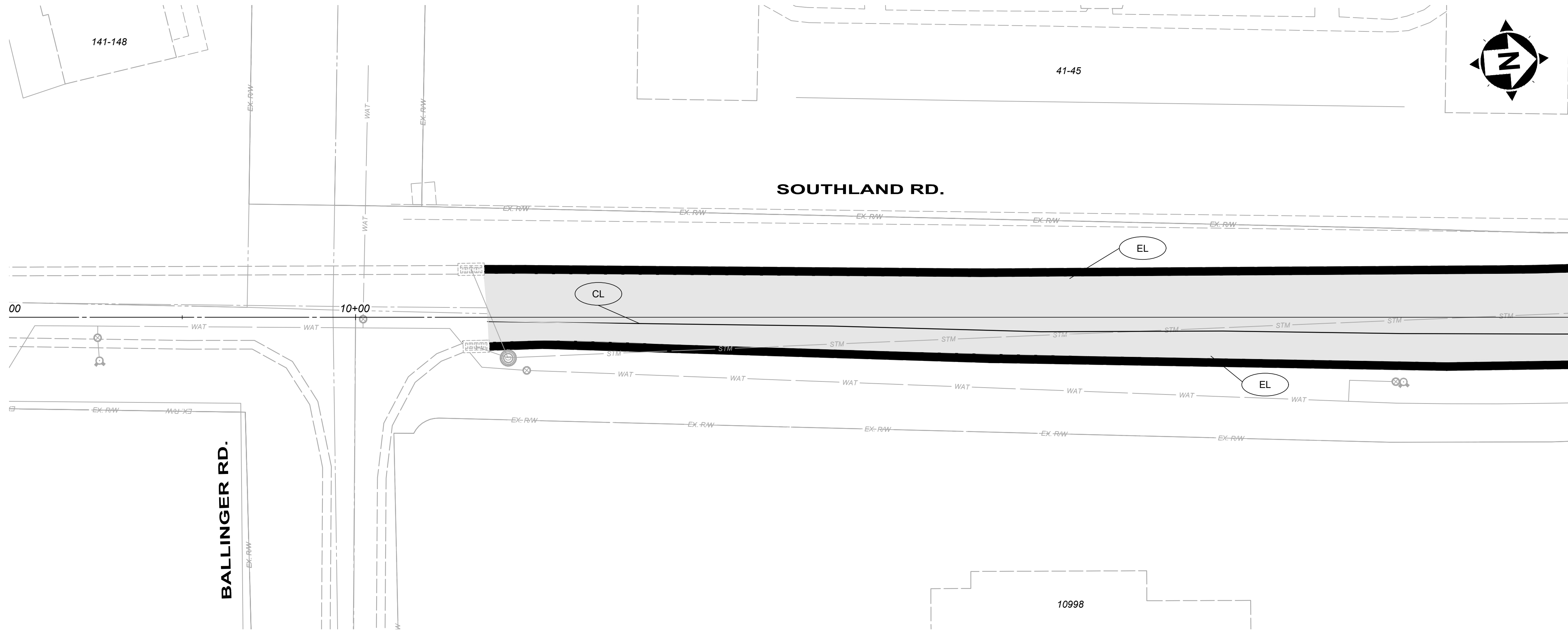
2020 STREET PROGRAM
CITY OF FOREST PARK
HAMILTON COUNTY, OH

SOUTHLAND ROAD
BASE BID

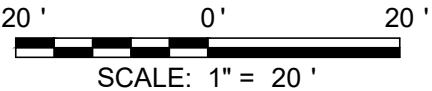
PROJECT NO. 200070	
DISCIPLINE CIVIL	
SHEET NAME C5	
SHEET 5	OF 7

ISSUED FOR:	BID	NO	REVISION	DATE
ISSUE DATE:	01/29/20	Δ		XXX/18
SCALE:	AS SHOWN			
DESIGNED BY:	MMYA			
DRAWN BY:	MMYA			
CHECKED BY:	FTWE			





ADDRESS	NEW CURB PLATE SGI	NEW CURB PLATE DGI	NEW GRATE	DESCRIPTION
10998	1		1	REBUILD TOP 18" - USE NEW PRECAST TOP
11-15		1	2	REBUILD TOP 18" - USE NEW PRECAST TOP



- LEGEND & KEYNOTES**
- ITEM 254 - PAVEMENT PLANING
 - ITEM 253 - FULL DEPTH PAVEMENT REMOVAL AND FLEXIBLE REPLACEMENT
 - ITEM 452 - 6" NON-REINFORCED CONCRETE APRONS & WALK
 - ITEM 609 - CURB REPLACEMENT

- ADJUST TO GRADE
- REBUILD TOP 18" - USE NEW PRE-CAST TOP
- ITEM 608 - NEW CURB RAMP. SINGLE INSERT ONLY - NEW CURB RAMP TYPE TO BE DETERMINED IN THE FIELD BY THE CITY.

- NOTES**
- THE FINAL BASE REPAIR AREAS WILL BE MARKED BY THE CITY WHEN THE PLANING OPERATIONS HAVE BEEN COMPLETED.
 - THE FINAL CURB REPLACEMENT LIMITS AND WORK LIMITS WILL BE MARKED PRIOR TO BEGINNING CONSTRUCTION.
 - THE FINAL LOCATIONS AND LIMITS FOR THE DRIVEWAY APRONS THAT ARE TO BE REMOVED AND REPLACED WILL BE DETERMINED PRIOR TO BEGINNING CONSTRUCTION.
 - PROVIDE BUTT JOINT AT BEGINNING AND END OF PROJECT AS NEEDED.
 - CONTRACTOR TO GIVE CITY OLD STORM CASTINGS. DELIVER TO PUBLIC WORKS FACILITY.
 - SEE DOWNSPOUT DETAIL, TYPICAL. ALL DOWNSPOUT LOCATIONS NOT SHOWN ON DRAWING.

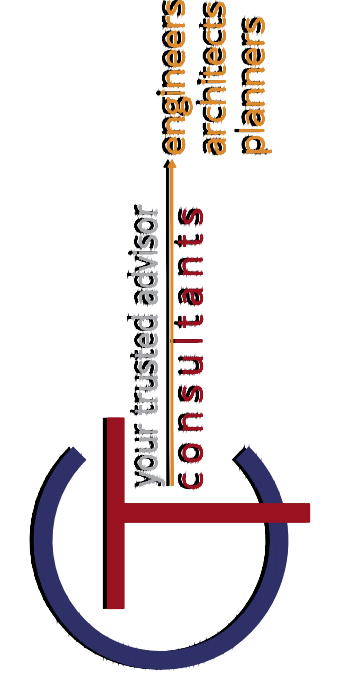
- STRIPING LEGEND**
- CL CENTER LINE, 4" DOUBLE SOLID
 - SL STOP LINE
 - LW LANE WORD
 - LA LANE ARROW
 - CH CHANNELIZING LINE, 8"
 - EL EDGE LINE, 4"
 - CW CROSSWALK, 8"
 - CV CHVERON, 8"
 - LD LOOP DETECTOR

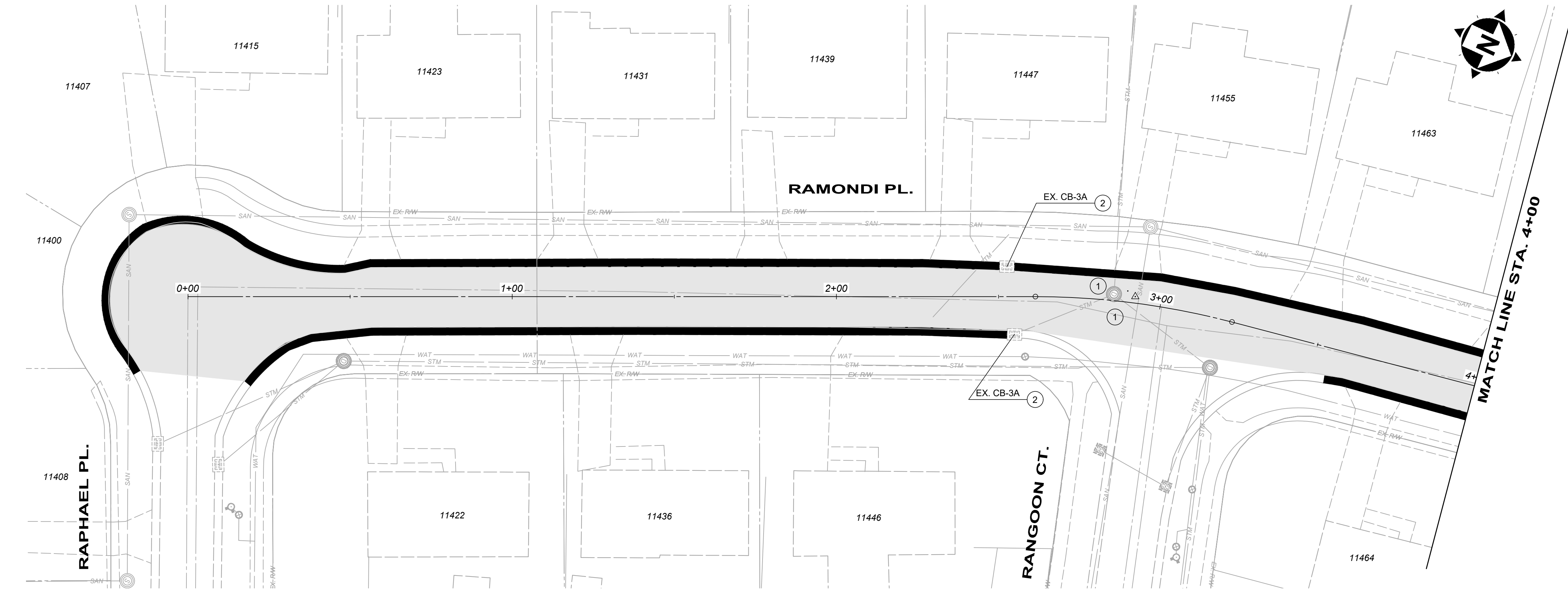
2020 STREET PROGRAM
CITY OF FOREST PARK
HAMILTON COUNTY, OH

SOUTHLAND ROAD
ALTERNATE BID #1

PROJECT NO. 200070	
DISCIPLINE CIVIL	
SHEET NAME C6	
SHEET 6	OF 7

ISSUED FOR:	BID	NO	REVISION	DATE
ISSUE DATE:	01/29/20			XXX/18
SCALE:	AS SHOWN			
DESIGNED BY:	MMYA			
DRAWN BY:	MMYA			
CHECKED BY:	FTWE			



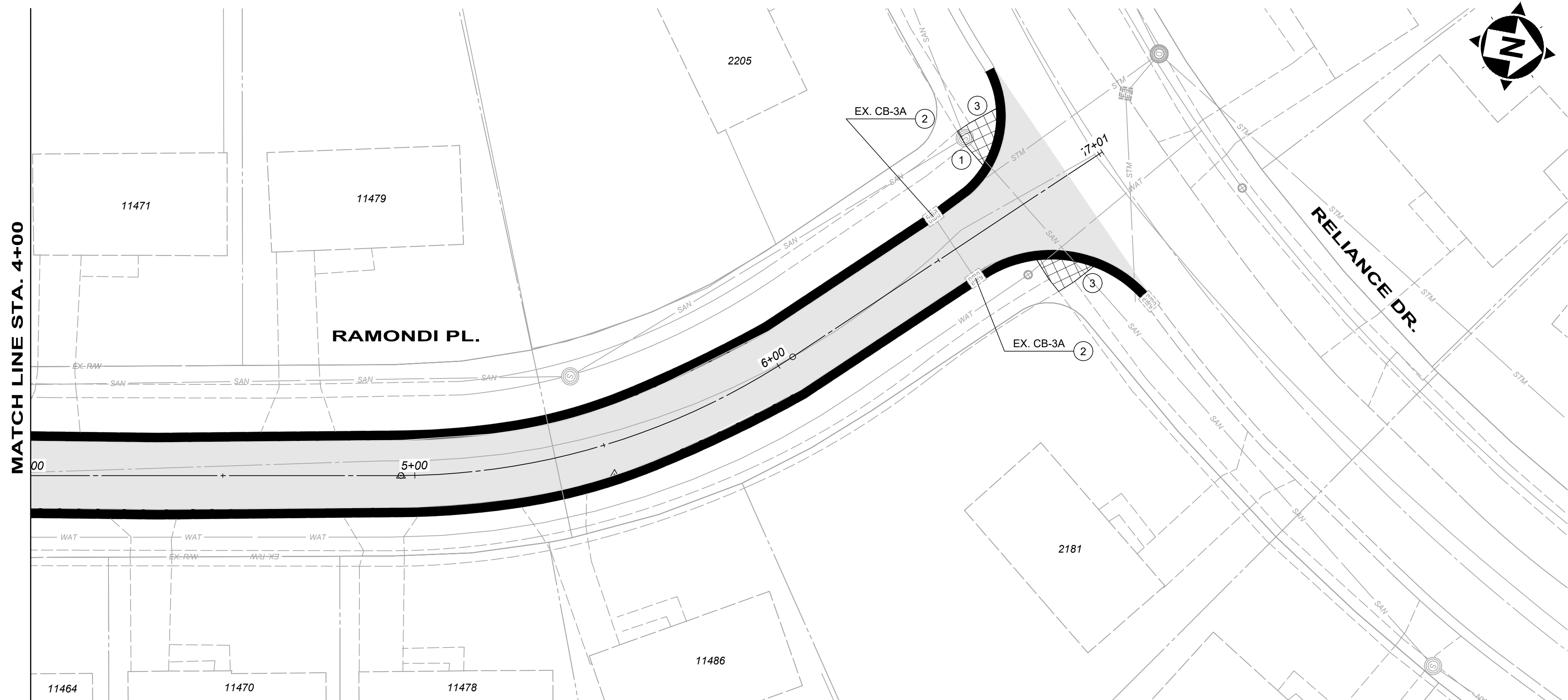


- LEGEND & KEYNOTES**
- ITEM 254 - PAVEMENT PLANING
 - ITEM 253 - FULL DEPTH PAVEMENT REMOVAL AND FLEXIBLE REPLACEMENT
 - ITEM 452 - 6" NON-REINFORCED CONCRETE APRONS & WALK
 - ITEM 609 - CURB REPLACEMENT

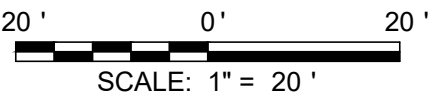
- 1 ADJUST TO GRADE
- 2 REBUILD TOP 18" - USE NEW PRE-CAST TOP
- 3 ITEM 608 - NEW CURB RAMP. SINGLE INSERT ONLY - NEW CURB RAMP TYPE TO BE DETERMINED IN THE FIELD BY THE CITY.

NOTES

- THE FINAL BASE REPAIR AREAS WILL BE MARKED BY THE CITY WHEN THE PLANING OPERATIONS HAVE BEEN COMPLETED.
- THE FINAL CURB REPLACEMENT LIMITS AND WORK LIMITS WILL BE MARKED PRIOR TO BEGINNING CONSTRUCTION.
- THE FINAL LOCATIONS AND LIMITS FOR THE DRIVEWAY APRONS THAT ARE TO BE REMOVED AND REPLACED WILL BE DETERMINED PRIOR TO BEGINNING CONSTRUCTION.
- PROVIDE BUTT JOINT AT BEGINNING AND END OF PROJECT AS NEEDED.
- CONTRACTOR TO GIVE CITY OLD STORM CASTINGS. DELIVER TO PUBLIC WORKS FACILITY.
- SEE DOWNSPOUT DETAIL, TYPICAL. ALL DOWNSPOUT LOCATIONS NOT SHOWN ON DRAWING.



ADDRESS	NEW CURB PLATE SGI	NEW GRATE	DESCRIPTION
2205	1	1	REBUILD TOP 18" - USE NEW PRECAST TOP
2181	1	1	REBUILD TOP 18" - USE NEW PRECAST TOP
11447	1	1	REBUILD TOP 18" - USE NEW PRECAST TOP
11446	1	1	REBUILD TOP 18" - USE NEW PRECAST TOP



2020 STREET PROGRAM
CITY OF FOREST PARK
HAMILTON COUNTY, OH

RAMONDI PLACE
ALTERNATE BID #2

PROJECT NO. 200070	
DISCIPLINE CIVIL	
SHEET NAME C7	
SHEET 7	OF 7

ISSUED FOR:	BID	DATE	REVISION	NO
ISSUE DATE:	01/29/20	XXX/18		
SCALE:	AS SHOWN			
DESIGNED BY:	MMYA			
DRAWN BY:	MMYA			
CHECKED BY:	FTWE			

