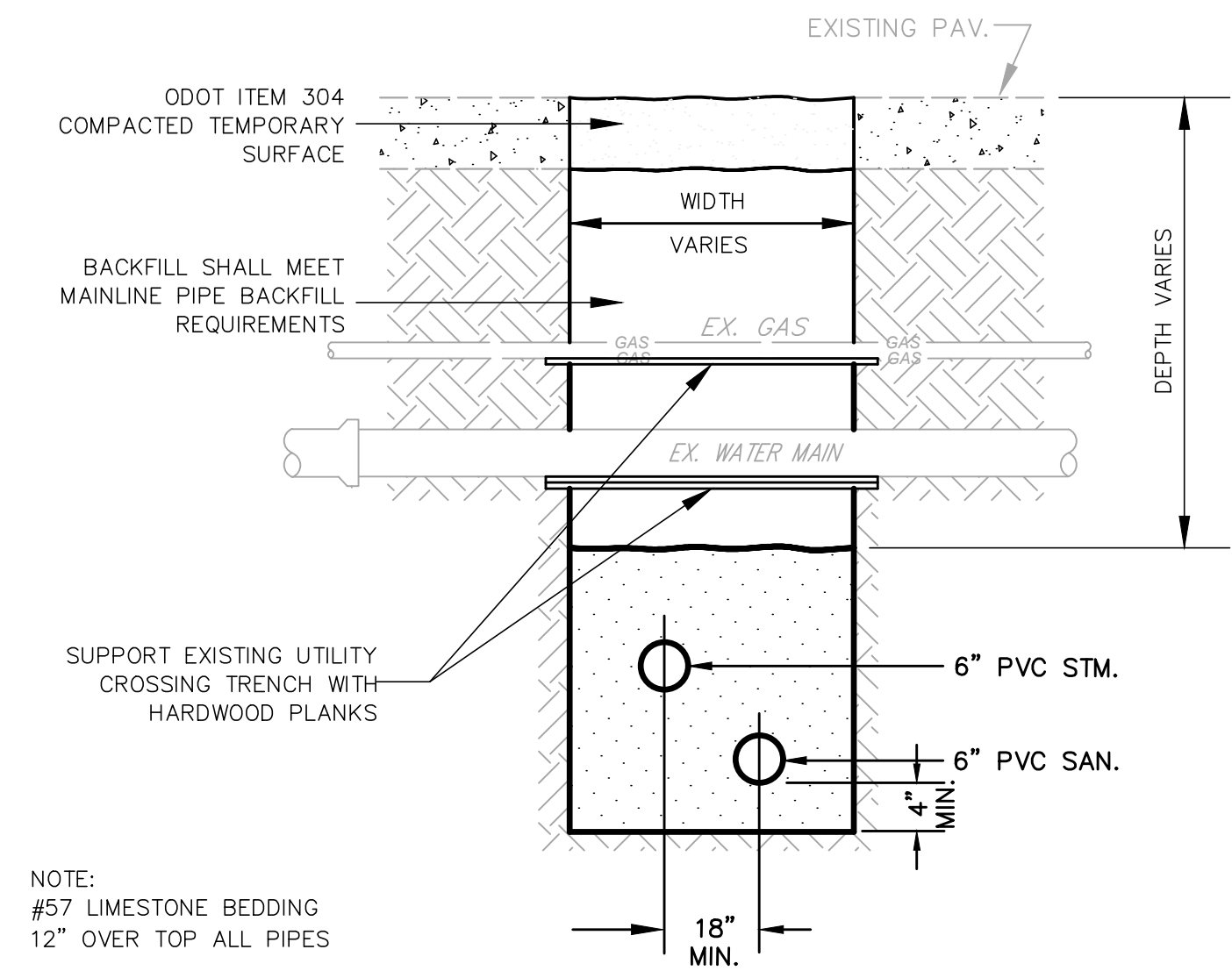


- NOTES:**
- MAXIMUM EXCAVATED TRENCH WIDTH: THE MAXIMUM EXCAVATED TRENCH WIDTH FROM THE BOTTOM OF THE TRENCH TO 12" OVER THE TOP OF THE PIPE (WITHIN PIPE EMBEDMENT) SHALL BE O.D. + 24" FOR ALL PIPES UP TO AND INCLUDING 24" I.D. + 30" FOR PIPE FROM 24" I.D. TO 54" I.D. AND O.D. + 48" FOR PIPES SIZES 60" I.D. AND OVER.
  - FOUNDATION: WHERE AN UNSTABLE TRENCH BOTTOM CONDITION IS ENCOUNTERED, THE CONTRACTOR SHALL EXCAVATE TO A DEPTH REQUIRED BY THE ENGINEER AND REPLACE WITH MATERIAL AS DIRECTED BY THE ENGINEER.
  - PIPE EMBEDMENT:
    - CLASS A:** CLASS A PIPE EMBEDMENT SHALL BE USED FOR ALL PIPING UNDER PAVEMENT OR STRUCTURES WITH LESS THAN 12 INCHES OF PIPE COVER TO THE SUBGRADE. THE CONCRETE CRADLE SHALL BE IN ACCORDANCE WITH ODOT ITEM 499, CLASS "C". THE INITIAL BACKFILL SHALL BE AASHTO NO. 57 OR NO. 67 CRUSHED GRANULAR PIPE EMBEDMENT.
    - CLASS B:** CLASS B PIPE EMBEDMENT SHALL BE USED FOR ALL PIPING UNLESS OTHERWISE NOTED ON THE PLANS OR AUTHORIZED BY THE ENGINEER. THE BEDDING AND HAUNCHING SHALL BE AASHTO NO. 57 OR NO. 67 GRANULAR PIPE EMBEDMENT. IN ALL AREAS UNDER PAVEMENT, STRUCTURES OR WITHIN THE ZONE OF INFLUENCE, THE INITIAL BACKFILL SHALL BE AASHTO NO. 57 OR NO. 67 CRUSHED GRANULAR PIPE EMBEDMENT. IN ALL AREAS OUTSIDE OF PAVEMENT, STRUCTURES OR THE ZONE OF INFLUENCE, THE INITIAL BACKFILL SHALL BE SUITABLE ON-SITE MATERIAL APPROVED BY THE ENGINEER FOR ONLY REINFORCED CONCRETE PIPE AND DUCTILE IRON PIPE. THE INITIAL BACKFILL FOR ALL OTHER PIPES SHALL BE AASHTO NO. 57 OR NO. 67 CRUSHED GRANULAR PIPE EMBEDMENT.
    - CLASS C:** CLASS C PIPE EMBEDMENT SHALL ONLY BE USED FOR DUCTILE IRON WATER MAIN, DUCTILE IRON FORCE MAINS OR AS AUTHORIZED BY THE ENGINEER. THE PIPE EMBEDMENT SHALL BE AASHTO NO. 57 OR NO. 67 CRUSHED GRANULAR PIPE EMBEDMENT IN ALL AREAS UNDER PAVEMENT, STRUCTURES OR WITHIN THE ZONE OF INFLUENCE. THE PIPE EMBEDMENT SHALL BE SUITABLE ON-SITE MATERIAL APPROVED BY THE ENGINEER IN ALL AREAS OUTSIDE OF PAVEMENT, STRUCTURES OR THE ZONE OF INFLUENCE. WHERE ROCK OR SHALE IS ENCOUNTERED, A MINIMUM 6-INCHES OF AASHTO NO. 57 OR NO. 67 CRUSHED GRANULAR PIPE BEDDING OR SAND BEDDING SHALL BE PLACED AS DIRECTED BY THE ENGINEER.
  - FINAL BACKFILL: IN ALL AREAS UNDER PAVEMENT, STRUCTURES OR WITHIN THE ZONE OF INFLUENCE THE FINAL BACKFILL SHALL BE SUITABLE ON-SITE MATERIAL APPROVED BY THE ENGINEER OR IMPORTED PREMIUM FILL.
  - SPECIFICATIONS: ALL TRENCHING, PIPE EMBEDMENT AND BACKFILL MATERIALS SHALL BE IN ACCORDANCE WITH SPECIFICATIONS.
  - CLAY TRENCH DAMS: CLAY TRENCH DAMS SHALL BE REQUIRED FOR EACH LATERAL, UPSTREAM OF EVERY MANHOLE, AS SHOWN ON THE DRAWINGS, AND AS DIRECTED BY THE ENGINEER.
  - GEOTEXTILE FABRIC: INSTALL A GEOTEXTILE FABRIC IN ACCORDANCE WITH ODOT 712.09, TYPE A, AFTER ALL INITIAL BACKFILL CONSISTING OF AASHTO NO. 57 OR NO. 67 CRUSHED GRANULAR PIPE EMBEDMENT.
  - DETECTOR TAPE: IF REQUIRED IN THE SPECIFICATIONS, INSTALL DETECTABLE WARNING TAPE ABOVE UTILITIES, 12" BELOW FINISHED GRADE, EXCEPT 6 INCHES BELOW SUBGRADE UNDER PAVEMENT AND SLABS.

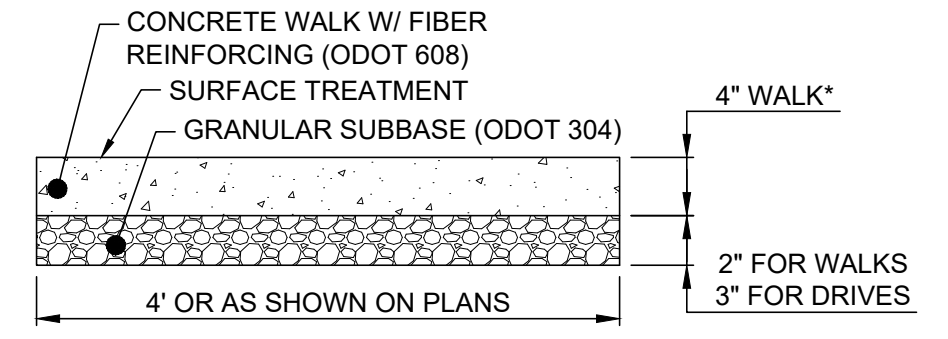
**TRENCHING, EMBEDMENT AND BACKFILL DETAIL**

NOT TO SCALE

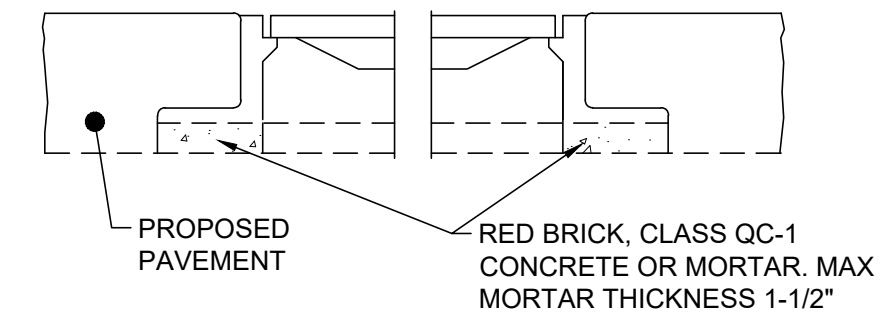


**LATERAL TRENCH DETAIL**  
N.T.S

NOTE:  
#57 LIMESTONE BEDDING  
12" OVER TOP ALL PIPES

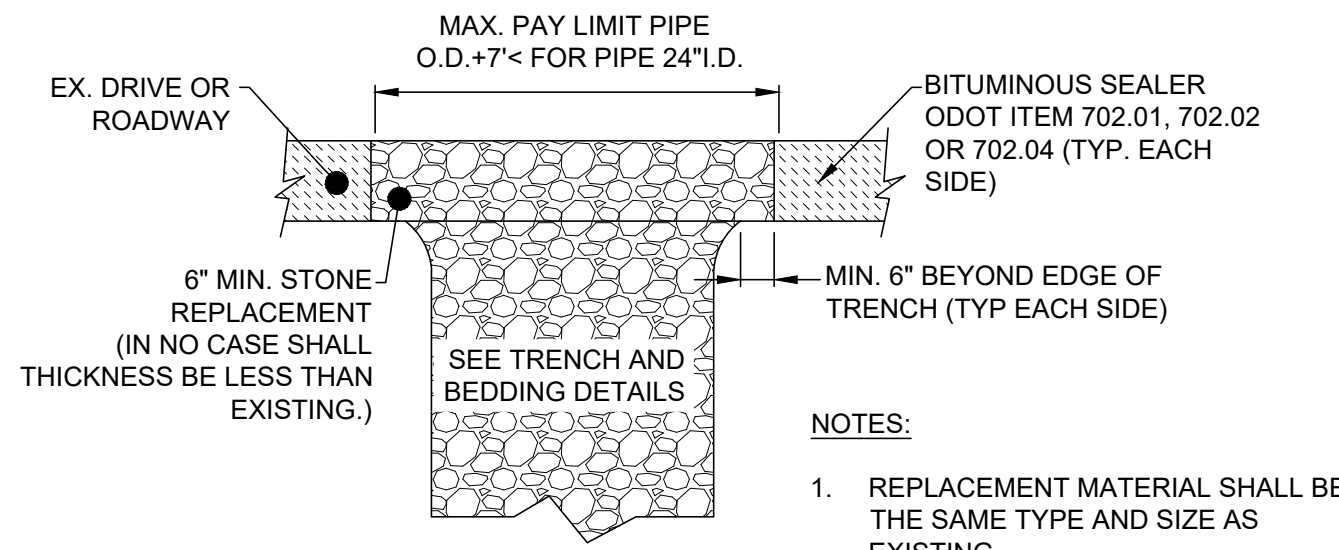


**CONCRETE WALK DETAIL**  
NOT TO SCALE



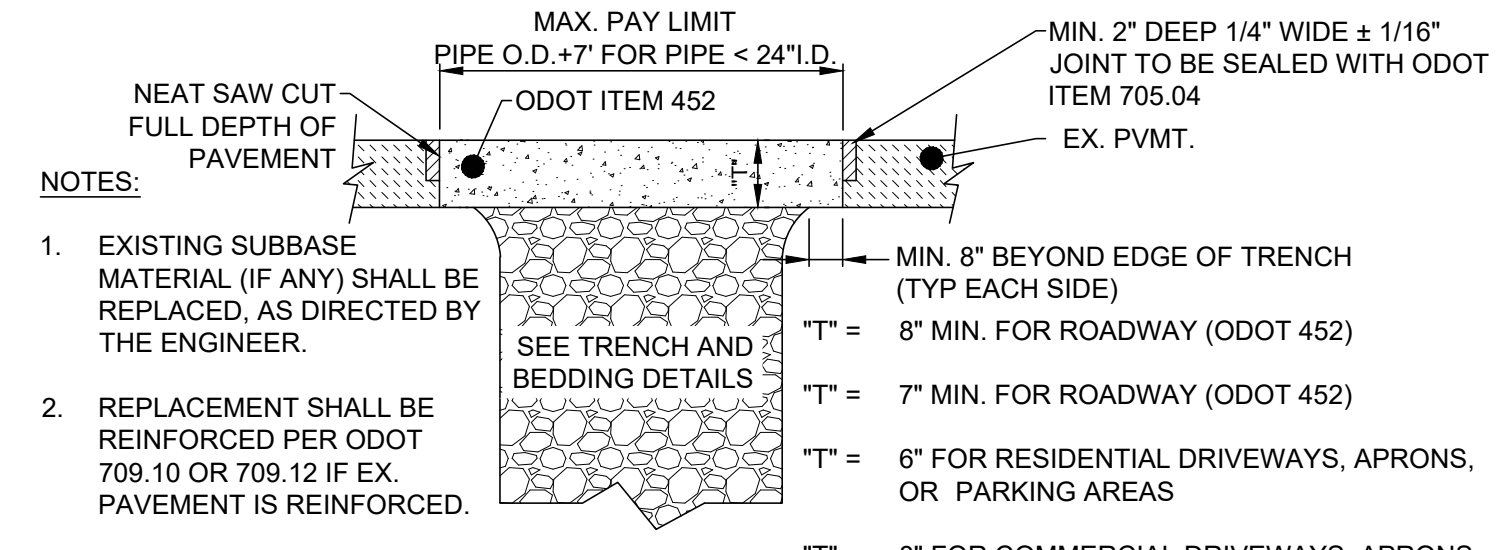
**MH/I.B. ADJUSTED TO GRADE**  
NOT TO SCALE

- \* WALK WITHIN DRIVE APRON LIMITS SHALL BE THE SAME THICKNESS AS THE DRIVE APRON (6" MIN.) AND PAID FOR SEPARATELY.
- 8" FOR COMMERCIAL DRIVES
  - 6" FOR RESIDENTIAL DRIVES



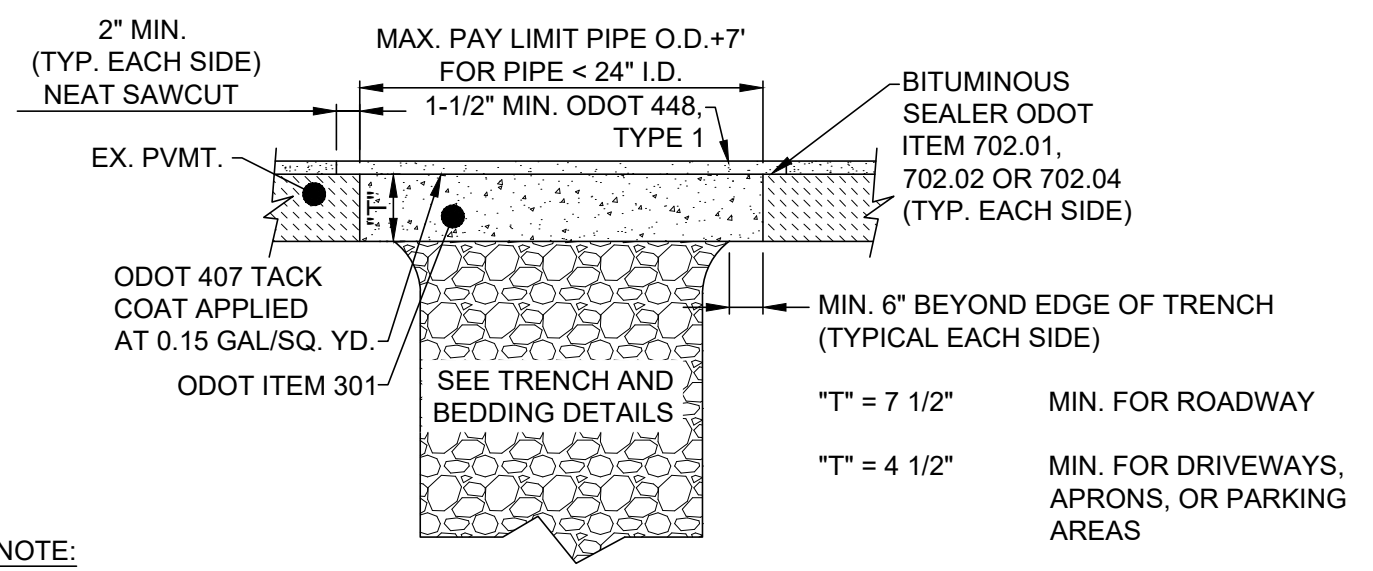
**TYPE 'F' PAVEMENT (GRAVEL) REPLACEMENT**  
NOT TO SCALE

- NOTES:**
- REPLACEMENT MATERIAL SHALL BE THE SAME TYPE AND SIZE AS EXISTING.
  - THIS DETAIL SHALL BE UTILIZED FOR DRIVEWAYS, APRONS, OR PARKING LOTS.



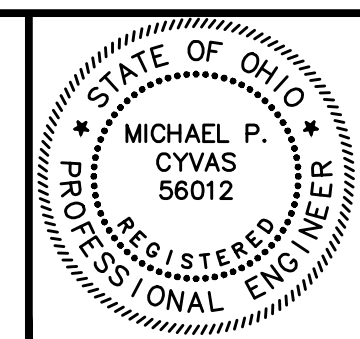
**TYPE 'A' PAVEMENT (CONCRETE) REPLACEMENT**  
NOT TO SCALE

- NOTES:**
- EXISTING SUBBASE MATERIAL (IF ANY) SHALL BE REPLACED, AS DIRECTED BY THE ENGINEER.
  - REPLACEMENT SHALL BE REINFORCED PER ODOT 709.10 OR 709.12 IF EX. PAVEMENT IS REINFORCED.
  - 5/8" Ø HOOKBOLT @ 24" O.C. ARE REQUIRED.
  - CONCRETE SHALL BE OF TYPE QCMS FOR ALL APPLICATIONS.
- MIN. 2" DEEP 1/4" WIDE ± 1/16" JOINT TO BE SEALED WITH ODOT ITEM 705.04 EX. PVMT.
- MIN. 8" BEYOND EDGE OF TRENCH (TYP EACH SIDE)
- "T" = 8" MIN. FOR ROADWAY (ODOT 452)
- "T" = 7" MIN. FOR ROADWAY (ODOT 452)
- "T" = 6" FOR RESIDENTIAL DRIVEWAYS, APRONS, OR PARKING AREAS
- "T" = 8" FOR COMMERCIAL DRIVEWAYS, APRONS, OR PARKING AREAS
- IN NO CASE SHALL "T" BE LESS THAN THE EXISTING PAVEMENT THICKNESS.



**TYPE 'C' PAVEMENT (ASPHALT) REPLACEMENT**  
NOT TO SCALE

- NOTE:**
- EXISTING UNSUITABLE SUBBASE MATERIAL (IF ANY) SHALL BE REPLACED, AS DIRECTED BY THE ENGINEER.
- IN NO CASE SHALL THE THICKNESS OF THE OVERLAY AND/OR "T" BE LESS THAN EXISTING.



NO	REVISION	DATE

**W. JEFFERSON STREET & SUNDRY STREETS SANITARY SEWER IMPROVEMENTS**  
VILLAGE OF JEFFERSON, OHIO

**SCALE:** AS SHOWN

**DATE:** 6/1/20

**DESIGNED BY:** DPK

**DRAWN BY:** DPK

**CHECKED BY:** MPC

**STANDARD DETAILS**

**PROJECT NO:** 190748

**DRAWING NAME:**

<b>SHEET</b>	<b>OF</b>
7	9