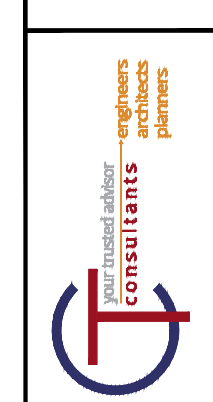


- LEGEND**
- 251 - PARTIAL DEPTH PAVEMENT REPAIR
  - 253 - PAVEMENT REPAIR
  - 254 - PAVEMENT PLANING, 2-1/2" 441 - INTERMEDIATE COURSE, 1" 441 - SURFACE COURSE, 1-1/2"
  - ITEM 609 - COMBINATION CURB AND GUTTER, TYPE 2
  - EXISTING CONCRETE SIDEWALK
  - EXISTING GRASS AREA

- KEYNOTES**
- 1 ITEM 611 - CATCH BASIN NO. 2-2B, REMOVE EXISTING CATCH BASIN AND INSTALL A NEW CB-2-2B
  - 2 ITEM 611 - STORM MANHOLE ADJUSTED TO GRADE
  - 3 ITEM 611 - SANITARY MANHOLE ADJUSTED TO GRADE
  - 4 ITEM 644 - EDGE LINE, 4"
  - 5 ITEM 644 - CENTERLINE, 4" SOLID DOUBLE YELLOW
  - 6 ITEM 644 - STOP LINE, 24"
  - 7 ITEM 644 - CROSSWALK LINE, 12"
  - 8 ITEM 644 - TRANSVERSE/DIAGONAL LINE (SIZE NOTED)
  - 9 ITEM 644 - SCHOOL SYMBOL MARKING, 96"
  - 10 ITEM 644 - PARKING LOT STALL MARKING, 4"

- NOTES**
- 1) THE FINAL PAVEMENT REPAIR AREAS WILL BE MARKED PRIOR TO BEGINNING CONSTRUCTION.
  - 2) THE FINAL CURB REPAIR AREAS WILL BE MARKED PRIOR TO BEGINNING CONSTRUCTION.



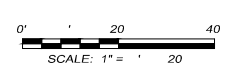
NO	REVISION	DATE

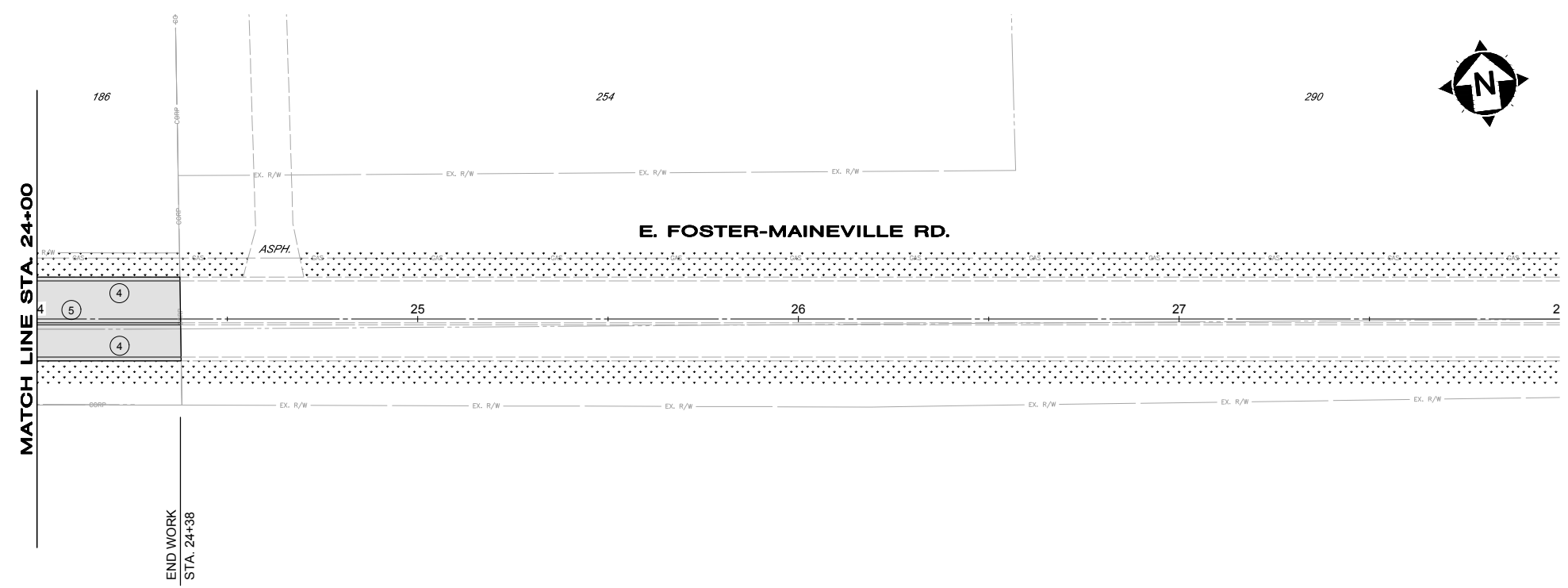
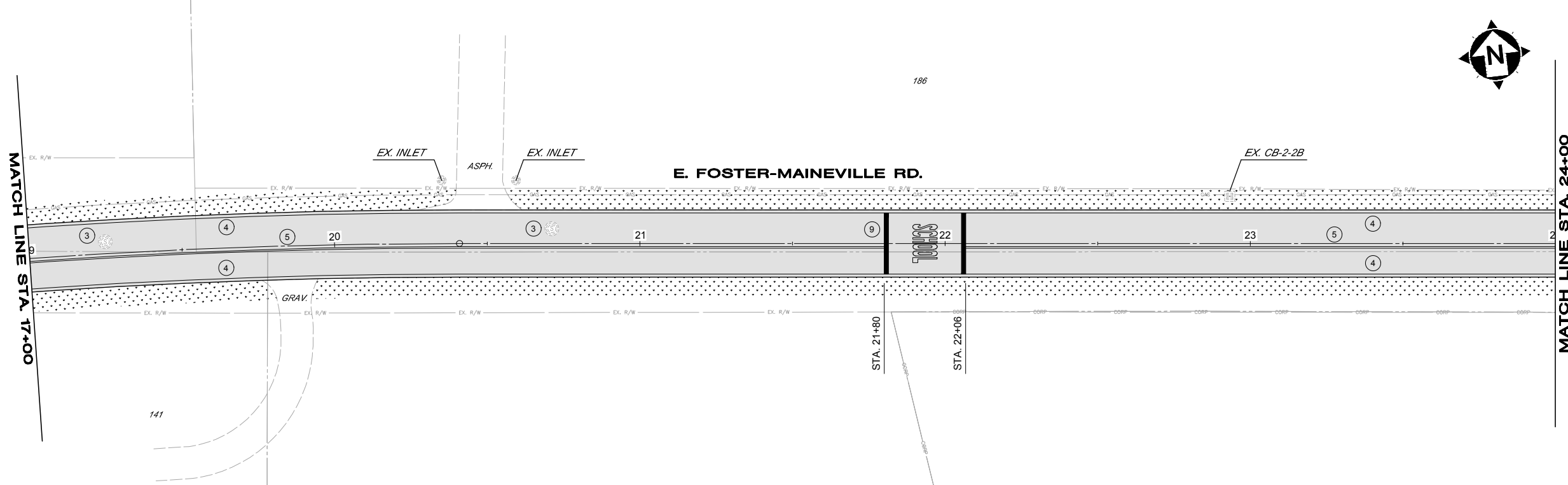
SCALE: AS SHOWN	DATE: AUG. 2019	DESIGNED BY: DSHV	DRAWN BY: SIFRA	CHECKED BY: DSHV
-----------------	-----------------	-------------------	-----------------	------------------

**EAST FOSTER MAINEVILLE ROAD AND MULBERRY STREET REHABILITATION VILLAGE OF MAINEVILLE, WARREN COUNTY, OHIO**

**E. FOSTER-MAINEVILLE ROAD**

PROJECT NO:	
190595	
DRAWING NAME	
PLN 1	
SHEET	OF
1	4

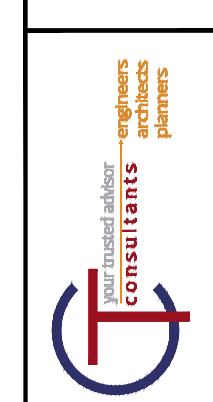




- LEGEND**
- 251 - PARTIAL DEPTH PAVEMENT REPAIR
  - 253 - PAVEMENT REPAIR
  - 254 - PAVEMENT PLANING, 2-1/2" 441 - INTERMEDIATE COURSE, 1" 441 - SURFACE COURSE, 1-1/2"
  - ITEM 609 - COMBINATION CURB AND GUTTER, TYPE 2
  - EXISTING CONCRETE SIDEWALK
  - EXISTING GRASS AREA

- KEYNOTES**
- 1) ITEM 611 - CATCH BASIN NO. 2-2B, REMOVE EXISTING CATCH BASIN AND INSTALL A NEW CB-2-2B
  - 2) ITEM 611 - STORM MANHOLE ADJUSTED TO GRADE
  - 3) ITEM 611 - SANITARY MANHOLE ADJUSTED TO GRADE
  - 4) ITEM 644 - EDGE LINE, 4"
  - 5) ITEM 644 - CENTERLINE, 4" SOLID DOUBLE YELLOW
  - 6) ITEM 644 - STOP LINE, 24"
  - 7) ITEM 644 - CROSSWALK LINE, 12"
  - 8) ITEM 644 - TRANSVERSE/DIAGONAL LINE (SIZE NOTED)
  - 9) ITEM 644 - SCHOOL SYMBOL MARKING, 96"
  - 10) ITEM 644 - PARKING LOT STALL MARKING, 4"

- NOTES**
- 1.) THE FINAL PAVEMENT REPAIR AREAS WILL BE MARKED PRIOR TO BEGINNING CONSTRUCTION.
  - 2.) THE FINAL CURB REPAIR AREAS WILL BE MARKED PRIOR TO BEGINNING CONSTRUCTION.



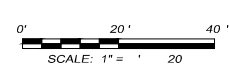
NO	REVISION	DATE

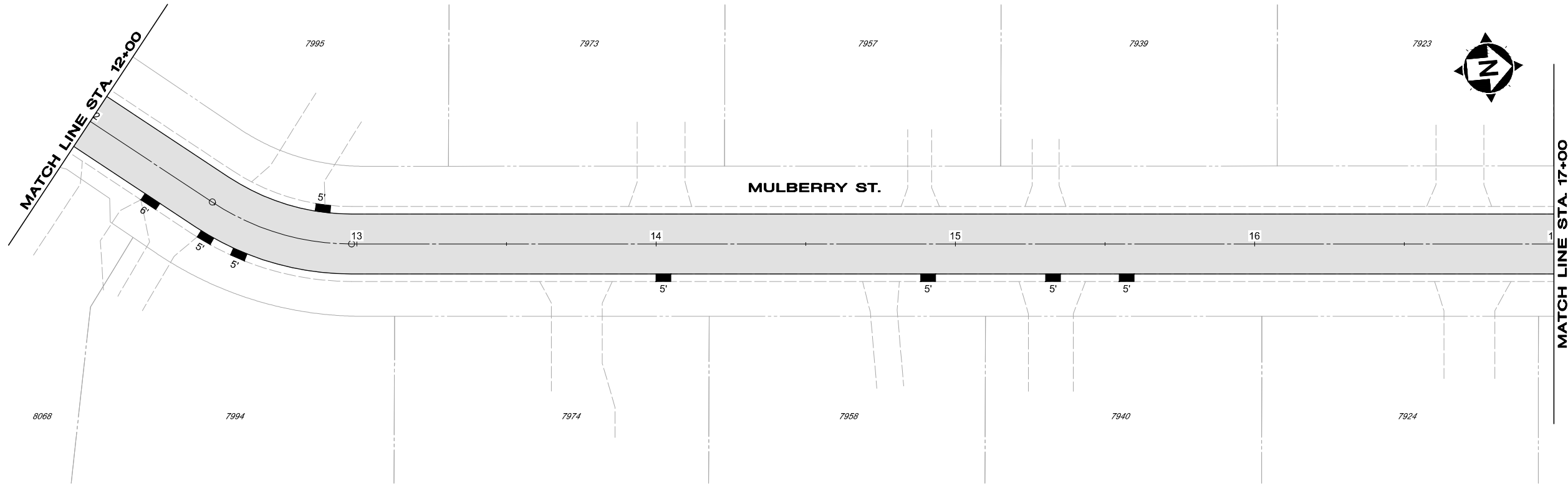
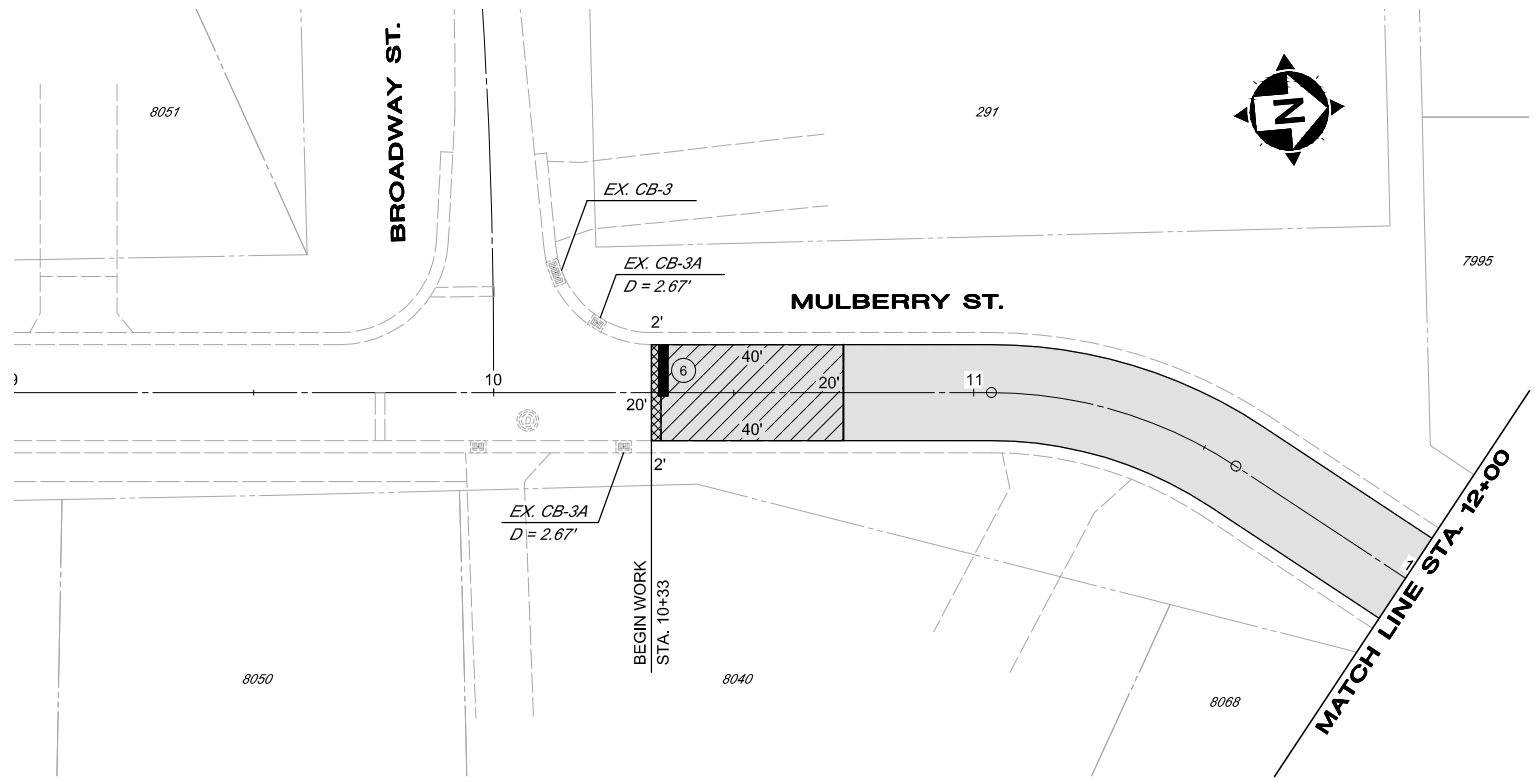
SCALE: AS SHOWN	DATE: AUG. 2019	DESIGNED BY: DSHV	DRAWN BY: SIFRA	CHECKED BY: DSHV
-----------------	-----------------	-------------------	-----------------	------------------

**EAST FOSTER MAINEVILLE ROAD AND MULBERRY STREET REHABILITATION VILLAGE OF MAINEVILLE, WARREN COUNTY, OHIO**

**E. FOSTER-MAINEVILLE ROAD**

PROJECT NO:	
190595	
DRAWING NAME	
PLN 2	
SHEET	OF
2	4





- LEGEND**
- 251 - PARTIAL DEPTH PAVEMENT REPAIR
  - 253 - PAVEMENT REPAIR
  - 254 - PAVEMENT PLANING, 2-1/2"
    - 441 - INTERMEDIATE COURSE, 1"
    - 441 - SURFACE COURSE, 1-1/2"
  - ITEM 609 - COMBINATION CURB AND GUTTER, TYPE 2

- KEYNOTES**
- ① ITEM 644 - STOP LINE

- NOTES**
- 1.) THE FINAL PAVEMENT REPAIR AREAS WILL BE MARKED PRIOR TO BEGINNING CONSTRUCTION.
  - 2.) THE FINAL CURB REPAIR AREAS WILL BE MARKED PRIOR TO BEGINNING CONSTRUCTION.



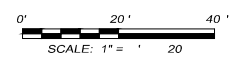
NO	REVISION	DATE

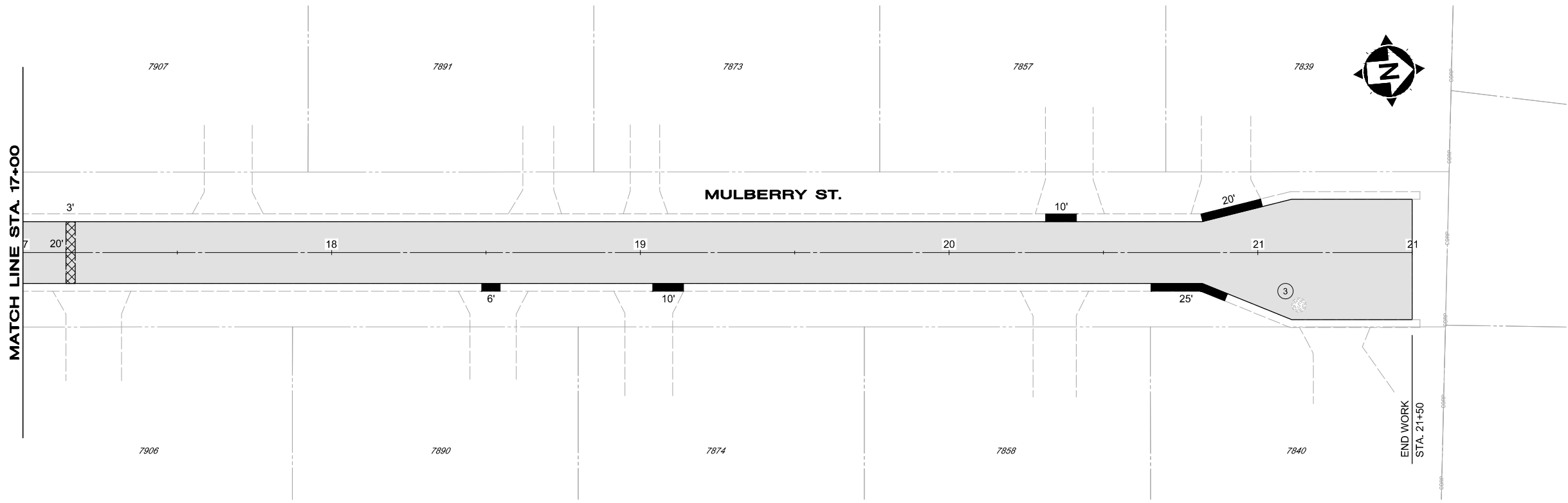
SCALE: AS SHOWN	DATE: AUG. 2019	DESIGNED BY: DSHV	DRAWN BY: SIFRA	CHECKED BY: DSHV
-----------------	-----------------	-------------------	-----------------	------------------

**EAST FOSTER MAINEVILLE ROAD AND MULBERRY STREET REHABILITATION**  
 VILLAGE OF MAINEVILLE, WARREN COUNTY, OHIO

**MULBERRY STREET**

PROJECT NO: <b>190595</b>	
DRAWING NAME: <b>PLN 3</b>	
SHEET <b>3</b>	OF <b>4</b>

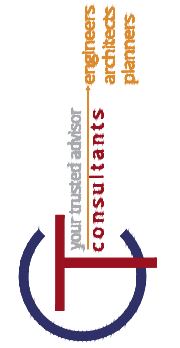




- LEGEND**
- 251 - PARTIAL DEPTH PAVEMENT REPAIR
  - 253 - PAVEMENT REPAIR
  - 254 - PAVEMENT PLANING, 2-1/2" 441 - INTERMEDIATE COURSE, 1" 441 - SURFACE COURSE, 1-1/2"
  - ITEM 609 - COMBINATION CURB AND GUTTER, TYPE 2

- KEYNOTES**
- ① ITEM 644 - STOP LINE

- NOTES**
- 1.) THE FINAL PAVEMENT REPAIR AREAS WILL BE MARKED PRIOR TO BEGINNING CONSTRUCTION.
  - 2.) THE FINAL CURB REPAIR AREAS WILL BE MARKED PRIOR TO BEGINNING CONSTRUCTION.



NO	REVISION	DATE

SCALE: AS SHOWN	DATE: AUG. 2019	DESIGNED BY: DSHV	DRAWN BY: SFFRA	CHECKED BY: DSHV
-----------------	-----------------	-------------------	-----------------	------------------

**EAST FOSTER MAINEVILLE ROAD AND  
MULBERRY STREET REHABILITATION  
VILLAGE OF MAINEVILLE, WARREN COUNTY, OHIO**

**MULBERRY STREET**

PROJECT NO: <b>190595</b>	
DRAWING NAME <b>PLN 4</b>	
SHEET <b>4</b>	OF <b>4</b>

