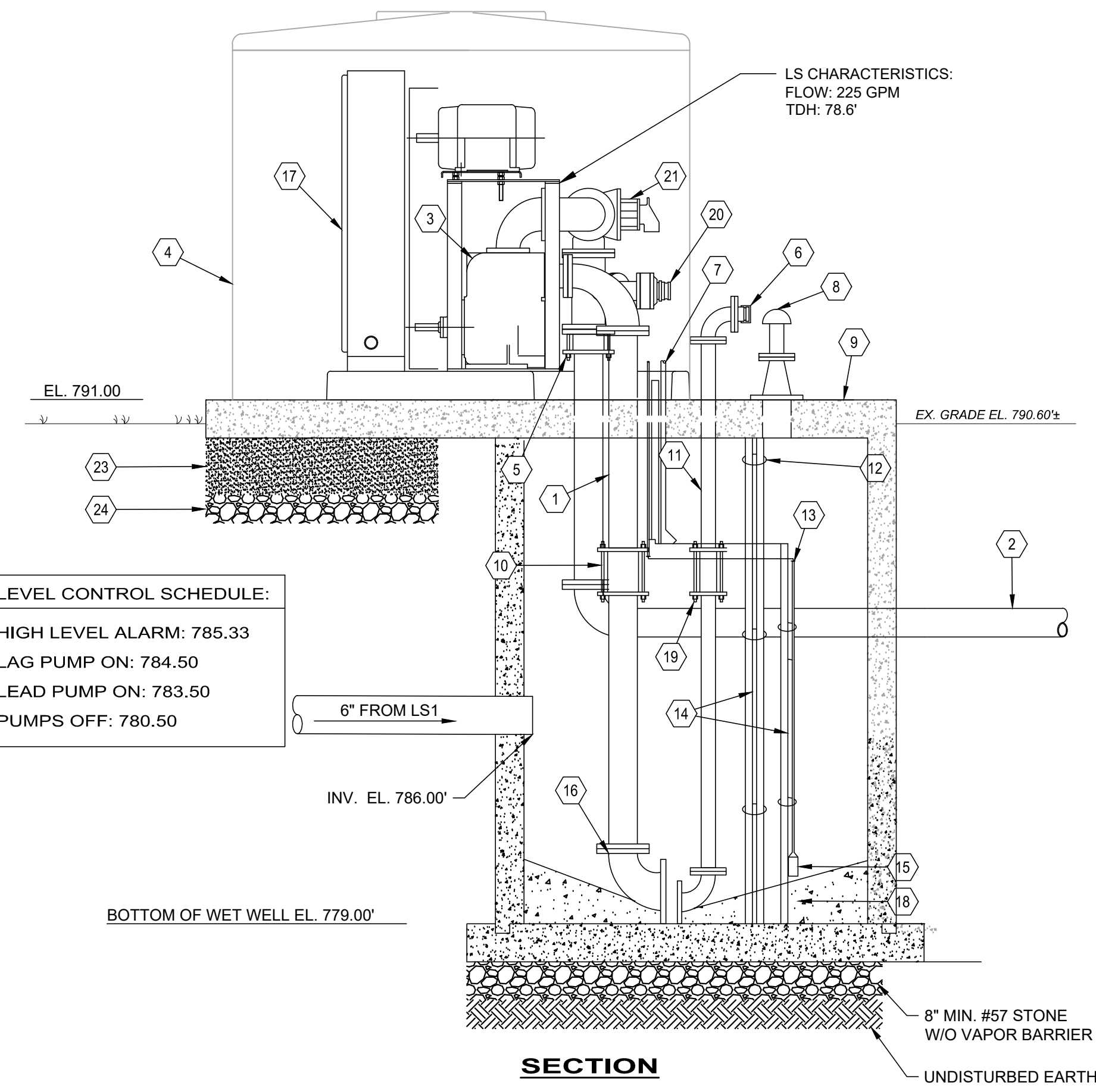


PLAN



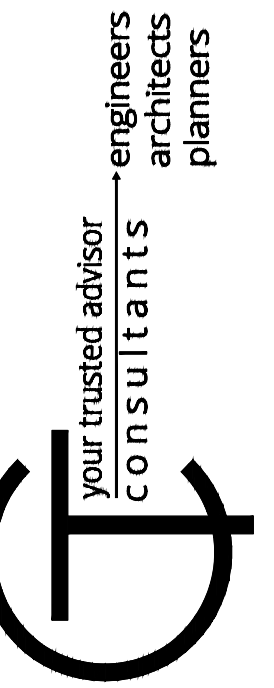
SECTION
ESSMAN LIFT STATION
SCALE: 1/2" = 1'-0"

CODED NOTES

1. 6" DIP PUMP SUCTION (TYP. OF 2).
2. 6" DIP PUMP DISCHARGE.
3. PUMP (TYP. OF 2).
4. 8'x16' FIBERGLASS ENCLOSURE.
5. 6" COUPLING ADAPTER.
6. 3" DIP 90° ELBOW W/QUICK COUPLER & LOCKING DUST CAP.
7. 1 1/4" SCH. 80 PVC AIR RELEASE (TYP. OF 2).
8. 3" SS VENT.
9. 30"x36" ALUMINUM ACCESS HATCH W/SAFETY GRATE.
10. 6" COUPLING (TYP. OF 2).
11. 3" DIP SUCTION.
12. NYLON TIES.
13. 3/8" SCH 80 PVC BUBBLER W/CLEANOUT.
14. 1 1/2" SS SUPPORT POLE (TYP. OF 2).
15. LEVEL TRANSDUCER
16. 8"x6" DIP REDUCING ELBOW.
17. PUMP CONTROL PANEL.
18. CONCRETE FILLET (TYP.)
19. 3" COUPLING.
20. 3" QUICK COUPLER AND 4" PLUG VALVE ON FORCE MAIN.
21. 4" DISCHARGE CHECK VALVE.
22. 4" DISCHARGE PLUG VALVE.
23. 8" MIN. CONTROLLED DENSITY FILL, UNDERNEATH ENTIRE SLAB
24. 4" MIN. #57 STONE, UNDERNEATH ENTIRE SLAB.

LEVEL CONTROL SCHEDULE:

HIGH LEVEL ALARM: 785.33
LAG PUMP ON: 784.50
LEAD PUMP ON: 783.50
PUMPS OFF: 780.50



NO	REVISION	DATE

ISSUED FOR: EPA REVIEW
ISSUE DATE: 1/17/20
SCALE: AS SHOWN
DESIGNED BY: ISC
DRAWN BY: ISC
CHECKED BY: KB

**CRACKEL SUBDIVISION
SANITARY SEWER - PHASE 3
- WEST UNION, OHIO -**

ESSMAN LIFT STATION

PROJECT NO.	
190123	
DISCIPLINE	
GENERAL	
SHEET NAME	
LS-PLAN	
SHEET	OF
19B	25