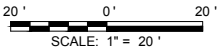


- LEGEND**
- ITEM 254 - PAVEMENT PLANING
  - ITEM 253 - FULL DEPTH PAVEMENT REPAIR (SEE NOTE 1)
  - ITEM 609 - ROLLED COMBINATION CURB AND GUTTER, REMOVAL AND REPLACEMENT (SEE NOTE 2)

- KEYNOTES**
- ITEM SPL - CONCRETE MASONRY, LOW PROFILE HEADWALL (SEE DETAIL)
  - ITEM 605 - 6" SCHEDULE 40 PVC, COLLECTOR LINE AND DOWNSPOUT CONNECTION, UNDER CURB
  - ITEM 605 - 6" SCHEDULE 40 PVC, COLLECTOR LINE AND DOWNSPOUT CONNECTION, BEHIND CURB
  - ITEM 611 - CATCH BASIN, NO. 3 RECONSTRUCTED TO GRADE, REBUILD TOP 18" USING PRECAST TOP
  - ITEM 611 - CATCH BASIN NO. 3, INSTALL NEW FRAME AND VANE GRATES
  - ITEM 611 - CATCH BASIN, NO. 3A RECONSTRUCTED TO GRADE, REBUILD TOP 18" USING PRECAST TOP
  - ITEM 611 - CATCH BASIN NO. 3A, INSTALL NEW FRAME AND VANE GRATES
  - ITEM 611 - INLET, S.G.I., INSTALL NEW FRAME AND VANE GRATES
  - ITEM 611 - CATCH BASIN, NO. 2-2B, INCLUDING REMOVAL OF EXISTING CATCH BASIN, MATCH EXISTING TOP OF GRATE AND INVERTS
  - ITEM 611 - DOWNSPOUT EXTENSION
  - ITEM 611 - STORM MANHOLE ADJUSTED TO GRADE
  - ITEM SPL - SANITARY MANHOLE ADJUSTED TO GRADE
  - ITEM 644 - STOP LINE, 24"
  - ITEM 611 - 12" CONDUIT, MATCH EXISTING SLOPE AND INVERTS

- NOTES**
- THE FINAL FULL DEPTH REPAIR AREAS WILL BE MARKED WHEN THE PLANING OPERATIONS HAVE BEEN COMPLETED.
  - THE FINAL CURB PLACEMENT LIMITS AND WORK LIMITS WILL BE MARKED PRIOR TO BEGINNING CONSTRUCTION.
  - ADJUSTMENTS TO VALVE BOXES, METERS OR OTHER ASSOCIATED GAS, ELECTRIC, TELEPHONE OR CABLE FACILITIES, IF NECESSARY, SHALL BE CONSIDERED INCIDENTAL TO THE CONTRACT AND SHALL BE COMPLETED PER UTILITY OWNER REQUIREMENTS.



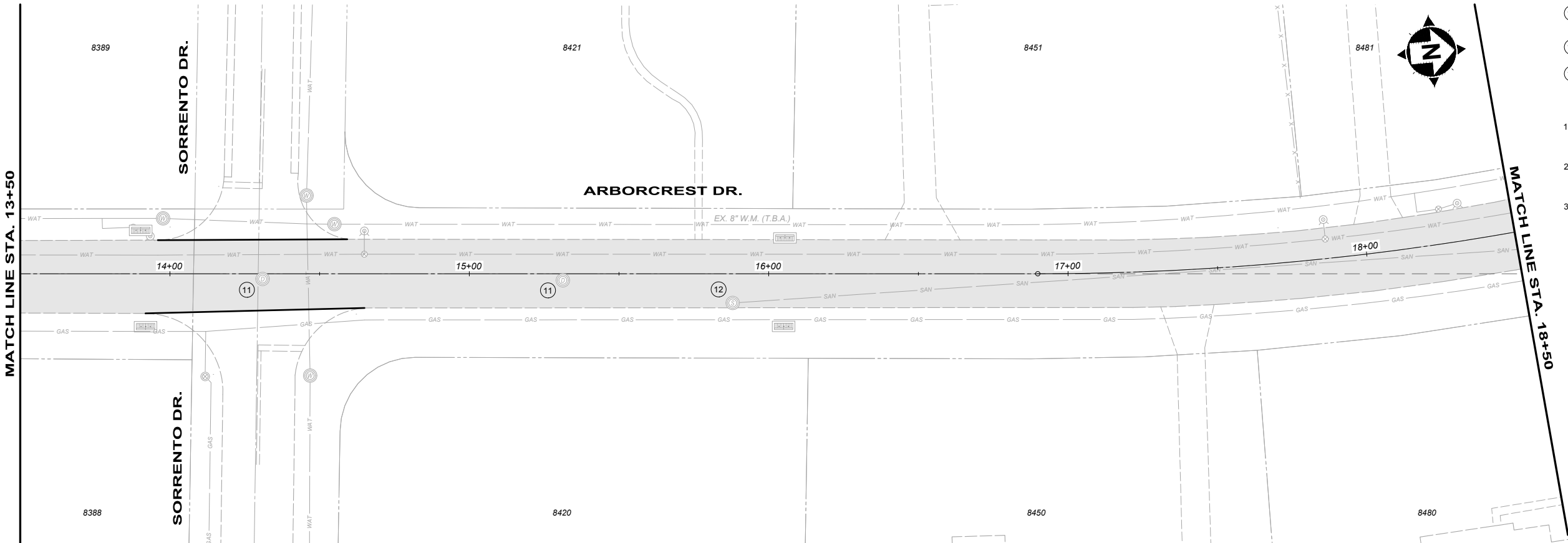
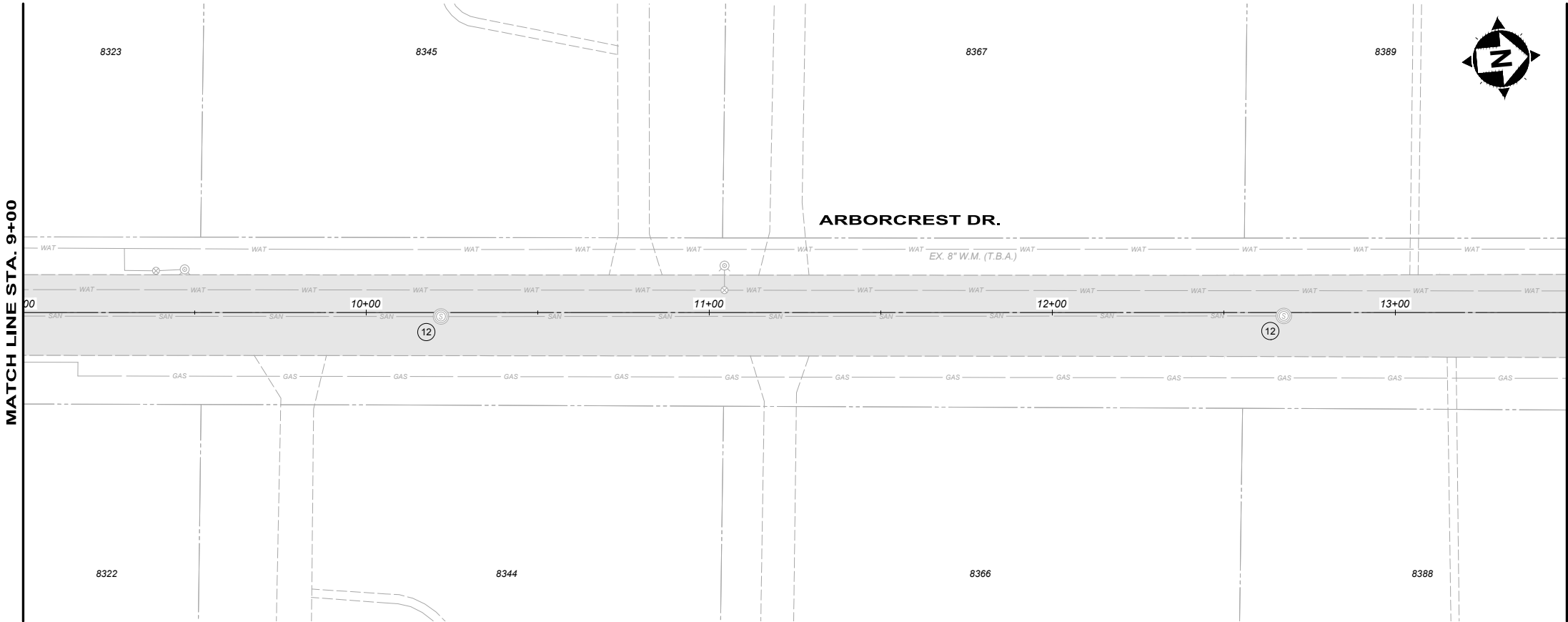
**your trusted advisor**  
engineers  
architects  
planners  
consultants

ISSUED FOR:	ISSUE DATE:	SCALE:	DESIGNED BY:	DRAWN BY:	CHECKED BY:
	MAY 2019	1" = 40'	KGOE	SIFRA	FTWE
NO	REVISION	DATE			

**2019 STREET PROGRAM**  
AMBERLEY VILLAGE  
HAMILTON COUNTY, OHIO

**ARBORCREST DRIVE**  
BEGIN WORK TO STA. 9+00

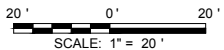
PROJECT NO.	
190071	
DISCIPLINE	
CIVIL	
SHEET NAME	
C1	
SHEET	OF
1	16



- LEGEND**
- ITEM 254 - PAVEMENT PLANING
  - ITEM 253 - FULL DEPTH PAVEMENT REPAIR (SEE NOTE 1)
  - ITEM 609 - ROLLED COMBINATION CURB AND GUTTER, REMOVAL AND REPLACEMENT (SEE NOTE 2)

- KEYNOTES**
- ITEM SPL - CONCRETE MASONRY, LOW PROFILE HEADWALL (SEE DETAIL)
  - ITEM 605 - 6" SCHEDULE 40 PVC, COLLECTOR LINE AND DOWNSPOUT CONNECTION, UNDER CURB
  - ITEM 605 - 6" SCHEDULE 40 PVC, COLLECTOR LINE AND DOWNSPOUT CONNECTION, BEHIND CURB
  - ITEM 611 - CATCH BASIN, NO. 3 RECONSTRUCTED TO GRADE, REBUILD TOP 18" USING PRECAST TOP
  - ITEM 611 - CATCH BASIN NO. 3, INSTALL NEW FRAME AND VANE GRATES
  - ITEM 611 - CATCH BASIN, NO. 3A RECONSTRUCTED TO GRADE, REBUILD TOP 18" USING PRECAST TOP
  - ITEM 611 - CATCH BASIN NO. 3A, INSTALL NEW FRAME AND VANE GRATES
  - ITEM 611 - INLET, S.G.I., INSTALL NEW FRAME AND VANE GRATES
  - ITEM 611 - CATCH BASIN, NO. 2-2B, INCLUDING REMOVAL OF EXISTING CATCH BASIN, MATCH EXISTING TOP OF GRATE AND INVERTS
  - ITEM 611 - DOWNSPOUT EXTENSION
  - ITEM 611 - STORM MANHOLE ADJUSTED TO GRADE
  - ITEM SPL - SANITARY MANHOLE ADJUSTED TO GRADE
  - ITEM 644 - STOP LINE, 24"
  - ITEM 611 - 12" CONDUIT, MATCH EXISTING SLOPE AND INVERTS

- NOTES**
- THE FINAL FULL DEPTH REPAIR AREAS WILL BE MARKED WHEN THE PLANING OPERATIONS HAVE BEEN COMPLETED.
  - THE FINAL CURB PLACEMENT LIMITS AND WORK LIMITS WILL BE MARKED PRIOR TO BEGINNING CONSTRUCTION.
  - ADJUSTMENTS TO VALVE BOXES, METERS OR OTHER ASSOCIATED GAS, ELECTRIC, TELEPHONE OR CABLE FACILITIES, IF NECESSARY, SHALL BE CONSIDERED INCIDENTAL TO THE CONTRACT AND SHALL BE COMPLETED PER UTILITY OWNER REQUIREMENTS.



your trusted advisor

engineers  
architects  
planners

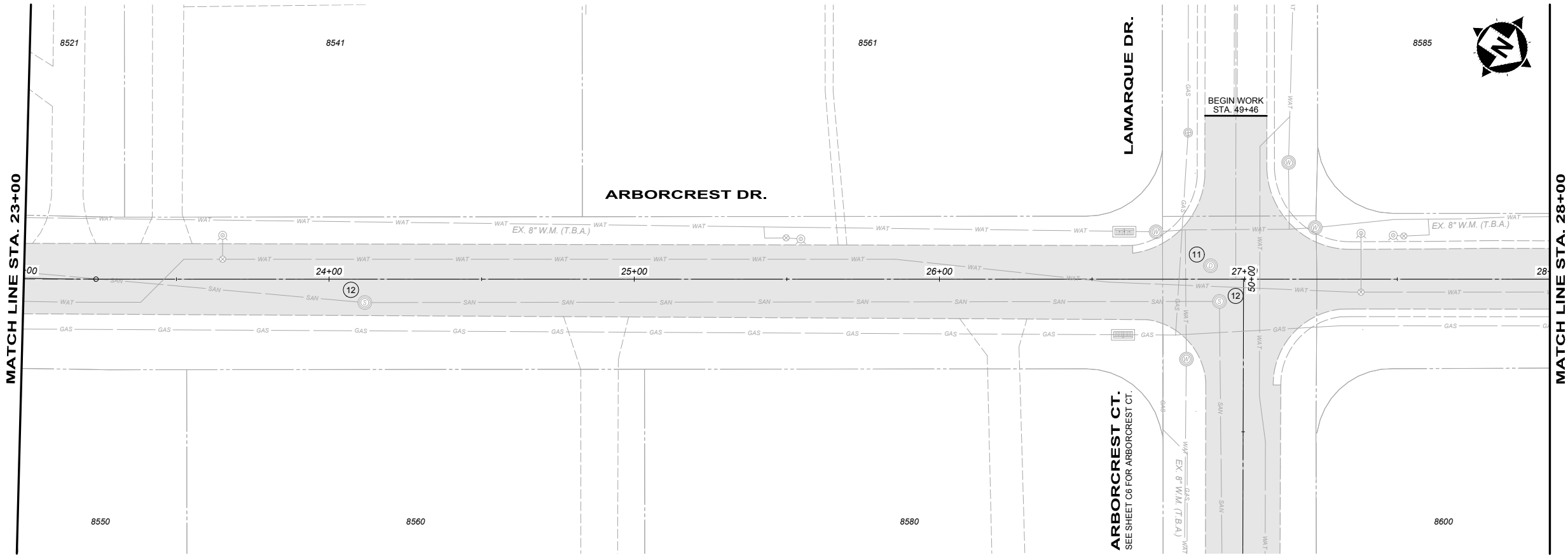
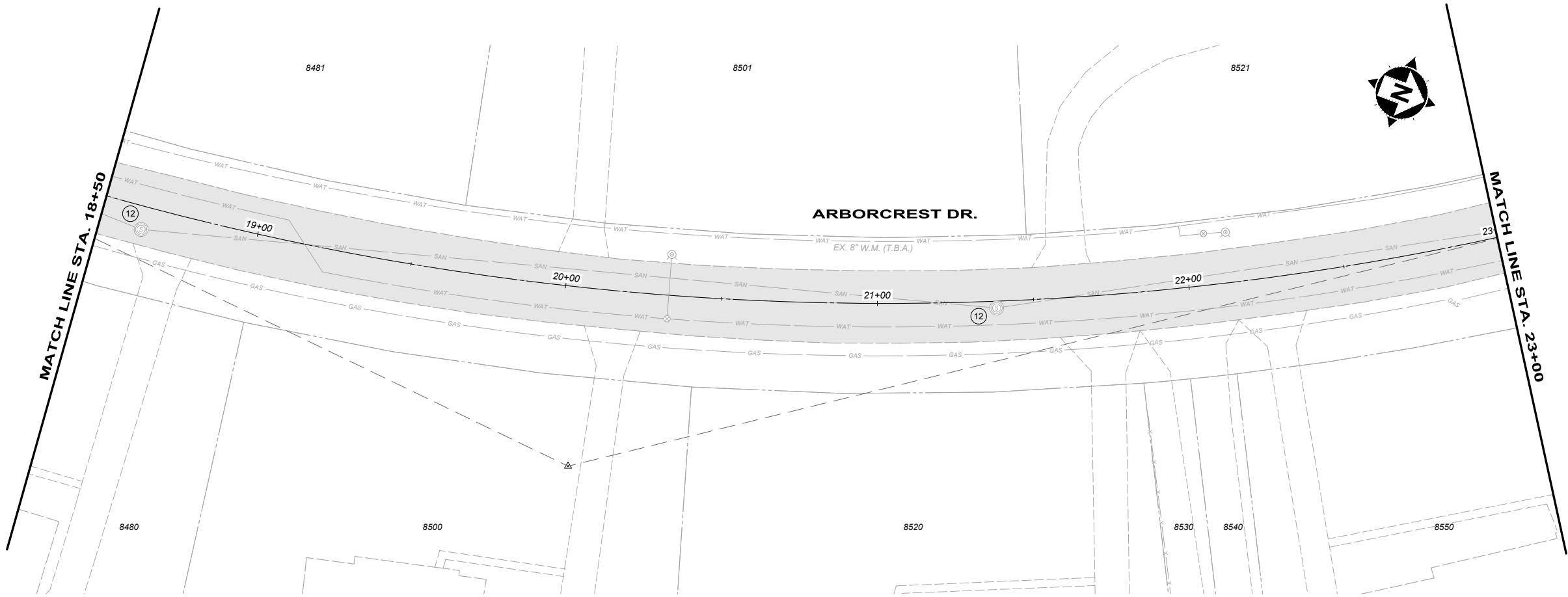
ISSUED FOR:	ISSUE DATE:	SCALE:	DESIGNED BY:	DRAWN BY:	CHECKED BY:
	MAY 2019	1" = 40'	KGOE	SIFRA	FTWE

NO	REVISION	DATE

2019 STREET PROGRAM  
AMBERLEY VILLAGE  
HAMILTON COUNTY, OHIO

ARBORCREST DRIVE  
STA. 9+00 TO STA. 18+50

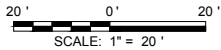
PROJECT NO.	
190071	
DISCIPLINE	
CIVIL	
SHEET NAME	
C2	
SHEET	OF
2	16



- LEGEND**
- ITEM 254 - PAVEMENT PLANING
  - ITEM 253 - FULL DEPTH PAVEMENT REPAIR (SEE NOTE 1)
  - ITEM 609 - ROLLED COMBINATION CURB AND GUTTER, REMOVAL AND REPLACEMENT (SEE NOTE 2)

- KEYNOTES**
- ITEM SPL - CONCRETE MASONRY, LOW PROFILE HEADWALL (SEE DETAIL)
  - ITEM 605 - 6" SCHEDULE 40 PVC, COLLECTOR LINE AND DOWNSPOUT CONNECTION, UNDER CURB
  - ITEM 605 - 6" SCHEDULE 40 PVC, COLLECTOR LINE AND DOWNSPOUT CONNECTION, BEHIND CURB
  - ITEM 611 - CATCH BASIN, NO. 3 RECONSTRUCTED TO GRADE, REBUILD TOP 18" USING PRECAST TOP
  - ITEM 611 - CATCH BASIN NO. 3, INSTALL NEW FRAME AND VANE GRATES
  - ITEM 611 - CATCH BASIN, NO. 3A RECONSTRUCTED TO GRADE, REBUILD TOP 18" USING PRECAST TOP
  - ITEM 611 - CATCH BASIN NO. 3A, INSTALL NEW FRAME AND VANE GRATES
  - ITEM 611 - INLET, S.G.I., INSTALL NEW FRAME AND VANE GRATES
  - ITEM 611 - CATCH BASIN, NO. 2-2B, INCLUDING REMOVAL OF EXISTING CATCH BASIN, MATCH EXISTING TOP OF GRATE AND INVERTS
  - ITEM 611 - DOWNSPOUT EXTENSION
  - ITEM 611 - STORM MANHOLE ADJUSTED TO GRADE
  - ITEM SPL - SANITARY MANHOLE ADJUSTED TO GRADE
  - ITEM 644 - STOP LINE, 24"
  - ITEM 611 - 12" CONDUIT, MATCH EXISTING SLOPE AND INVERTS

- NOTES**
- THE FINAL FULL DEPTH REPAIR AREAS WILL BE MARKED WHEN THE PLANING OPERATIONS HAVE BEEN COMPLETED.
  - THE FINAL CURB PLACEMENT LIMITS AND WORK LIMITS WILL BE MARKED PRIOR TO BEGINNING CONSTRUCTION.
  - ADJUSTMENTS TO VALVE BOXES, METERS OR OTHER ASSOCIATED GAS, ELECTRIC, TELEPHONE OR CABLE FACILITIES, IF NECESSARY, SHALL BE CONSIDERED INCIDENTAL TO THE CONTRACT AND SHALL BE COMPLETED PER UTILITY OWNER REQUIREMENTS.



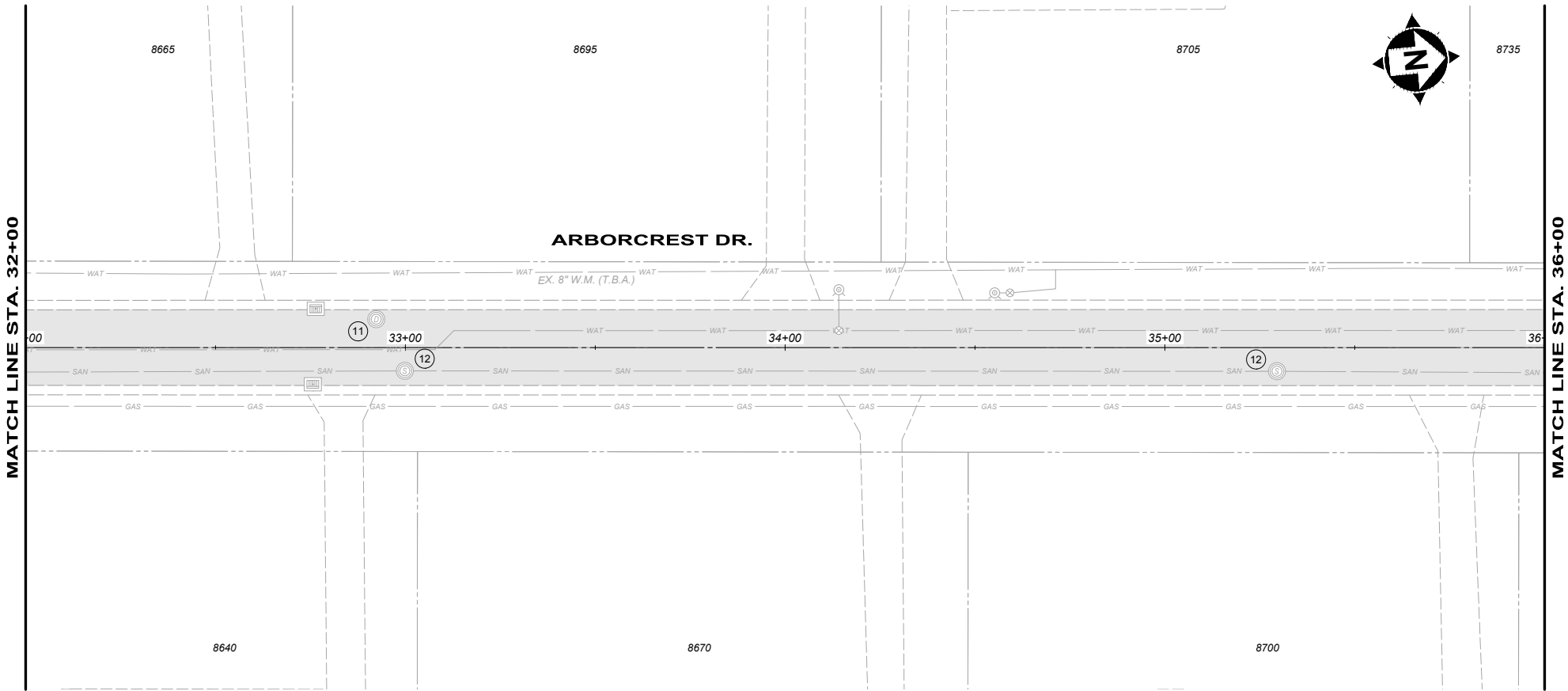
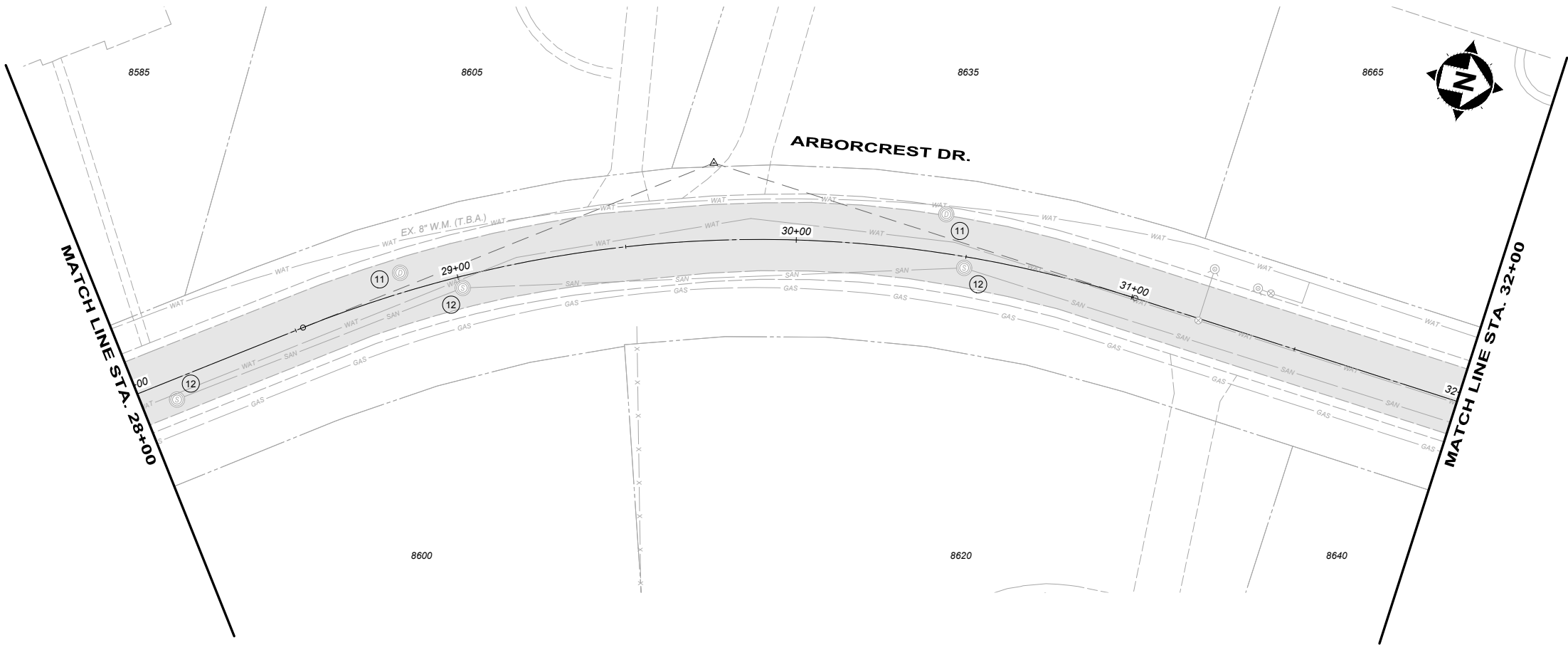
your trusted advisor  
engineers  
architects  
planners  
consultants

ISSUED FOR:	ISSUE DATE:	SCALE:	DESIGNED BY:	DRAWN BY:	CHECKED BY:
	MAY 2019	1" = 40'	KGOE	SIFRA	FTWE
NO	REVISION	DATE			

2019 STREET PROGRAM  
AMBERLEY VILLAGE  
HAMILTON COUNTY, OHIO

ARBORCREST DRIVE  
STA. 18+50 TO STA. 28+00

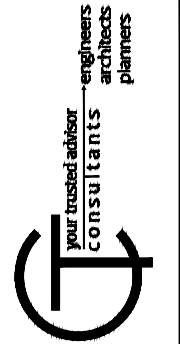
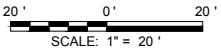
PROJECT NO.	
190071	
DISCIPLINE	
CIVIL	
SHEET NAME	
C3	
SHEET	OF
3	16



- LEGEND**
- ITEM 254 - PAVEMENT PLANING
  - ITEM 253 - FULL DEPTH PAVEMENT REPAIR (SEE NOTE 1)
  - ITEM 609 - ROLLED COMBINATION CURB AND GUTTER, REMOVAL AND REPLACEMENT (SEE NOTE 2)

- KEYNOTES**
- ITEM SPL - CONCRETE MASONRY, LOW PROFILE HEADWALL (SEE DETAIL)
  - ITEM 605 - 6" SCHEDULE 40 PVC, COLLECTOR LINE AND DOWNSPOUT CONNECTION, UNDER CURB
  - ITEM 605 - 6" SCHEDULE 40 PVC, COLLECTOR LINE AND DOWNSPOUT CONNECTION, BEHIND CURB
  - ITEM 611 - CATCH BASIN, NO. 3 RECONSTRUCTED TO GRADE, REBUILD TOP 18" USING PRECAST TOP
  - ITEM 611 - CATCH BASIN NO. 3, INSTALL NEW FRAME AND VANE GRATES
  - ITEM 611 - CATCH BASIN, NO. 3A RECONSTRUCTED TO GRADE, REBUILD TOP 18" USING PRECAST TOP
  - ITEM 611 - CATCH BASIN NO. 3A, INSTALL NEW FRAME AND VANE GRATES
  - ITEM 611 - INLET, S.G.I., INSTALL NEW FRAME AND VANE GRATES
  - ITEM 611 - CATCH BASIN, NO. 2-2B, INCLUDING REMOVAL OF EXISTING CATCH BASIN, MATCH EXISTING TOP OF GRATE AND INVERTS
  - ITEM 611 - DOWNSPOUT EXTENSION
  - ITEM 611 - STORM MANHOLE ADJUSTED TO GRADE
  - ITEM SPL - SANITARY MANHOLE ADJUSTED TO GRADE
  - ITEM 644 - STOP LINE, 24"
  - ITEM 611 - 12" CONDUIT, MATCH EXISTING SLOPE AND INVERTS

- NOTES**
- THE FINAL FULL DEPTH REPAIR AREAS WILL BE MARKED WHEN THE PLANING OPERATIONS HAVE BEEN COMPLETED.
  - THE FINAL CURB PLACEMENT LIMITS AND WORK LIMITS WILL BE MARKED PRIOR TO BEGINNING CONSTRUCTION.
  - ADJUSTMENTS TO VALVE BOXES, METERS OR OTHER ASSOCIATED GAS, ELECTRIC, TELEPHONE OR CABLE FACILITIES, IF NECESSARY, SHALL BE CONSIDERED INCIDENTAL TO THE CONTRACT AND SHALL BE COMPLETED PER UTILITY OWNER REQUIREMENTS.



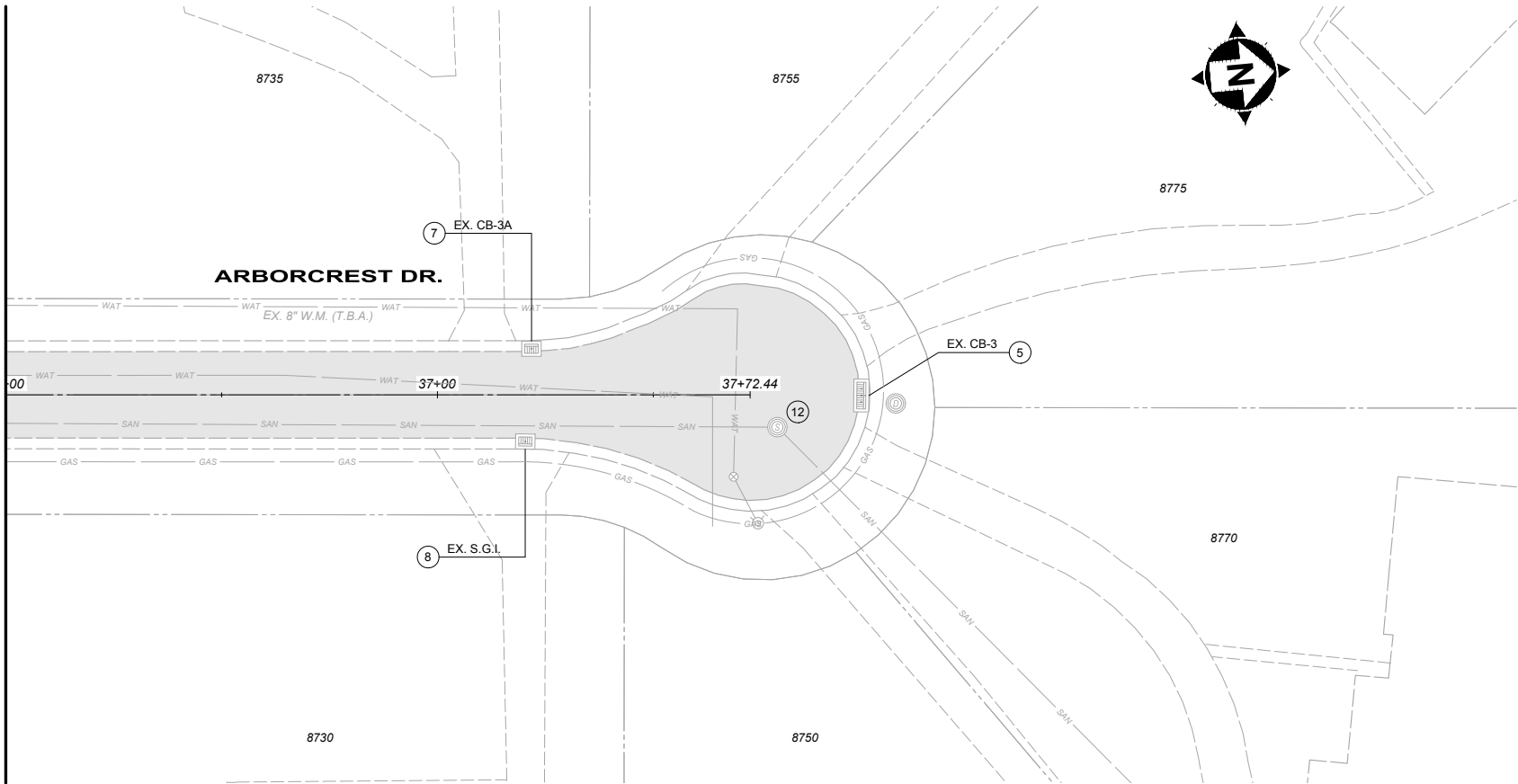
ISSUED FOR:	ISSUE DATE:	SCALE:	DESIGNED BY:	DRAWN BY:	CHECKED BY:
	MAY 2019	1" = 40'	KGOE	SIFRA	FTWE
NO	REVISION	DATE			

**2019 STREET PROGRAM**  
AMBERLEY VILLAGE  
HAMILTON COUNTY, OHIO

**ARBORCREST DRIVE**  
STA. 28+00 TO STA. 36+00

PROJECT NO. <b>190071</b>	
DISCIPLINE <b>CIVIL</b>	
SHEET NAME <b>C4</b>	
SHEET <b>4</b>	OF <b>16</b>

MATCH LINE STA. 36+00



LEGEND

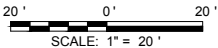
- ITEM 254 - PAVEMENT PLANING
- ITEM 253 - FULL DEPTH PAVEMENT REPAIR (SEE NOTE 1)
- ITEM 609 - ROLLED COMBINATION CURB AND GUTTER, REMOVAL AND REPLACEMENT (SEE NOTE 2)

KEYNOTES

- ITEM SPL - CONCRETE MASONRY, LOW PROFILE HEADWALL (SEE DETAIL)
- ITEM 605 - 6" SCHEDULE 40 PVC, COLLECTOR LINE AND DOWNSPOUT CONNECTION, UNDER CURB
- ITEM 605 - 6" SCHEDULE 40 PVC, COLLECTOR LINE AND DOWNSPOUT CONNECTION, BEHIND CURB
- ITEM 611 - CATCH BASIN, NO. 3 RECONSTRUCTED TO GRADE, REBUILD TOP 18" USING PRECAST TOP
- ITEM 611 - CATCH BASIN NO. 3, INSTALL NEW FRAME AND VANE GRATES
- ITEM 611 - CATCH BASIN, NO. 3A RECONSTRUCTED TO GRADE, REBUILD TOP 18" USING PRECAST TOP
- ITEM 611 - CATCH BASIN NO. 3A, INSTALL NEW FRAME AND VANE GRATES
- ITEM 611 - INLET, S.G.I., INSTALL NEW FRAME AND VANE GRATES
- ITEM 611 - CATCH BASIN, NO. 2-2B, INCLUDING REMOVAL OF EXISTING CATCH BASIN, MATCH EXISTING TOP OF GRATE AND INVERTS
- ITEM 611 - DOWNSPOUT EXTENSION
- ITEM 611 - STORM MANHOLE ADJUSTED TO GRADE
- ITEM SPL - SANITARY MANHOLE ADJUSTED TO GRADE
- ITEM 644 - STOP LINE, 24"
- ITEM 611 - 12" CONDUIT, MATCH EXISTING SLOPE AND INVERTS

NOTES

- THE FINAL FULL DEPTH REPAIR AREAS WILL BE MARKED WHEN THE PLANING OPERATIONS HAVE BEEN COMPLETED.
- THE FINAL CURB PLACEMENT LIMITS AND WORK LIMITS WILL BE MARKED PRIOR TO BEGINNING CONSTRUCTION.
- ADJUSTMENTS TO VALVE BOXES, METERS OR OTHER ASSOCIATED GAS, ELECTRIC, TELEPHONE OR CABLE FACILITIES, IF NECESSARY, SHALL BE CONSIDERED INCIDENTAL TO THE CONTRACT AND SHALL BE COMPLETED PER UTILITY OWNER REQUIREMENTS.

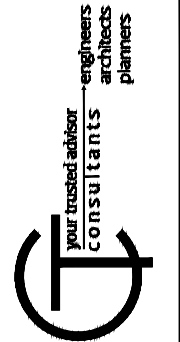


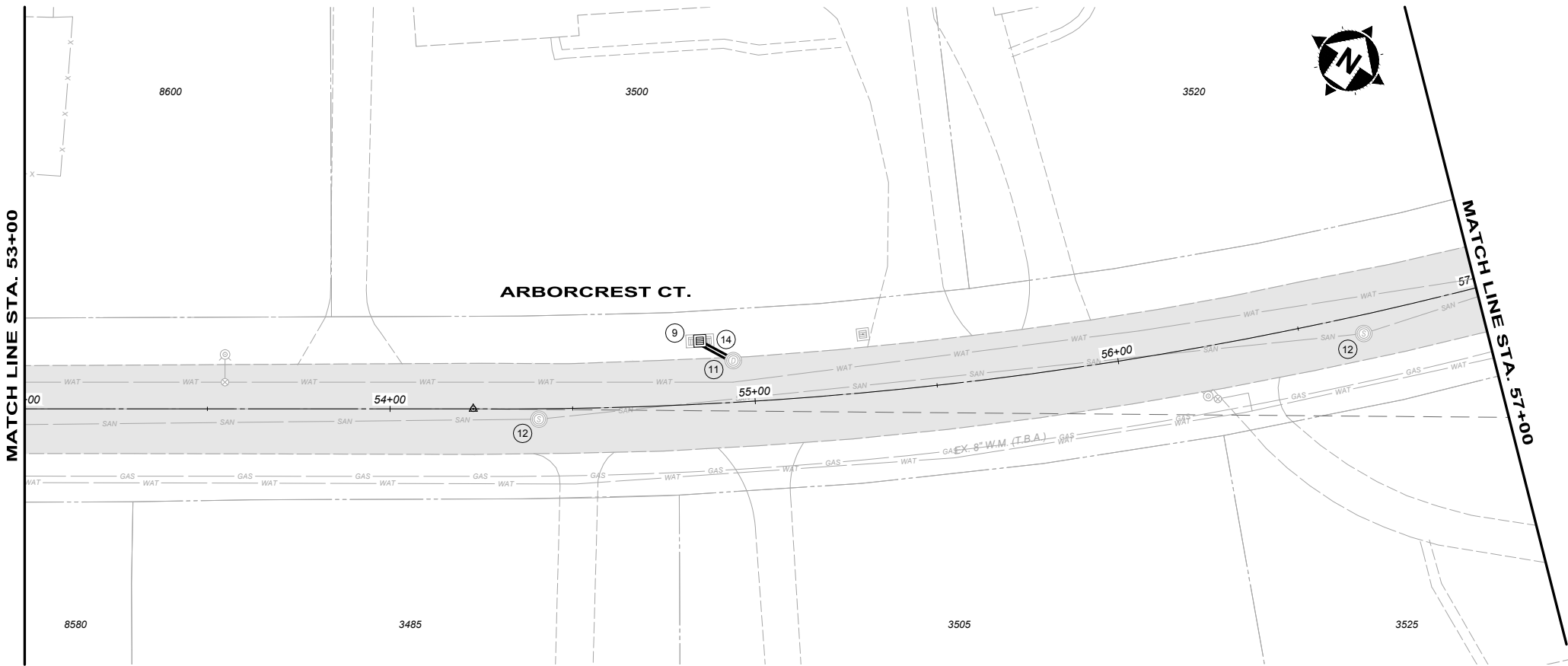
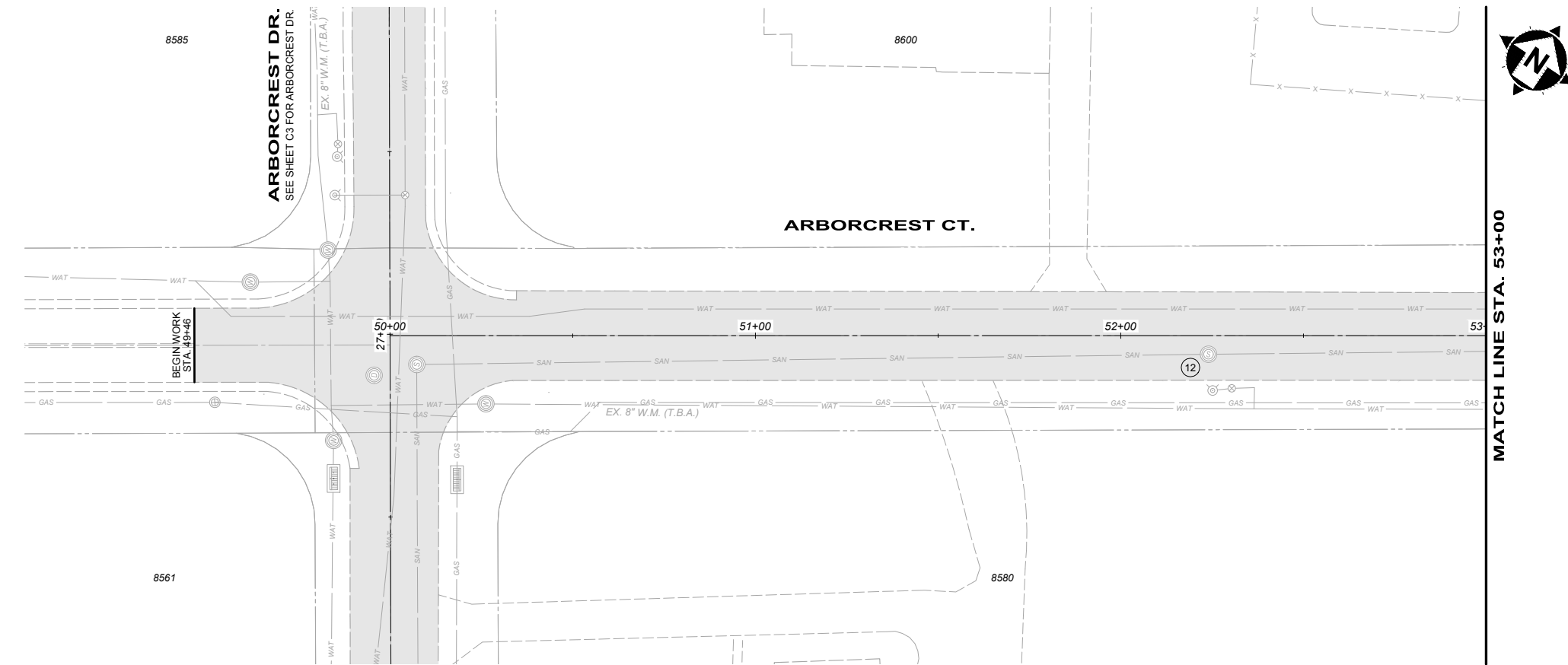
2019 STREET PROGRAM  
AMBERLEY VILLAGE  
HAMILTON COUNTY, OHIO

ARBORCREST DRIVE  
STA. 36+00 TO END WORK

PROJECT NO.	
190071	
DISCIPLINE	
CIVIL	
SHEET NAME	
C5	
SHEET	OF
5	16

ISSUED FOR:	NO	REVISION	DATE
ISSUE DATE:	MAY 2019		
SCALE:	1" = 40'		
DESIGNED BY:	KGOE		
DRAWN BY:	SIFRA		
CHECKED BY:	FTWE		

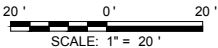




- LEGEND**
- ITEM 254 - PAVEMENT PLANING
  - ITEM 253 - FULL DEPTH PAVEMENT REPAIR (SEE NOTE 1)
  - ITEM 609 - ROLLED COMBINATION CURB AND GUTTER, REMOVAL AND REPLACEMENT (SEE NOTE 2)

- KEYNOTES**
- ITEM SPL - CONCRETE MASONRY, LOW PROFILE HEADWALL (SEE DETAIL)
  - ITEM 605 - 6" SCHEDULE 40 PVC, COLLECTOR LINE AND DOWNSPOUT CONNECTION, UNDER CURB
  - ITEM 605 - 6" SCHEDULE 40 PVC, COLLECTOR LINE AND DOWNSPOUT CONNECTION, BEHIND CURB
  - ITEM 611 - CATCH BASIN, NO. 3 RECONSTRUCTED TO GRADE, REBUILD TOP 18" USING PRECAST TOP
  - ITEM 611 - CATCH BASIN NO. 3, INSTALL NEW FRAME AND VANE GRATES
  - ITEM 611 - CATCH BASIN, NO. 3A RECONSTRUCTED TO GRADE, REBUILD TOP 18" USING PRECAST TOP
  - ITEM 611 - CATCH BASIN NO. 3A, INSTALL NEW FRAME AND VANE GRATES
  - ITEM 611 - INLET, S.G.I., INSTALL NEW FRAME AND VANE GRATES
  - ITEM 611 - CATCH BASIN, NO. 2-2B, INCLUDING REMOVAL OF EXISTING CATCH BASIN, MATCH EXISTING TOP OF GRATE AND INVERTS
  - ITEM 611 - DOWNSPOUT EXTENSION
  - ITEM 611 - STORM MANHOLE ADJUSTED TO GRADE
  - ITEM SPL - SANITARY MANHOLE ADJUSTED TO GRADE
  - ITEM 644 - STOP LINE, 24"
  - ITEM 611 - 12" CONDUIT, MATCH EXISTING SLOPE AND INVERTS

- NOTES**
- THE FINAL FULL DEPTH REPAIR AREAS WILL BE MARKED WHEN THE PLANING OPERATIONS HAVE BEEN COMPLETED.
  - THE FINAL CURB PLACEMENT LIMITS AND WORK LIMITS WILL BE MARKED PRIOR TO BEGINNING CONSTRUCTION.
  - ADJUSTMENTS TO VALVE BOXES, METERS OR OTHER ASSOCIATED GAS, ELECTRIC, TELEPHONE OR CABLE FACILITIES, IF NECESSARY, SHALL BE CONSIDERED INCIDENTAL TO THE CONTRACT AND SHALL BE COMPLETED PER UTILITY OWNER REQUIREMENTS.

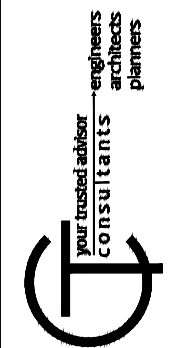


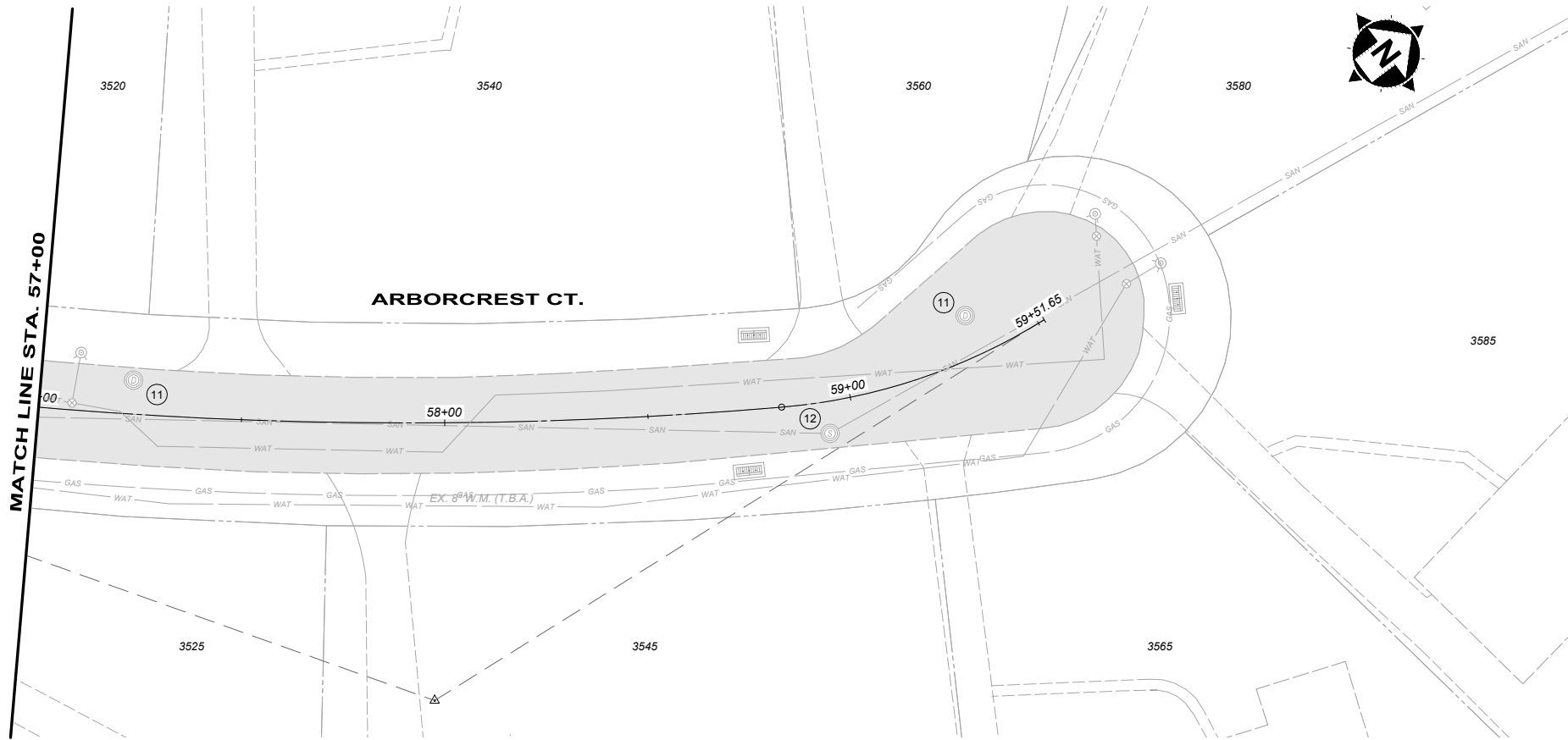
**2019 STREET PROGRAM**  
**AMBERLEY VILLAGE**  
**HAMILTON COUNTY, OHIO**

**ARBORCREST COURT**  
**BEGIN WORK TO STA. 57+00**

PROJECT NO.	
190071	
DISCIPLINE	
CIVIL	
SHEET NAME	
C6	
SHEET	OF
6	16

ISSUED FOR:	NO	REVISION	DATE
ISSUE DATE:	MAY 2019		
SCALE:	1" = 40'		
DESIGNED BY:	KGOE		
DRAWN BY:	SIFRA		
CHECKED BY:	FTWE		





#### LEGEND

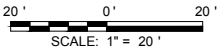
- ITEM 254 - PAVEMENT PLANING
- ITEM 253 - FULL DEPTH PAVEMENT REPAIR (SEE NOTE 1)
- ITEM 609 - ROLLED COMBINATION CURB AND GUTTER, REMOVAL AND REPLACEMENT (SEE NOTE 2)

#### KEYNOTES

- ITEM SPL - CONCRETE MASONRY, LOW PROFILE HEADWALL (SEE DETAIL)
- ITEM 605 - 6" SCHEDULE 40 PVC, COLLECTOR LINE AND DOWNSPOUT CONNECTION, UNDER CURB
- ITEM 605 - 6" SCHEDULE 40 PVC, COLLECTOR LINE AND DOWNSPOUT CONNECTION, BEHIND CURB
- ITEM 611 - CATCH BASIN, NO. 3 RECONSTRUCTED TO GRADE, REBUILD TOP 18" USING PRECAST TOP
- ITEM 611 - CATCH BASIN NO. 3, INSTALL NEW FRAME AND VANE GRATES
- ITEM 611 - CATCH BASIN, NO. 3A RECONSTRUCTED TO GRADE, REBUILD TOP 18" USING PRECAST TOP
- ITEM 611 - CATCH BASIN NO. 3A, INSTALL NEW FRAME AND VANE GRATES
- ITEM 611 - INLET, S.G.I., INSTALL NEW FRAME AND VANE GRATES
- ITEM 611 - CATCH BASIN, NO. 2-2B, INCLUDING REMOVAL OF EXISTING CATCH BASIN, MATCH EXISTING TOP OF GRATE AND INVERTS
- ITEM 611 - DOWNSPOUT EXTENSION
- ITEM 611 - STORM MANHOLE ADJUSTED TO GRADE
- ITEM SPL - SANITARY MANHOLE ADJUSTED TO GRADE
- ITEM 644 - STOP LINE, 24"
- ITEM 611 - 12" CONDUIT, MATCH EXISTING SLOPE AND INVERTS

#### NOTES

- THE FINAL FULL DEPTH REPAIR AREAS WILL BE MARKED WHEN THE PLANING OPERATIONS HAVE BEEN COMPLETED.
- THE FINAL CURB PLACEMENT LIMITS AND WORK LIMITS WILL BE MARKED PRIOR TO BEGINNING CONSTRUCTION.
- ADJUSTMENTS TO VALVE BOXES, METERS OR OTHER ASSOCIATED GAS, ELECTRIC, TELEPHONE OR CABLE FACILITIES, IF NECESSARY, SHALL BE CONSIDERED INCIDENTAL TO THE CONTRACT AND SHALL BE COMPLETED PER UTILITY OWNER REQUIREMENTS.



2019 STREET PROGRAM  
AMBERLEY VILLAGE  
HAMILTON COUNTY, OHIO

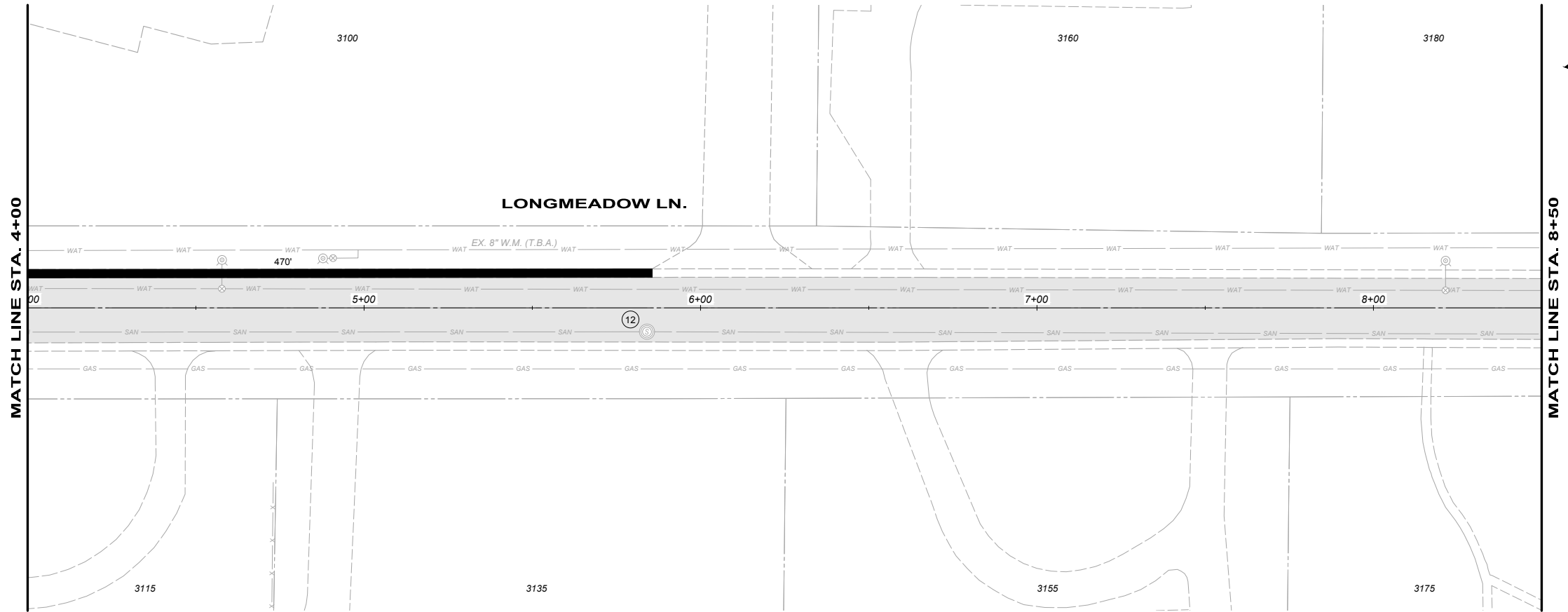
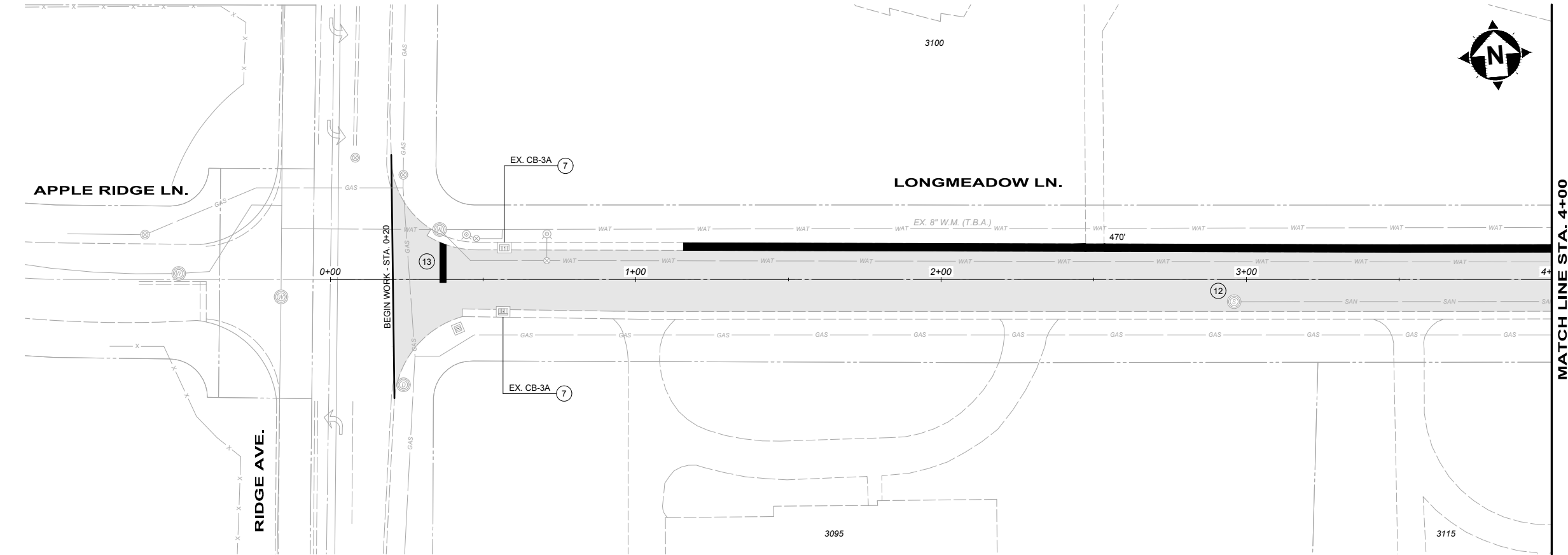
ARBORCREST COURT  
STA. 57+00 TO STA. END WORK

ISSUED FOR:	NO	REVISION	DATE
ISSUE DATE:			
SCALE:			
DESIGNED BY:			
DRAWN BY:			
CHECKED BY:			

MAY 2019	1" = 40'	KGOE	SIFRA	FTWE
----------	----------	------	-------	------

PROJECT NO.	190071
DISCIPLINE	CIVIL
SHEET NAME	C7
SHEET	7
OF	16

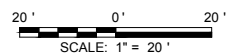




- LEGEND**
- ITEM 254 - PAVEMENT PLANING
  - ITEM 253 - FULL DEPTH PAVEMENT REPAIR (SEE NOTE 1)
  - ITEM 609 - ROLLED COMBINATION CURB AND GUTTER, REMOVAL AND REPLACEMENT (SEE NOTE 2)

- KEYNOTES**
- ITEM SPL - CONCRETE MASONRY, LOW PROFILE HEADWALL (SEE DETAIL)
  - ITEM 605 - 6" SCHEDULE 40 PVC, COLLECTOR LINE AND DOWNSPOUT CONNECTION, UNDER CURB
  - ITEM 605 - 6" SCHEDULE 40 PVC, COLLECTOR LINE AND DOWNSPOUT CONNECTION, BEHIND CURB
  - ITEM 611 - CATCH BASIN, NO. 3 RECONSTRUCTED TO GRADE, REBUILD TOP 18" USING PRECAST TOP
  - ITEM 611 - CATCH BASIN NO. 3, INSTALL NEW FRAME AND VANE GRATES
  - ITEM 611 - CATCH BASIN, NO. 3A RECONSTRUCTED TO GRADE, REBUILD TOP 18" USING PRECAST TOP
  - ITEM 611 - CATCH BASIN NO. 3A, INSTALL NEW FRAME AND VANE GRATES
  - ITEM 611 - INLET, S.G.I., INSTALL NEW FRAME AND VANE GRATES
  - ITEM 611 - CATCH BASIN, NO. 2-2B, INCLUDING REMOVAL OF EXISTING CATCH BASIN, MATCH EXISTING TOP OF GRATE AND INVERTS
  - ITEM 611 - DOWNSPOUT EXTENSION
  - ITEM 611 - STORM MANHOLE ADJUSTED TO GRADE
  - ITEM SPL - SANITARY MANHOLE ADJUSTED TO GRADE
  - ITEM 644 - STOP LINE, 24"
  - ITEM 611 - 12" CONDUIT, MATCH EXISTING SLOPE AND INVERTS

- NOTES**
- THE FINAL FULL DEPTH REPAIR AREAS WILL BE MARKED WHEN THE PLANING OPERATIONS HAVE BEEN COMPLETED.
  - THE FINAL CURB PLACEMENT LIMITS AND WORK LIMITS WILL BE MARKED PRIOR TO BEGINNING CONSTRUCTION.
  - ADJUSTMENTS TO VALVE BOXES, METERS OR OTHER ASSOCIATED GAS, ELECTRIC, TELEPHONE OR CABLE FACILITIES, IF NECESSARY, SHALL BE CONSIDERED INCIDENTAL TO THE CONTRACT AND SHALL BE COMPLETED PER UTILITY OWNER REQUIREMENTS.



**your trusted advisor**  
**consultants**

engineers  
architects  
planners

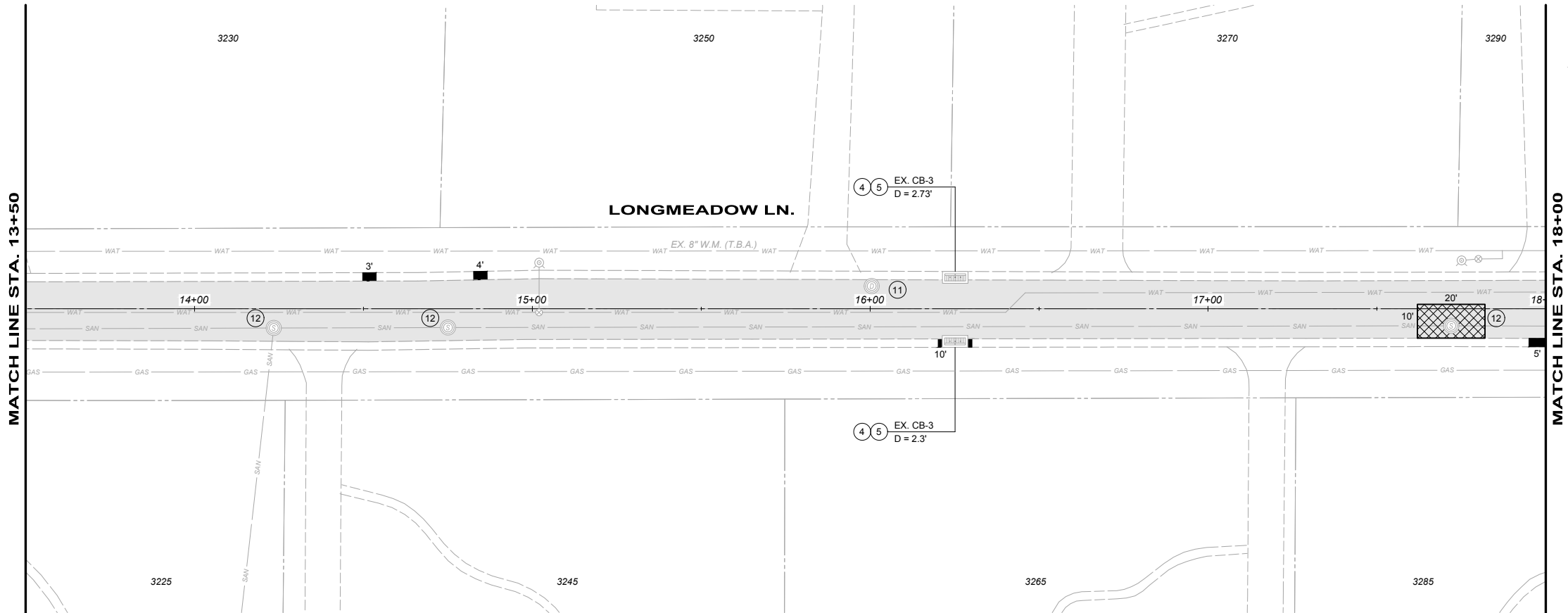
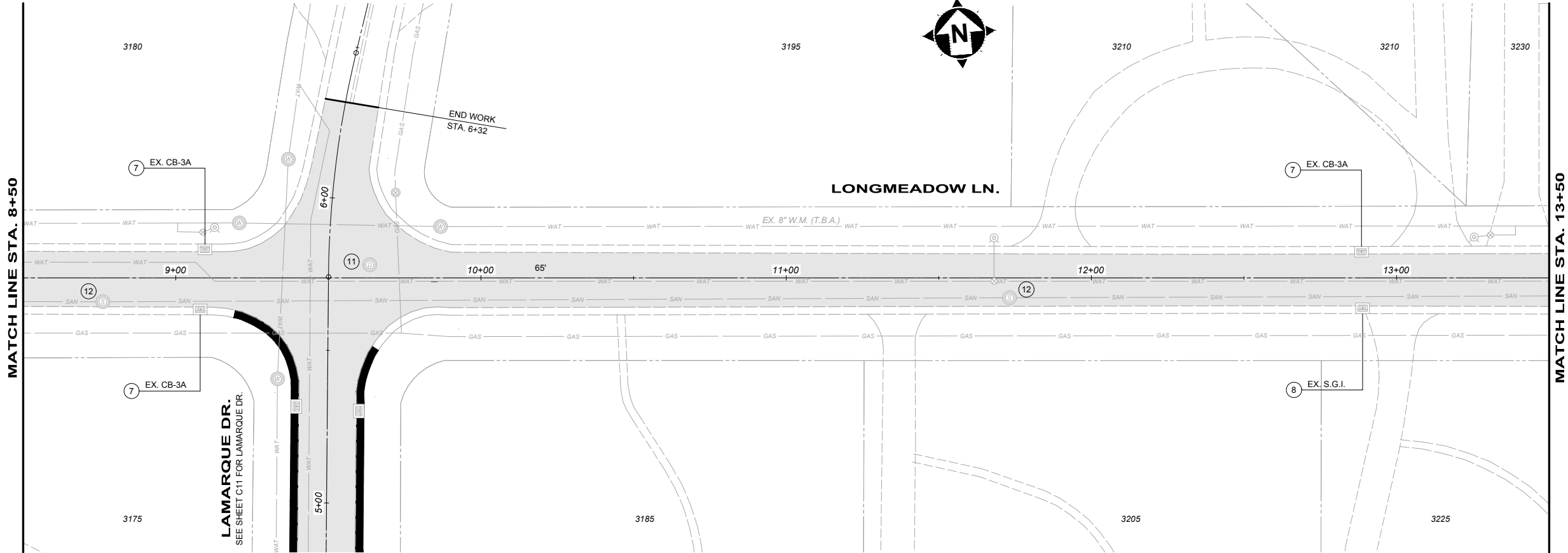
ISSUED FOR:	ISSUE DATE:	SCALE:	DESIGNED BY:	DRAWN BY:	CHECKED BY:
	MAY 2019	1" = 40'	KGOE	SIFRA	FTWE
NO	REVISION	DATE			

**2019 STREET PROGRAM**  
**AMBERLEY VILLAGE**  
**HAMILTON COUNTY, OHIO**

**LONGMEADOW LANE**  
**BEGIN WORK TO STA. 8+50**

PROJECT NO. <b>190071</b>	
DISCIPLINE <b>CIVIL</b>	
SHEET NAME <b>C8</b>	
SHEET <b>8</b>	OF <b>16</b>

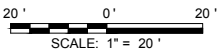




- LEGEND**
- ITEM 254 - PAVEMENT PLANING
  - ITEM 253 - FULL DEPTH PAVEMENT REPAIR (SEE NOTE 1)
  - ITEM 609 - ROLLED COMBINATION CURB AND GUTTER, REMOVAL AND REPLACEMENT (SEE NOTE 2)

- KEYNOTES**
- ITEM SPL - CONCRETE MASONRY, LOW PROFILE HEADWALL (SEE DETAIL)
  - ITEM 605 - 6" SCHEDULE 40 PVC, COLLECTOR LINE AND DOWNSPOUT CONNECTION, UNDER CURB
  - ITEM 605 - 6" SCHEDULE 40 PVC, COLLECTOR LINE AND DOWNSPOUT CONNECTION, BEHIND CURB
  - ITEM 611 - CATCH BASIN, NO. 3 RECONSTRUCTED TO GRADE, REBUILD TOP 18" USING PRECAST TOP
  - ITEM 611 - CATCH BASIN NO. 3, INSTALL NEW FRAME AND VANE GRATES
  - ITEM 611 - CATCH BASIN, NO. 3A RECONSTRUCTED TO GRADE, REBUILD TOP 18" USING PRECAST TOP
  - ITEM 611 - CATCH BASIN NO. 3A, INSTALL NEW FRAME AND VANE GRATES
  - ITEM 611 - INLET, S.G.I., INSTALL NEW FRAME AND VANE GRATES
  - ITEM 611 - CATCH BASIN, NO. 2-2B, INCLUDING REMOVAL OF EXISTING CATCH BASIN, MATCH EXISTING TOP OF GRATE AND INVERTS
  - ITEM 611 - DOWNSPOUT EXTENSION
  - ITEM 611 - STORM MANHOLE ADJUSTED TO GRADE
  - ITEM SPL - SANITARY MANHOLE ADJUSTED TO GRADE
  - ITEM 644 - STOP LINE, 24"
  - ITEM 611 - 12" CONDUIT, MATCH EXISTING SLOPE AND INVERTS

- NOTES**
- THE FINAL FULL DEPTH REPAIR AREAS WILL BE MARKED WHEN THE PLANING OPERATIONS HAVE BEEN COMPLETED.
  - THE FINAL CURB PLACEMENT LIMITS AND WORK LIMITS WILL BE MARKED PRIOR TO BEGINNING CONSTRUCTION.
  - ADJUSTMENTS TO VALVE BOXES, METERS OR OTHER ASSOCIATED GAS, ELECTRIC, TELEPHONE OR CABLE FACILITIES, IF NECESSARY, SHALL BE CONSIDERED INCIDENTAL TO THE CONTRACT AND SHALL BE COMPLETED PER UTILITY OWNER REQUIREMENTS.



**2019 STREET PROGRAM**  
AMBERLEY VILLAGE  
HAMILTON COUNTY, OHIO

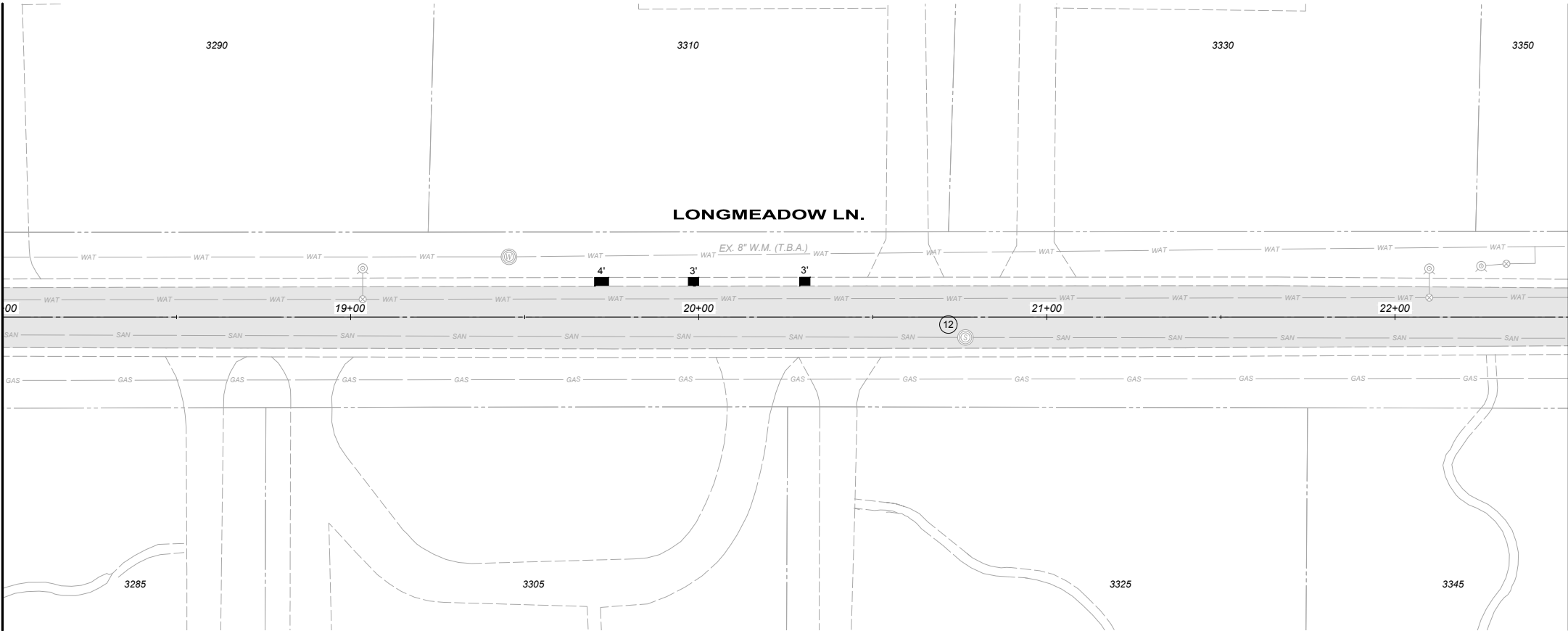
**LONGMEADOW LANE**  
STA. 8+50 TO STA. 18+00

PROJECT NO.	
190071	
DISCIPLINE	
CIVIL	
SHEET NAME	
C9	
SHEET	OF
9	16

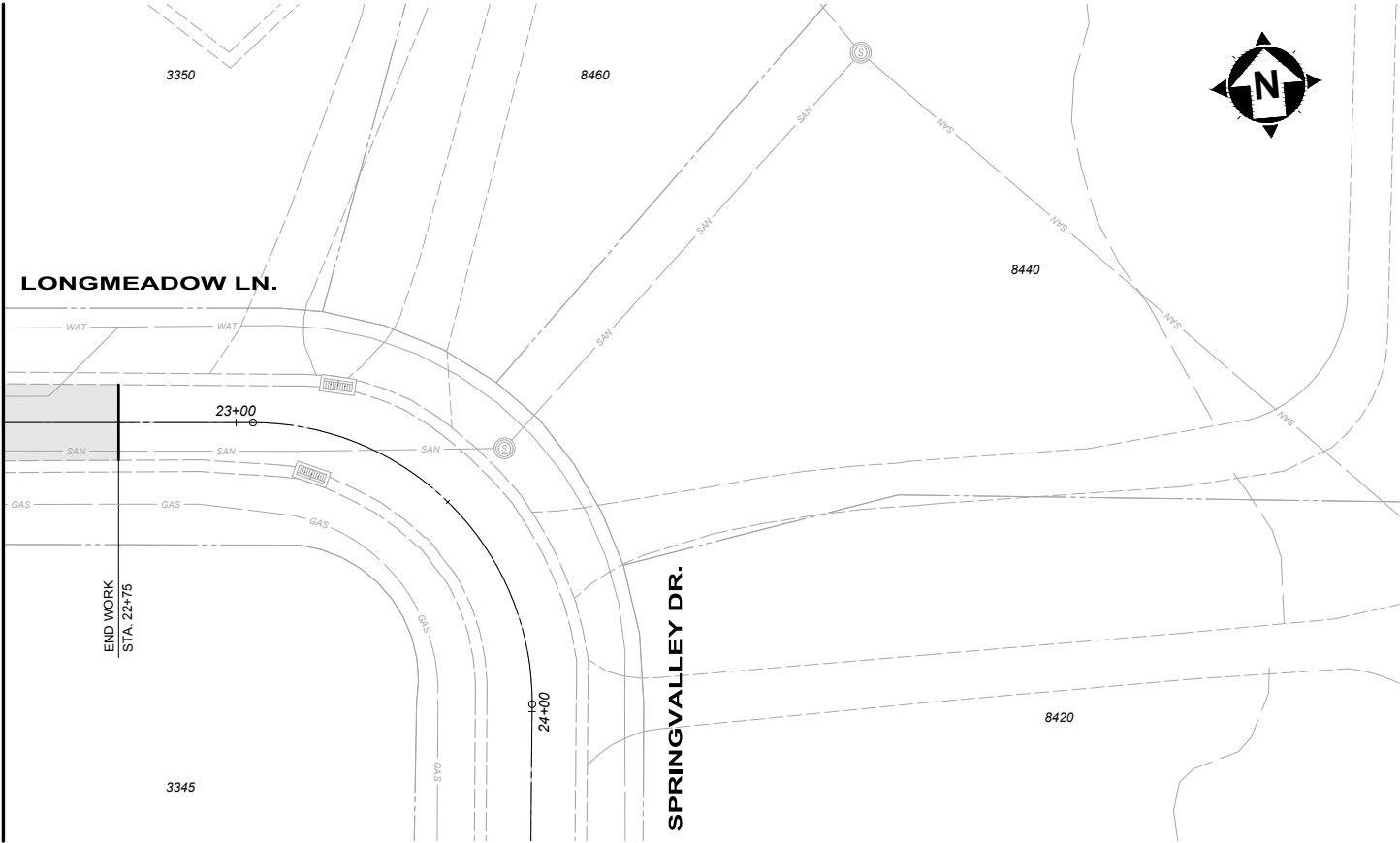
ISSUED FOR:	ISSUE DATE:	SCALE:	DESIGNED BY:	DRAWN BY:	CHECKED BY:
	MAY 2019	1" = 40'	KGOE	SIFRA	FTWE
NO	REVISION	DATE			



MATCH LINE STA. 18+00



MATCH LINE STA. 22+50



LEGEND

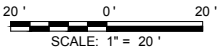
- ITEM 254 - PAVEMENT PLANING
- ITEM 253 - FULL DEPTH PAVEMENT REPAIR (SEE NOTE 1)
- ITEM 609 - ROLLED COMBINATION CURB AND GUTTER, REMOVAL AND REPLACEMENT (SEE NOTE 2)

KEYNOTES

- 1) ITEM SPL - CONCRETE MASONRY, LOW PROFILE HEADWALL (SEE DETAIL)
- 2) ITEM 605 - 6" SCHEDULE 40 PVC, COLLECTOR LINE AND DOWNSPOUT CONNECTION, UNDER CURB
- 3) ITEM 605 - 6" SCHEDULE 40 PVC, COLLECTOR LINE AND DOWNSPOUT CONNECTION, BEHIND CURB
- 4) ITEM 611 - CATCH BASIN, NO. 3 RECONSTRUCTED TO GRADE, REBUILD TOP 18" USING PRECAST TOP
- 5) ITEM 611 - CATCH BASIN NO. 3, INSTALL NEW FRAME AND VANE GRATES
- 6) ITEM 611 - CATCH BASIN, NO. 3A RECONSTRUCTED TO GRADE, REBUILD TOP 18" USING PRECAST TOP
- 7) ITEM 611 - CATCH BASIN NO. 3A, INSTALL NEW FRAME AND VANE GRATES
- 8) ITEM 611 - INLET, S.G.I., INSTALL NEW FRAME AND VANE GRATES
- 9) ITEM 611 - CATCH BASIN, NO. 2-2B, INCLUDING REMOVAL OF EXISTING CATCH BASIN, MATCH EXISTING TOP OF GRATE AND INVERTS
- 10) ITEM 611 - DOWNSPOUT EXTENSION
- 11) ITEM 611 - STORM MANHOLE ADJUSTED TO GRADE
- 12) ITEM SPL - SANITARY MANHOLE ADJUSTED TO GRADE
- 13) ITEM 644 - STOP LINE, 24"
- 14) ITEM 611 - 12" CONDUIT, MATCH EXISTING SLOPE AND INVERTS

NOTES

- 1.) THE FINAL FULL DEPTH REPAIR AREAS WILL BE MARKED WHEN THE PLANING OPERATIONS HAVE BEEN COMPLETED.
- 2.) THE FINAL CURB PLACEMENT LIMITS AND WORK LIMITS WILL BE MARKED PRIOR TO BEGINNING CONSTRUCTION.
- 3.) ADJUSTMENTS TO VALVE BOXES, METERS OR OTHER ASSOCIATED GAS, ELECTRIC, TELEPHONE OR CABLE FACILITIES, IF NECESSARY, SHALL BE CONSIDERED INCIDENTAL TO THE CONTRACT AND SHALL BE COMPLETED PER UTILITY OWNER REQUIREMENTS.



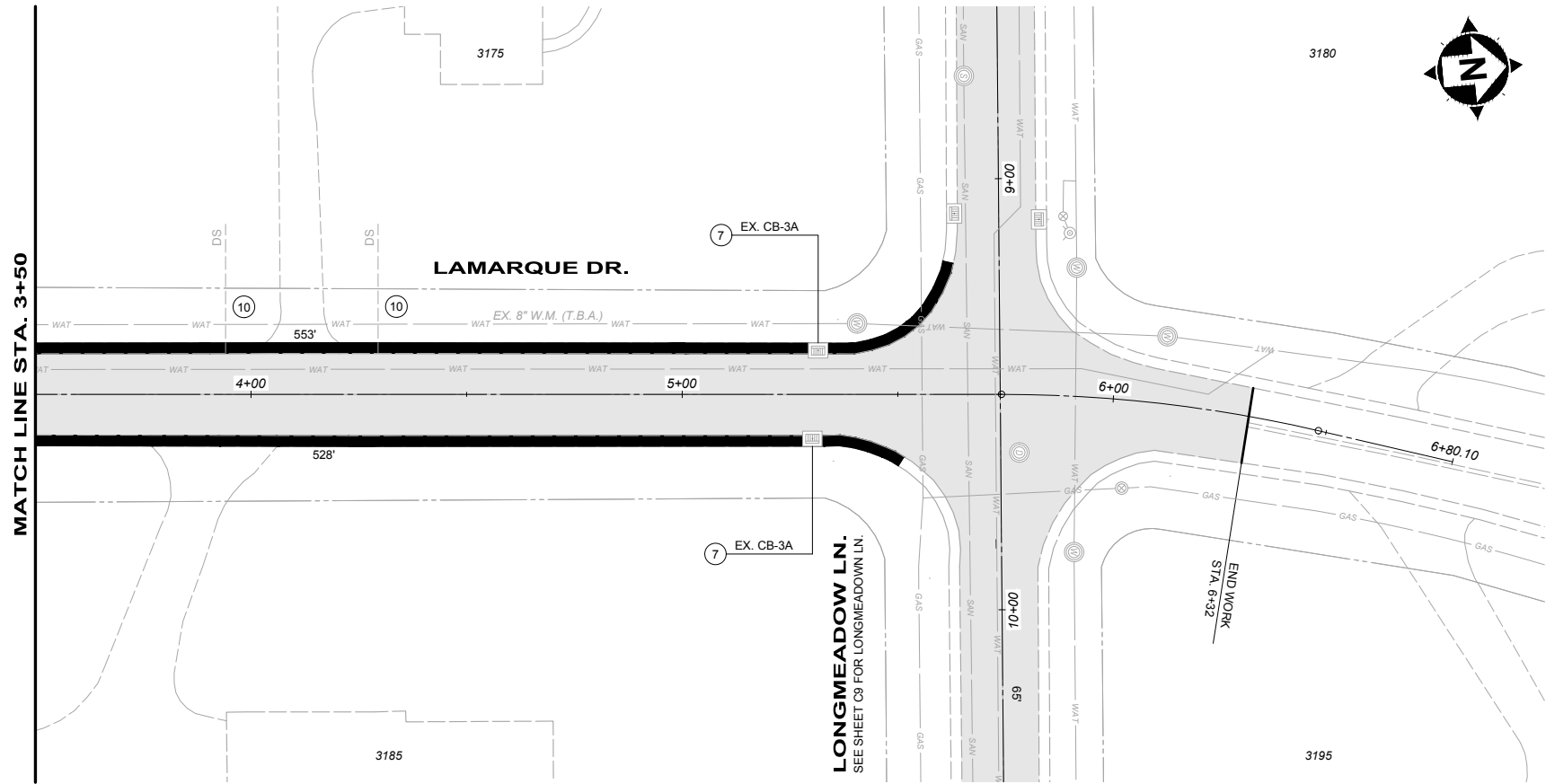
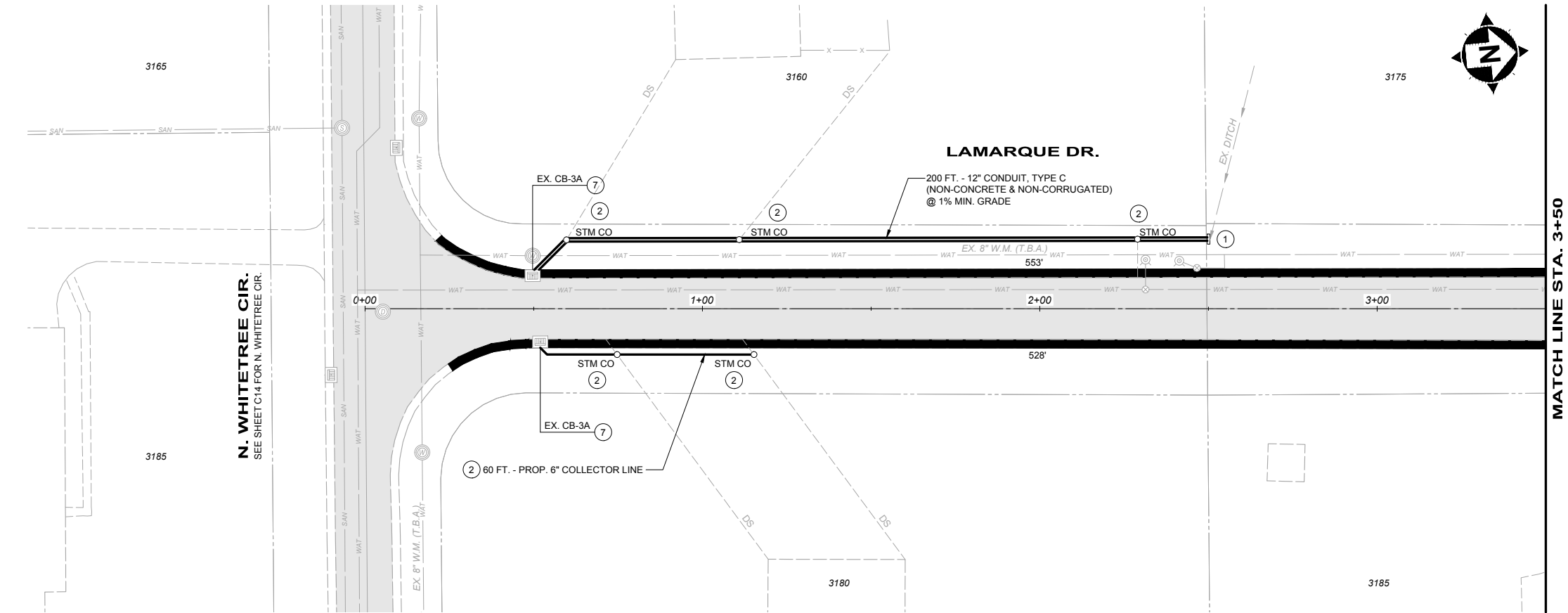
2019 STREET PROGRAM  
AMBERLEY VILLAGE  
HAMILTON COUNTY, OHIO

LONGMEADOW LANE  
STA. 18+00 TO END WORK

PROJECT NO. <b>190071</b>	
DISCIPLINE <b>CIVIL</b>	
SHEET NAME <b>C10</b>	
SHEET <b>10</b>	OF <b>16</b>

ISSUED FOR:	ISSUE DATE:	SCALE:	DESIGNED BY:	DRAWN BY:	CHECKED BY:
	MAY 2019	1" = 40'	KGOE	SIFRA	FTWE
NO	REVISION	DATE			

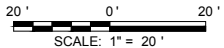




- LEGEND**
- ITEM 254 - PAVEMENT PLANING
  - ITEM 253 - FULL DEPTH PAVEMENT REPAIR (SEE NOTE 1)
  - ITEM 609 - ROLLED COMBINATION CURB AND GUTTER, REMOVAL AND REPLACEMENT (SEE NOTE 2)

- KEYNOTES**
- ITEM SPL - CONCRETE MASONRY, LOW PROFILE HEADWALL (SEE DETAIL)
  - ITEM 605 - 6" SCHEDULE 40 PVC, COLLECTOR LINE AND DOWNSPOUT CONNECTION, UNDER CURB
  - ITEM 605 - 6" SCHEDULE 40 PVC, COLLECTOR LINE AND DOWNSPOUT CONNECTION, BEHIND CURB
  - ITEM 611 - CATCH BASIN, NO. 3 RECONSTRUCTED TO GRADE, REBUILD TOP 18" USING PRECAST TOP
  - ITEM 611 - CATCH BASIN NO. 3, INSTALL NEW FRAME AND VANE GRATES
  - ITEM 611 - CATCH BASIN, NO. 3A RECONSTRUCTED TO GRADE, REBUILD TOP 18" USING PRECAST TOP
  - ITEM 611 - CATCH BASIN NO. 3A, INSTALL NEW FRAME AND VANE GRATES
  - ITEM 611 - INLET, S.G.I., INSTALL NEW FRAME AND VANE GRATES
  - ITEM 611 - CATCH BASIN, NO. 2-2B, INCLUDING REMOVAL OF EXISTING CATCH BASIN, MATCH EXISTING TOP OF GRATE AND INVERTS
  - ITEM 611 - DOWNSPOUT EXTENSION
  - ITEM 611 - STORM MANHOLE ADJUSTED TO GRADE
  - ITEM SPL - SANITARY MANHOLE ADJUSTED TO GRADE
  - ITEM 644 - STOP LINE, 24"
  - ITEM 611 - 12" CONDUIT, MATCH EXISTING SLOPE AND INVERTS

- NOTES**
- THE FINAL FULL DEPTH REPAIR AREAS WILL BE MARKED WHEN THE PLANING OPERATIONS HAVE BEEN COMPLETED.
  - THE FINAL CURB PLACEMENT LIMITS AND WORK LIMITS WILL BE MARKED PRIOR TO BEGINNING CONSTRUCTION.
  - ADJUSTMENTS TO VALVE BOXES, METERS OR OTHER ASSOCIATED GAS, ELECTRIC, TELEPHONE OR CABLE FACILITIES, IF NECESSARY, SHALL BE CONSIDERED INCIDENTAL TO THE CONTRACT AND SHALL BE COMPLETED PER UTILITY OWNER REQUIREMENTS.



your trusted advisor

engineers  
architects  
planners

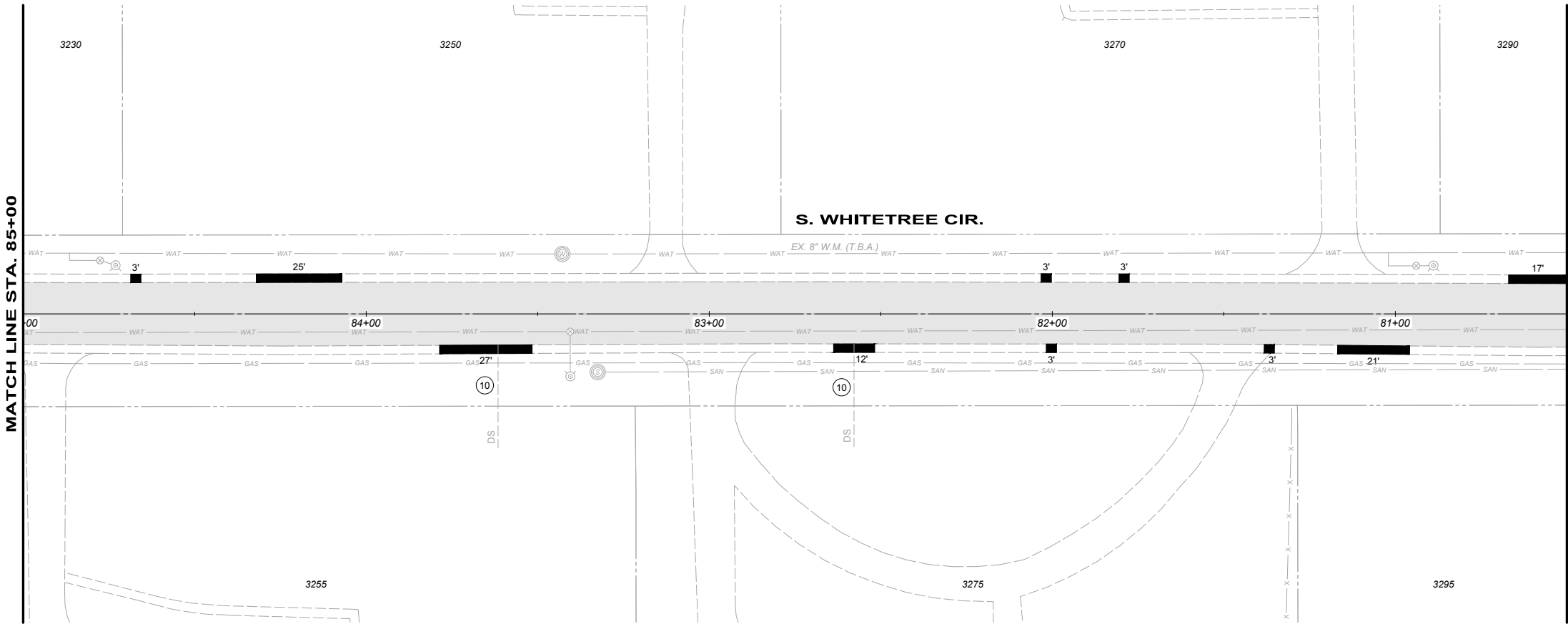
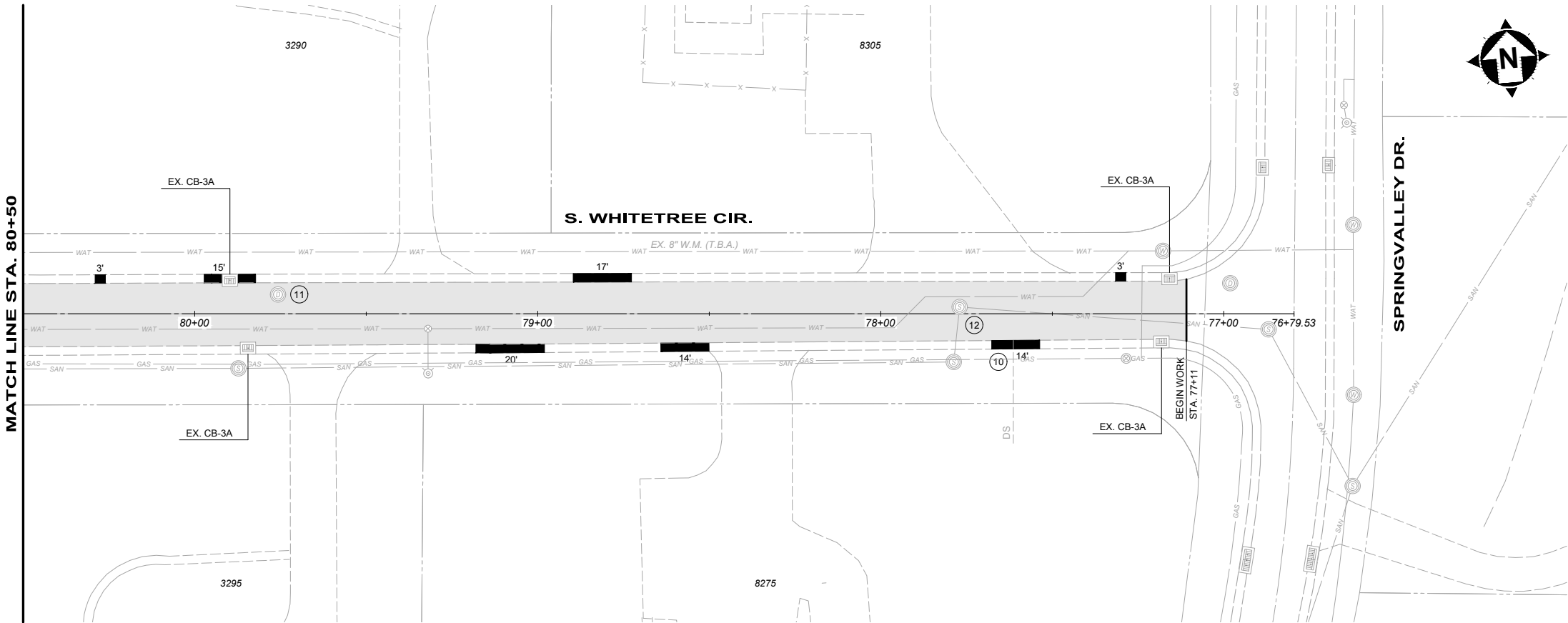
consultants

ISSUED FOR:	ISSUE DATE:	SCALE:	DESIGNED BY:	DRAWN BY:	CHECKED BY:
	MAY 2019	1" = 40'	KGOE	SIFRA	FTWE

2019 STREET PROGRAM  
AMBERLEY VILLAGE  
HAMILTON COUNTY, OHIO

LAMARQUE DRIVE

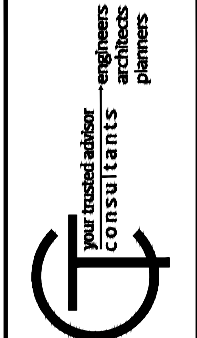
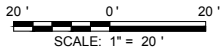
PROJECT NO. <b>190071</b>	
DISCIPLINE <b>CIVIL</b>	
SHEET NAME <b>C11</b>	
SHEET <b>11</b>	OF <b>16</b>



- LEGEND**
- ITEM 254 - PAVEMENT PLANING
  - ITEM 253 - FULL DEPTH PAVEMENT REPAIR (SEE NOTE 1)
  - ITEM 609 - ROLLED COMBINATION CURB AND GUTTER, REMOVAL AND REPLACEMENT (SEE NOTE 2)

- KEYNOTES**
- ITEM SPL - CONCRETE MASONRY, LOW PROFILE HEADWALL (SEE DETAIL)
  - ITEM 605 - 6" SCHEDULE 40 PVC, COLLECTOR LINE AND DOWNSPOUT CONNECTION, UNDER CURB
  - ITEM 605 - 6" SCHEDULE 40 PVC, COLLECTOR LINE AND DOWNSPOUT CONNECTION, BEHIND CURB
  - ITEM 611 - CATCH BASIN, NO. 3 RECONSTRUCTED TO GRADE, REBUILD TOP 18" USING PRECAST TOP
  - ITEM 611 - CATCH BASIN NO. 3, INSTALL NEW FRAME AND VANE GRATES
  - ITEM 611 - CATCH BASIN, NO. 3A RECONSTRUCTED TO GRADE, REBUILD TOP 18" USING PRECAST TOP
  - ITEM 611 - CATCH BASIN NO. 3A, INSTALL NEW FRAME AND VANE GRATES
  - ITEM 611 - INLET, S.G.I., INSTALL NEW FRAME AND VANE GRATES
  - ITEM 611 - CATCH BASIN, NO. 2-2B, INCLUDING REMOVAL OF EXISTING CATCH BASIN, MATCH EXISTING TOP OF GRATE AND INVERTS
  - ITEM 611 - DOWNSPOUT EXTENSION
  - ITEM 611 - STORM MANHOLE ADJUSTED TO GRADE
  - ITEM SPL - SANITARY MANHOLE ADJUSTED TO GRADE
  - ITEM 644 - STOP LINE, 24"
  - ITEM 611 - 12" CONDUIT, MATCH EXISTING SLOPE AND INVERTS

- NOTES**
- THE FINAL FULL DEPTH REPAIR AREAS WILL BE MARKED WHEN THE PLANING OPERATIONS HAVE BEEN COMPLETED.
  - THE FINAL CURB PLACEMENT LIMITS AND WORK LIMITS WILL BE MARKED PRIOR TO BEGINNING CONSTRUCTION.
  - ADJUSTMENTS TO VALVE BOXES, METERS OR OTHER ASSOCIATED GAS, ELECTRIC, TELEPHONE OR CABLE FACILITIES, IF NECESSARY, SHALL BE CONSIDERED INCIDENTAL TO THE CONTRACT AND SHALL BE COMPLETED PER UTILITY OWNER REQUIREMENTS.

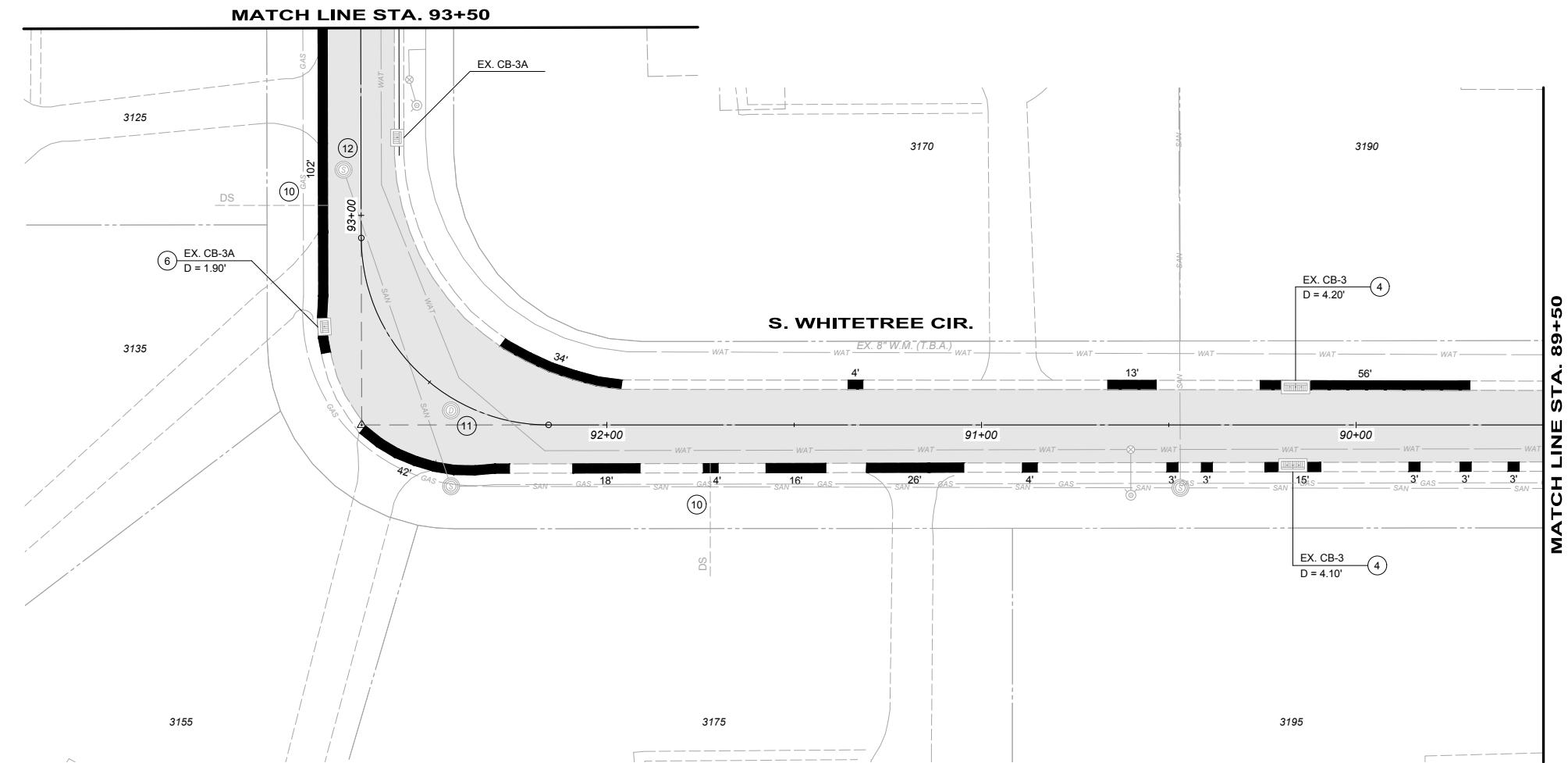
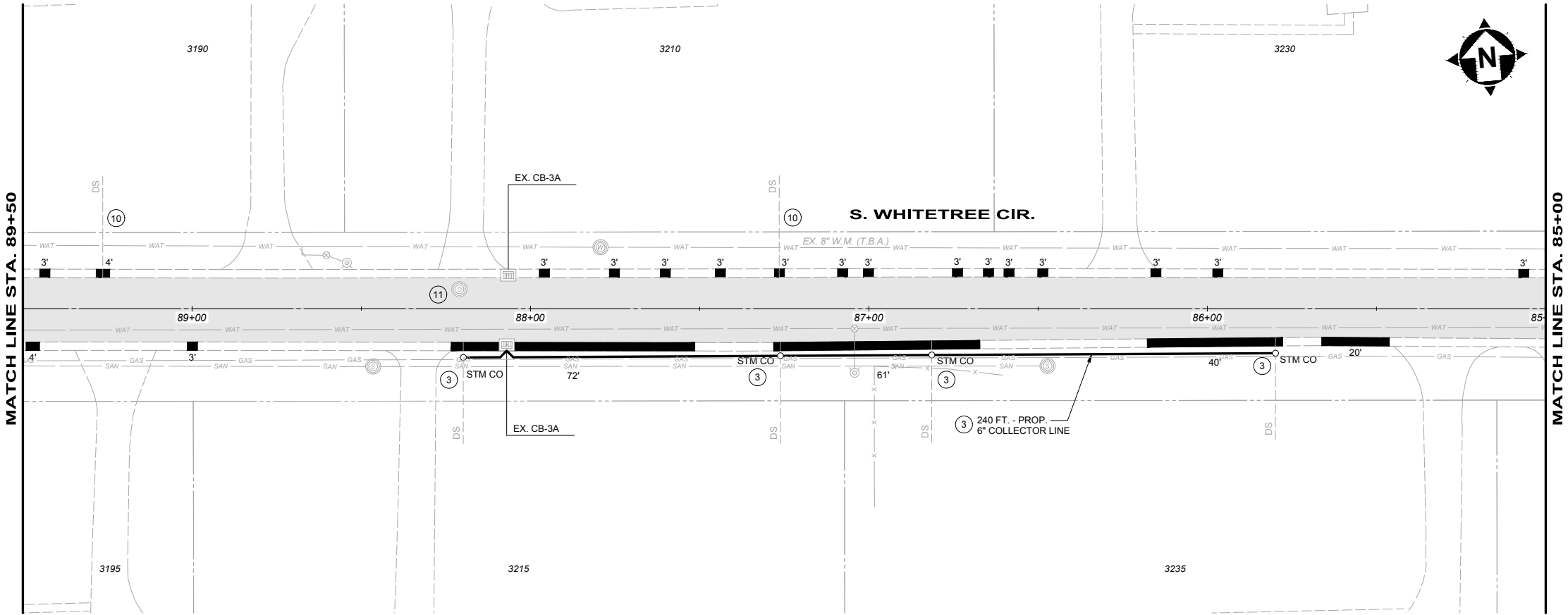


ISSUED FOR:	NO	REVISION	DATE
ISSUE DATE:	MAY 2019		
SCALE:	1" = 40'		
DESIGNED BY:	KGOE		
DRAWN BY:	SIFRA		
CHECKED BY:	FTWE		

**2019 STREET PROGRAM**  
**AMBERLEY VILLAGE**  
**HAMILTON COUNTY, OHIO**

**S. WHITETREE CIRCLE**  
**BEGIN WORK TO STA. 85+00**

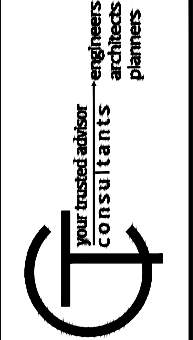
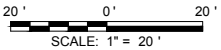
PROJECT NO.	190071
DISCIPLINE	CIVIL
SHEET NAME	C12
SHEET	12
OF	16



- LEGEND**
- ITEM 254 - PAVEMENT PLANING
  - ITEM 253 - FULL DEPTH PAVEMENT REPAIR (SEE NOTE 1)
  - ITEM 609 - ROLLED COMBINATION CURB AND GUTTER, REMOVAL AND REPLACEMENT (SEE NOTE 2)

- KEYNOTES**
- ITEM SPL - CONCRETE MASONRY, LOW PROFILE HEADWALL (SEE DETAIL)
  - ITEM 605 - 6" SCHEDULE 40 PVC, COLLECTOR LINE AND DOWNSPOUT CONNECTION, UNDER CURB
  - ITEM 605 - 6" SCHEDULE 40 PVC, COLLECTOR LINE AND DOWNSPOUT CONNECTION, BEHIND CURB
  - ITEM 611 - CATCH BASIN, NO. 3 RECONSTRUCTED TO GRADE, REBUILD TOP 18" USING PRECAST TOP
  - ITEM 611 - CATCH BASIN NO. 3, INSTALL NEW FRAME AND VANE GRATES
  - ITEM 611 - CATCH BASIN, NO. 3A RECONSTRUCTED TO GRADE, REBUILD TOP 18" USING PRECAST TOP
  - ITEM 611 - CATCH BASIN NO. 3A, INSTALL NEW FRAME AND VANE GRATES
  - ITEM 611 - INLET, S.G.I., INSTALL NEW FRAME AND VANE GRATES
  - ITEM 611 - CATCH BASIN, NO. 2-2B, INCLUDING REMOVAL OF EXISTING CATCH BASIN, MATCH EXISTING TOP OF GRATE AND INVERTS
  - ITEM 611 - DOWNSPOUT EXTENSION
  - ITEM 611 - STORM MANHOLE ADJUSTED TO GRADE
  - ITEM SPL - SANITARY MANHOLE ADJUSTED TO GRADE
  - ITEM 644 - STOP LINE, 24"
  - ITEM 611 - 12" CONDUIT, MATCH EXISTING SLOPE AND INVERTS

- NOTES**
- THE FINAL FULL DEPTH REPAIR AREAS WILL BE MARKED WHEN THE PLANING OPERATIONS HAVE BEEN COMPLETED.
  - THE FINAL CURB PLACEMENT LIMITS AND WORK LIMITS WILL BE MARKED PRIOR TO BEGINNING CONSTRUCTION.
  - ADJUSTMENTS TO VALVE BOXES, METERS OR OTHER ASSOCIATED GAS, ELECTRIC, TELEPHONE OR CABLE FACILITIES, IF NECESSARY, SHALL BE CONSIDERED INCIDENTAL TO THE CONTRACT AND SHALL BE COMPLETED PER UTILITY OWNER REQUIREMENTS.

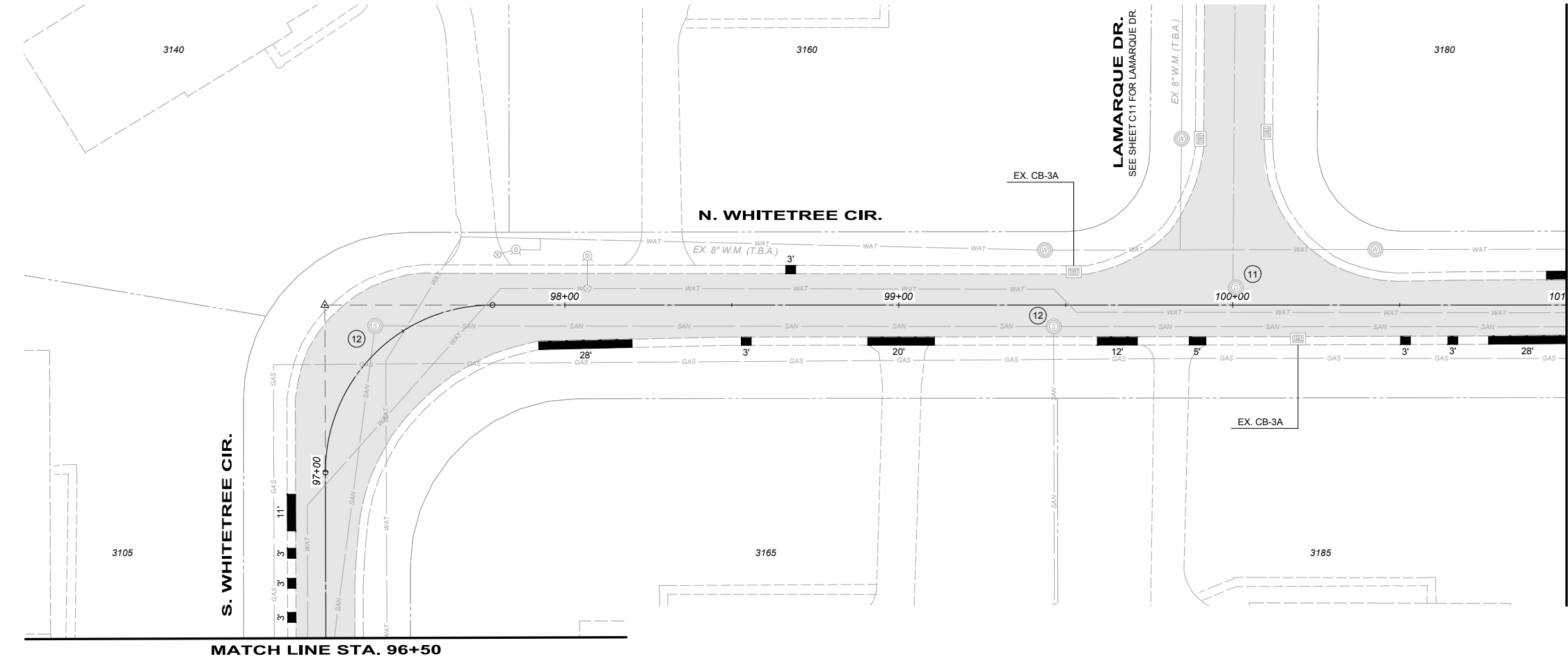
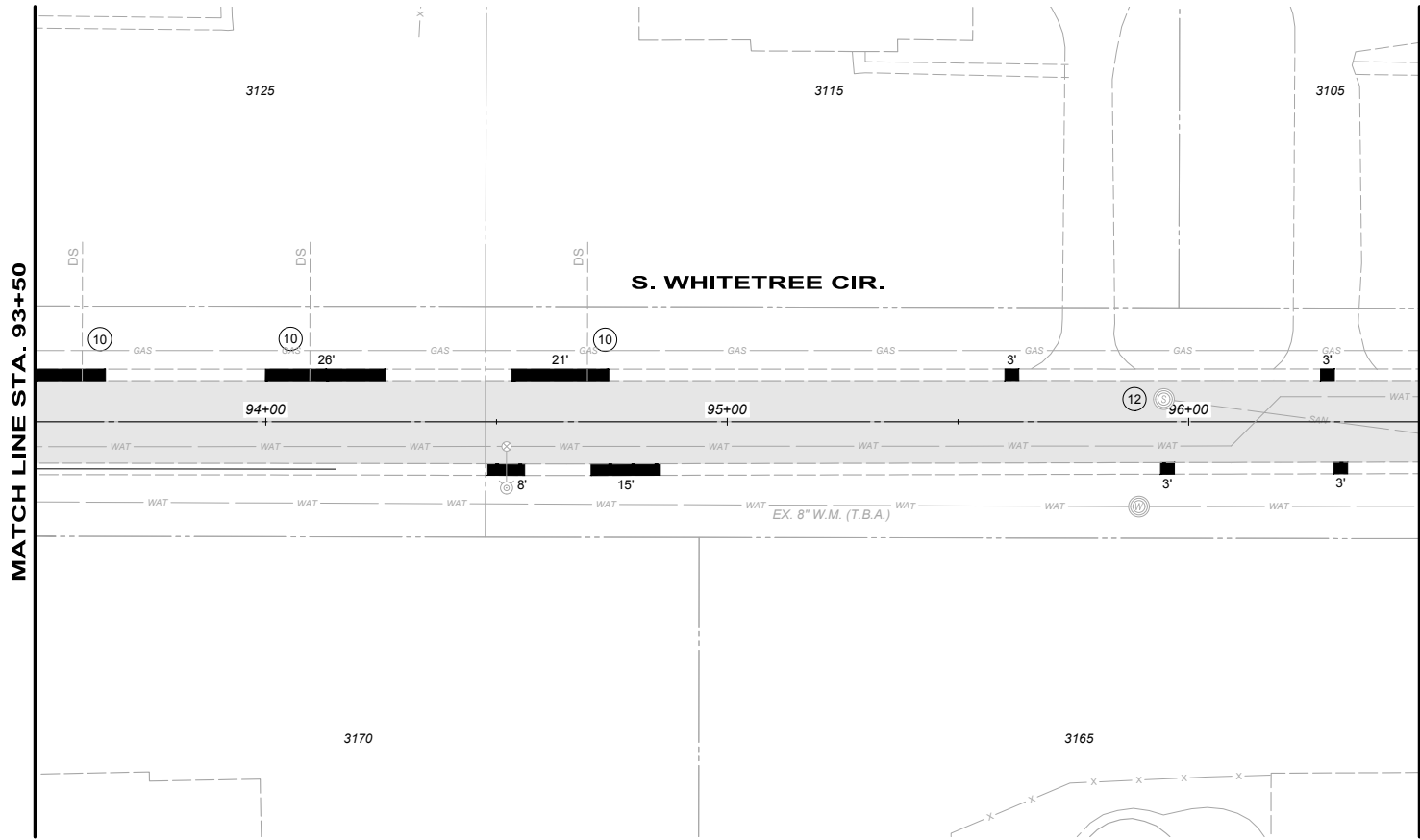


ISSUED FOR:	ISSUE DATE:	SCALE:	DESIGNED BY:	DRAWN BY:	CHECKED BY:
	MAY 2019	1" = 40'	KGOE	SIFRA	FTWE
NO	REVISION	DATE			

**2019 STREET PROGRAM**  
AMBERLEY VILLAGE  
HAMILTON COUNTY, OHIO

**S. WHITETREE CIRCLE**  
STA. 85+00 TO STA. 93+50

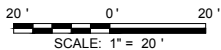
PROJECT NO. <b>190071</b>	
DISCIPLINE <b>CIVIL</b>	
SHEET NAME <b>C13</b>	
SHEET <b>13</b>	OF <b>16</b>



- LEGEND**
- ITEM 254 - PAVEMENT PLANING
  - ITEM 253 - FULL DEPTH PAVEMENT REPAIR (SEE NOTE 1)
  - ITEM 609 - ROLLED COMBINATION CURB AND GUTTER, REMOVAL AND REPLACEMENT (SEE NOTE 2)

- KEYNOTES**
- ITEM SPL - CONCRETE MASONRY, LOW PROFILE HEADWALL (SEE DETAIL)
  - ITEM 605 - 6" SCHEDULE 40 PVC, COLLECTOR LINE AND DOWNSPOUT CONNECTION, UNDER CURB
  - ITEM 605 - 6" SCHEDULE 40 PVC, COLLECTOR LINE AND DOWNSPOUT CONNECTION, BEHIND CURB
  - ITEM 611 - CATCH BASIN, NO. 3 RECONSTRUCTED TO GRADE, REBUILD TOP 18" USING PRECAST TOP
  - ITEM 611 - CATCH BASIN NO. 3, INSTALL NEW FRAME AND VANE GRATES
  - ITEM 611 - CATCH BASIN, NO. 3A RECONSTRUCTED TO GRADE, REBUILD TOP 18" USING PRECAST TOP
  - ITEM 611 - CATCH BASIN NO. 3A, INSTALL NEW FRAME AND VANE GRATES
  - ITEM 611 - INLET, S.G.I., INSTALL NEW FRAME AND VANE GRATES
  - ITEM 611 - CATCH BASIN, NO. 2-2B, INCLUDING REMOVAL OF EXISTING CATCH BASIN, MATCH EXISTING TOP OF GRATE AND INVERTS
  - ITEM 611 - DOWNSPOUT EXTENSION
  - ITEM 611 - STORM MANHOLE ADJUSTED TO GRADE
  - ITEM SPL - SANITARY MANHOLE ADJUSTED TO GRADE
  - ITEM 644 - STOP LINE, 24"
  - ITEM 611 - 12" CONDUIT, MATCH EXISTING SLOPE AND INVERTS

- NOTES**
- THE FINAL FULL DEPTH REPAIR AREAS WILL BE MARKED WHEN THE PLANING OPERATIONS HAVE BEEN COMPLETED.
  - THE FINAL CURB PLACEMENT LIMITS AND WORK LIMITS WILL BE MARKED PRIOR TO BEGINNING CONSTRUCTION.
  - ADJUSTMENTS TO VALVE BOXES, METERS OR OTHER ASSOCIATED GAS, ELECTRIC, TELEPHONE OR CABLE FACILITIES, IF NECESSARY, SHALL BE CONSIDERED INCIDENTAL TO THE CONTRACT AND SHALL BE COMPLETED PER UTILITY OWNER REQUIREMENTS.

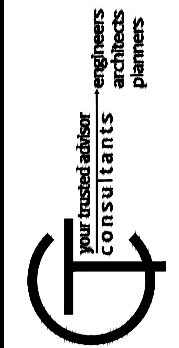


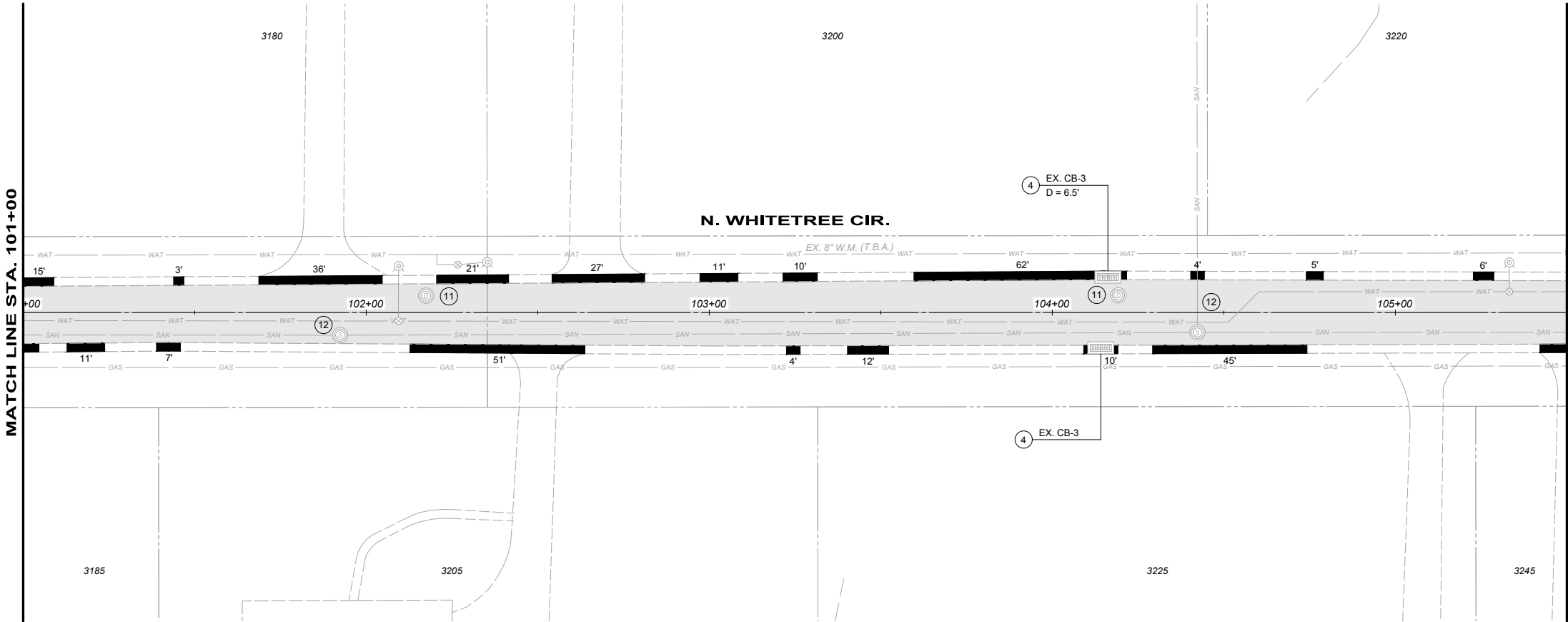
2019 STREET PROGRAM  
AMBERLEY VILLAGE  
HAMILTON COUNTY, OHIO

N. & S. WHITETREE CIRCLE  
STA. 93+50 TO STA. 101+00

PROJECT NO.	
190071	
DISCIPLINE	
CIVIL	
SHEET NAME	
C14	
SHEET	OF
14	16

ISSUED FOR:		REVISION		NO		DATE	
ISSUE DATE:		MAY 2019					
SCALE:		1" = 40'					
DESIGNED BY:		KGOE					
DRAWN BY:		SIFRA					
CHECKED BY:		FTWE					

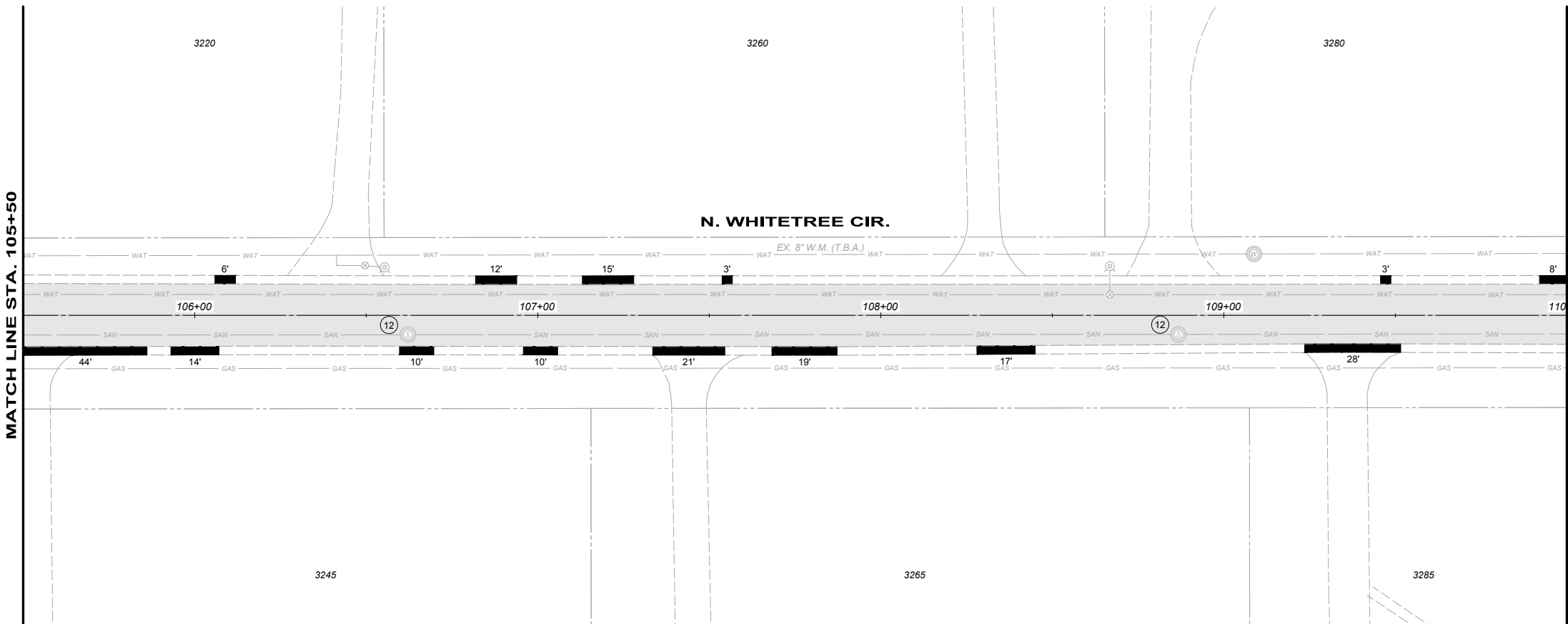
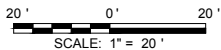




- LEGEND**
- ITEM 254 - PAVEMENT PLANING
  - ITEM 253 - FULL DEPTH PAVEMENT REPAIR (SEE NOTE 1)
  - ITEM 609 - ROLLED COMBINATION CURB AND GUTTER, REMOVAL AND REPLACEMENT (SEE NOTE 2)

- KEYNOTES**
- ITEM SPL - CONCRETE MASONRY, LOW PROFILE HEADWALL (SEE DETAIL)
  - ITEM 605 - 6" SCHEDULE 40 PVC, COLLECTOR LINE AND DOWNSPOUT CONNECTION, UNDER CURB
  - ITEM 605 - 6" SCHEDULE 40 PVC, COLLECTOR LINE AND DOWNSPOUT CONNECTION, BEHIND CURB
  - ITEM 611 - CATCH BASIN, NO. 3 RECONSTRUCTED TO GRADE, REBUILD TOP 18" USING PRECAST TOP
  - ITEM 611 - CATCH BASIN NO. 3, INSTALL NEW FRAME AND VANE GRATES
  - ITEM 611 - CATCH BASIN, NO. 3A RECONSTRUCTED TO GRADE, REBUILD TOP 18" USING PRECAST TOP
  - ITEM 611 - CATCH BASIN NO. 3A, INSTALL NEW FRAME AND VANE GRATES
  - ITEM 611 - INLET, S.G.I., INSTALL NEW FRAME AND VANE GRATES
  - ITEM 611 - CATCH BASIN, NO. 2-2B, INCLUDING REMOVAL OF EXISTING CATCH BASIN, MATCH EXISTING TOP OF GRATE AND INVERTS
  - ITEM 611 - DOWNSPOUT EXTENSION
  - ITEM 611 - STORM MANHOLE ADJUSTED TO GRADE
  - ITEM SPL - SANITARY MANHOLE ADJUSTED TO GRADE
  - ITEM 644 - STOP LINE, 24"
  - ITEM 611 - 12" CONDUIT, MATCH EXISTING SLOPE AND INVERTS

- NOTES**
- THE FINAL FULL DEPTH REPAIR AREAS WILL BE MARKED WHEN THE PLANING OPERATIONS HAVE BEEN COMPLETED.
  - THE FINAL CURB PLACEMENT LIMITS AND WORK LIMITS WILL BE MARKED PRIOR TO BEGINNING CONSTRUCTION.
  - ADJUSTMENTS TO VALVE BOXES, METERS OR OTHER ASSOCIATED GAS, ELECTRIC, TELEPHONE OR CABLE FACILITIES, IF NECESSARY, SHALL BE CONSIDERED INCIDENTAL TO THE CONTRACT AND SHALL BE COMPLETED PER UTILITY OWNER REQUIREMENTS.

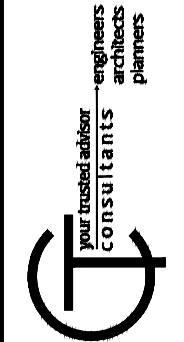


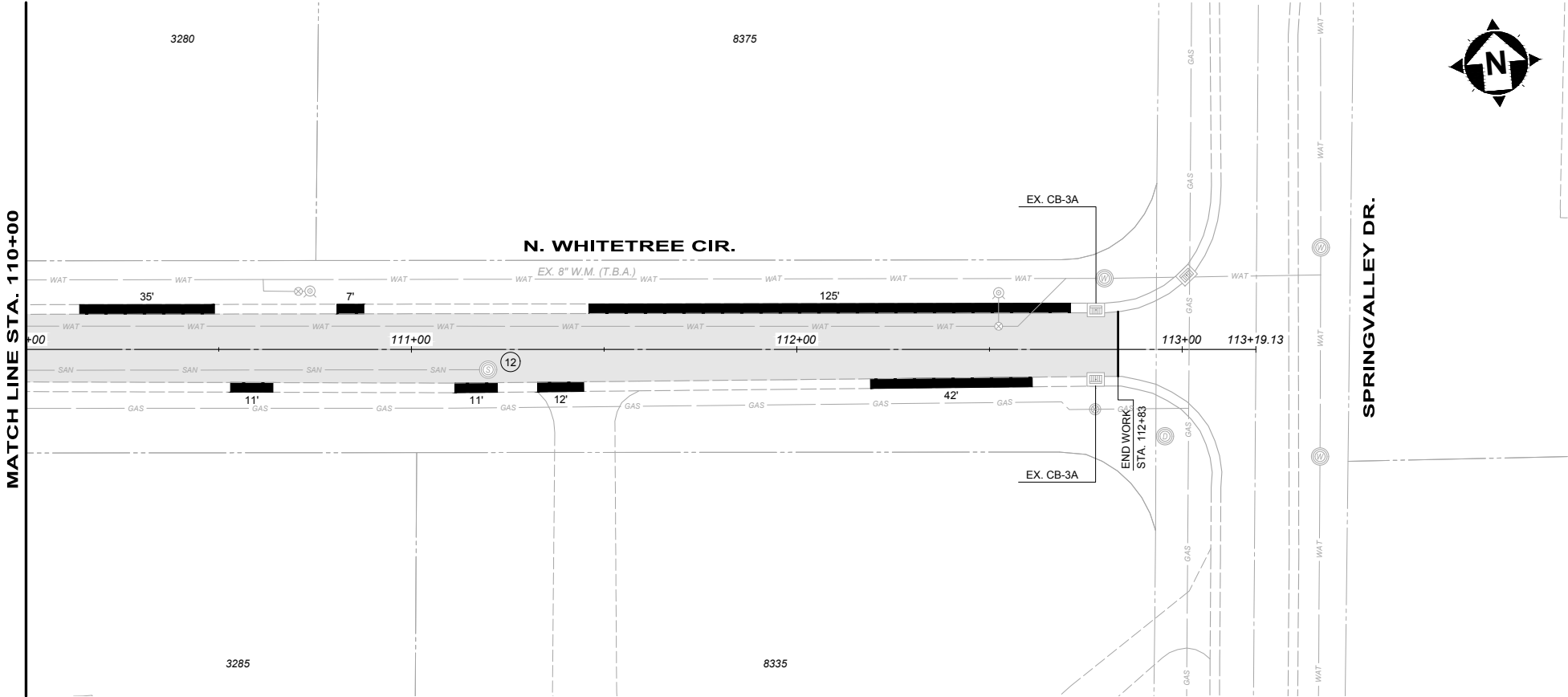
2019 STREET PROGRAM  
AMBERLEY VILLAGE  
HAMILTON COUNTY, OHIO

N. WHITETREE CIRCLE  
STA. 101+00 TO STA. 110+00

PROJECT NO. <b>190071</b>	
DISCIPLINE <b>CIVIL</b>	
SHEET NAME <b>C15</b>	
SHEET <b>15</b>	OF <b>16</b>

ISSUED FOR:	ISSUE DATE:	SCALE:	DESIGNED BY:	DRAWN BY:	CHECKED BY:
	MAY 2019	1" = 40'	KGOE	SIFRA	FTWE
NO	REVISION	DATE			





LEGEND

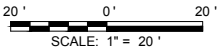
- ITEM 254 - PAVEMENT PLANING
- ITEM 253 - FULL DEPTH PAVEMENT REPAIR (SEE NOTE 1)
- ITEM 609 - ROLLED COMBINATION CURB AND GUTTER, REMOVAL AND REPLACEMENT (SEE NOTE 2)

KEYNOTES

- 1) ITEM SPL - CONCRETE MASONRY, LOW PROFILE HEADWALL (SEE DETAIL)
- 2) ITEM 605 - 6" SCHEDULE 40 PVC, COLLECTOR LINE AND DOWNSPOUT CONNECTION, UNDER CURB
- 3) ITEM 605 - 6" SCHEDULE 40 PVC, COLLECTOR LINE AND DOWNSPOUT CONNECTION, BEHIND CURB
- 4) ITEM 611 - CATCH BASIN, NO. 3 RECONSTRUCTED TO GRADE, REBUILD TOP 18" USING PRECAST TOP
- 5) ITEM 611 - CATCH BASIN NO. 3A, INSTALL NEW FRAME AND VANE GRATES
- 6) ITEM 611 - CATCH BASIN, NO. 3A RECONSTRUCTED TO GRADE, REBUILD TOP 18" USING PRECAST TOP
- 7) ITEM 611 - CATCH BASIN NO. 3A, INSTALL NEW FRAME AND VANE GRATES
- 8) ITEM 611 - INLET, S.G.I., INSTALL NEW FRAME AND VANE GRATES
- 9) ITEM 611 - CATCH BASIN, NO. 2-2B, INCLUDING REMOVAL OF EXISTING CATCH BASIN, MATCH EXISTING TOP OF GRATE AND INVERTS
- 10) ITEM 611 - DOWNSPOUT EXTENSION
- 11) ITEM 611 - STORM MANHOLE ADJUSTED TO GRADE
- 12) ITEM SPL - SANITARY MANHOLE ADJUSTED TO GRADE
- 13) ITEM 644 - STOP LINE, 24"
- 14) ITEM 611 - 12" CONDUIT, MATCH EXISTING SLOPE AND INVERTS

NOTES

- 1.) THE FINAL FULL DEPTH REPAIR AREAS WILL BE MARKED WHEN THE PLANING OPERATIONS HAVE BEEN COMPLETED.
- 2.) THE FINAL CURB PLACEMENT LIMITS AND WORK LIMITS WILL BE MARKED PRIOR TO BEGINNING CONSTRUCTION.
- 3.) ADJUSTMENTS TO VALVE BOXES, METERS OR OTHER ASSOCIATED GAS, ELECTRIC, TELEPHONE OR CABLE FACILITIES, IF NECESSARY, SHALL BE CONSIDERED INCIDENTAL TO THE CONTRACT AND SHALL BE COMPLETED PER UTILITY OWNER REQUIREMENTS.



2019 STREET PROGRAM  
AMBERLEY VILLAGE  
HAMILTON COUNTY, OHIO

N. WHITETREE CIRCLE  
STA. 110+00 TO END WORK

ISSUED FOR:	NO	REVISION	DATE
ISSUE DATE:			
SCALE:			
DESIGNED BY:			
DRAWN BY:			
CHECKED BY:			

PROJECT NO.	190071
DISCIPLINE	CIVIL
SHEET NAME	C16
SHEET	OF
16	16

