

PLUMBING FIXTURE AND EQUIPMENT SCHEDULE

| MARK | FIXTURE/EQUIPMENT | MANUFACTURER AND MODEL NUMBER |
|-------|--|---|
| WC-1 | WATER CLOSET FLUSH VALVE ADA | FIXTURE: FLOOR MOUNTED, FLUSH VALVE, WHITE VITREOUS CHINA, ELONGATED BOWL, 1-1/2 INCH TOP SPUD, SIPHON JET ACTION, 1.6 GALLONS PER FLUSH, 16-1/2 INCH BOWL HEIGHT, AMERICAN STANDARD "MADERA" 2857.016 WITH MANUAL FLUSH VALVE, 1.6 GPF OR APPROVED EQUAL. SEAL: WHITE, HEAVY DUTY COMMERCIAL GRADE, OPEN FRONT, SELF-SUSTAINING CHECK HINGES WITH STAINLESS STEEL POSTS BY CHURCH MODEL 4500C OR APPROVED EQUAL. |
| L-1 | LAVATORY WALL-HUNG ADA | FIXTURE: 20 INCH x 18 INCH WALL HUNG LAVATORY, 4 INCH CENTERS, AMERICAN STANDARD 0355.012 "LUCERNE" OR APPROVED EQUAL. FAUCET: SINGLE CONTROL LAVATORY FAUCET ON 4 INCH CENTERS, WASHER-LESS CERAMIC DISC VALVE CARTRIDGE, METAL LEVER HANDLE, 0.5 GPM VANDAL PROOF, NON-AERATING SPRAY, AMERICAN STANDARD MODEL T385.050 @ 0.5 GPM OR APPROVED EQUAL. CARRIER: ADJUSTABLE CARRIER WITH STEEL UPRIGHTS, ARMS FOR CONCEALED MOUNTING, BLOCK FEET FOR SECURING TO FLOOR AND FRAMING. WADE W-520 OR ZURN. SUPPLIES: FURNISH CHROME PLATED RIGID OR FLEXIBLE SUPPLIES WITH LOOSE KEY STOPS, REDUCERS, AND ESCUTCHEONS. INSULATED FOR ADA COMPLIANCE. DRAIN: STAINLESS STEEL NON-REMOVABLE STRAINER WITH 1-1/4 INCH TAILPIECE. CHICAGO FAUCET NO. 321. TRAP: CHROME PLATED CAST BRASS ADJUSTABLE "P" TRAP WITH CLEANOUT AND IT GAUGE WASTE TO WALL WITH ESCUTCHEON. INSULATED AND OFFSET TO MEET ADA COMPLIANCE. PROVIDE PLUMBEX MODEL X414 TRAP COVER AND MODEL X4333 PRO EXTREME TRAP WRAP. |
| EWG-1 | ELECTRIC WATER COOLER ADA | FIXTURE: SPLIT LEVEL, DOUBLE UNIT, WALL MOUNTED, BARRIER FREE, ELECTRIC WATER COOLER HAVING MINIMUM CAPACITY OF 8.0 GPH OF 50 DEGREE F WATER AT 80 DEGREE F INLET WATER AND 90 DEGREE F ROOM TEMPERATURE. FRONT PUSH PAD. SHIELDED ONE-PIECE CHROME PLATED BUBBLER. FURNISH BRACKET FOR WALL MOUNTING AND FLEXIBLE POWER CABLE WITH THREE PRONGED GROUNDED PLUG. FURNISH APRON FOR UPPER UNIT. REFRIGERANT: R-134A. FINISH: STAINLESS STEEL TOP. CABINET FINISH AS SELECTED BY ARCHITECT. MANUFACTURER: OASIS MODEL P68ACSL OR SIMILAR BY ELKAY. ROUGH-IN: PROVIDE STOP VALVE, CAST BRASS P-TRAP, AND IT GAUGE TAILPIECE. MOUNTING HEIGHT: TO ACCOMMODATE WHEELCHAIR USERS. |
| MB-1 | MOP BASIN | FIXTURE: MUSTEE 63M, 24 X 24 X 10 INCH HIGH MOLDED STONE, FLOOR MOUNTED, STAINLESS STEEL STRAINER. FAUCET: MUSTEE MODEL 63.600A FAUCET, ROUGH CHROME FINISH, THREADED SPOUT WITH BUCKET HOOK, VACUUM BREAKER, HOSE OUTLET SPOUT END, WALL BRACE, CAST BRASS INDEXED LEVER HANDLES, AND STOPS IN SHANKS OR EQUAL. ACCESSORIES: 48 INCH LONG HEAVY DUTY, 5/8 INCH DIAMETER HOSE AND HOSE CLIP, STAINLESS STEEL HOSE BRACKET, AND STAINLESS STEEL MOP HANGER WITH 3 GRIPS. |
| FD-1 | FLOOR DRAIN | FLOOR DRAIN: PVC ADJUSTABLE ROUND NICKEL BRONZE. SIOUX CHIEF 832-36PDR WITH 6 INCH NB TOP OR APPROVED EQUAL. |
| FD-2 | FLOOR DRAIN WITH FUNNEL | FLOOR DRAIN WITH FUNNEL: PVC ADJUSTABLE ROUND NICKEL BRONZE. SIOUX CHIEF 832-36PDR WITH 6 INCH NB TOP OR APPROVED EQUAL. PROVIDE CONDENSATE FUNNEL 863 SERIES MODEL FND WITH FASTENING SCREWS. |
| TP-1 | TRAP SEALER | SURE SEAL MODEL 563004V & 564004V INLINE FLOOR DRAIN TRAP SEAL. COMMERCIAL GRADE UV AND OZONE RESISTANT ABS PLASTIC HOUSING WITH PROPRIETARY EPDM RUBBER DIAPHRAGM AND SOFT RUBBER SEALING GASKET. FLOOR RATINGS ASSE - 10T2 AF-6M. |
| FCO | FLOOR CLEANOUT | FLOOR CLEAN-OUT: ADJUSTABLE ON-GRADE CLEAN-OUT, SCORLATED CLEAN-OUT COVER, PVC WITH ROUND NICKEL BRONZE TOP. SIOUX CHIEF 834 SERIES |
| ECO | EXTERIOR CLEANOUT | CAST IRON ACCESS HOUSING, PUSH-JOINT GASKET, CAST IRON COVER WITH ADJUSTABLE ANCHOR FLANGE AND EXTRA HEAVY SECURED NON-SKID CAST IRON COVER WITH VANDAL PROOF SCREWS. SIOUX CHIEF 851 SERIES OR SIMILAR BY MIFAB OR ZURN. FULL SIZE OF PIPE AND NOT LESS THAN 4 INCHES FOR LARGER SIZES. |
| WH-1 | WALL HYDRANT NON-FREEZE | FITTING: ZURN Z1321-CXL ECOLOTROL WALL HYDRANT. EXPOSED. NON-FREEZE, ANTI-SIPHON WITH AUTOMATIC DRAINING, WITH 3/4 INCH HOSE CONNECTION OR APPROVED EQUAL. |
| | WATER HAMMER ARRESTORS | PERMANENTLY SEALED BELLOWS OR EXPANDING CHAMBER TYPE DEVICE FOR CONTROL OF WATER HAMMER, P.D.I. APPROVED. SMITH HYDROTROL OR SIMILAR BY JOSAM, MIFAB, WADE, ZURN, OR EQUAL. |
| | POINT OF USE THERMOSTATIC MIXING VALVE | WATER TEMPERATURE REGULATING VALVE, LEAD FREE BRONZE BODY, THREADED CONNECTIONS. LOW TEMPERATURE, DUAL ACTION, INTERCHANGEABLE THERMOSTAT, INTEGRAL FILTER WASHERS AND CHECK VALVES. ASSE 10T0 LISTED. ADJUSTABLE FROM 80 DEGREES F TO 120 DEGREES F WITH LOCKING FEATURE. SET OUTLET TEMPERATURE AT 110 DEGREES F. MAXIMUM PRESSURE 150 PSI. MATTS SERIES LFU66-B OR AS APPROVED. |

NOTES:

1 - PLUMBING FIXTURES AND EQUIPMENT ARE TO BE PROVIDED BY PLUMBING CONTRACTOR, UNLESS OTHERWISE NOTED.

WATER HEATER SCHEDULE

| MARK | MANUFACTURER | MODEL | FUEL | KW INPUT | STORAGE CAPACITY (gallons) | FINAL TEMPERATURE (degrees F) | RECOVERY GPH | TEMPERATURE RISE (degrees F) | VOLTAGE | EXPANSION TANK | REMARKS |
|-------|--------------|-----------------|----------|----------|----------------------------|-------------------------------|--------------|------------------------------|----------|---------------------|------------------------------------|
| EWH-1 | RHEEM | PROEIO 1 RH POU | ELECTRIC | 2.0 | 10 | 120 | 9 | 90 | 120V-1PH | AMTROL MODEL ST - 5 | NON-SIMULTANEOUS ELEMENT OPERATION |

FIXTURE CONNECTION SCHEDULE

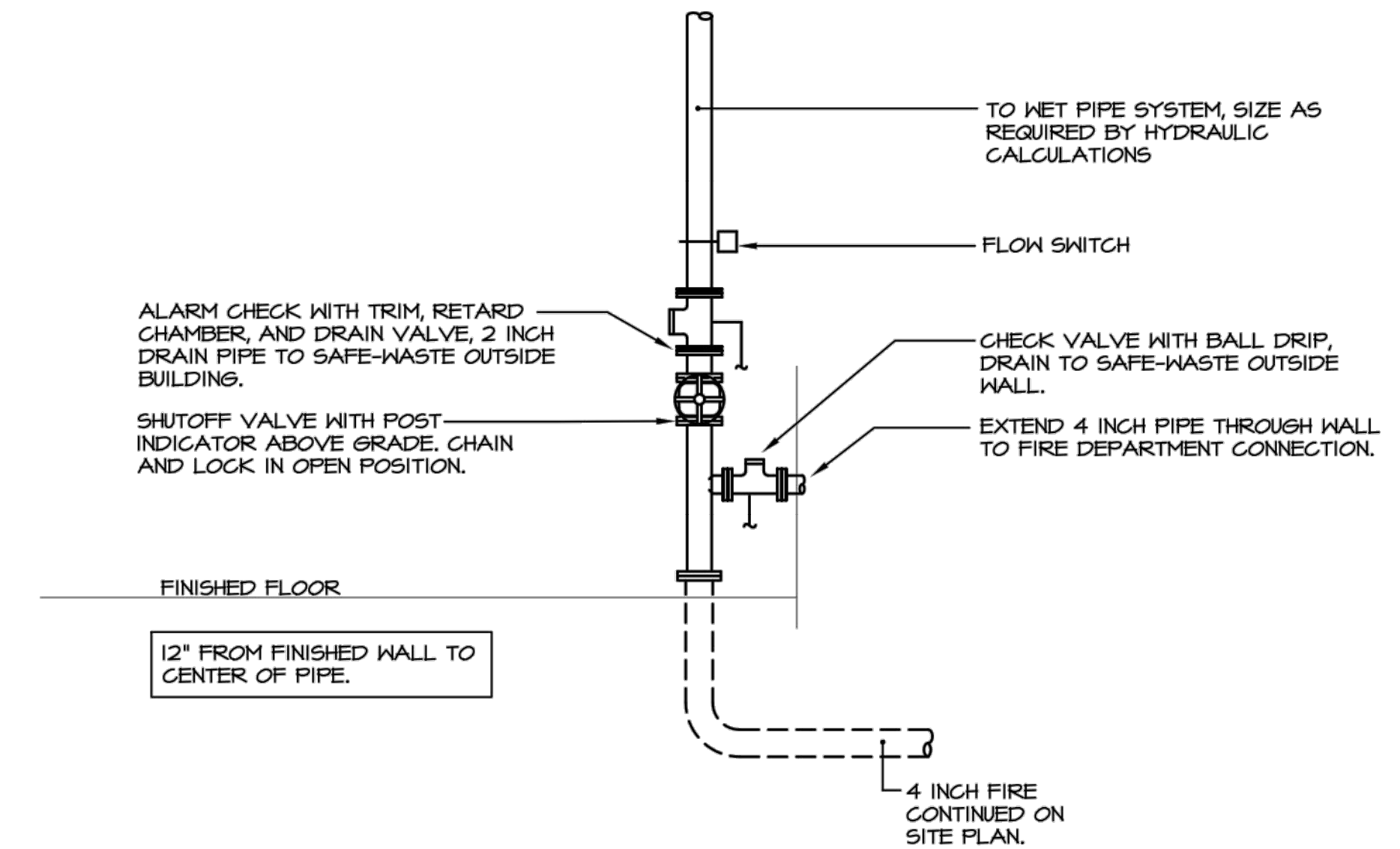
| ITEM | DESCRIPTION | CONNECTION | | | |
|------|----------------------------|------------|------|--------|--------|
| | | HW | CW | WASTE | VENT |
| WC | WATER CLOSET (FLUSH VALVE) | — | 1" | 4" | 2" |
| L | LAVATORY | 1/2" | 1/2" | 1-1/4" | 1-1/4" |
| MR | MOP RECEPTOR | 1/2" | 1/2" | 3" | 1-1/2" |
| EWG | ELECTRIC WATER COOLER | — | 1/2" | 1-1/4" | 1-1/4" |

FIRESTOP REFERENCE SCHEDULE

| PENETRATION | CONCRETE OR MASONARY | | GYPSUM BOARD/ FRAME | | STI PRODUCT TYPE |
|---------------|----------------------|-----------------|---------------------|-----------------|------------------|
| | UL SYSTEM FLOORS | UL SYSTEM WALLS | UL SYSTEM FLOORS | UL SYSTEM WALLS | |
| METALLIC PIPE | CAJ1074 | WJ1055 | FC1010 | WJ1044 | SS5100 SEALANT |
| | CAJ1213 | CAJ1213 | | WJ1088 | LG150 SEALANT |
| | CAJ1198 | CAJ1198 | | WJ1062 | PEN300 SEALANT |
| PVC PIPE | CAJ1231 | CAJ2018 | FC2032 | WJ2043 | SS5100 SEALANT |

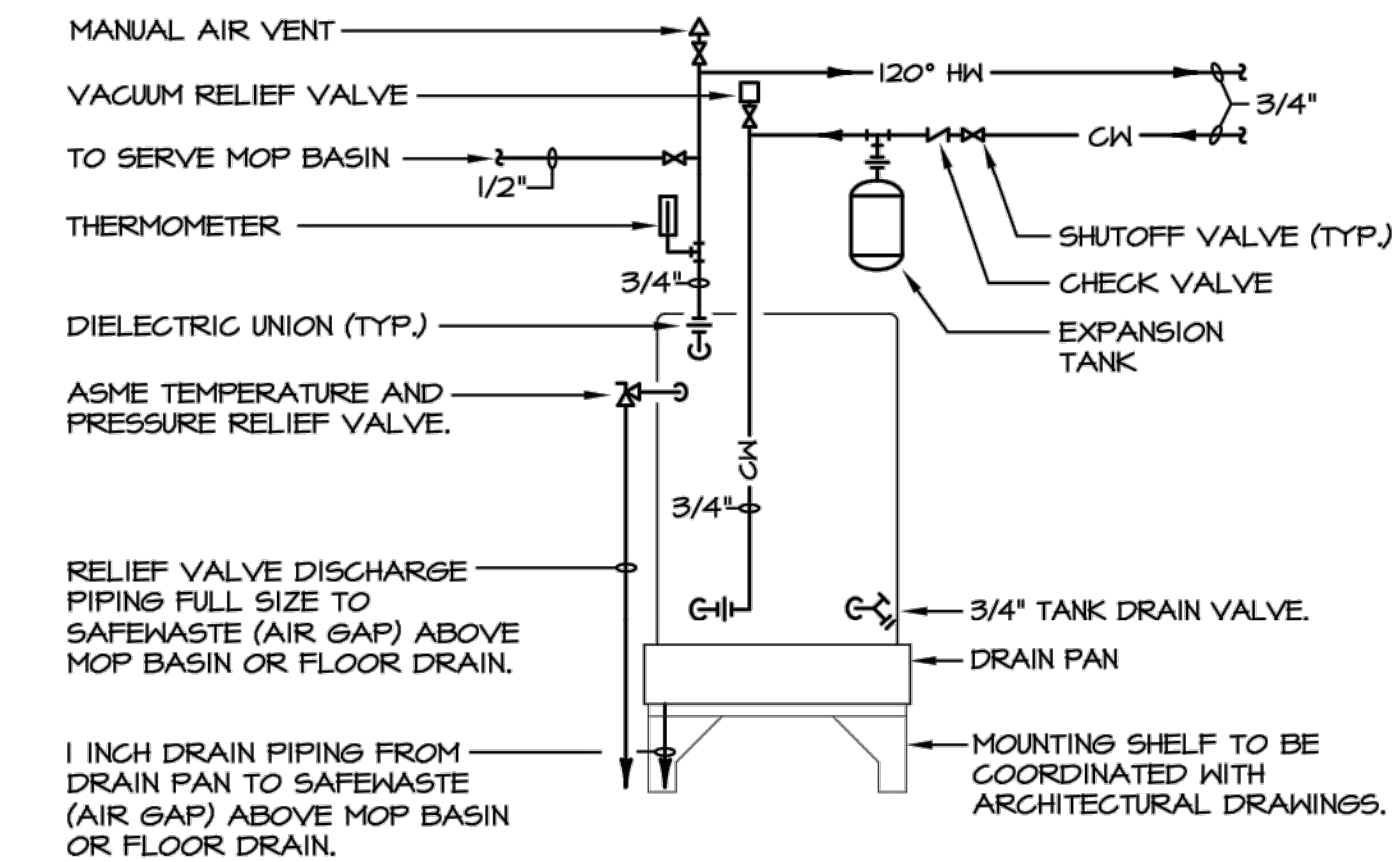
NOTES:

- 1 - REFER TO SPECIFICATIONS FOR APPROVED MANUFACTURERS (STI IS LISTED IN SCHEDULE).
- 2 - REFER TO THE MOST RECENT UL SYSTEM PUBLICATIONS FOR ADDITIONAL DETAILS.
- 3 - CONFIRM ALL REQUIREMENTS WITH THE LOCAL FIRE CODE OFFICIALS.



FIRE PROTECTION RISER DIAGRAM
NO SCALE

NOTE:
ALL PIPING, VALVES, AND DEVICES ARE PROVIDED BY THE FIRE PROTECTION CONTRACTOR. PROVIDE AS REQUIRED BY NFPA 13 AND LOCAL AUTHORITY HAVING JURISDICTION.



ELECTRIC WATER HEATER DETAIL
NO SCALE



| DATE | REVISION | NO | CD | ISSUED FOR: | ISSUE DATE: | SCALE: | DESIGNED BY: | DRAWN BY: | CHECKED BY: |
|------|----------|----|----------|-------------|-------------|-----------|--------------|-----------|-------------|
| | | | AS NOTED | 4/10/20 | | PJF / GMS | PJF | PJF | PJF |

LAKETRAN WICKLIFFE PARK-N-RIDE LOT
29610 LAKELAND BLVD., WICKLIFFE, OH 44092

PLUMBING SCHEDULES AND DETAILS

| | | |
|-------------|-----------|-----------------|
| PROJECT NO. | | 190065 |
| DISCIPLINE | | PLUMBING |
| SHEET NAME | | P-2 |
| SHEET | OF | |
| 48 | 49 | |



33851 Curtis Blvd., 216
Eastlake, Ohio 44095
t 440.953.8760
f 440.953.1289
www.tecinc1.com

cleveland | columbus | pittsburgh