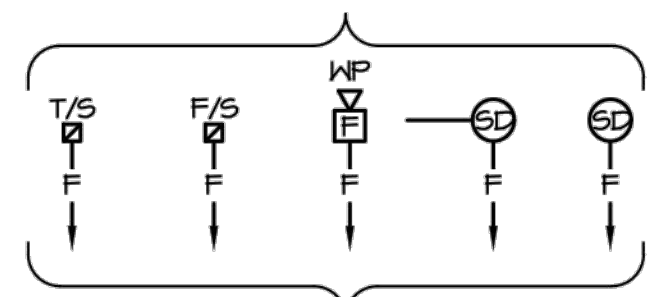


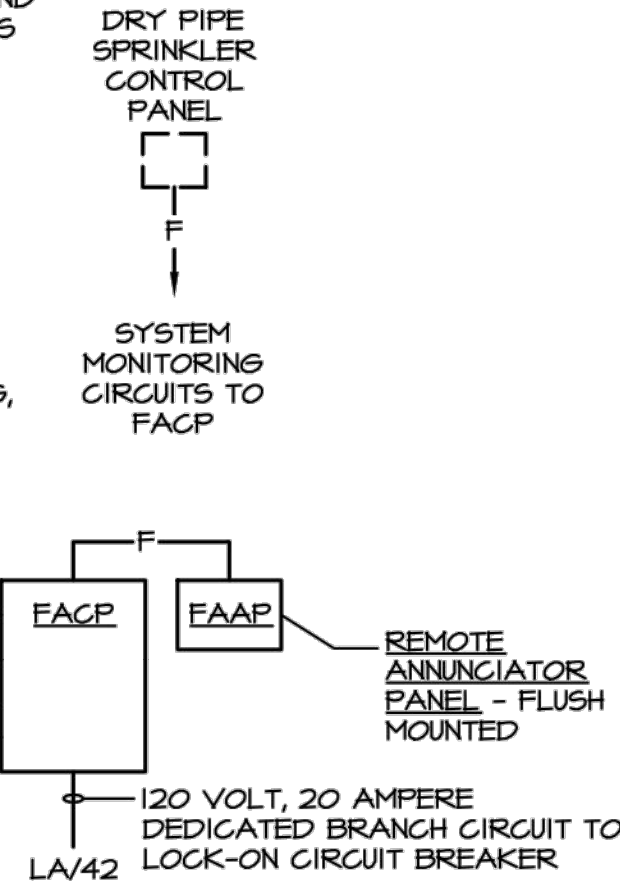
TYPICAL DEVICE DESIGNATIONS - REFER TO FLOOR PLANS FOR DEVICE TYPES AND LOCATIONS, AND REFER TO SYMBOL LEGEND FOR DESCRIPTIONS



CONTROL WIRING IN CONDUIT TO AIR HANDLING UNIT START CIRCUITS - FOR SHUTDOWN

TO SECURE DOORS FOR RELEASE CONTROL PANEL (SURFACE MOUNTED)

2-PAIR TELEPHONE CABLE, 1/2\"/>

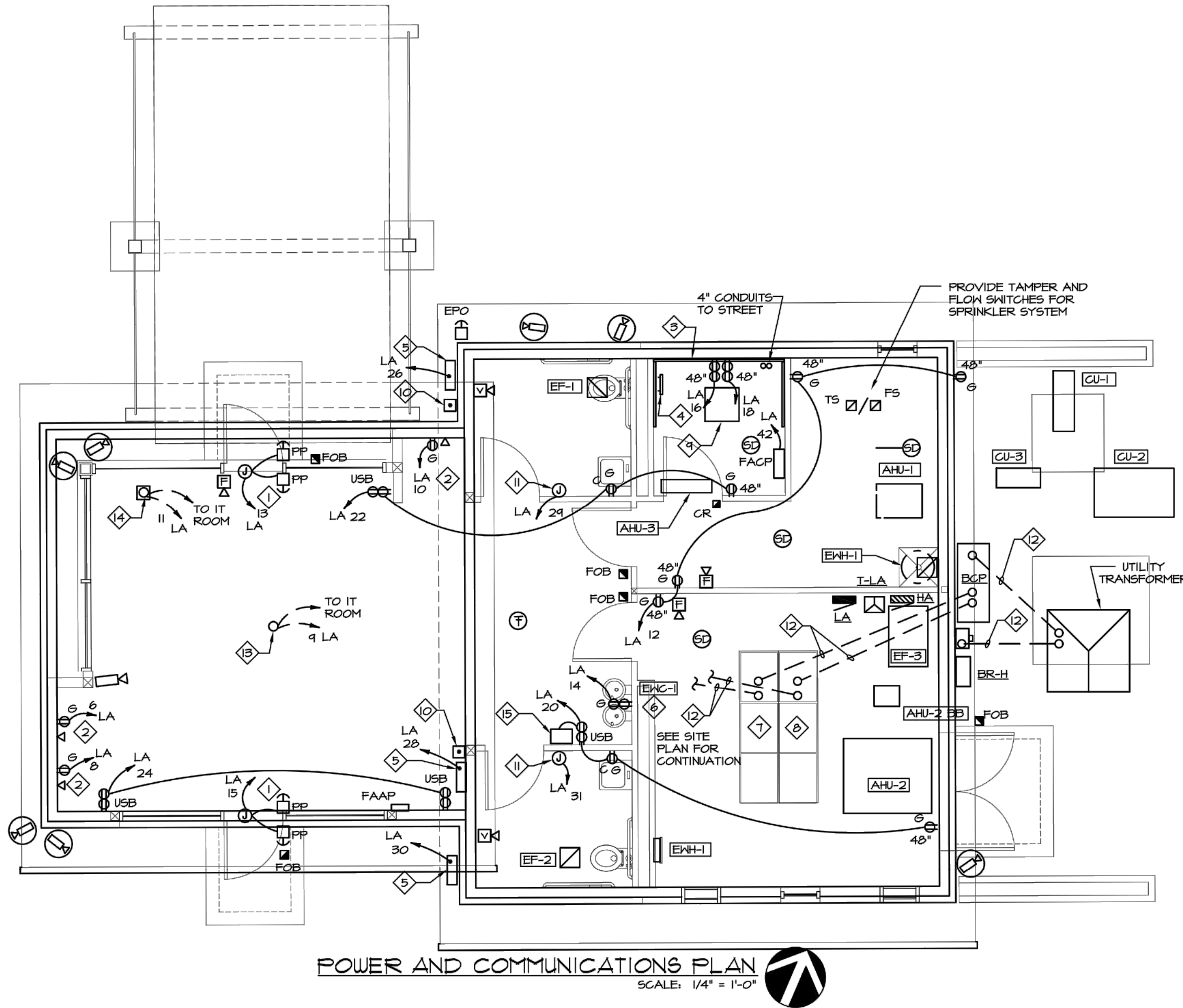


### FIRE ALARM SYSTEM BLOCK DIAGRAM

- 1) ALL 24VDC FIRE ALARM CABLE SHALL BE INSTALLED IN CONDUIT, OR SHALL BE FIRE ALARM/CONTROL TYPE MC CABLE (RED SHEATH). AT THE CONTRACTOR'S OPTION, FLEMING RATED CABLE MAY BE USED WITHOUT CONDUIT ONLY
- 2) ABOVE ACCESSIBLE, LAY-IN CEILINGS, AND IN EXPOSED STRUCTURE AREAS ABOVE 12'-0" A.F.F.
- 3) THE SYSTEM SUPPLIER SHALL DETERMINE THE SIZE, TYPE AND QUANTITY OF 24VDC CABLES FOR THE SYSTEM, AND SHALL FURNISH INSTALLATION FLOOR PLANS FOR REVIEW AND APPROVAL.
- 4) APPROVAL.

VERIFY QUANTITY AND LOCATION OF SPRINKLER SYSTEM TAMPER AND FLOW SWITCHES WITH THE SPRINKLER SYSTEM CONTRACTOR.

REFER TO THE SPECIFICATIONS FOR ADDITIONAL SYSTEM REQUIREMENTS. ALL POWER SUPPLIES AND BATTERIES SHALL HAVE A 25% SPARE (MINIMUM) CAPACITY FOR FUTURE DEVICES.



### POWER AND COMMUNICATIONS PLAN

SCALE: 1/4" = 1'-0"

### MECHANICAL EQUIPMENT WIRING SCHEDULE

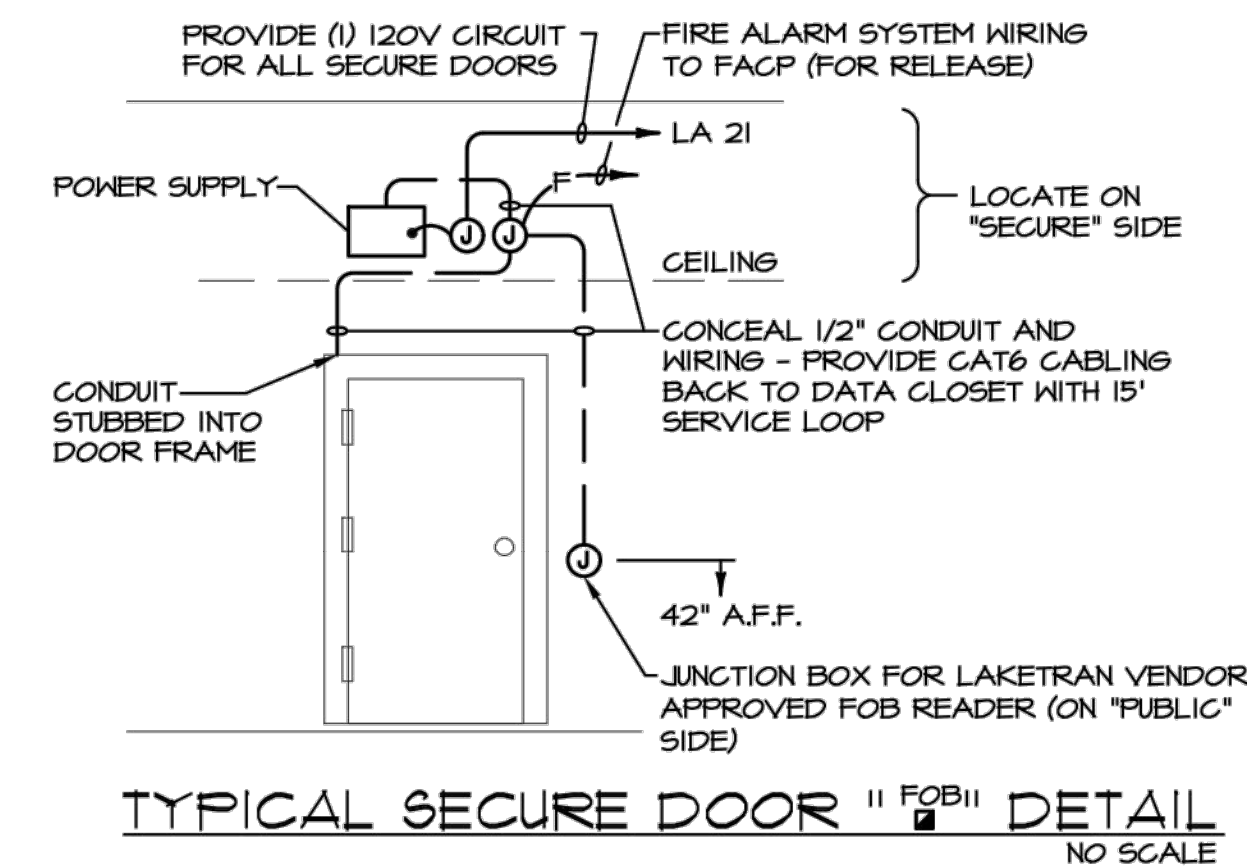
ITEM NO.	EQUIPMENT	HP	KW	FLA	VOLTS	Ø	CONNECTION BY EC	PANEL / CKT. NO.	CIRC BKR AMPS POLES	WIRING AND CONDUIT	NOTES
AHU-1 CU-1	SPLIT SYSTEM #1	-	17.5	-	480	3	②	HA / 8, 10, 12	25 3	3-10 AWG & 1-10 AWG GND - 3/4" C.	
AHU-2 CU-2	SPLIT SYSTEM #2	-	2.3	-	208	1	②	LA / 2,4	20 2	2-12 AWG & 1-12 AWG GND - 3/4" C.	
AHU-2 BB	AHU-2 BRANCH BOX	-	0.1	-	208	1	③	LA / 1,3	15 2	2-12 AWG & 1-12 AWG GND - 3/4" C.	
AHU-3 CU-3	SPLIT SYSTEM #3	-	2.3	-	208	1	②	LA / 17,19	30 2	2-10 AWG & 1-10 AWG GND - 3/4" C.	①
EF-1	EXHAUST FAN #1	FRAC	0.04	-	120	1	DC ⑤	LA / 7 ④	20 1	2-12 AWG & 1-12 AWG GND - 3/4" C.	
EF-2	EXHAUST FAN #2	FRAC	0.04	-	120	1	DC ⑤	LA / 7 ④	20 1	2-12 AWG & 1-12 AWG GND - 3/4" C.	
EF-3	EXHAUST FAN #3	2	-	-	480	3	□ 30/3	HA / 14, 16, 18	15 3	3-12 AWG & 1-12 AWG GND - 3/4" C.	⑥
HTR-1	ELECTRIC HEATER	-	4.8	-	208	1	□ 30AS	LA / 32, 34	30 2	2-10 AWG & 1-10 AWG GND - 3/4" C.	
EWH-1	ELECTRIC WATER HEATER	-	2.0	-	120	1	□ 30AS	LA / 5	25 1	2-10 AWG & 1-10 AWG GND - 3/4" C.	

### SCHEDULE NOTES

1. DUCT SMOKE DETECTOR MOUNTED BY MECHANICAL CONTRACTOR, FURNISHED AND WIRED BY ELECTRICAL CONTRACTOR.
2. EQUIPMENT HAS A SINGLE POINT CONNECTION. SEE WIRING DIAGRAM.
3. EQUIPMENT HAS A FACTORY DISCONNECT SWITCH.
4. EQUIPMENT SHARES CIRCUIT WITH OTHER EQUIPMENT.
5. PROVIDE AN INTERLOCKING RELAY TO CONTROL 120V EXHAUST FAN WITH 277V LIGHTS THAT SERVE THE SPACE.
6. FAN TO INTERLOCK WITH LOUVER IN CHARGING ROOM.

### PLAN NOTES

1. NEW MOTORIZED DOORS WITH PUSH PAD CONTROLS - 120 VOLT, 1 PHASE. E.C. TO INSTALL ALL POWER AND CONTROL WIRING AND MOUNT PUSH PAD CONTROL STATIONS. ALL CONDUIT AND WIRING MUST BE CONCEALED. FIELD VERIFY ROUTING AND PUSH PAD LOCATIONS WITH OWNER/ARCHITECT PRIOR TO ROUGH-IN.
2. VENDING MACHINE. PROVIDE READILY ACCESSIBLE GFCI DEVICE AS REQUIRED BY CODE.
3. E.C. TO PROVIDE 8x8x4\"/>



### TYPICAL SECURE DOOR "FOB" DETAIL

NO SCALE

NOTE: VERIFY ALL JUNCTION BOXES, CONDUITS, AND POWER REQUIREMENTS WITH LAKETRAN SECURITY VENDOR BEFORE ROUGH-IN. KEY FOB READERS AND SECURE DOOR EQUIPMENT FURNISHED AND PROGRAMMED BY LAKETRAN VENDOR, INSTALLED AND WIRED BY E.C.

LAKETRAN WICKLIFFE PARK-RIDE LOT  
29610 LAKELAND BLVD., WICKLIFFE, OH 44092

### ELECTRICAL POWER PLAN

PROJECT NO.	190065
DISCIPLINE	ELECTRICAL
SHEET NAME	E-2
SHEET	40
OF	49



33851 Curtis Blvd., 216  
Eastlake, Ohio 44095  
t 440.953.8760  
f 440.953.1289  
www.tecinc1.com

cleveland | columbus | pittsburgh