

CONTRACTOR RESPONSIBLE FOR ALL SECURITY

GENERAL NOTES:

1. CONTRACTOR TO FIELD VERIFY ALL DIMENSIONS AND EXISTING CONDITIONS BEFORE SUBMITTING A BID PROPOSAL. DELETIONS FROM DRAWINGS WILL NOT BE ACCEPTED AS JUST CAUSE FOR CHANGING THE CONTRACT COST. DRAWINGS ARE INTENDED TO SHOW AREAS OF WORK AND DESIGN INTENT ONLY.
2. CONTRACTOR IS RESPONSIBLE FOR ALL SECURITY AND WEATHER-PROOFING RELATED ITEMS DURING CONSTRUCTION. INTENDED MATERIALS AND COURT SYSTEM MUST BE APPROVED BY ARCHITECT. ANY DAMAGE TO EXISTING STRUCTURE OR INTERIOR DUE TO NEGLIGENCE MUST BE REPAIRED BY THE CONTRACTOR.
3. CONTRACTOR TO MAINTAIN SITE IN A NEAT AND ORDERLY MANNER FOR EXTENT OF CONSTRUCTION.



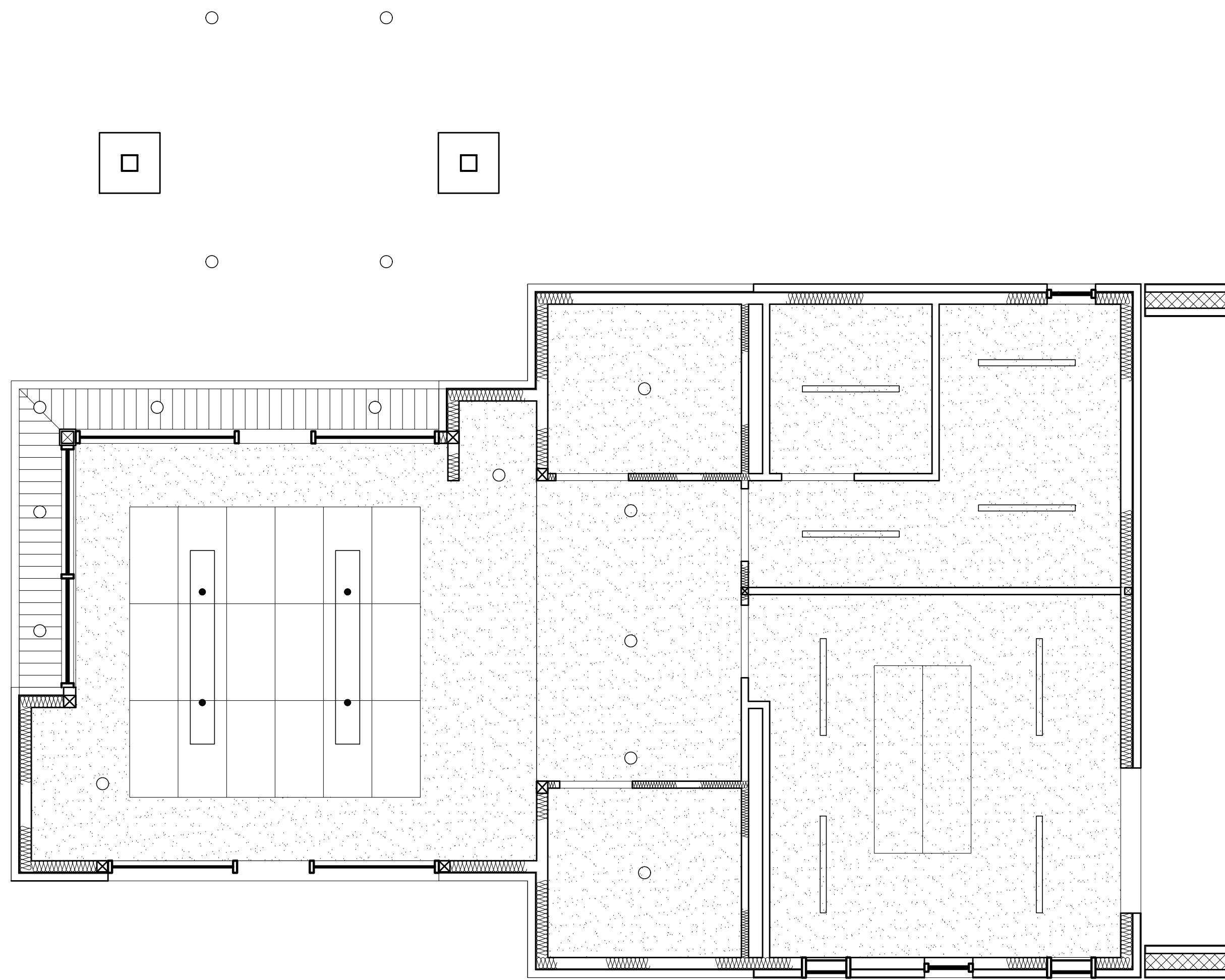
NO	REVISION	DATE

ISSUED FOR:	DESIGNED BY:
ISSUE DATE:	DRAWN BY:
SCALE:	CHECKED BY:

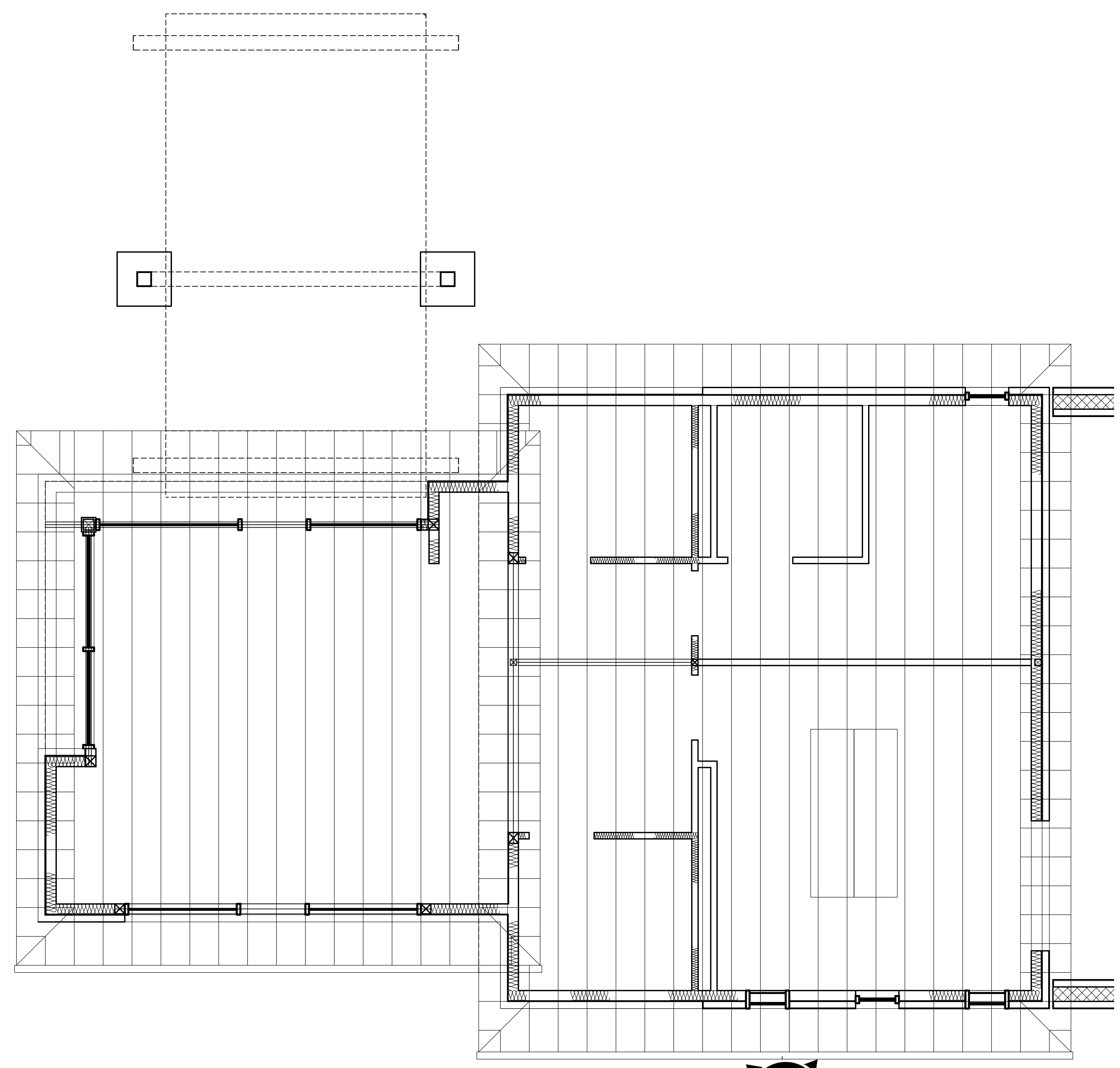
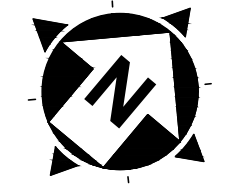
LAKETRA WICKLIFFE PARK-N-RIDE LOT
 29610 LAKE LAND BLVD., WICKLIFFE, OH 44092

CEILING AND FRAMING PLAN

PROJECT NO.	190065
DISCIPLINE	ARCHITECTURAL
SHEET NAME	A-02
SHEET	OF
34	49



REFLECTED CEILING PLAN
 SCALE: 1/8" = 1'-0"



FRAMING PLAN
 SCALE: 1/8" = 1'-0"

