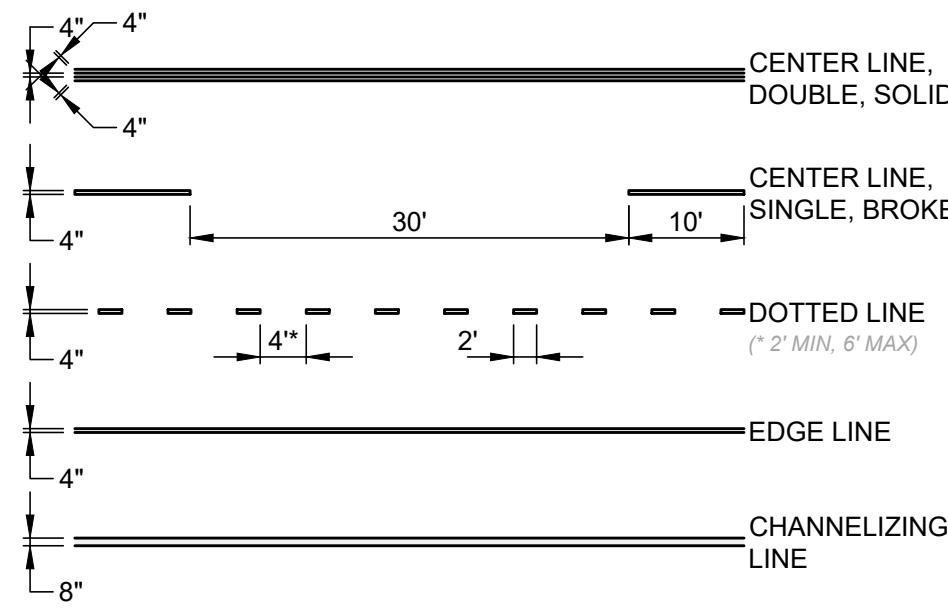
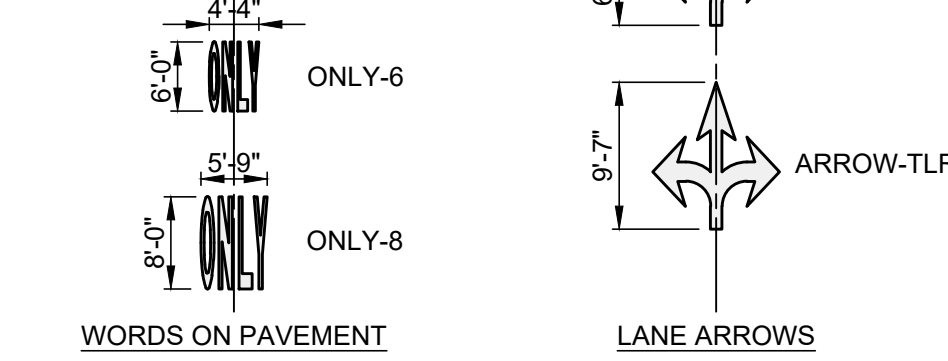
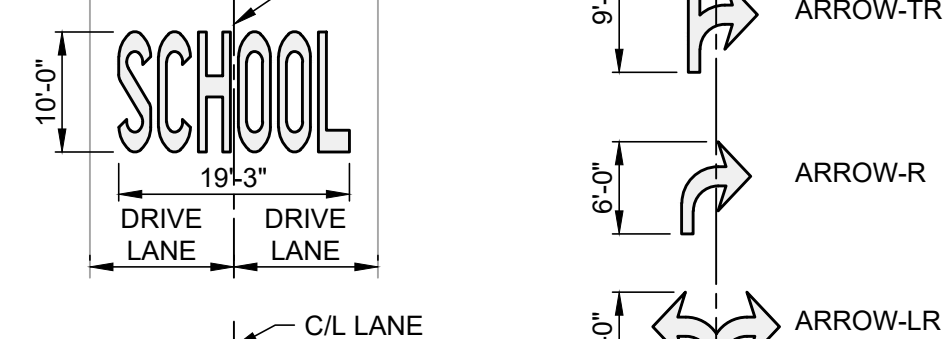
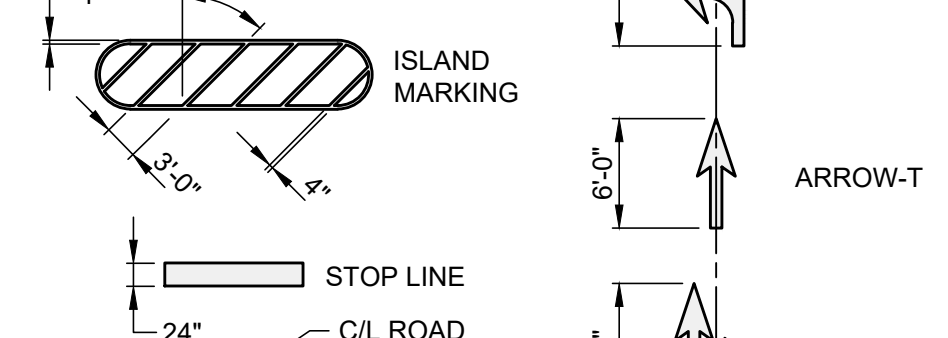
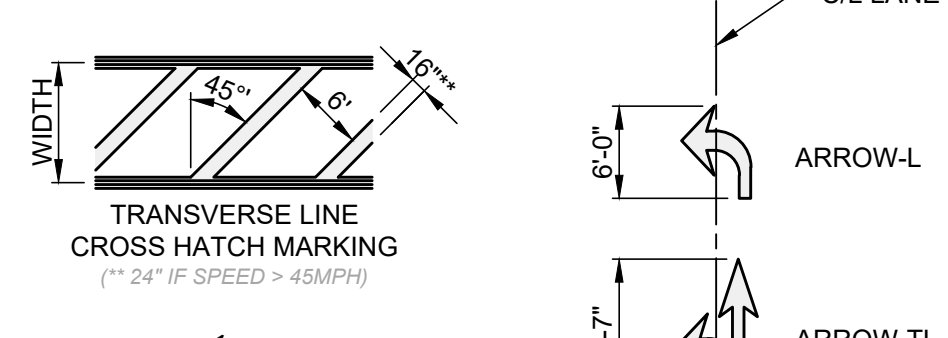
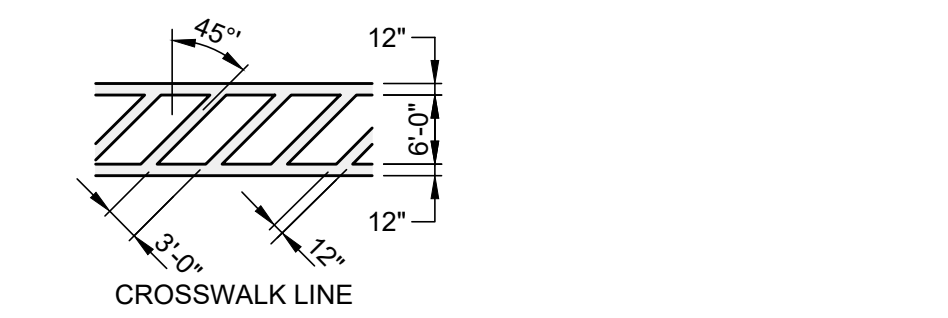


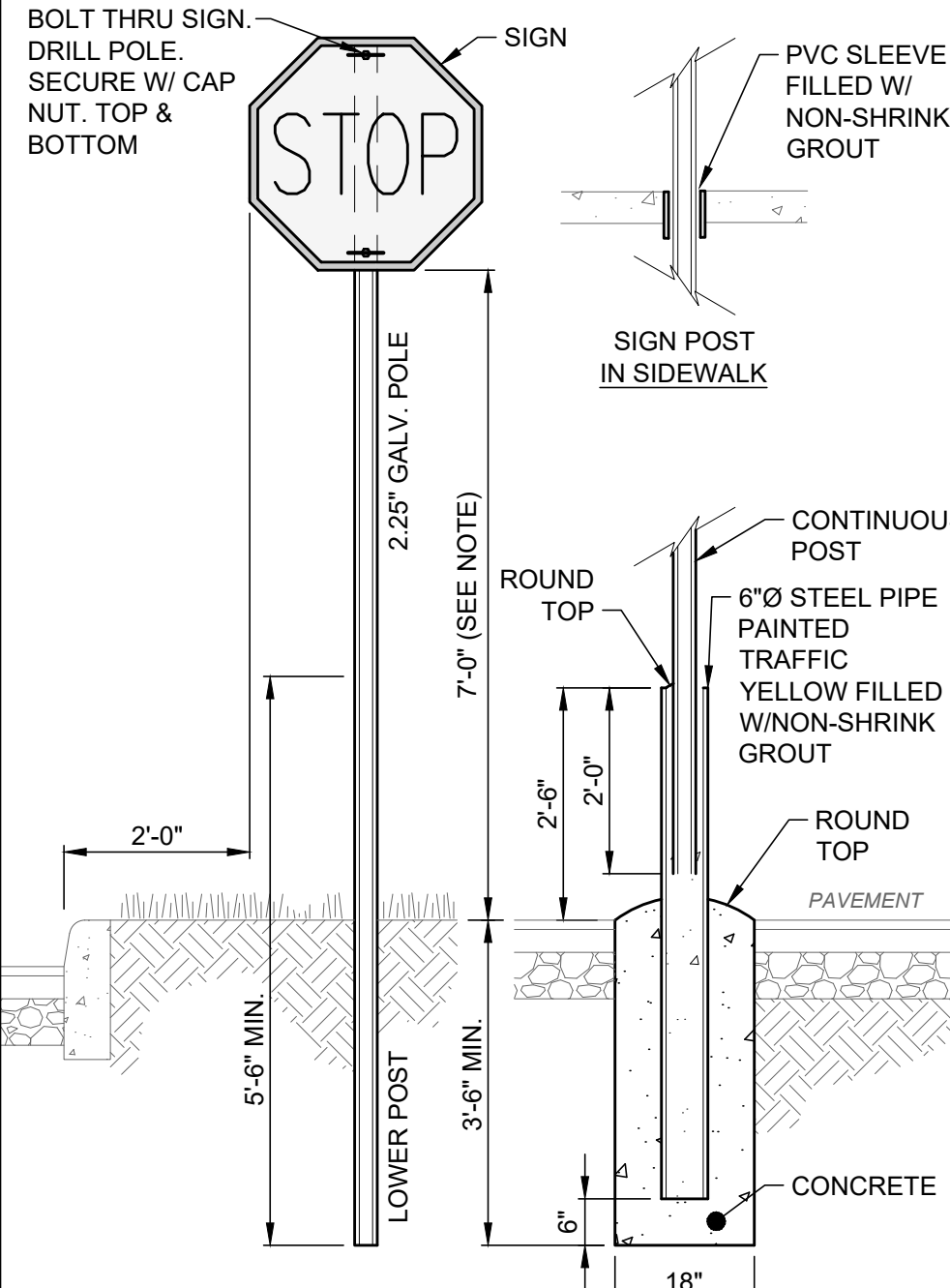
- NOTES:
- ALL PAINTED AREAS TO RECEIVE (2) 15 MIL COATS OF PAINT WITH 4 WEEK MIN. BETWEEN COATS.
 - SEE PAVEMENT MARKING DETAIL FOR ARROW PLACEMENT DIMENSIONS RELATIVE TO LANE LINES.

TURN AND STRAIGHT ARROW (6 FT) DETAIL
SCALE: NONE



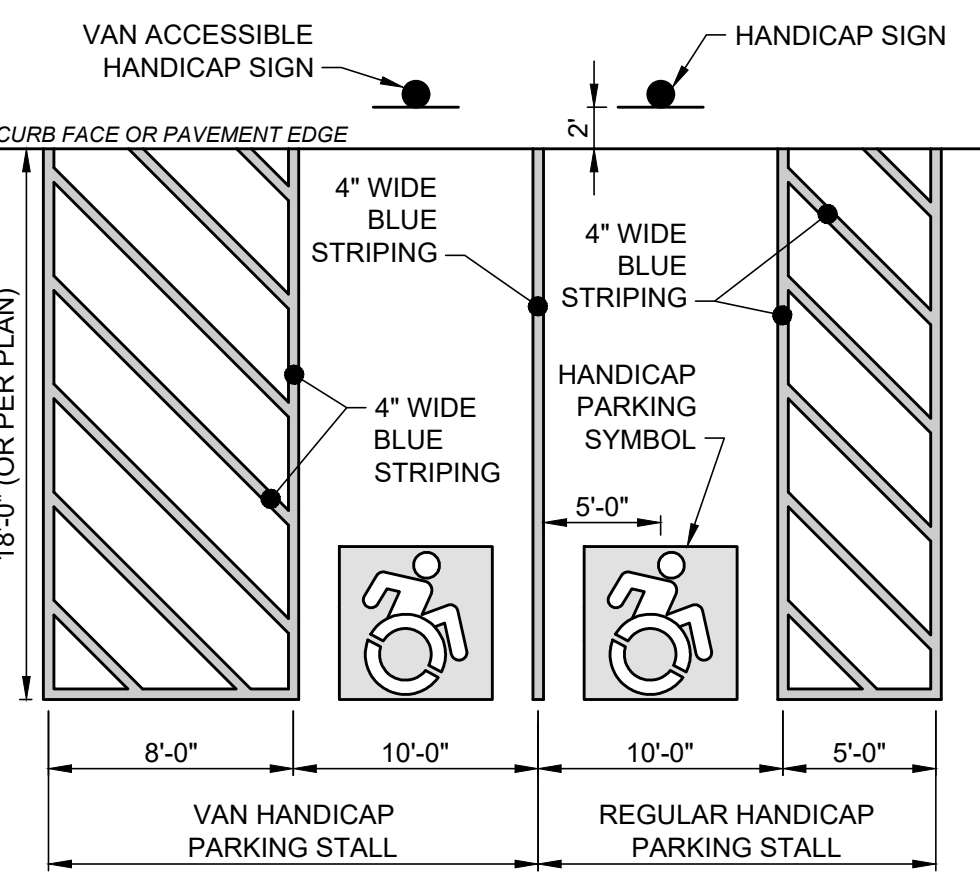
- NOTES:
- CENTER LINES MUST BE YELLOW. WORDS, LANE ARROWS, CHANNELIZING LINES, TRANSVERSE LINES, DOTTED LINES, EDGE LINES, STOP LINES AND CROSSWALKS MUST BE WHITE. PARKING STALL LINES AND ISLAND STRIPING TO DESIGNATE HANDICAP ACCESSIBILITY MUST BE BLUE. WORDS, LANE LINES AND ISLAND MARKING TO DESIGNATE FIRE LANES MUST BE RED. PARKING STALL LINES AND ISLAND MARKINGS SHALL BE WHITE OR YELLOW (AS PER PLAN). ALL OTHER PAVEMENT MARKINGS SHALL BE WHITE UNLESS SPECIFIED OTHERWISE.
 - ALL PAINTED AREAS SHALL RECEIVE (2) 15 MIL COATS OF PAINT WITH MINIMUM 4 OF WEEKS BETWEEN FIRST AND SECOND COATS, BUT NO LONGER THAN 12 WEEKS.
 - THIS DETAIL IS FOR REFERENCE ONLY; NOT ALL ITEMS MAY APPLY. SEE PLANS AND DETAILS FOR LOCATIONS AND SIZES.

PAVEMENT MARKING DETAIL
SCALE: NONE



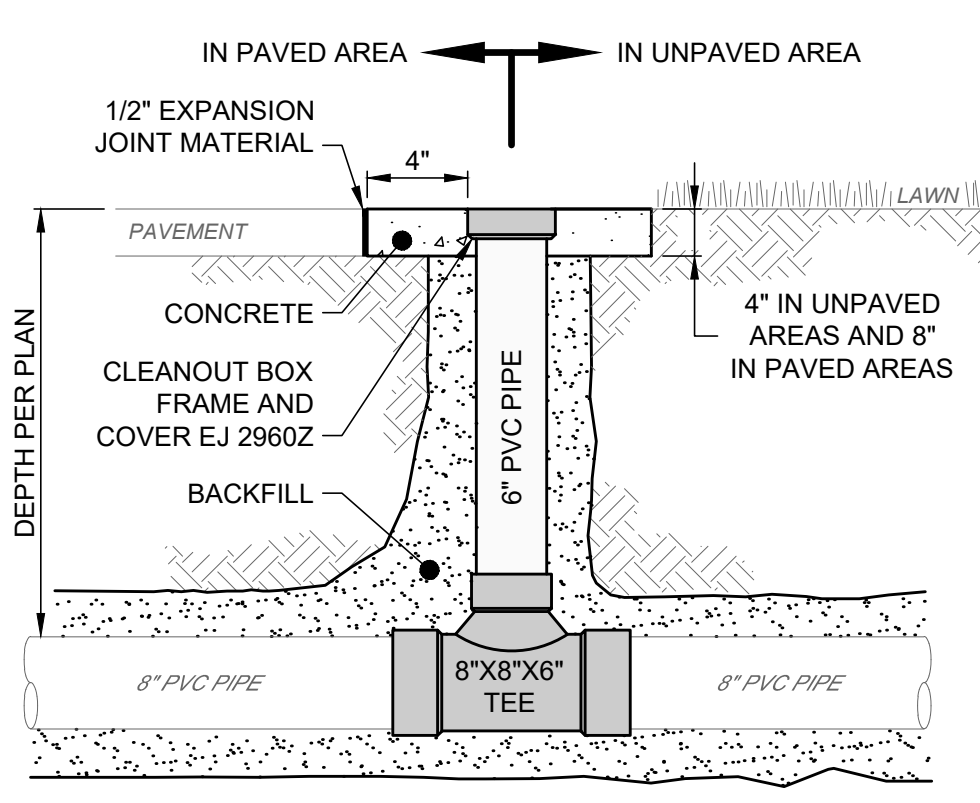
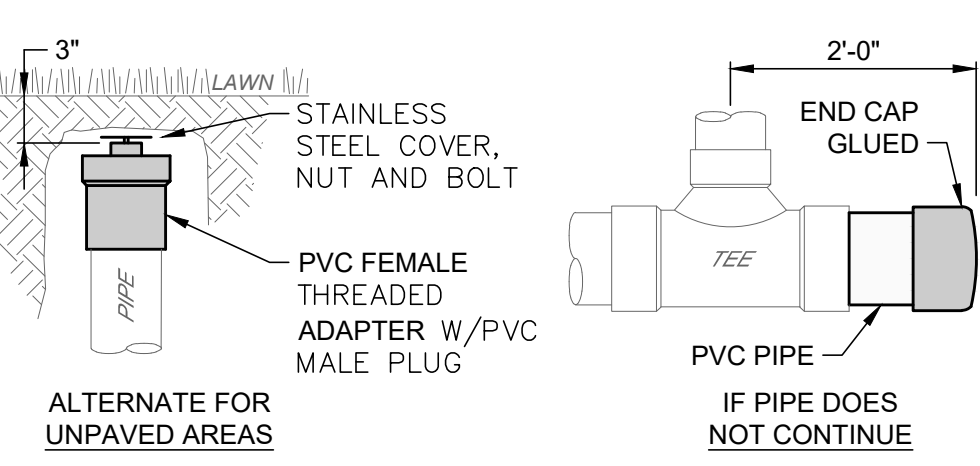
- NOTES:
- CONCRETE SHALL BE ODOT ITEM 499, CLASS QC-1.
 - POSTS SHALL BE 2 LB/FT GALVANIZED STEEL 2.25" ROUND.
 - "STOP" SIGN SHOWN FOR REFERENCE. SEE LAYOUT PLAN FOR SPECIFIC TYPE OF SIGNS TO BE USED.
 - IN BUSINESS, COMMERCIAL AND RESIDENTIAL AREAS, THE MINIMUM HEIGHT MEASURED FROM BOTTOM OF SIGN TO TOP OF CURB OR EDGE OF PAVEMENT SHALL BE 7'-0". THE HEIGHT TO THE BOTTOM OF A SECONDARY SIGN MOUNTED BELOW ANOTHER SIGN SHALL BE 6'-0".

SIGN POST DETAIL
SCALE: NONE



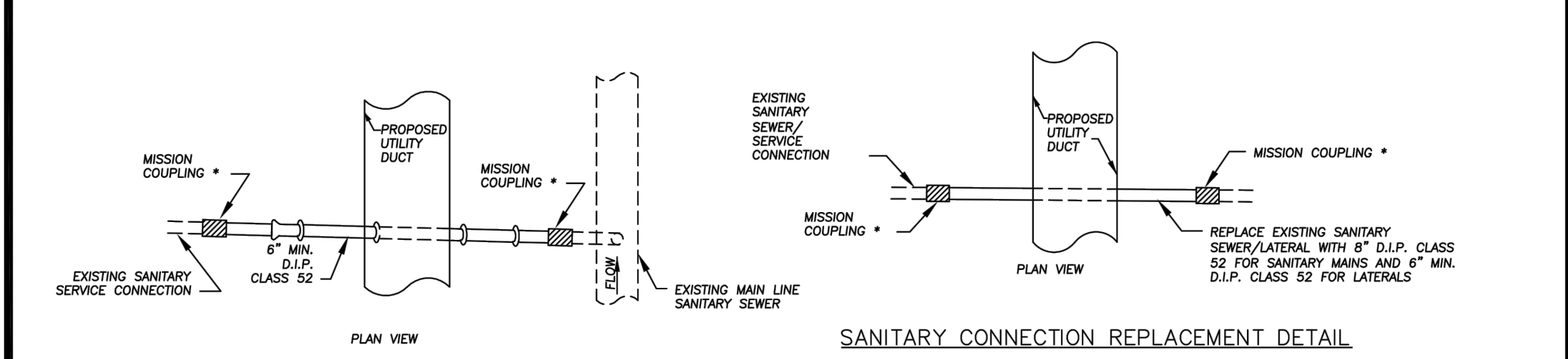
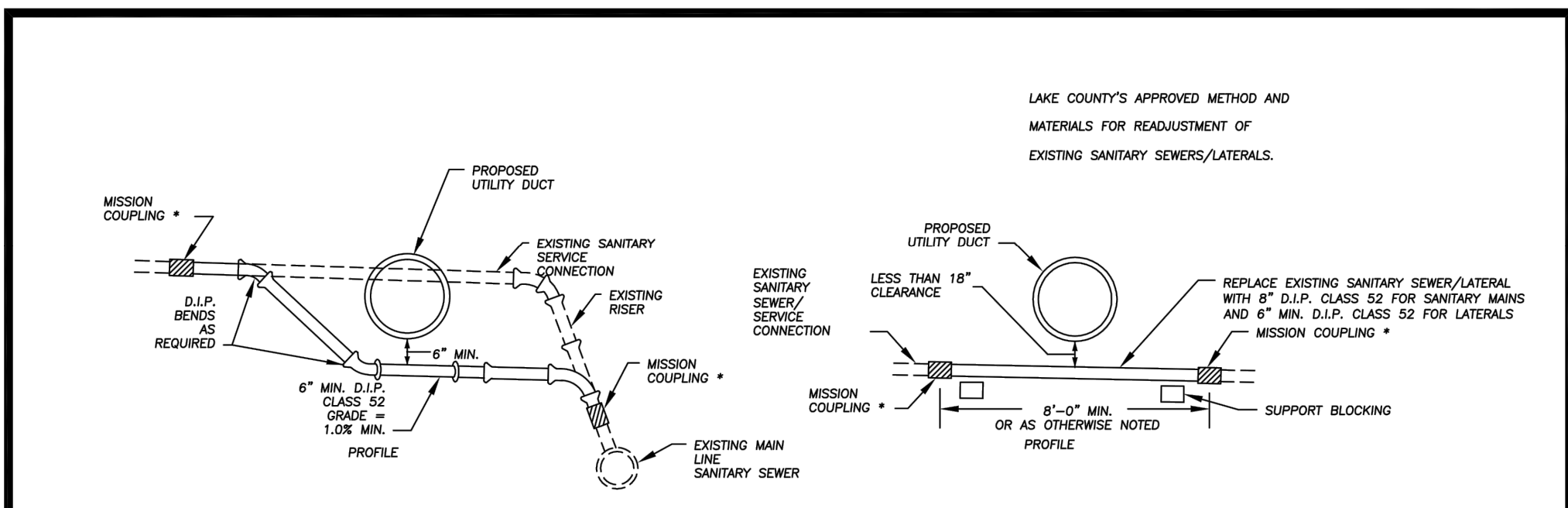
- NOTES:
- THIS DETAIL IS FOR REFERENCE AND DIMENSION CONTROL ONLY; SEE LAYOUT PLAN FOR ACTUAL CONFIGURATIONS AND NOT ALL ITEMS SHOWN MAY APPLY.
 - SEE SEPARATE DETAILS FOR SIGNS, HANDICAP PARKING SYMBOL AND BUMPER BLOCK.

HANDICAP PARKING LAYOUT DETAIL
SCALE: NONE



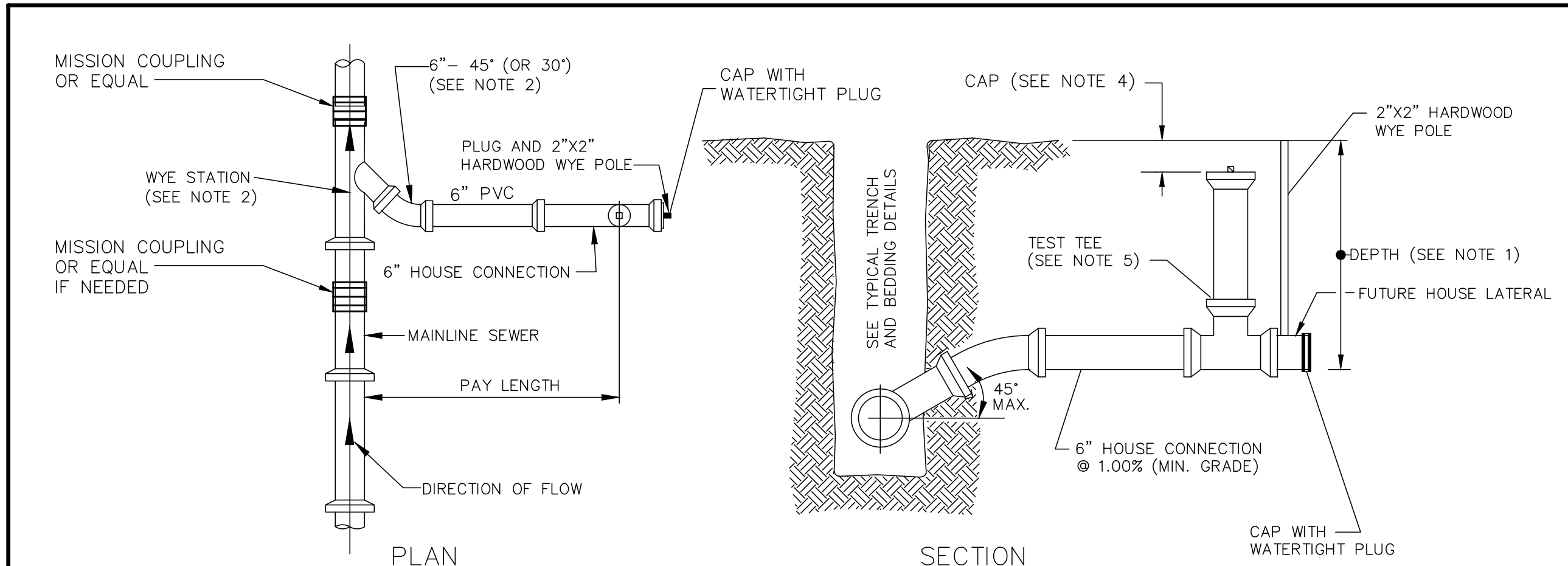
- NOTES:
- CONCRETE SHALL BE ODOT ITEM 499, CLASS QC-1.
 - USE 4" CLEANOUT FOR 4" PIPE, AND 6" CLEANOUT FOR 6" AND ABOVE (6" CLEANOUT SHOWN WITH 8" PIPE).
 - CASTING SHALL MEET H-20 LOADING.

SANITARY CLEANOUT TYPE 1 DETAIL
SCALE: NONE



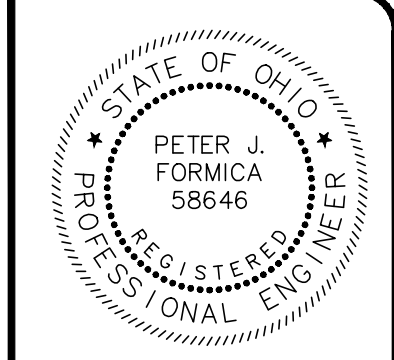
- NOTES:
- IN ALL CASES WHERE A SANITARY SEWER OR LATERAL CROSSES OVER OR UNDER A WATER LINE AND/OR STORM SEWER WITH LESS THAN 18" CLEARANCE, THE SANITARY PIPE MATERIAL SHALL BE CLASS 52 D.I.P. THE D.I.P. SHALL BE THE LENGTH SPECIFIED ON THE PLANS, CENTERED ACROSS THE PIPE OR PIPES FOR WHICH THE CLEARANCE IS LESS THAN 18". THE LENGTH OF EACH D.I.P. CROSSING SHOWN ON THE PLANS IS EITHER IN FULL OR HALF INCREMENTS OF STANDARD D.I.P. LENGTH AND MAY VARY ONLY SLIGHTLY ACCORDING TO THE MANUFACTURER.
 - ALL MATERIALS SHALL BE AS LISTED IN THE LCU APPROVED MATERIALS LIST.

SANITARY CONNECTION REPLACEMENT & MODIFICATION
DATE: 09-09 DRAWN BY: DDB SCALE: NONE



- NOTES:
- SEWER LATERALS ARE TO BE INSTALLED AT A MINIMUM SLOPE OF 1%. ALL EXCEPTIONS AND DEPTH OF LATERALS SHALL BE APPROVED BY THE CITY PRIOR TO INSTALLATION.
 - WYES ONLY ARE TO BE PROVIDED FOR ALL SANITARY CONNECTIONS TO THE MAINLINE SEWERS. USE 45' OR 30' ELL AS REQUIRED TO REDIRECT LATERALS PERPENDICULAR TO MAINLINE SEWER.
 - PROVIDE THREADED, WATERTIGHT, PLASTIC CAP WITH 3/4" STEEL BOLT EMBEDDED IN THE CAP. TOP OF CAP TO BE 6" BELOW FINISHED GROUND GRADE. ALL TEST TEES INSTALLED IN ASPHALT, STONE, OR CONCRETE SHALL BE INSTALLED FLUSH WITH THE EXISTING GRADE.
 - TEST TEES ARE TO BE PROVIDED FOR ALL NEW SANITARY LATERALS CONNECTED DIRECTLY TO SANITARY SEWER MAIN.

SEWER LATERAL DETAIL



DATE	REVISION	NO	CD	ISSUED FOR:	ISSUE DATE:	SCALE:	DESIGNED BY:	DRAWN BY:	CHECKED BY:
			4/10/20	AS NOTED		PJF / GMS	GMS	PJF	

LAKETRAK WICKLIFFE PARK-N-RIDE LOT
29610 LAKELAND BLVD., WICKLIFFE, OH 44092

CONSTRUCTION DETAILS 2

PROJECT NO.	190065
DISCIPLINE	CIVIL
SHEET NAME	DT-2
SHEET	13
OF	49