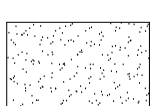


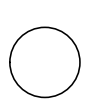
CEILING LEGEND



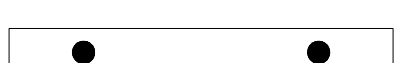
24" X 36" SUSPENDED
CEILING GRID SYSTEM



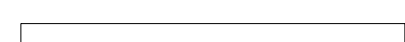
PAINTED GYPSUM BD.



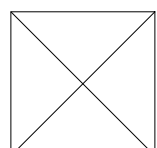
RECESSED CAN LIGHT



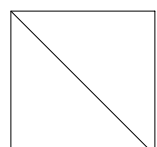
PENDENT FIXTURE



LINEAR DIFFUSER



S.A. GRILLE



R.A. GRILLE



EXIT LIGHT

GYPSUM BOARD METAL SUSPENSION SYSTEMS
AS MFG BY THE UNITED STATES GYPSUM COMPANY (USG)
OR APPROVED EQUAL.

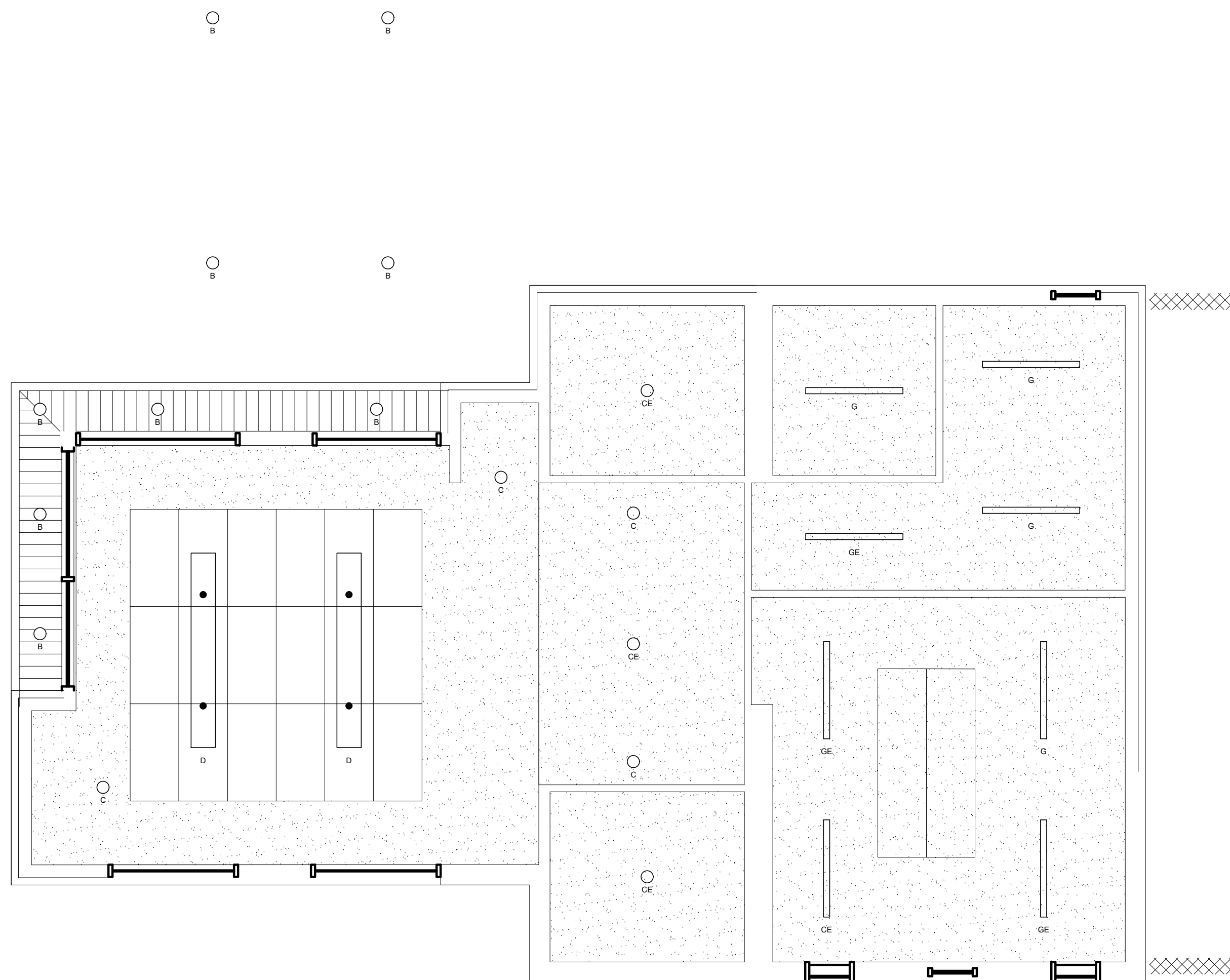
PERFORMANCE REQUIREMENTS: FABRICATE AND INSTALL
SYSTEMS AS INDICATED BUT NOT LESS THAN THAT REQUIRED TO COMPLY WITH ASTM C754 UNDER THE FOLLOWING
CONDITIONS: INTERIOR SUSPENDED CEILINGS AND SOFFITS. MAXIMUM DEFLECTION OF 1/32" OF DISTANCE BETWEEN
METAL SUPPORTS.

CEILING SUPPORT MATERIAL:

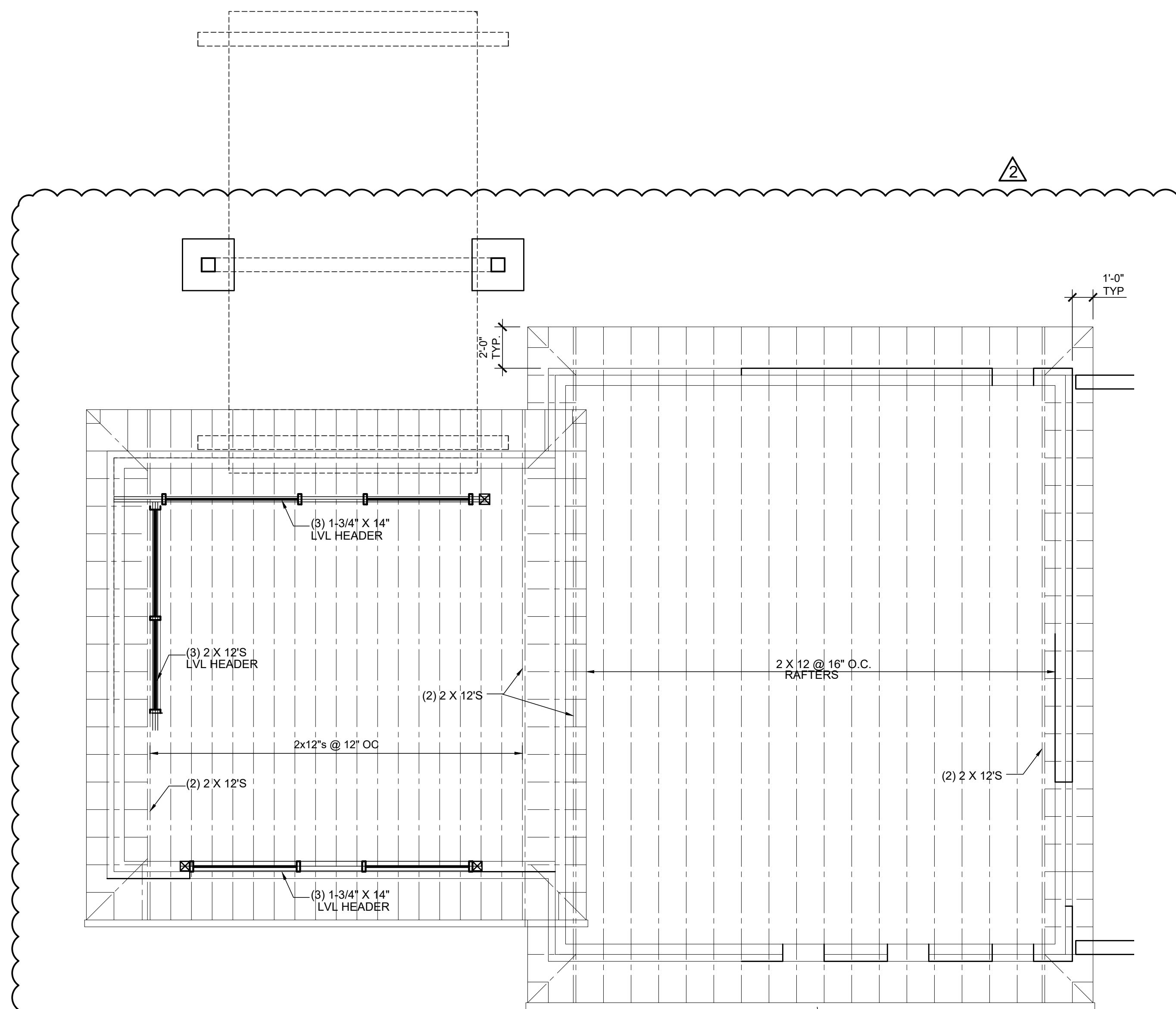
- A. HANGER ANCHORAGE DEVICES: SCREWS, CLIPS, BOLTS OR OTHER DEVICES COMPATIBLE WITH INDICATED STRUCTURAL ANCHORAGE FOR CEILING HANGERS AND WHOSE SUITABILITY HAS BEEN PROVEN THROUGH STANDARD CONSTRUCTION PRACTICES OR BY CERTIFIED TEST DATA.
- B. HANGERS: STEEL WIRE OR RODS, SIZES TO COMPLY WITH REQUIREMENTS OF ASTM C754 FOR CEILING OR WIRE: ASTM A641, SOFT, CLASS 1 GALVANIZED RODS AND FLATS: MILD STEEL COMPONENTS. GALVANIZED OR PAINTED WITH RUST INHIBITIVE PAINT FOR INTERIOR WORK.
- C. FRAMING SYSTEM: MAIN RUNNERS: COLD ROLLED "C" SHAPED STEEL CHANNELS, 16 GAUGE MINIMUM FINISH: GALVANIZED OR PAINTED WITH RUST INHIBITIVE PAINT
- D. CROSS FURRING: HAT-SHAPED STEEL FURRING CHANNELS, ASTM C645, 1/2" INCH HIGH, 25 GAUGE, GALVANIZED
- F. FURRING ANCHORAGE: 16 GAUGE GALVANIZED WIRE TIES MANUFACTURER'S STANDARD WIRE TYPE CLIPS, BOLTS, NAILS OR SCREWS RECOMMENDED BY FURRING MANUFACTURER AND COMPLYING WITH ASTM C754.
- G. METAL SUPPORT INSTALLATION: SECURE HANGERS OR RODS ATO STRUCTURAL SUPPORT BY CONNECTING DIRECTLY TO STRUCTURE WHERE POSSIBLE: OTHERWISE CONNECT TO INSERTS, CLIPS OR OTHER ANCHORAGE DEVICES OR FASTENER, AS INDICATED. SPACE MAIN RUNNERS, HANGERS AND FURRING ACCORDING TO REQUIREMENTS OF ASTM C754
- H. WHERE SPACING OF STRUCTURAL MEMBERS, OR WIDTHS OR OTHER DUCT EQUIPMENT, PREVENTS REGULAR SPACING OF HANGERS, PROVIDE SUPPLEMENTAL HANGERS AND SUSPENSION MEMBERS AND REINFORCE NEAREST AFFECTED HANGERS TO SPAN EXTRA DISTANCE.

GENERAL NOTES:

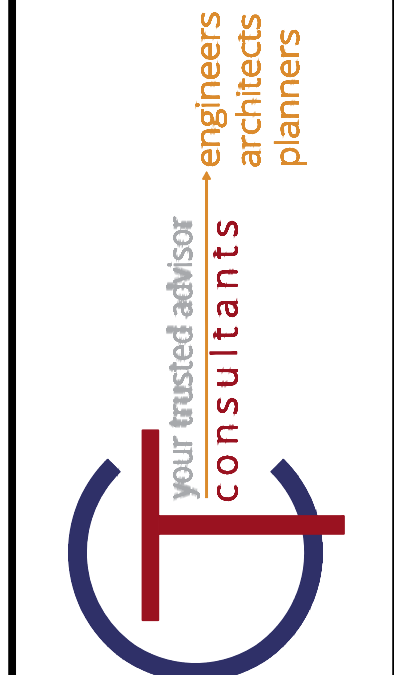
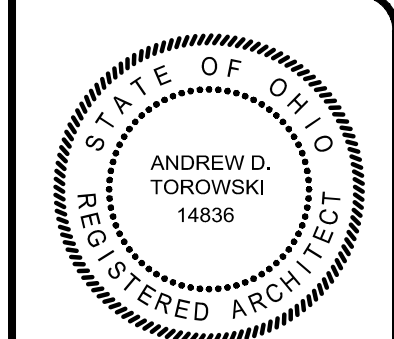
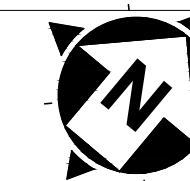
1. CONTRACTOR TO FIELD VERIFY ALL DIMENSIONS AND EXISTING CONDITIONS BEFORE SUBMITTING A BID PROPOSAL. DELETIONS FROM DRAWINGS WILL NOT BE ACCEPTED AS JUST CAUSE FOR CHANGING THE CONTRACT COST. DRAWINGS ARE INTENDED TO SHOW AREAS OF WORK AND DESIGN INTENT ONLY.
2. CONTRACTOR IS RESPONSIBLE FOR ALL SECURITY AND WEATHER-PROOFING RELATED ITEMS DURING CONSTRUCTION. INTENDED MATERIALS AND COURT SYSTEM MUST BE APPROVED BY ARCHITECT. ANY DAMAGE TO EXISTING STRUCTURE OR INTERIOR DUE TO NEGLECT MUST BE REPAIRED BY THE CONTRACTOR.
3. CONTRACTOR TO MAINTAIN SITE IN A NEAT AND ORDERLY MANNER FOR EXTENT OF CONSTRUCTION.



REFLECTED CEILING PLAN
SCALE: 1/4" = 1'-0"



FRAMING PLAN
SCALE: 1/4" = 1'-0"



NO	REVISION	DATE
1	ADDENDUM 2	5/5/20

ISSUED FOR	ISSUE DATE	SCALE	DESIGNED BY	DRAWN BY	CHECKED BY

LAKETRAN WICKLIFFE PARK-N-RIDE LOT
29610 LAKELAND BLVD., WICKLIFFE, OH 44092

CEILING AND FRAMING PLAN

PROJECT NO.	190065
DISCIPLINE	ARCHITECTURAL
SHEET NAME	A-02
SHEET	OF
34	49