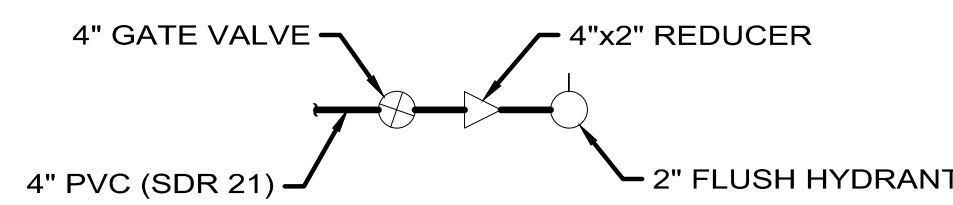
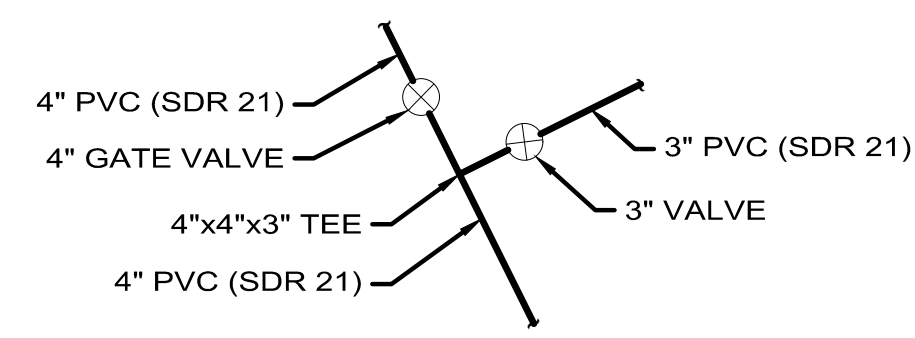


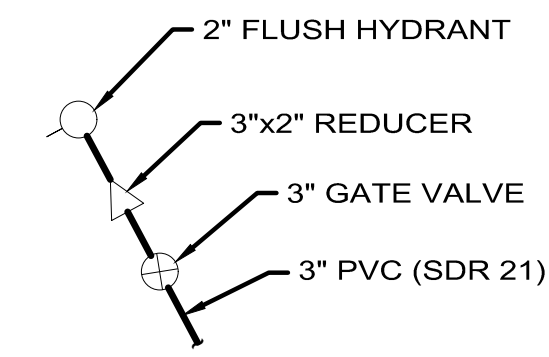
DETAIL 1
SCALE: NTS



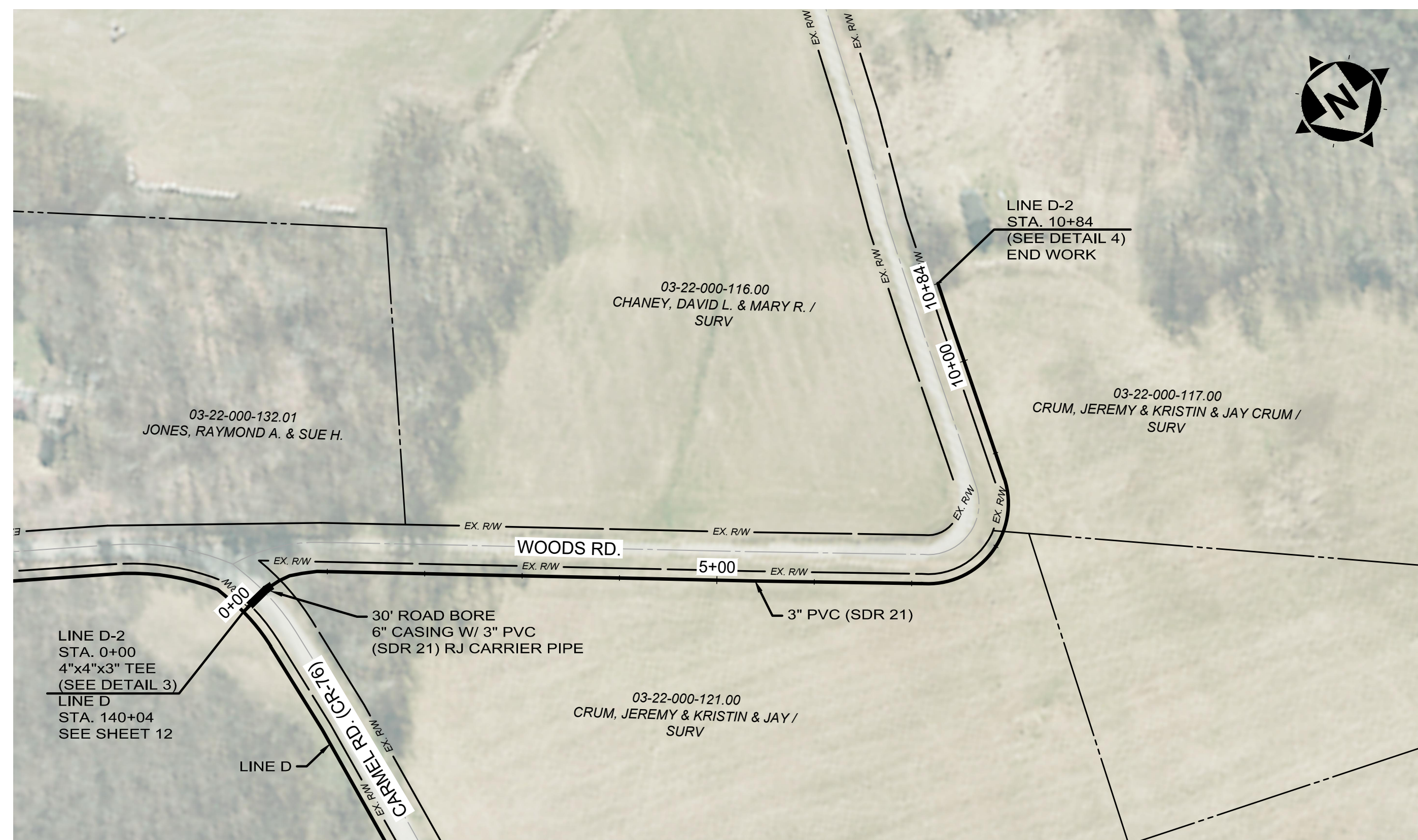
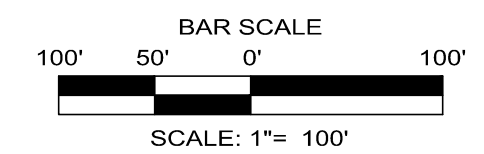
DETAIL 2
SCALE: NTS



DETAIL 3
SCALE: NTS



DETAIL 4
SCALE: NTS

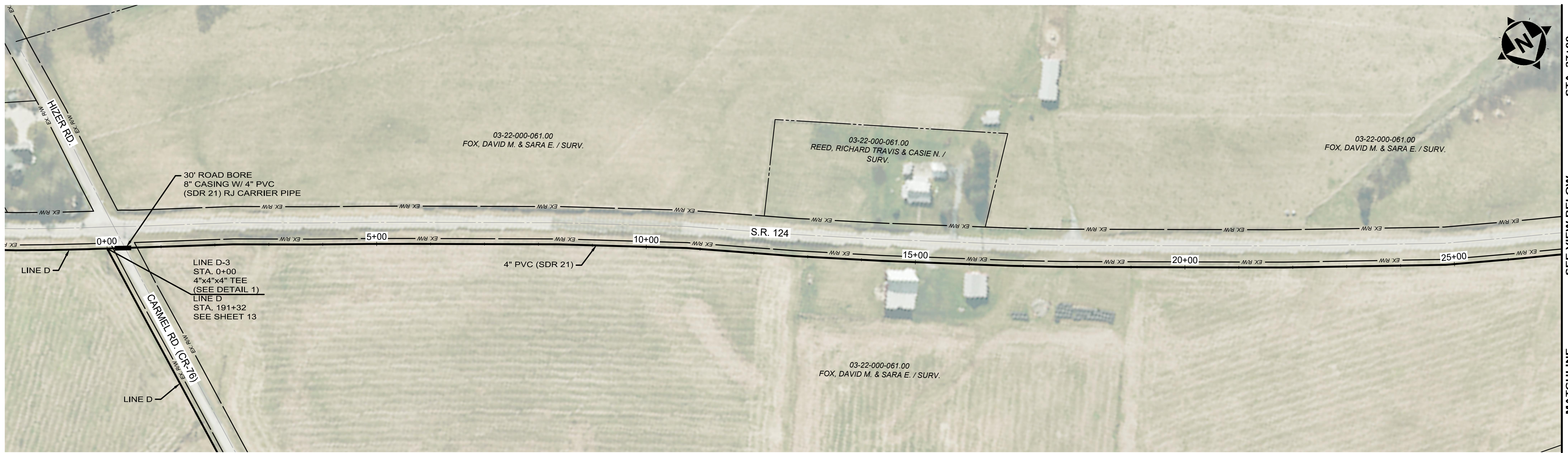


your trusted advisor
consultants
engineers
architects
planners

ISSUED FOR:	DATE	REVISION	NO	ALIGNMENT REVISIONS
DEPA REVIEW	4/3/20		1	
ISSUE DATE:	1/18/19			
SCALE:	AS SHOWN			
DESIGNED BY:	BRA			
DRAWN BY:	AGD			
CHECKED BY:	BRA			

HIGHLAND/PIKE
WATERLINE EXTENSION
HIGHLAND & PIKE COUNTY, OHIO
LINE D-1 & LINE D-2

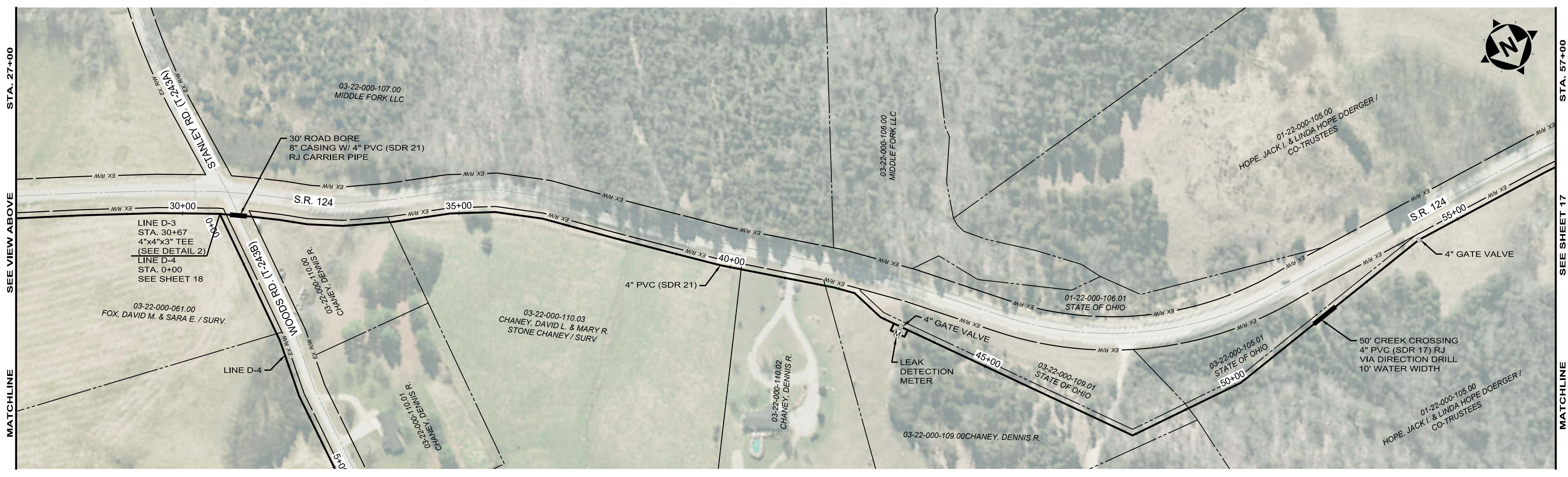
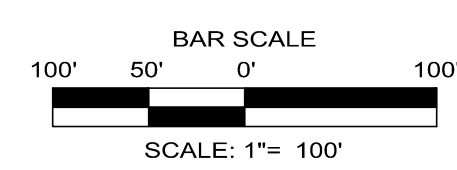
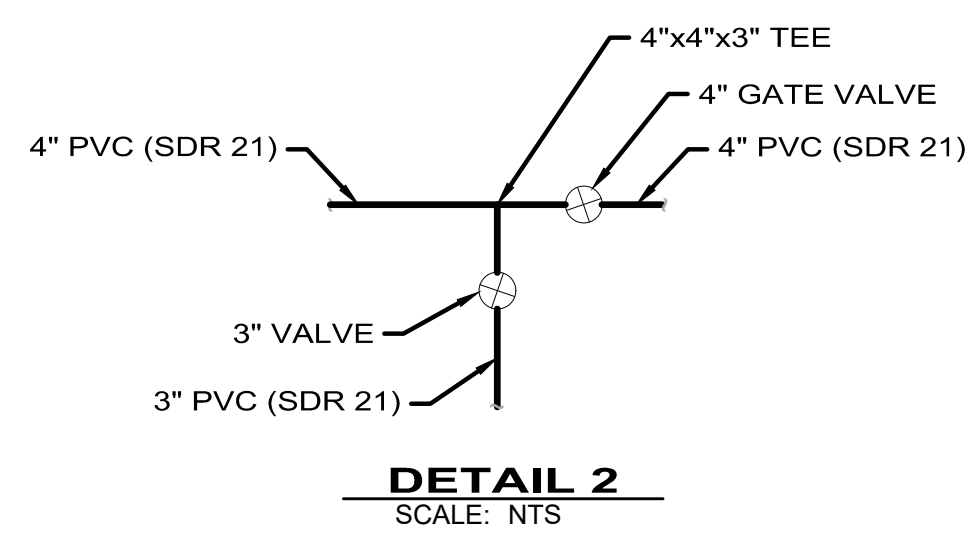
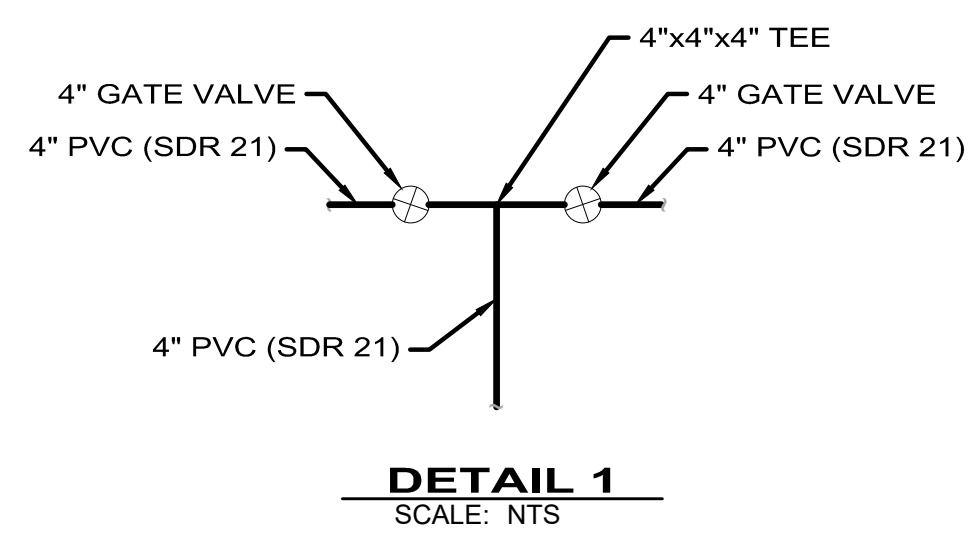
PROJECT NO.	180735
DISCIPLINE	CIVIL
SHEET NAME	01C-08
SHEET	OF
15	25



STA. 27+00

SEE VIEW BELOW

MATCHLINE



STA. 27+00

SEE VIEW ABOVE

MATCHLINE

STA. 57+00

SEE SHEET 17

MATCHLINE

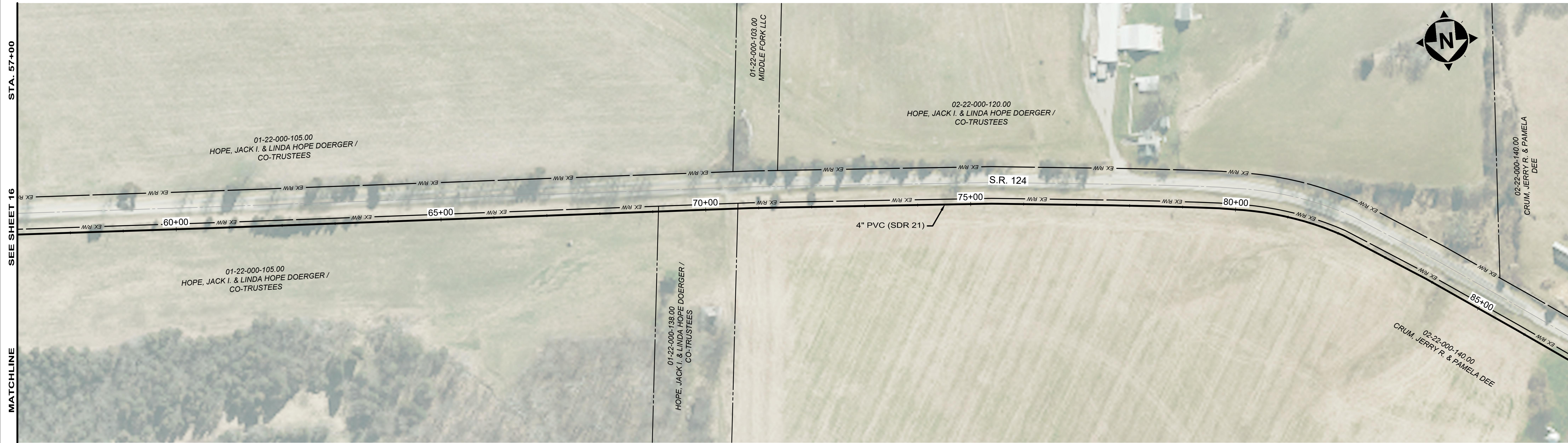
your trusted advisor
engineers
architects
planners
consultants

ISSUED FOR:	DATE	REVISION	NO
DEPA REVIEW	4/3/20	ALIGNMENT REVISIONS	1
ISSUE DATE:	1/18/19	AS SHOWN	
SCALE:		BRA	
DESIGNED BY:		ACD	
DRAWN BY:		BRA	
CHECKED BY:		BRA	

**HIGHLAND/PIKE
WATERLINE EXTENSION
HIGHLAND & PIKE COUNTY, OHIO**

LINE D-3

PROJECT NO.	180735
DISCIPLINE	CIVIL
SHEET NAME	01C-10
SHEET	OF
16	25



STA. 57+00

SEE SHEET 16

MATCHLINE

STA. 87+00

SEE VIEW BELOW

MATCHLINE



your trusted advisor
CONSULTANTS
 engineers
 architects
 planners

ISSUED FOR:	DATE	NO	REVISION
OEPA REVIEW	4/3/20	1	ALIGNMENT REVISIONS
ISSUE DATE:	AS SHOWN		
SCALE:	BRA		
DESIGNED BY:	ACD		
DRAWN BY:	BRA		
CHECKED BY:	BRA		



STA. 87+00

SEE VIEW ABOVE

MATCHLINE

STA. 115+00

SEE SHEET 18

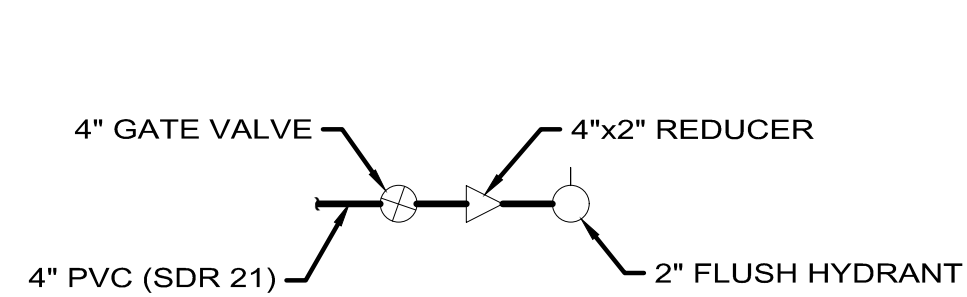
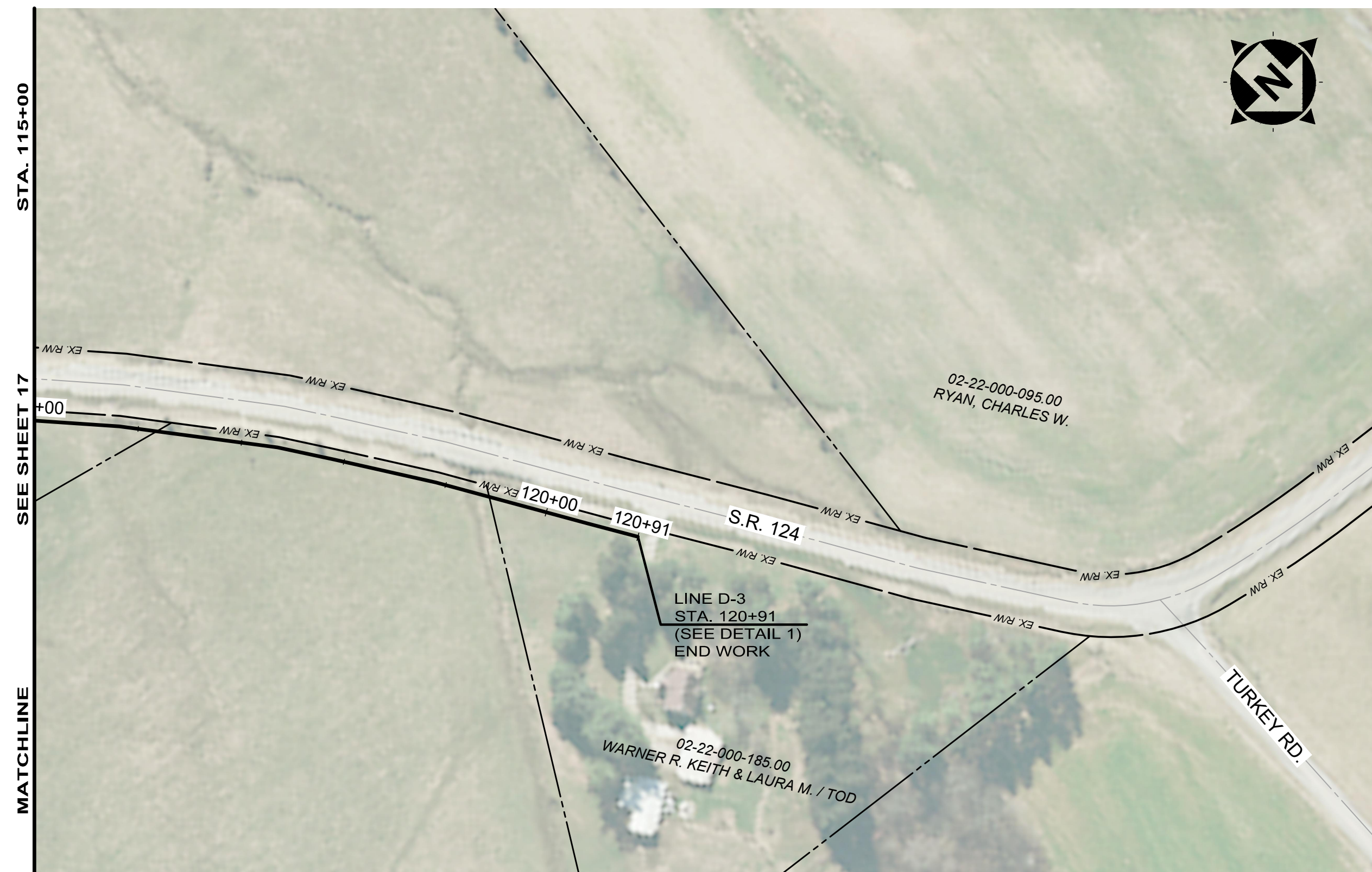
MATCHLINE



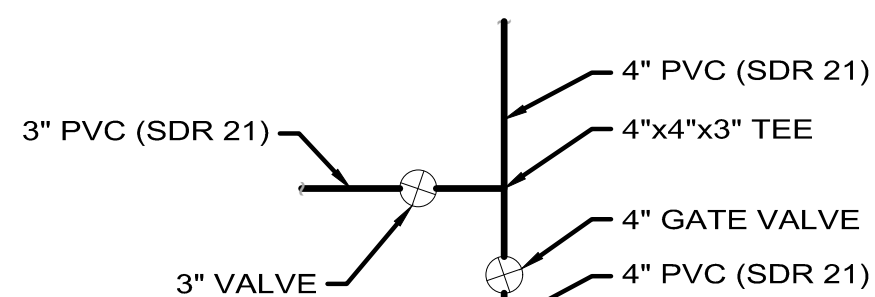
**HIGHLAND/PIKE
 WATERLINE EXTENSION
 HIGHLAND & PIKE COUNTY, OHIO**

LINE D-3

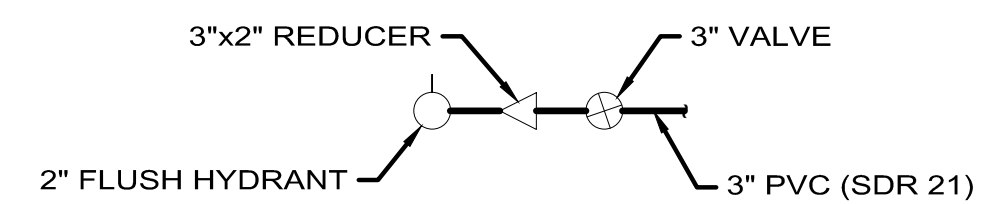
PROJECT NO. 180735	
DISCIPLINE CIVIL	
SHEET NAME 01C-11	
SHEET 17	OF 25



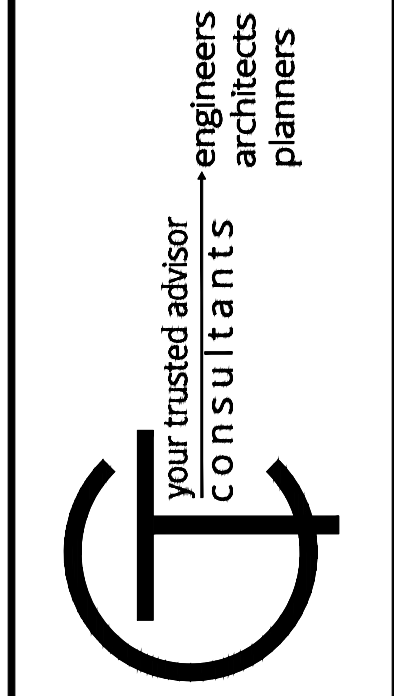
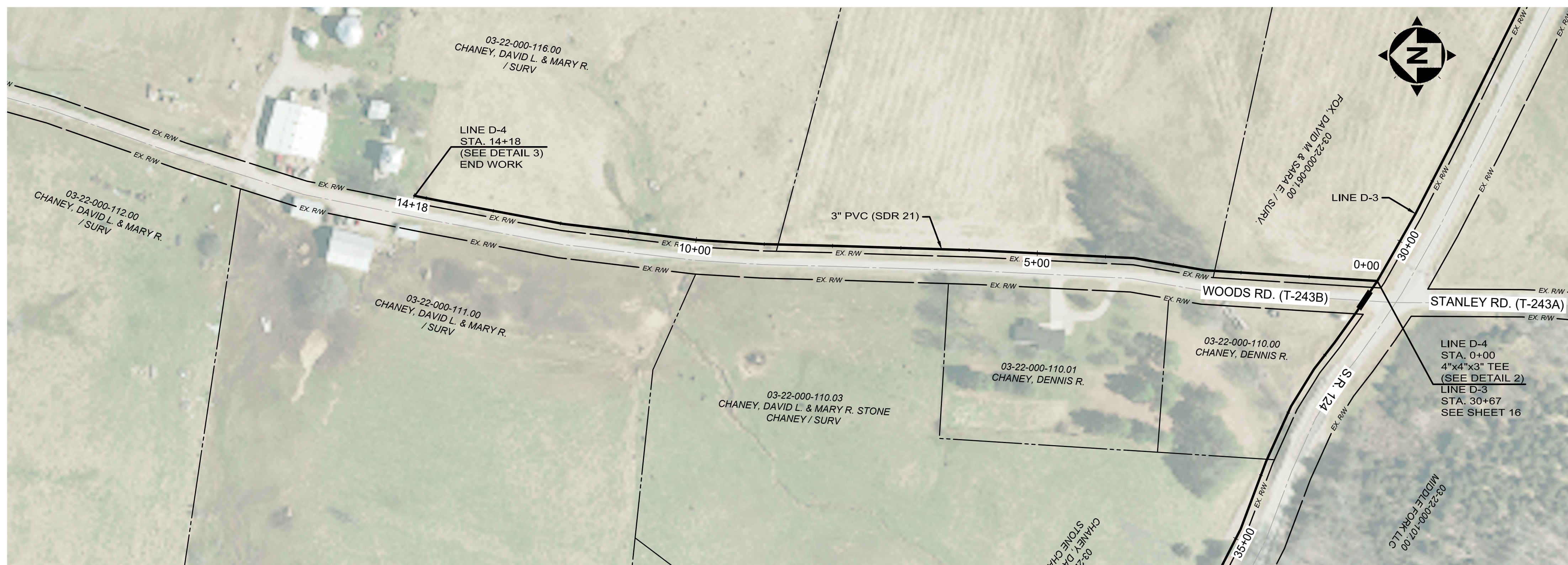
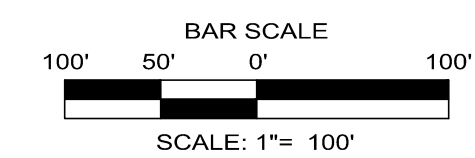
DETAIL 1
SCALE: NTS



DETAIL 2
SCALE: NTS



DETAIL 3
SCALE: NTS

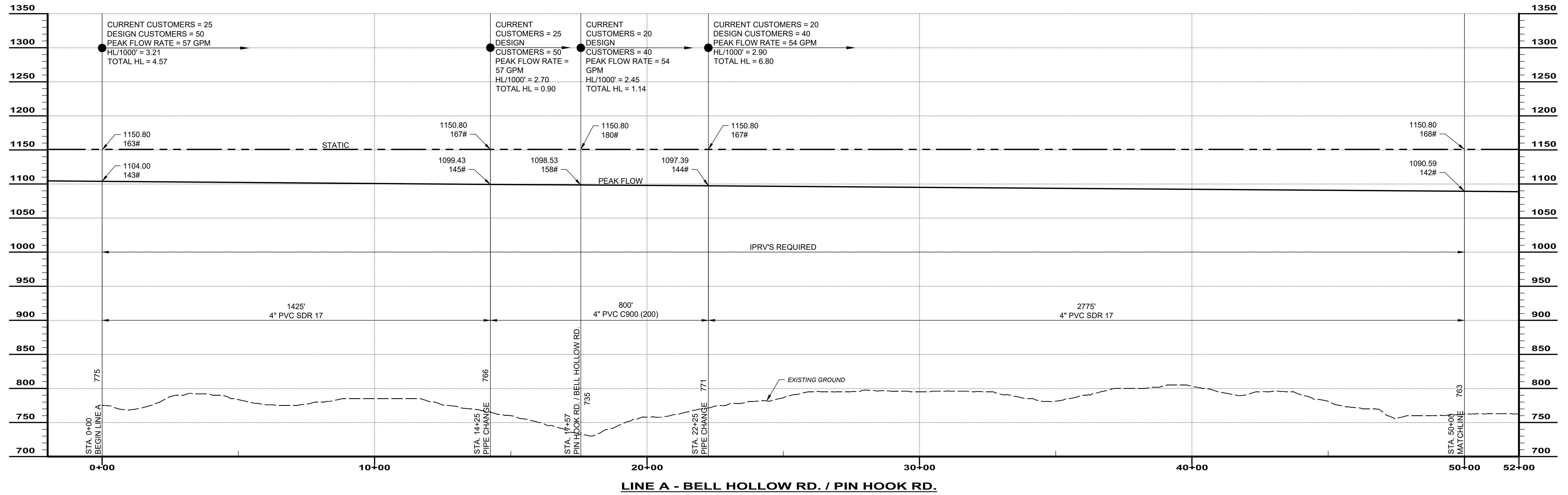


ISSUED FOR:	DATE	REVISION	NO
OEPA REVIEW	1/18/19	ALIGNMENT REVISIONS	1
ISSUE DATE:	4/3/20		
SCALE:	AS SHOWN		
DESIGNED BY:	BRA		
DRAWN BY:	ACD		
CHECKED BY:	BRA		

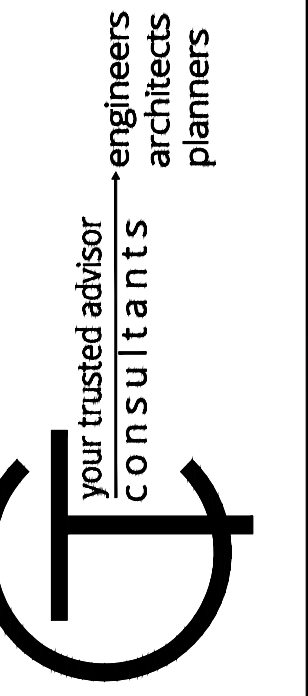
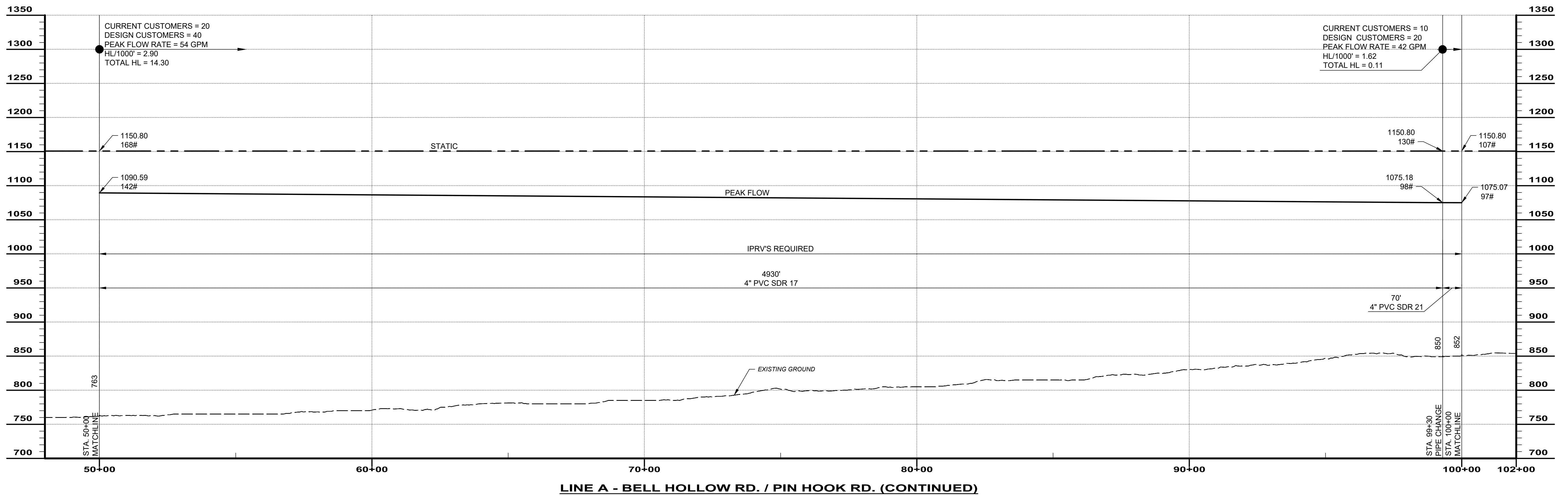
**HIGHLAND/PIKE
WATERLINE EXTENSION
HIGHLAND & PIKE COUNTY, OHIO**

LINE D-3 & LINE D-4

PROJECT NO.	180735
DISCIPLINE	CIVIL
SHEET NAME	01C-12
SHEET	OF
18	25



NOTE:
 STATIC HGL NOTED IS BASED UPON PUMPING HGL FROM DRY BONE BOOSTER TO THE SINKING SPRING TANK.

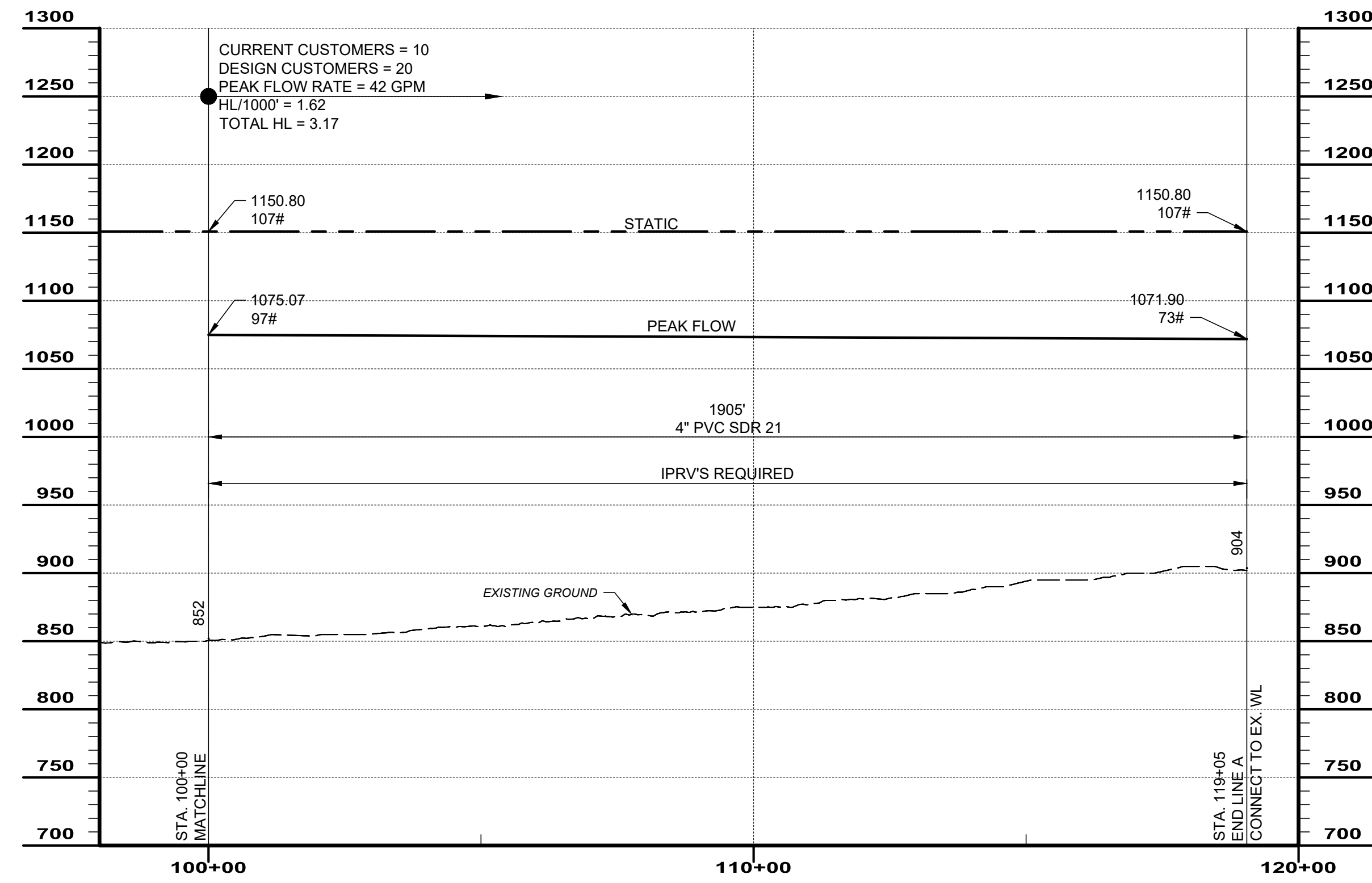


ISSUED FOR:	DATE	REVISION	NO
OEPA REVIEW	1/18/19	ALIGNMENT REVISIONS	1
ISSUE DATE:	4/3/20	SCALE:	AS SHOWN
DESIGNED BY:	BRA	DRAWN BY:	ISC
CHECKED BY:	BRA		

**HIGHLAND/PIKE
 WATERLINE EXTENSION
 HIGHLAND & PIKE COUNTY, OHIO**

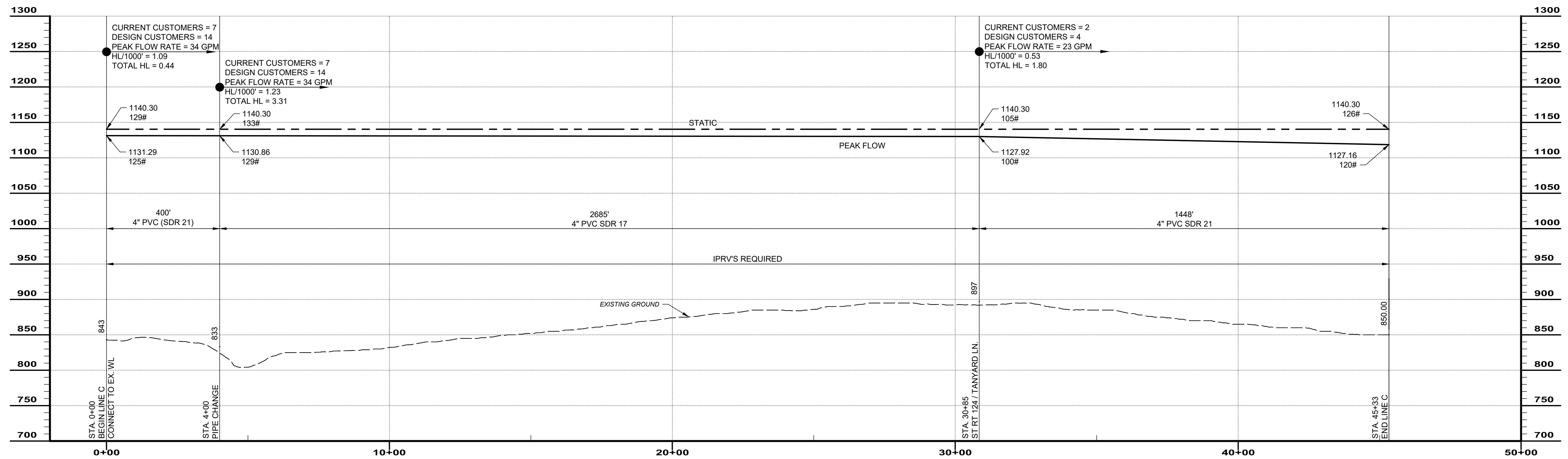
LINE A

PROJECT NO.	180735
DISCIPLINE	CIVIL
SHEET NAME	02C-01
SHEET	19
OF	25

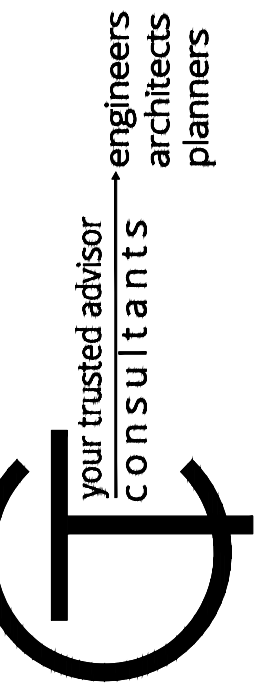


LINE A - BELL HOLLOW RD. / PIN HOOK RD. (CONTINUED)

NOTE:
 STATIC HGL NOTED IS BASED UPON PUMPING HGL FROM
 DRY BONE BOOSTER TO THE SINKING SPRING TANK.



LINE C - S.R. 124 (W. FROM S.R. 41)

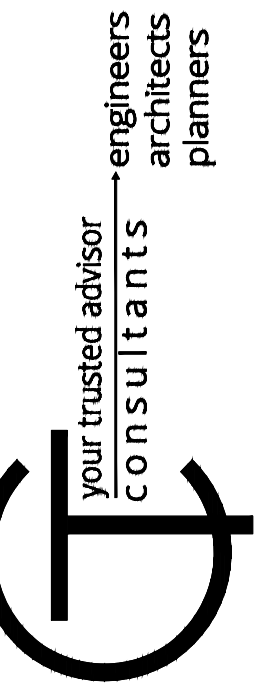
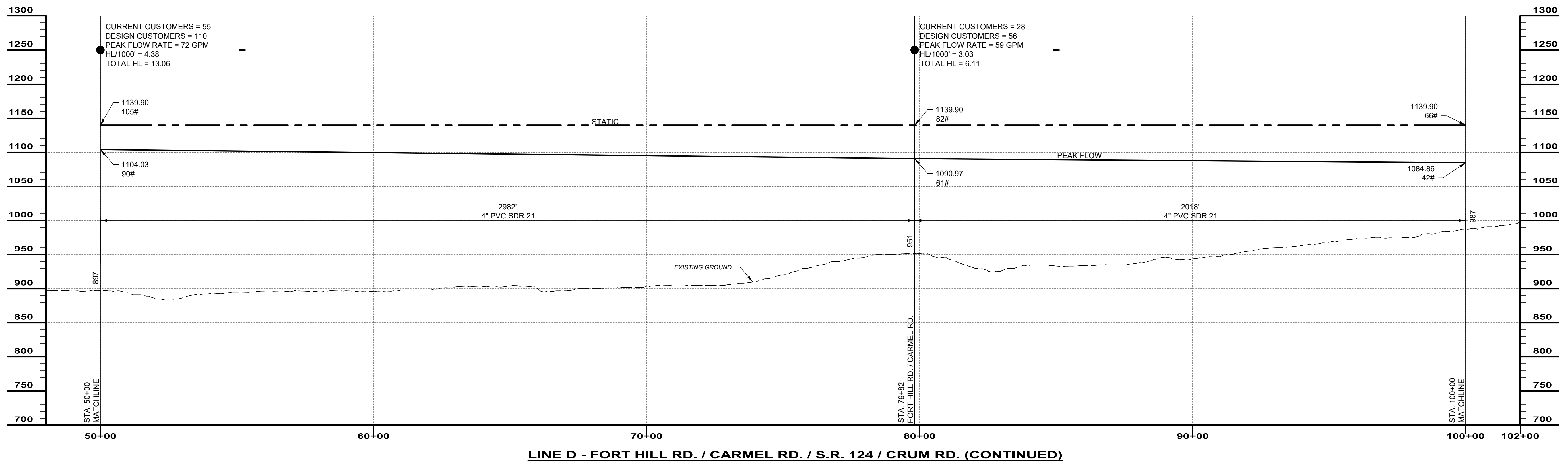
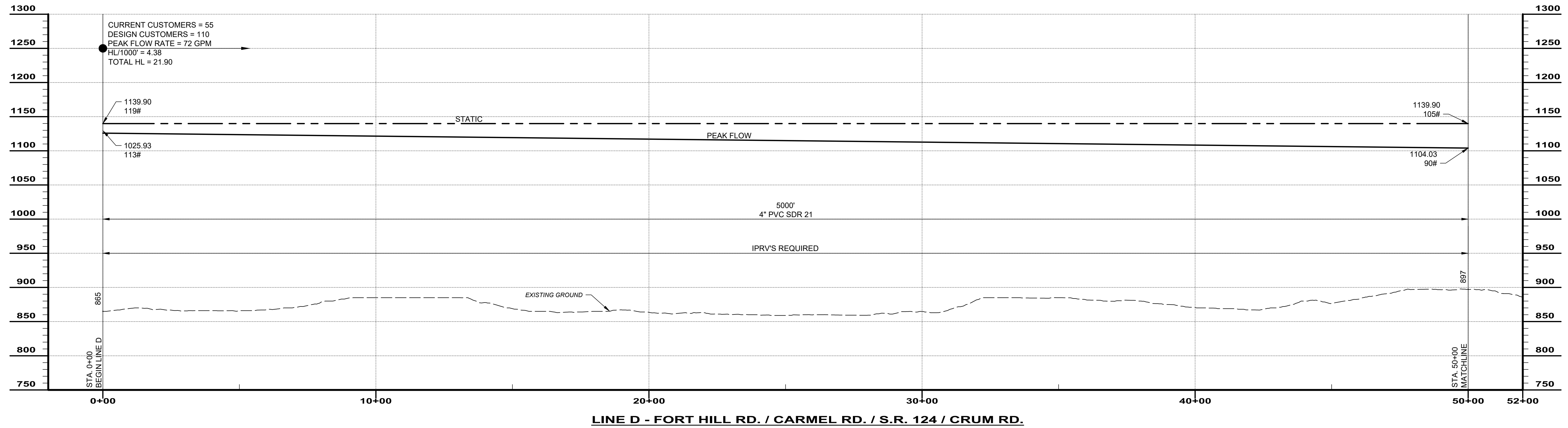


ISSUED FOR:	DATE	REVISION	NO	ALIGNMENT REVISIONS
OEPA REVIEW	4/3/20		1	
ISSUE DATE:	1/18/19	AS SHOWN		
SCALE:		BRA		
DESIGNED BY:		ISC		
DRAWN BY:		BRA		
CHECKED BY:				

**HIGHLAND/PIKE
 WATERLINE EXTENSION
 HIGHLAND & PIKE COUNTY, OHIO**

LINE A & LINE C

PROJECT NO.	180735
DISCIPLINE	CIVIL
SHEET NAME	02C-02
SHEET	20
OF	25

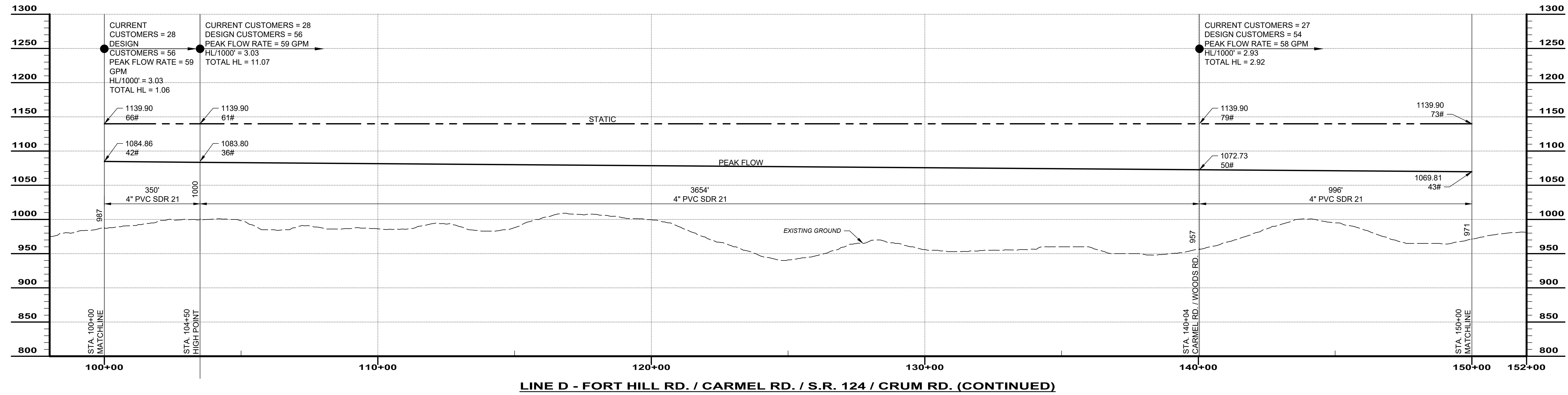


ISSUED FOR:	DATE	REVISION	NO
OEPA REVIEW	1/18/19	ALIGNMENT REVISIONS	1
ISSUE DATE:	4/3/20		
SCALE:	AS SHOWN		
DESIGNED BY:	BRA		
DRAWN BY:	ISC		
CHECKED BY:	BRA		

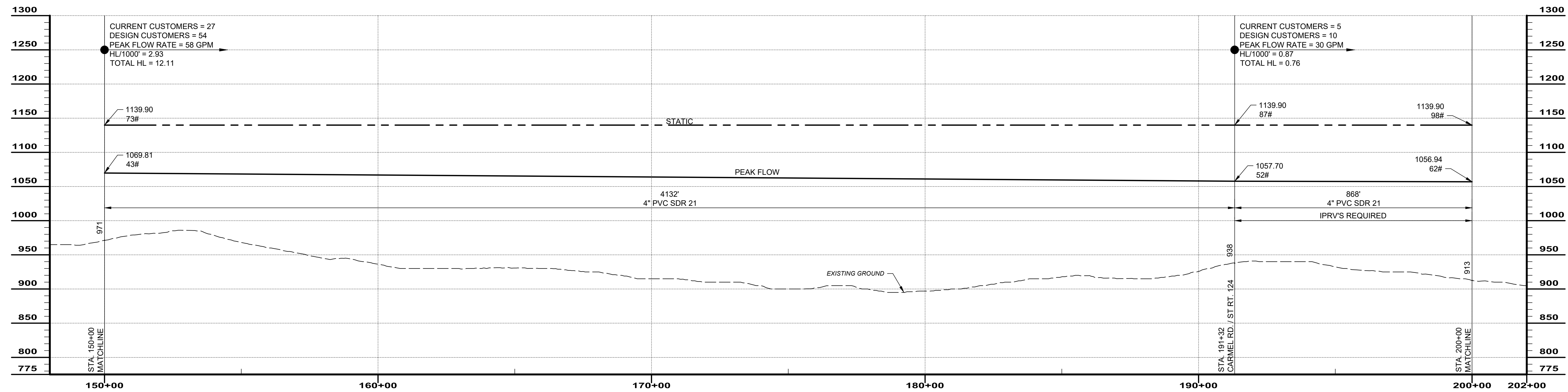
HIGHLAND/PIKE
WATERLINE EXTENSION
 HIGHLAND & PIKE COUNTY, OHIO

LINE D

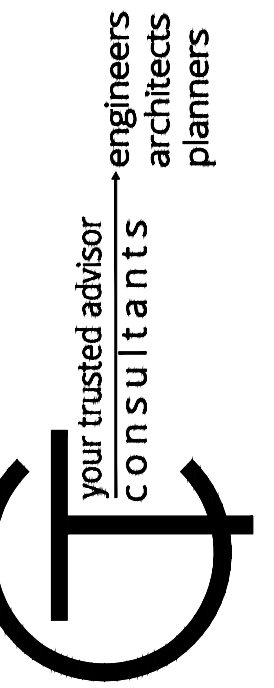
PROJECT NO.	180735
DISCIPLINE	CIVIL
SHEET NAME	02C-03
SHEET	21
OF	25



LINE D - FORT HILL RD. / CARMEL RD. / S.R. 124 / CRUM RD. (CONTINUED)



LINE D - FORT HILL RD. / CARMEL RD. / S.R. 124 / CRUM RD. (CONTINUED)

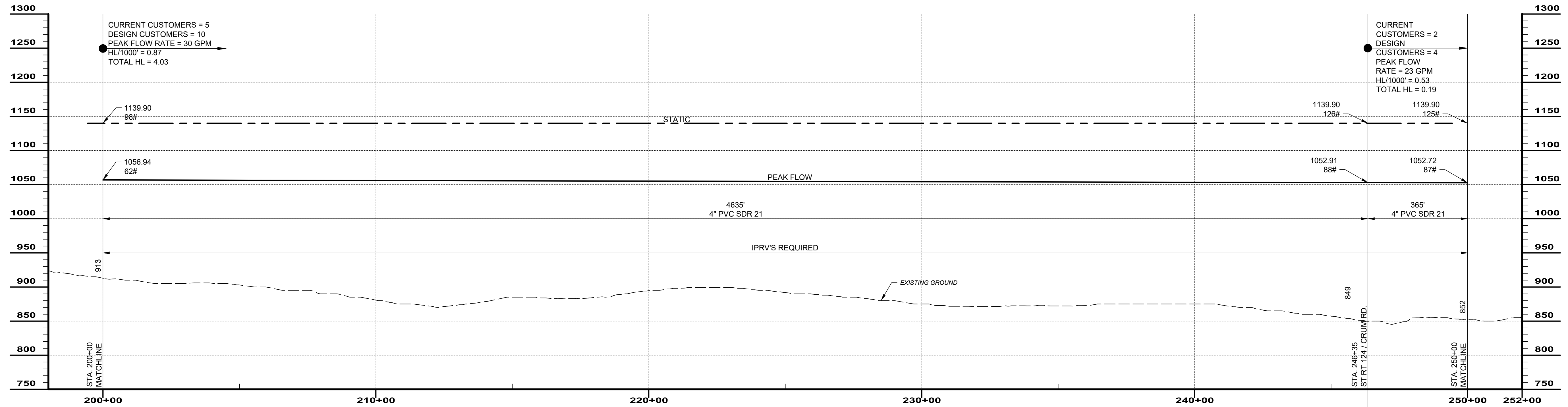


ISSUED FOR:	DATE	REVISION	NO
OEPA REVIEW	4/3/20	ALIGNMENT REVISIONS	1
ISSUE DATE:	1/18/19	SCALE:	AS SHOWN
DESIGNED BY:	BRA	DRAWN BY:	ISC
CHECKED BY:	BRA		

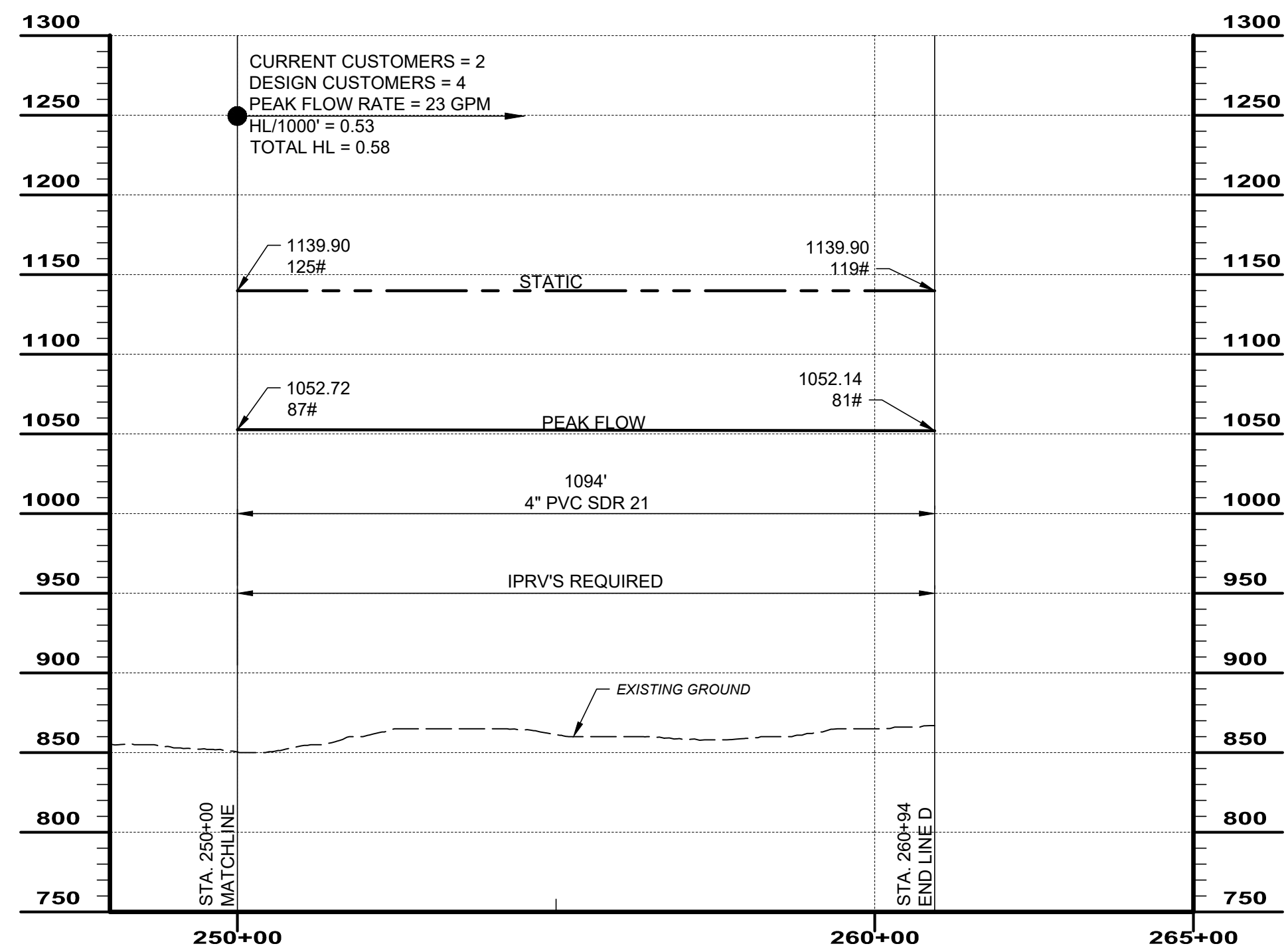
**HIGHLAND/PIKE
WATERLINE EXTENSION**
HIGHLAND & PIKE COUNTY, OHIO

LINE D (CONT.)

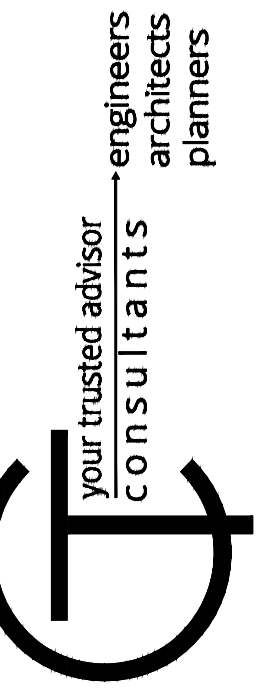
PROJECT NO.	180735
DISCIPLINE	CIVIL
SHEET NAME	02C-04
SHEET	22
OF	25



LINE D - FORT HILL RD. / CARMEL RD. / S.R. 124 / CRUM RD. (CONTINUED)



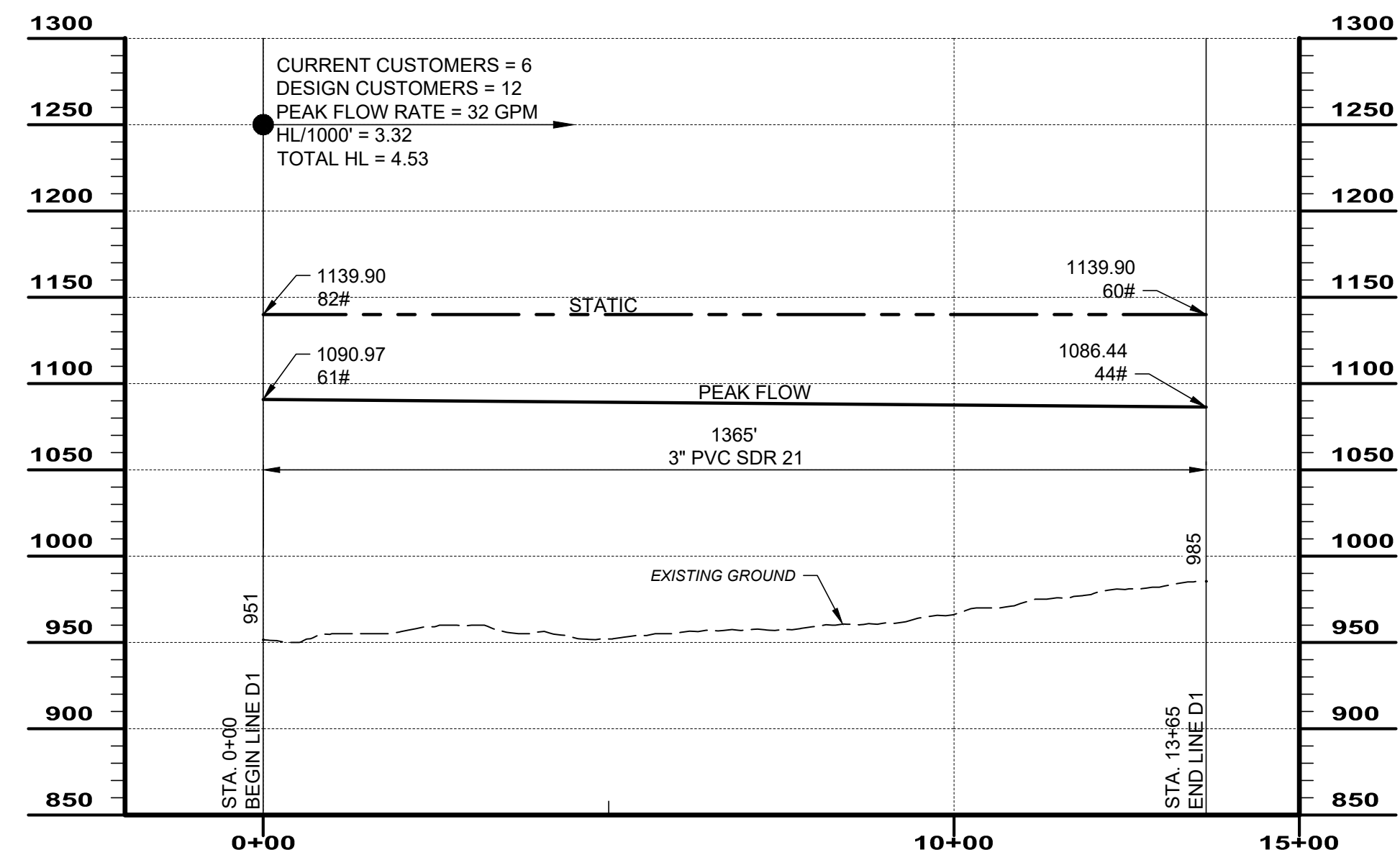
LINE D - FORT HILL RD. / CARMEL RD. / S.R. 124 / CRUM RD. (CONTINUED)



ISSUED FOR:	DATE	REVISION	NO
OEPA REVIEW	1/18/19	ALIGNMENT REVISIONS	1
ISSUE DATE:	4/3/20		
SCALE:	AS SHOWN		
DESIGNED BY:	BRA		
DRAWN BY:	ISC		
CHECKED BY:	BRA		

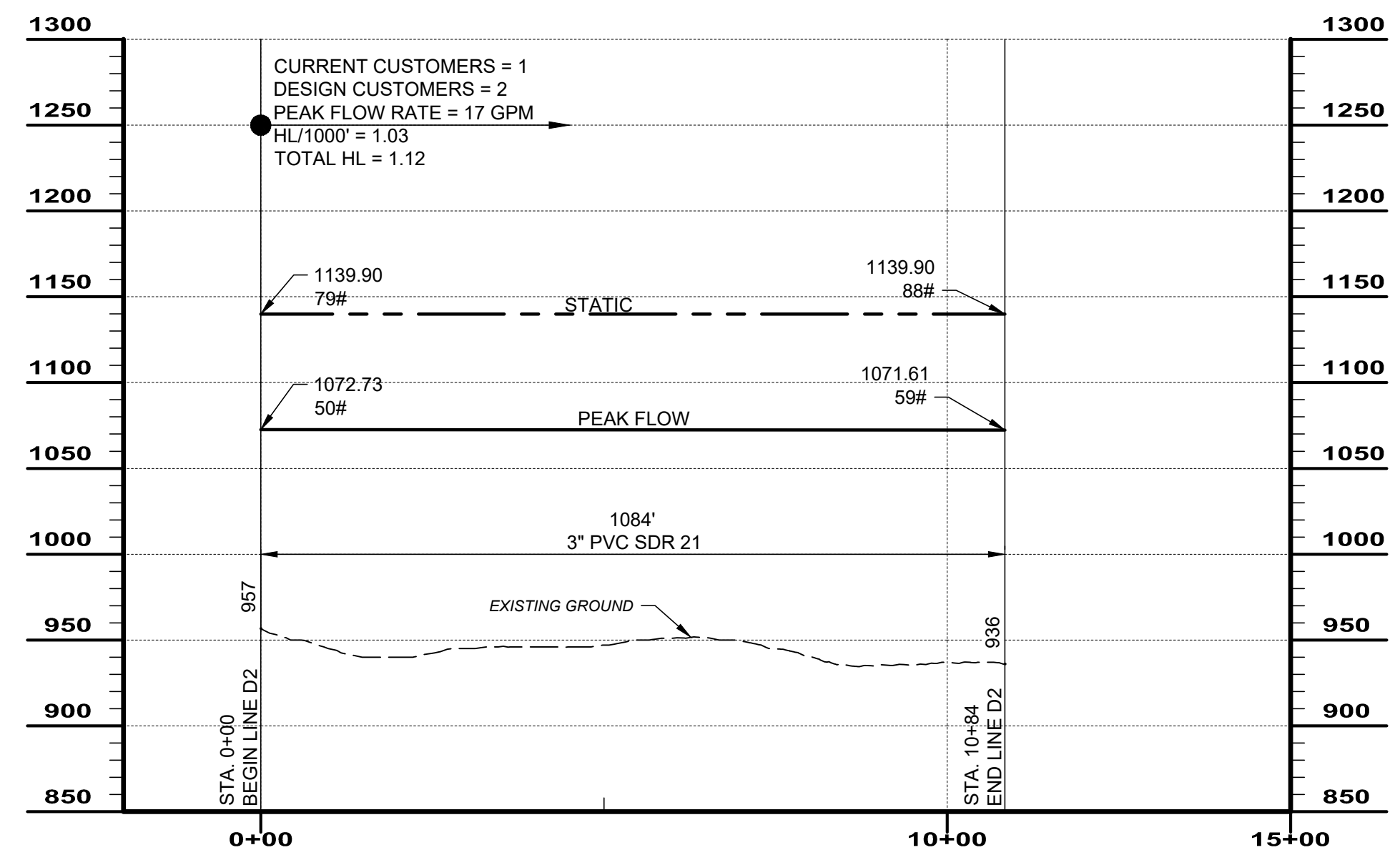
HIGHLAND/PIKE
WATERLINE EXTENSION
 HIGHLAND & PIKE COUNTY, OHIO
LINE D (CONT. 2)

PROJECT NO.	180735
DISCIPLINE	CIVIL
SHEET NAME	02C-05
SHEET	23
OF	25

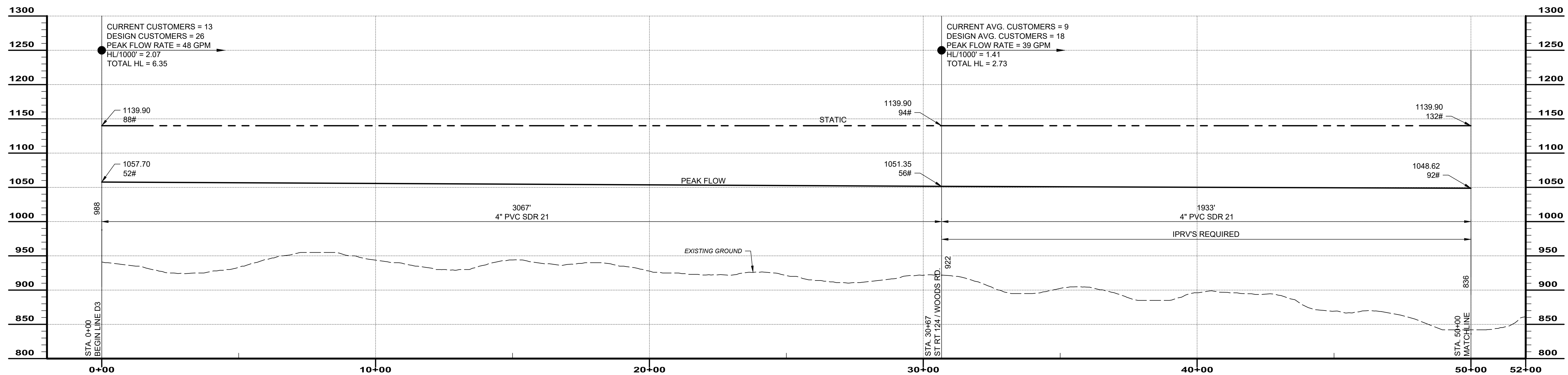


LINE D-1 - CARMEL RD.

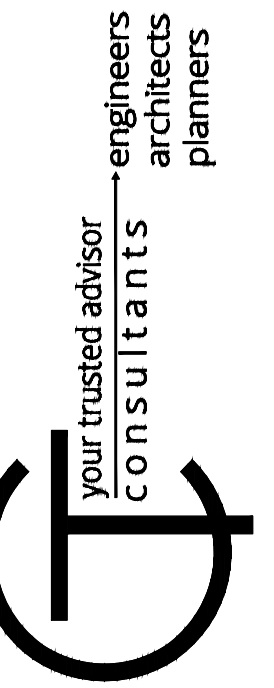
NOTE:
 STATIC HGL NOTED IS BASED UPON PUMPING HGL FROM DRY BONE BOOSTER TO THE SINKING SPRING TANK.



LINE D-2 - WOODS RD.



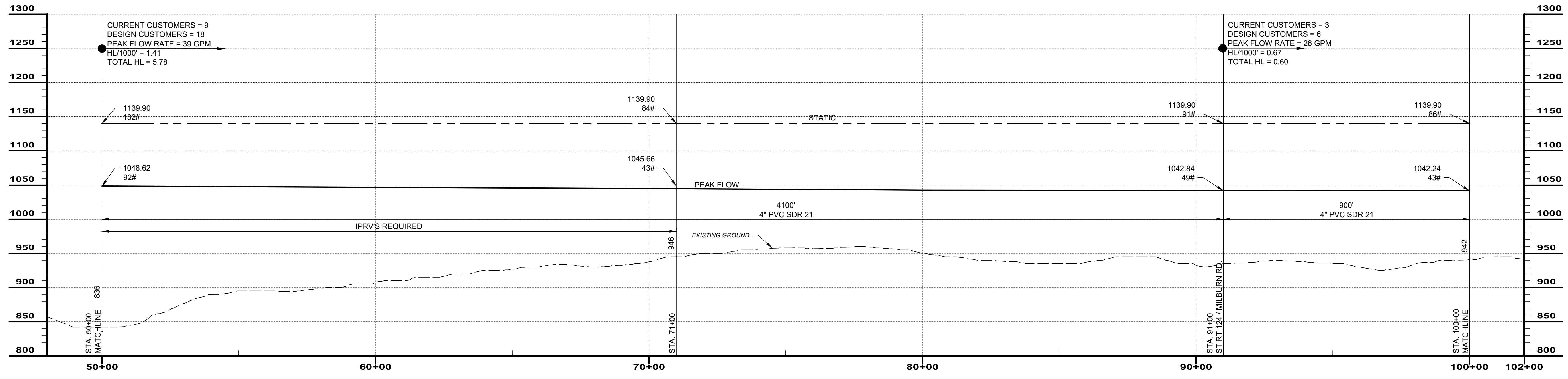
LINE D-3 - S.R. 124 (W. FROM CARMEL RD.)



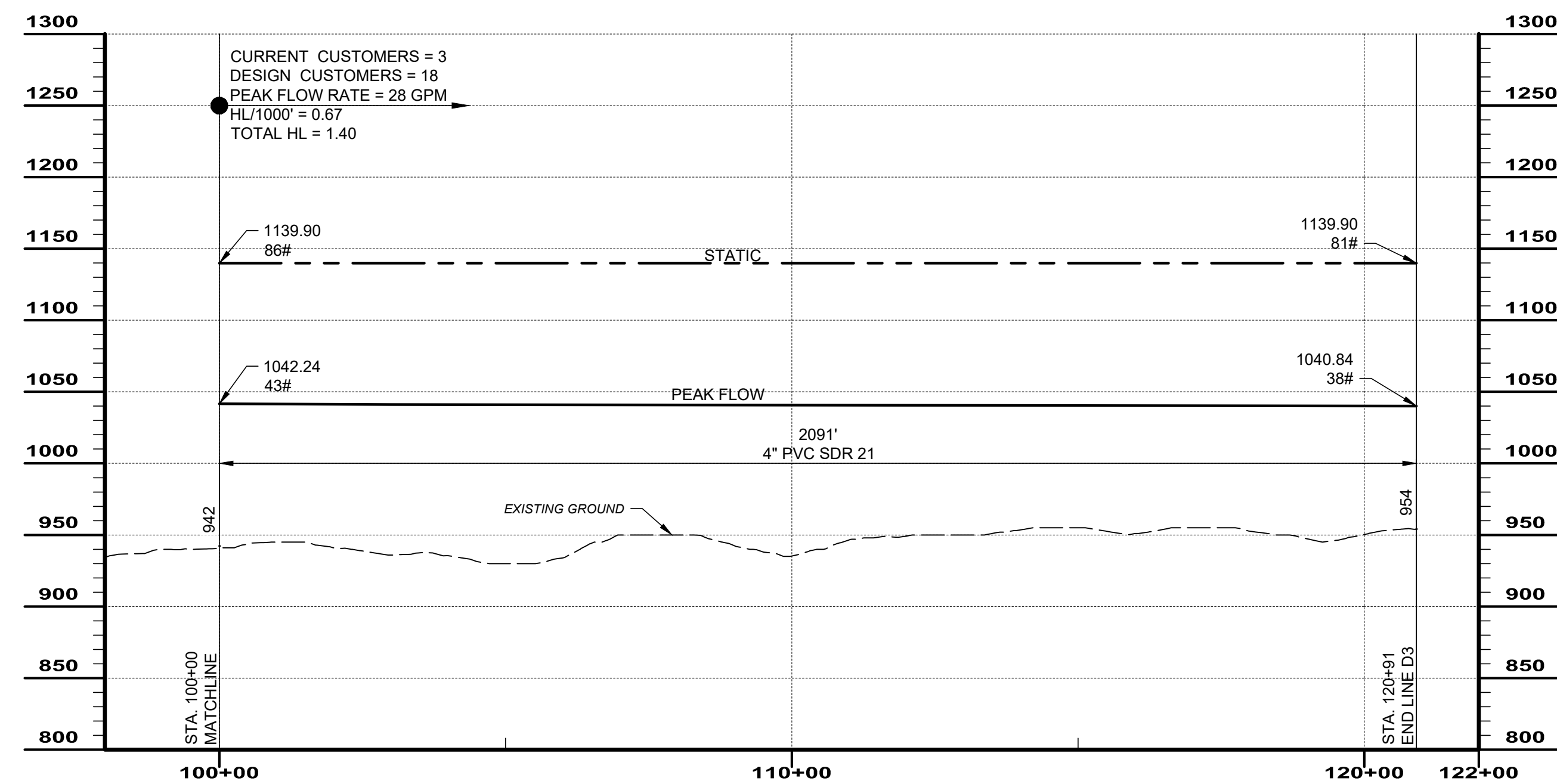
ISSUED FOR:	DATE	REVISION	NO	ALIGNMENT REVISIONS
OEPA REVIEW	1/18/19		1	
ISSUE DATE:	4/3/20			
SCALE:	AS SHOWN			
DESIGNED BY:	BRA			
DRAWN BY:	ISC			
CHECKED BY:	BRA			

HIGHLAND/PIKE
WATERLINE EXTENSION
 HIGHLAND & PIKE COUNTY, OHIO
LINE D-1, LINE D-2 & LINE D-3

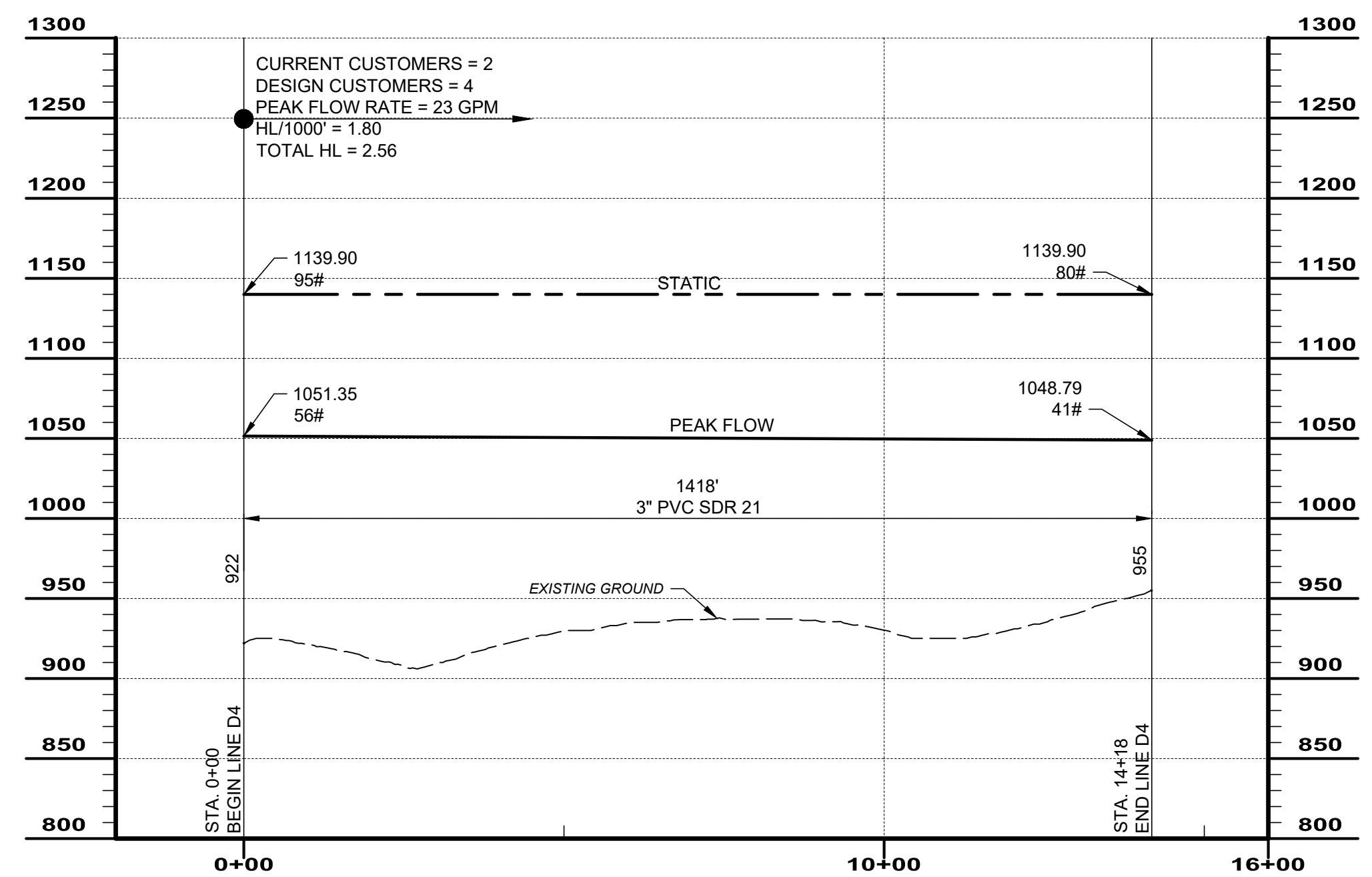
PROJECT NO.	180735
DISCIPLINE	CIVIL
SHEET NAME	02C-06
SHEET	24
OF	25



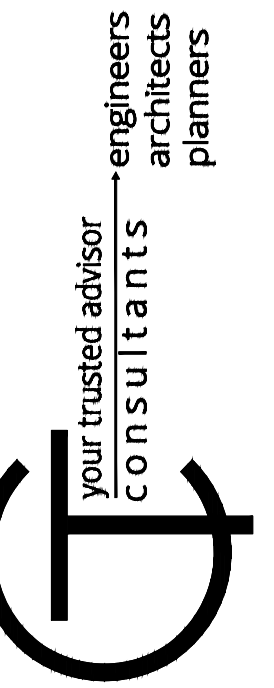
LINE D-3 - S.R. 124 (W. FROM CARMEL RD.) (CONTINUED)



LINE D-3 - S.R. 124 (W. FROM CARMEL RD.) (CONTINUED)



LINE D-4 - WOODS RD. (N. FROM S.R. 124)



ISSUED FOR:	DATE	REVISION	NO
OEPA REVIEW	4/3/20	ALIGNMENT REVISIONS	1
ISSUE DATE:	1/18/19	SCALE:	AS SHOWN
DESIGNED BY:	BRA	DRAWN BY:	ISC
CHECKED BY:	BRA		

**HIGHLAND/PIKE
WATERLINE EXTENSION
HIGHLAND & PIKE COUNTY, OHIO
LINE D-3 (CONT.) & LINE D-4**

PROJECT NO.	180735
DISCIPLINE	CIVIL
SHEET NAME	02C-07
SHEET	25
OF	25

H:\180735\DWG\HETS\180735 - HYDRAULIC PROFILES.DWG - LINE D3 (CONT.) & D4 - 4/10/2020 11:37:23 AM - ADAM DAWSON