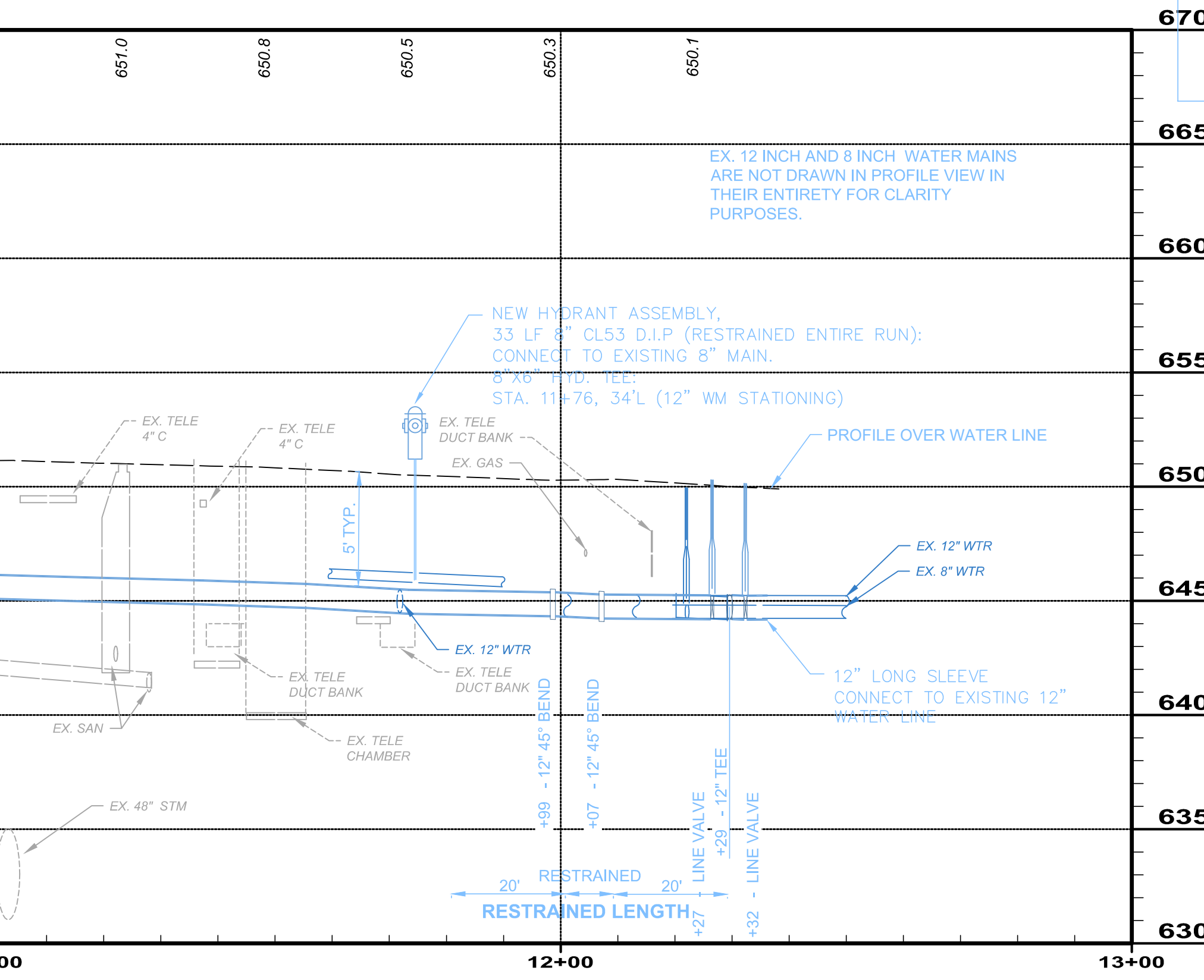
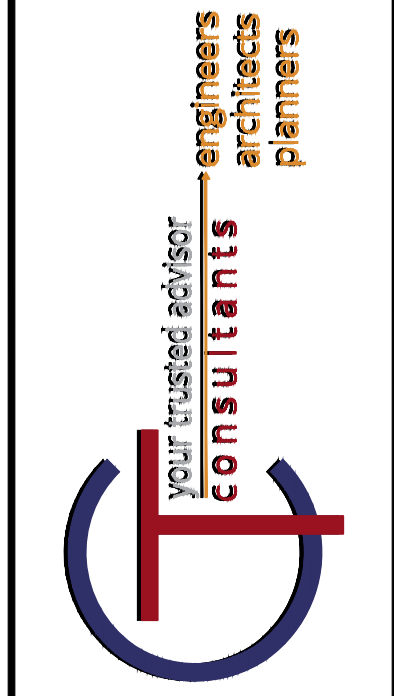
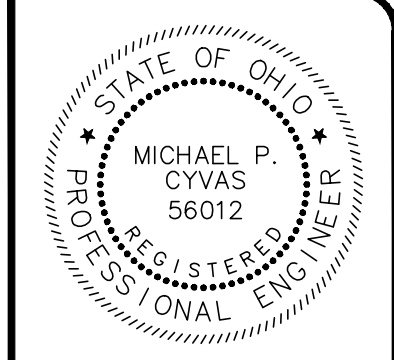
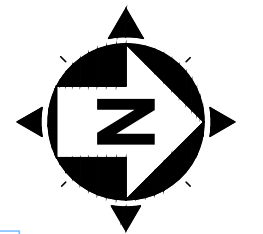
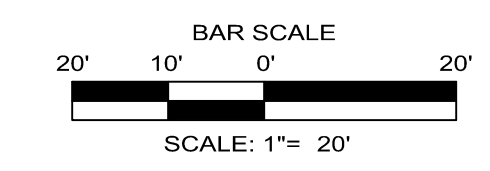


**LEGEND:**

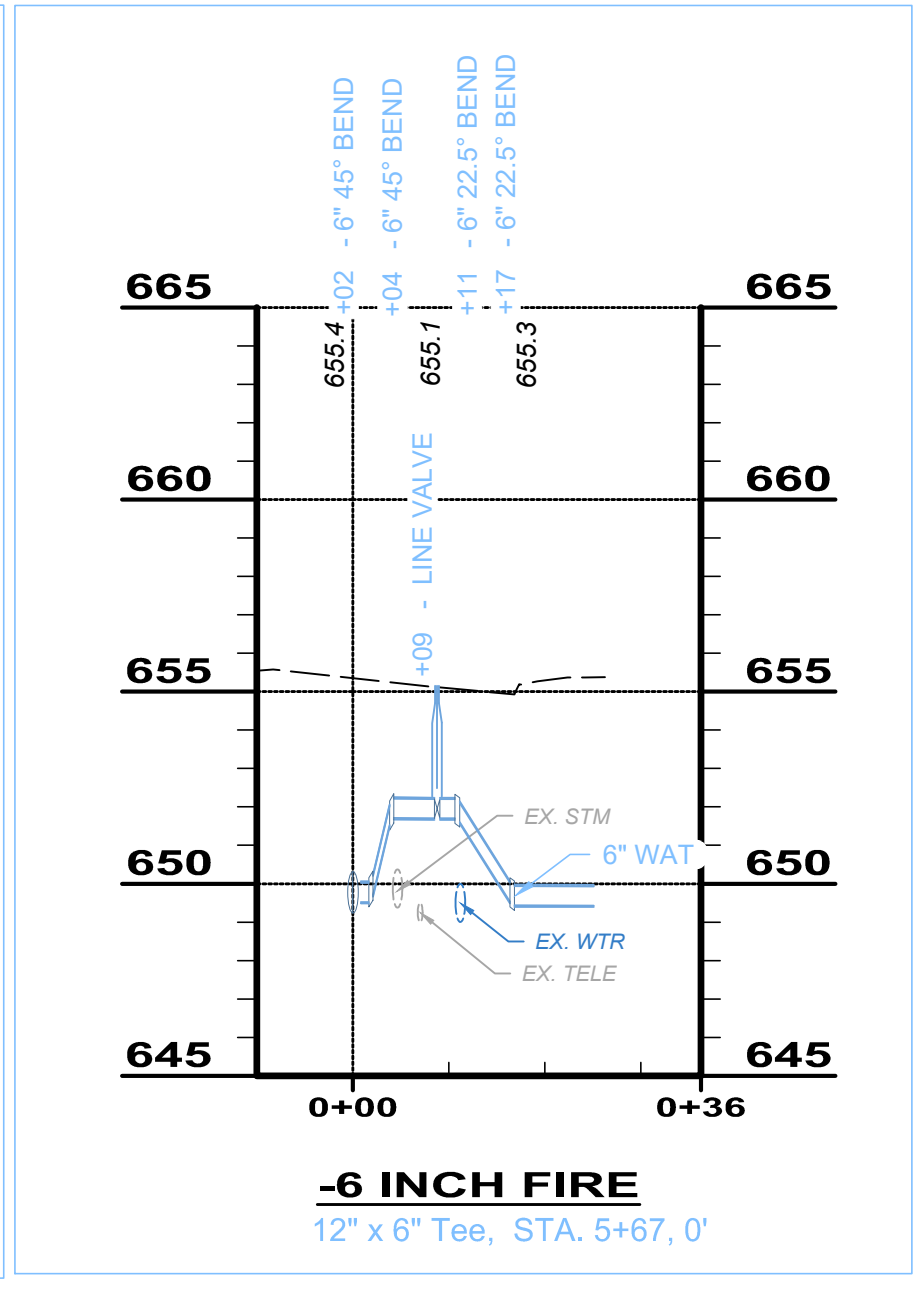
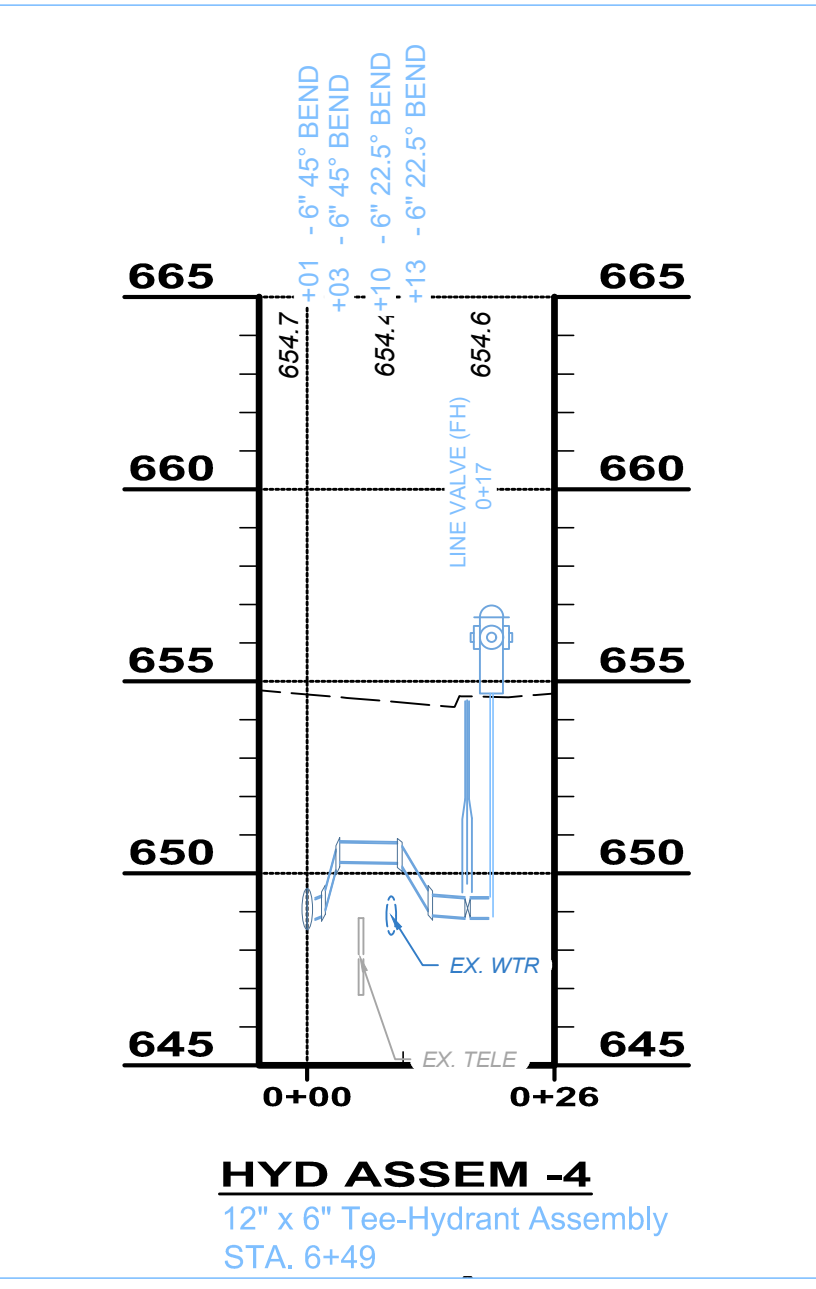
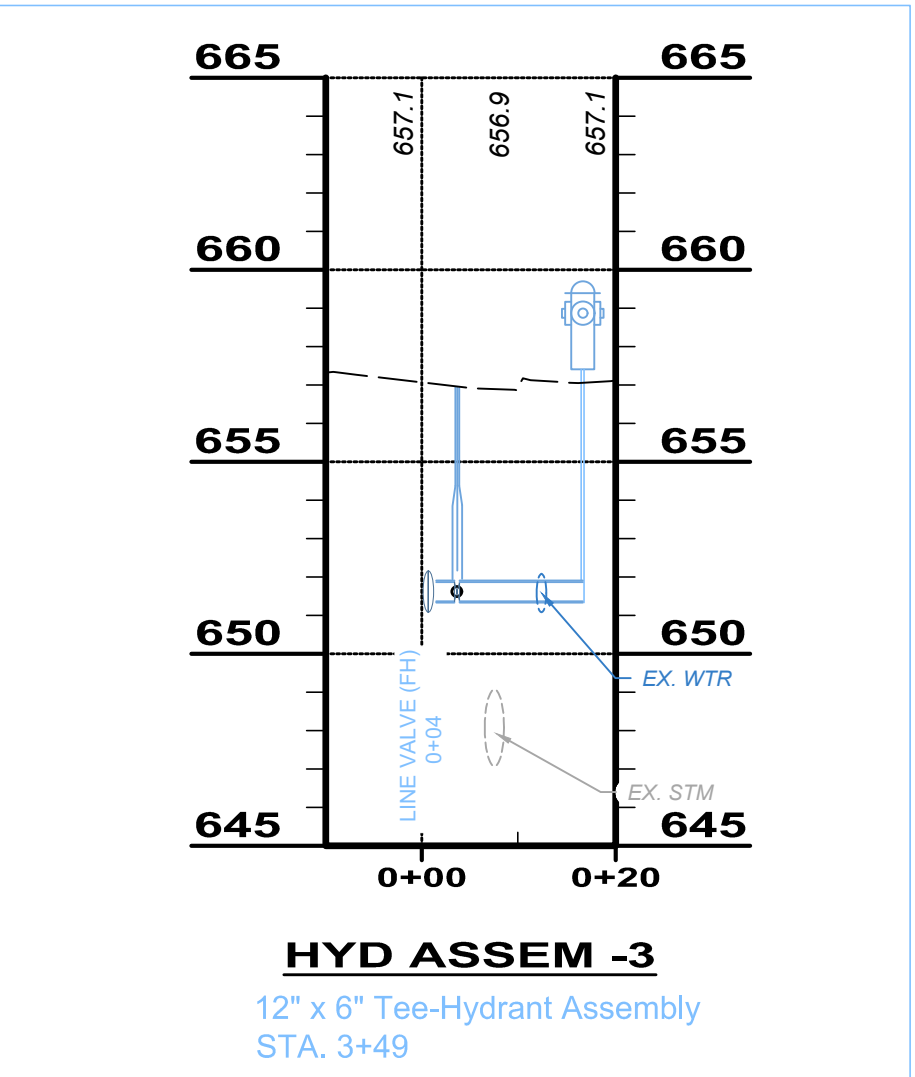
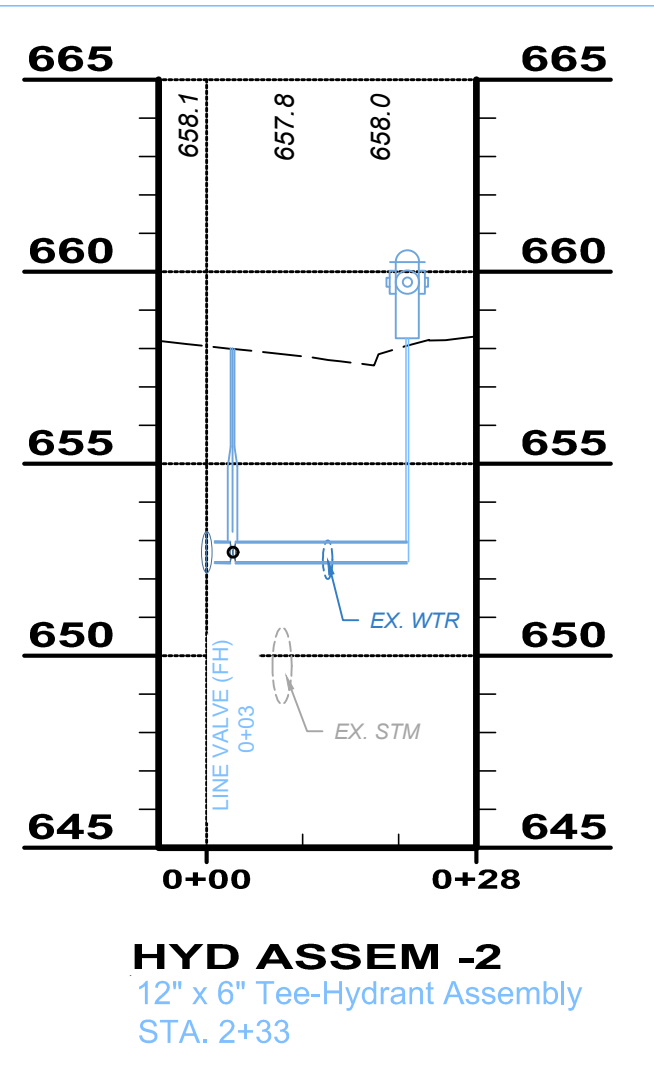
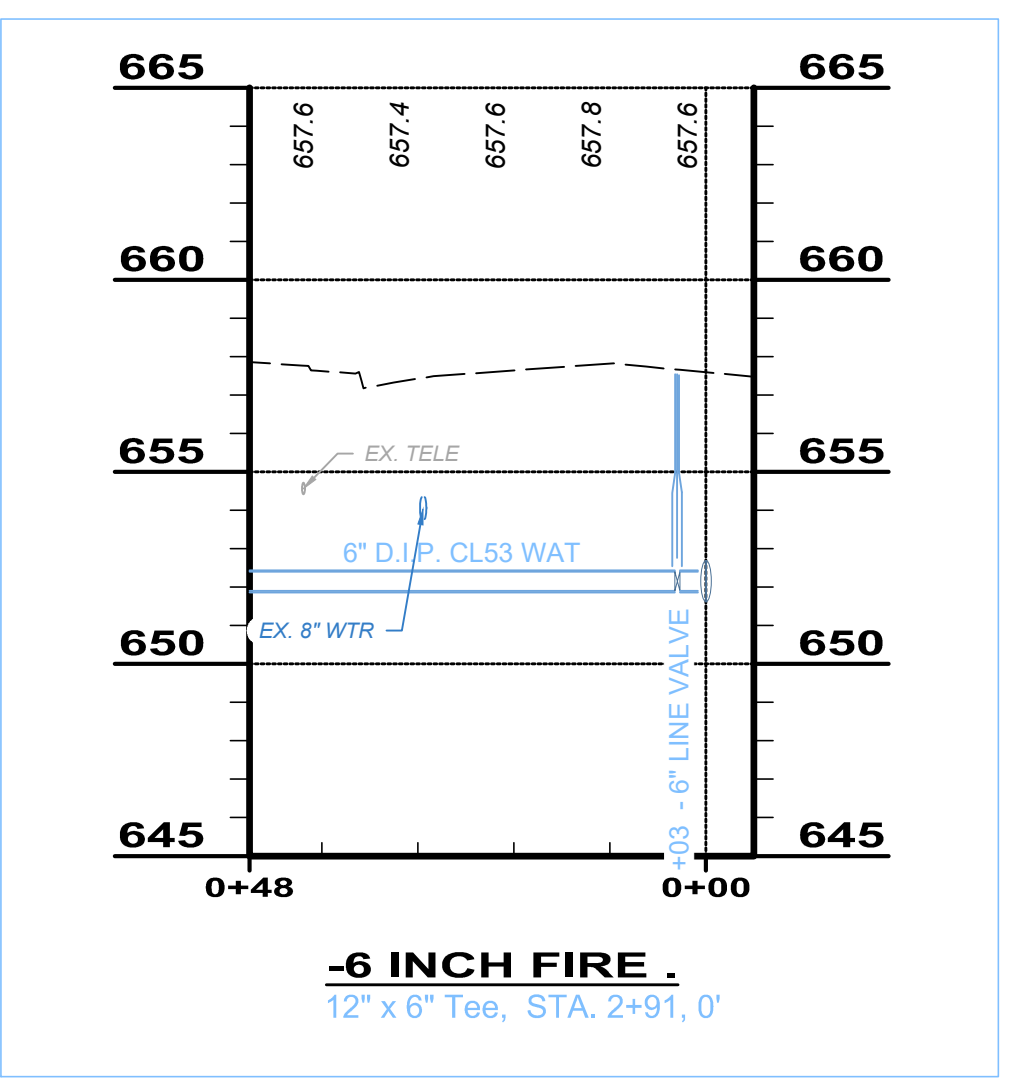
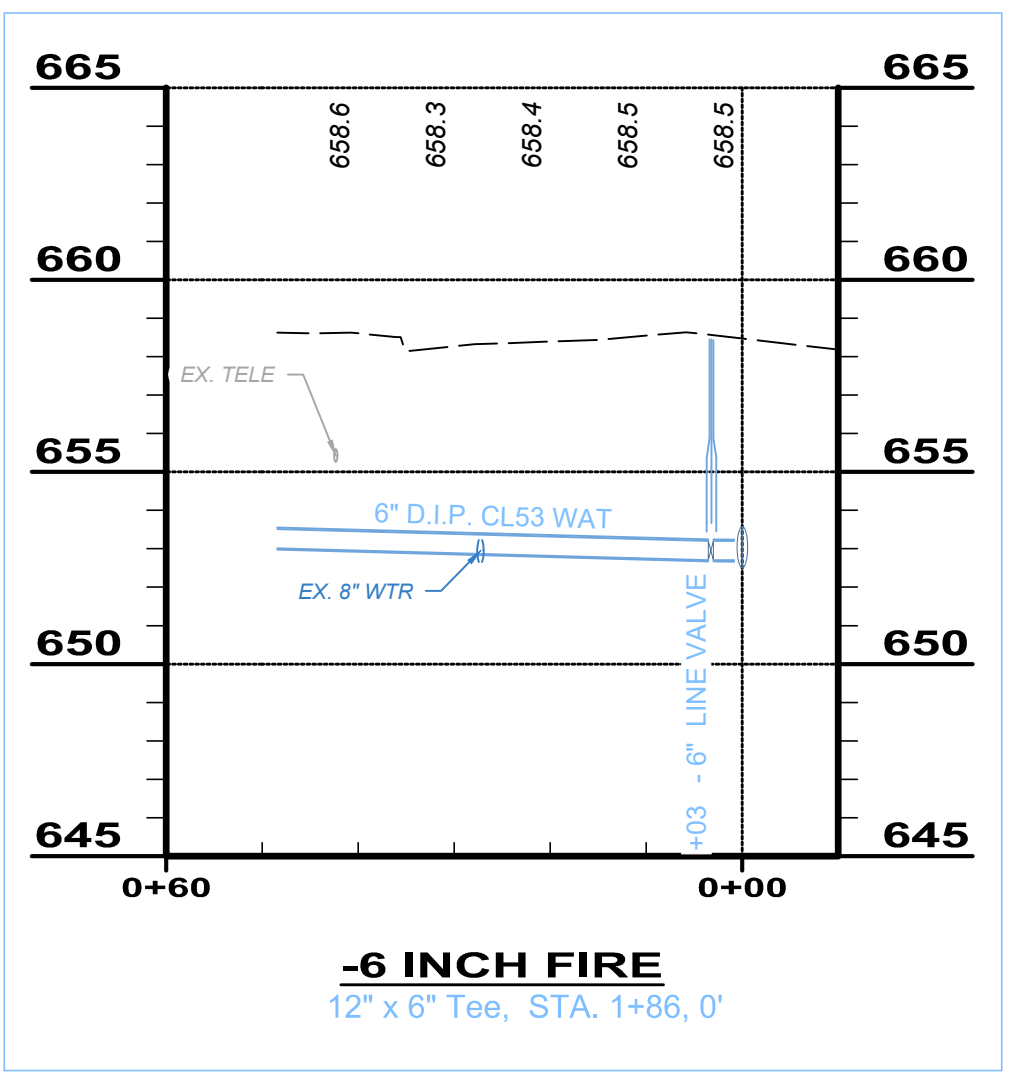
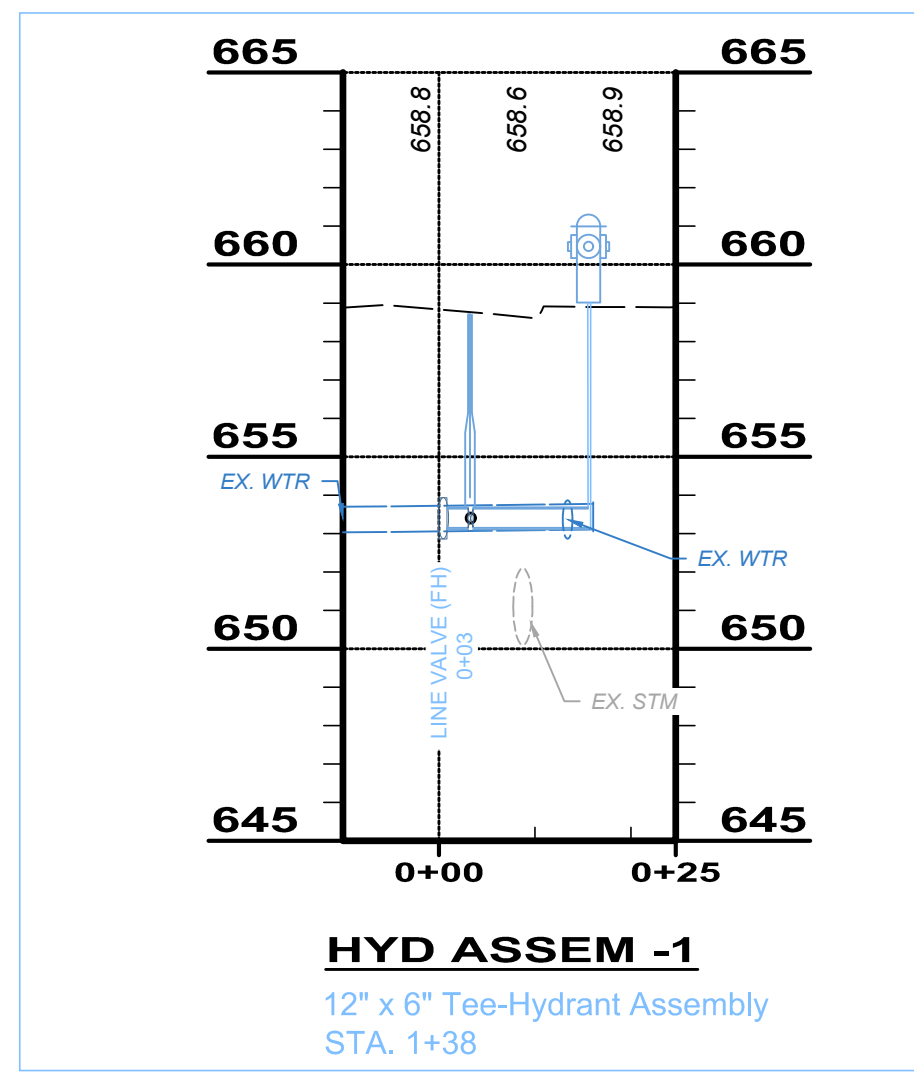
- TYPE "C" PAVEMENT REPLACEMENT
- SIDEWALK REPLACEMENT AREA (BRICK OR CONCRETE)



EX. 12 INCH AND 8 INCH WATER MAINS ARE NOT DRAWN IN PROFILE VIEW IN THEIR ENTIRETY FOR CLARITY PURPOSES.

NEW HYDRANT ASSEMBLY, 33 LF 8" CL53 D.I.P. (RESTRAINED ENTIRE RUN): CONNECT TO EXISTING 8" MAIN. STA. 11+76, 34'L (12" WM STATIONING)

20' RESTRAINED LENGTH  
 20' RESTRAINED LENGTH  
 20' RESTRAINED LENGTH



**FIRE LINE (S)**

- CONTRACTOR SHALL VERIFY UTILITY ELEVATIONS AT CROSSINGS AND DEFLECT WATERLINE AS NECESSARY TO MAINTAIN A MINIMUM CLEARANCE 18 INCHES. PIPE SHALL BE REDUCED TO FIRE LINE SERVICE LINE SIZE AT BUILDING WALL OR LINE VALVE. 12"x6" ANCHOR TEES SHALL BE PROVIDED ON FIRELINE RUNS.

**HYDRANT ASSEMBLIES**

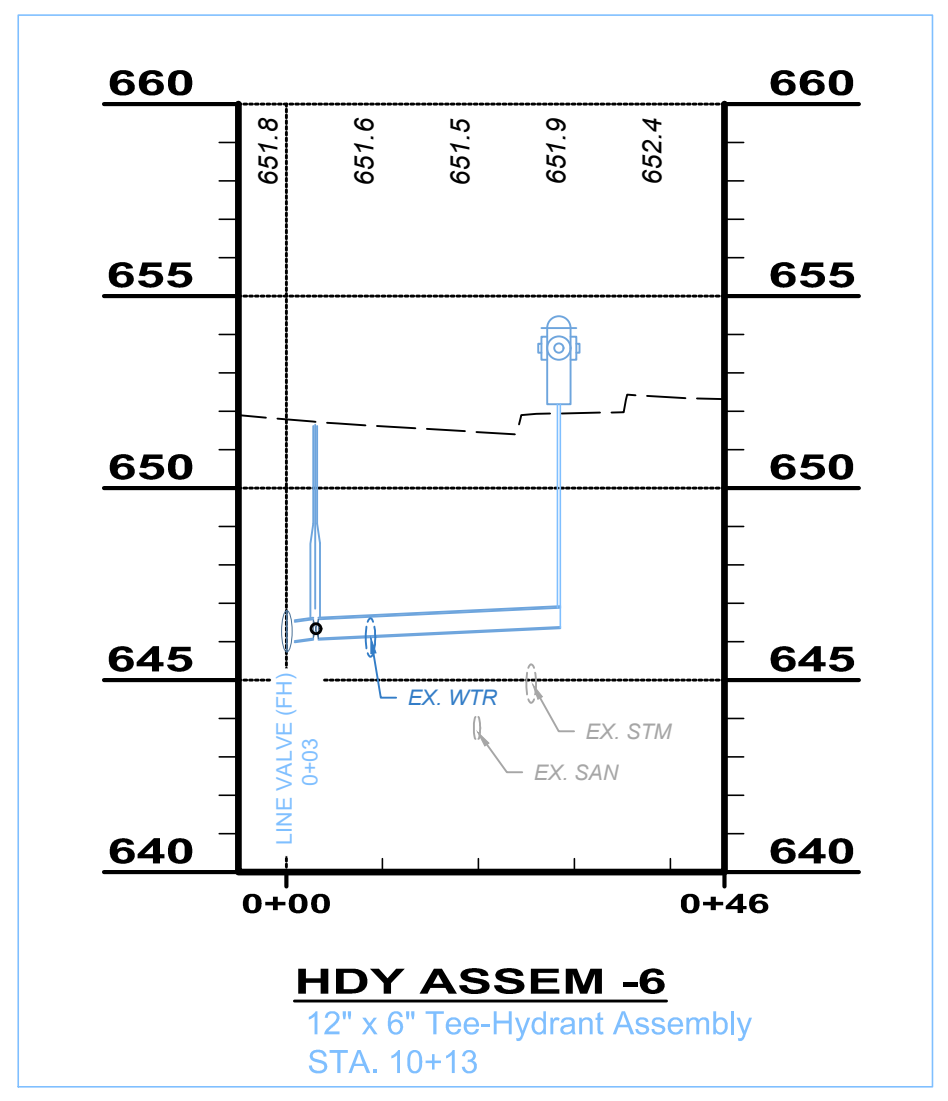
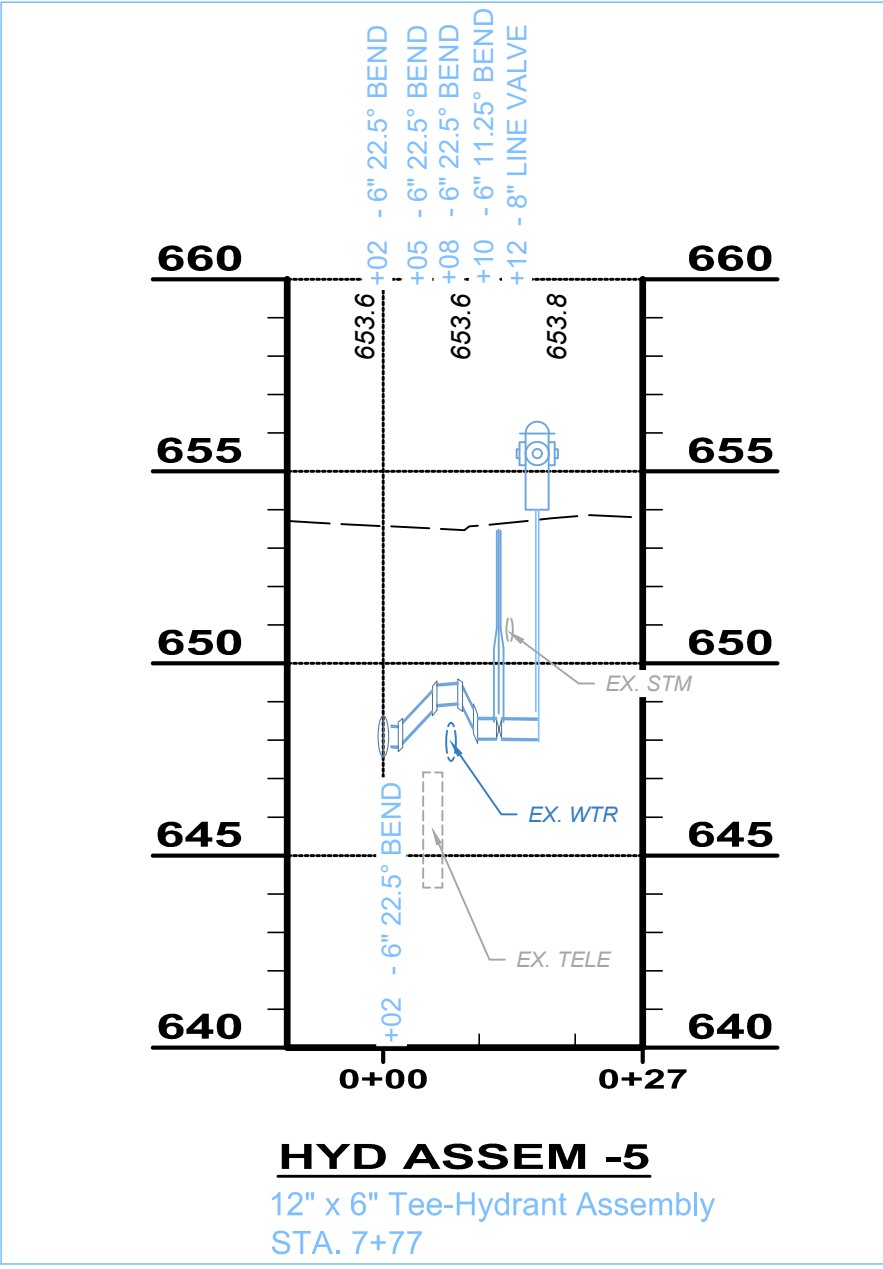
- ALL HYDRANTS ASSEMBLIES & FIRE LINES SHALL UTILIZE BOLTLESS RESTRAINTS

**DRAWING PROFILE WRITTEN NOTES:**

- CONTRACTOR SHALL VERIFY UTILITY ELEVATIONS AT CROSSINGS AND DEFLECT WATERLINE AS NECESSARY TO MAINTAIN A MINIMUM CLEARANCE 18 INCHES. MAXIMUM PIPE DEFLECTION OF THE WATERLINE SHALL BE 15" PER FULL PIPE LENGTH. IN LIEU OF PIPE DEFLECTION, 12" X 11.25", 22.5", 45" BENDS MAY BE USED. RESTRAINT LENGTHS HAVE BEEN SHOWN FOR THE 3 FITTINGS AND SHALL APPLY BASED ON CONTRACTORS USE OF BENDS.

**DRAWING PLAN WRITTEN NOTES:**

- AT LOCATIONS WHERE THE PROPOSED 12" WATERLINE CONNECTS TO THE EXISTING WATERMAIN, CONTRACTOR SHALL PERFORM EXPLORATORY EXCAVATIONS TO EXPOSE/INVESTIGATE THE TIE-IN LOCATIONS. CONTRACTOR SHALL NOTIFY THE ENGINEER OF ANY POSSIBLE CONFLICTS. AT THIS TIME THE ENGINEER SHALL ADJUST THE LOCATION OF THE TIE-IN AND NO ADDITIONAL COST OR DEDUCTION SHALL BE ADDED TO THE CONTRACT.



DATE	REVISION	NO	ISSUED FOR: UTILITY COORD.	ISSUE DATE:	SCALE:	DESIGNED BY:	DRAWN BY:	CHECKED BY:
XXXX18		A	08/28/18	AS SHOWN	MPC	MPC/JPL		XXX

**ERIE STREET WATER LINE REPLACEMENT OF UTILITIES - WILLOUGHBY -**

**PLAN & PROFILE**

**STA. 11+00 TO END**

PROJECT NO.	180608
DISCIPLINE	CIVIL
SHEET NAME	PP-04
SHEET	8
OF	20