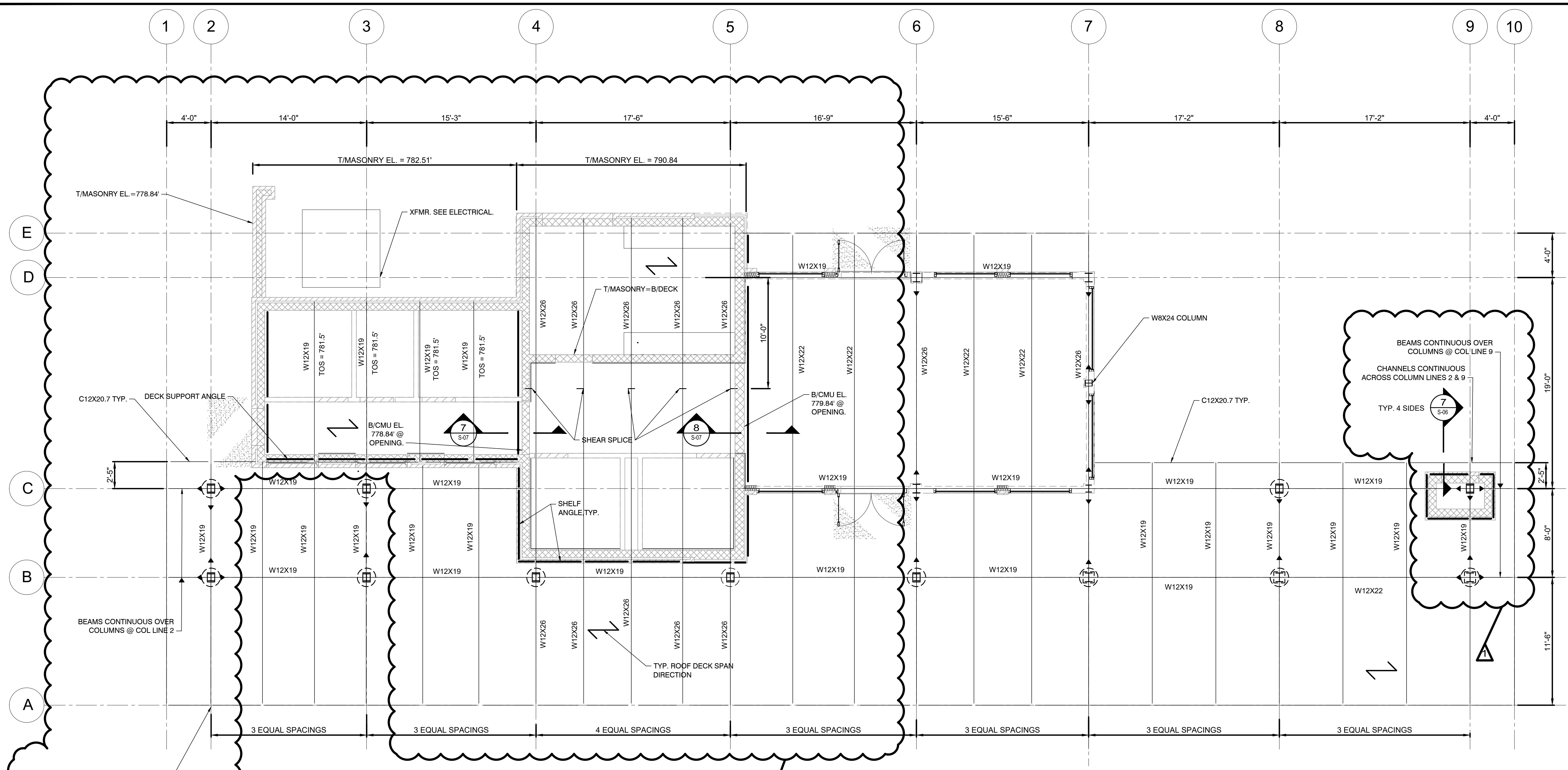


ISSUED FOR:	CD	NO	DATE	REVISION
LAKELAND TRANSFER CENTER	8/5/19	1	8/5/19	REBID
ISSUE DATE:	AS SHOWN	AP	DESIGNED BY:	AP
SCALE:	AP	PCP	DRAWN BY:	PCP
CHECKED BY:				

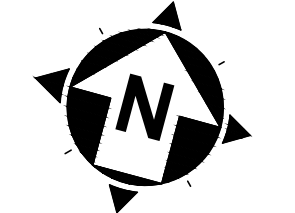
LAKELAND TRANSFER CENTER
LAKELAND COMMUNITY COLLEGE
 7601 CLOCKTOWER DR., KIRTLAND, OH 44094

PROJECT NO.
18050002
 DISCIPLINE
STRUCTURAL
 SHEET NAME
S-09
 SHEET OF
45 55

FRAMING PLAN & SCHEDULE



ROOF FRAMING PLAN
 SCALE: 1" = 5'-0"



COLUMN & BASEPLATE SCHEDULE						
LOCATION	SIZE	TOP/ CONC. PIER (FT)	BASEPLATE	BOTTOM/ BP	ANCHOR BOLT	WELD SIZE
2-B	W8X24	773.51	10" X 8 1/2" X 3/4"	3'-9"	(4) 3/4" Ø W/ 12" EMBED.	3/16"
3-B	W8X24	773.51	10" X 8 1/2" X 3/4"	3'-9"	(4) 3/4" Ø W/ 12" EMBED.	3/16"
4-B	W8X24	773.51	10" X 8 1/2" X 3/4"	3'-9"	(4) 3/4" Ø W/ 12" EMBED.	3/16"
5-B	W8X24	773.51	10" X 8 1/2" X 3/4"	3'-9"	(4) 3/4" Ø W/ 12" EMBED.	3/16"
6-B	W8X24	773.51	10" X 8 1/2" X 3/4"	3'-9"	(4) 3/4" Ø W/ 12" EMBED.	3/16"
7-B	W10X33	773.51	12" X 10" X 3/4"	3'-9"	(4) 3/4" Ø W/ 12" EMBED.	3/16"
8-B	W10X33	773.51	12" X 10" X 3/4"	3'-9"	(4) 3/4" Ø W/ 12" EMBED.	3/16"
9-B	W10X33	773.51	12" X 10" X 3/4"	3'-9"	(4) 3/4" Ø W/ 12" EMBED.	3/16"
2-C	W8X24	773.51	10" X 8 1/2" X 3/4"	3'-9"	(4) 3/4" Ø W/ 12" EMBED.	3/16"
3-C	W8X24	773.51	10" X 8 1/2" X 3/4"	3'-9"	(4) 3/4" Ø W/ 12" EMBED.	3/16"
6-C	W10X33	768.84	12" X 10" X 3/4"	-0'-11"	(4) 3/4" Ø W/ 12" EMBED.	3/16"
7-C	W8X24	768.84	10" X 8 1/2" X 3/4"	-0'-11"	(4) 3/4" Ø W/ 12" EMBED.	3/16"
8-C	W8X24	773.51	10" X 8 1/2" X 3/4"	3'-9"	(4) 3/4" Ø W/ 12" EMBED.	3/16"
9-C	W8X24	770.34	10" X 8 1/2" X 3/4"	0'-7"	(4) 3/4" Ø W/ 12" EMBED.	3/16"
6-D	W10X45	768.84	12" X 10" X 3/4"	-0'-11"	(4) 3/4" Ø W/ 12" EMBED.	1/4"
7-D	W10X45	768.84	12" X 10" X 3/4"	-0'-11"	(4) 3/4" Ø W/ 12" EMBED.	1/4"

- NOTES:**
- TOP OF STEEL ELEVATION IS EL. 786.97' @ COLUMN LINE A UNO. TOP OF STEEL ELEVATION FOR EAST-WEST W12X19 STEEL BEAMS ALONG COLUMN LINES B, C & D IS DIRECTLY UNDER TOP W12 BEAMS. ALL OTHER TOP OF STEEL ELEVATIONS ARE REFERENCED TO 16'-8" AFF.
 - TOP OF STEEL ELEVATION IS EL. 786.73' @ COLUMN LINE B UNO.
 - TOP OF STEEL ELEVATION IS EL. 786.57' @ COLUMN LINE C UNO.
 - TOP OF STEEL ELEVATION IS EL. 786.17' @ COLUMN LINE D UNO.
 - TOP OF STEEL ELEVATION IS EL. 786.09' @ COLUMN LINE E UNO.
 - PROVIDE BOND BEAMS AT TOP OF WALL, AT BEAM BEARING, AND AT 8'-0" AFF.
 - SEE DETAIL 9/S-06 FOR CONNECTIONS BETWEEN COLUMN, BASEPLATE AND CONCRETE PIER.
 - ROOF DECK SHALL BE 1.5" THICK WIDE-RIB 22 GAGE (1.5B22) METAL DECK. SEE 7/S-06 FOR ROOF TO MASONRY WALL CONNECTION DETAIL. SEE ALSO SPECIFICATIONS FOR CONNECTIONS & FASTENING.
 - EVERYTHING ON THIS DRAWING SHALL BE INCLUDED IN THE SCOPE OF THE BUILDING BID PACKAGE, AND ALSO IN THE SCOPE OF THE SITE + BUILDING BID PACKAGE.

- COLUMN AND BASEPLATE SCHEDULE NOTES:**
- BOTTOM/ BP = ELEVATION OF BOTTOM OF BASEPLATE IN REFERENCE TO FINISH FLOOR ELEVATION CONSIDERING 1" NON-SHRINK GROUT
 - FINISH FLOOR ELEVATION IS 769.84'
 - WELD SIZE = FILLET WELD BETWEEN COLUMN AND BASEPLATE ALONG EACH SIDE OF COLUMN WEB. SEE TABLE FOR WELD SIZE