

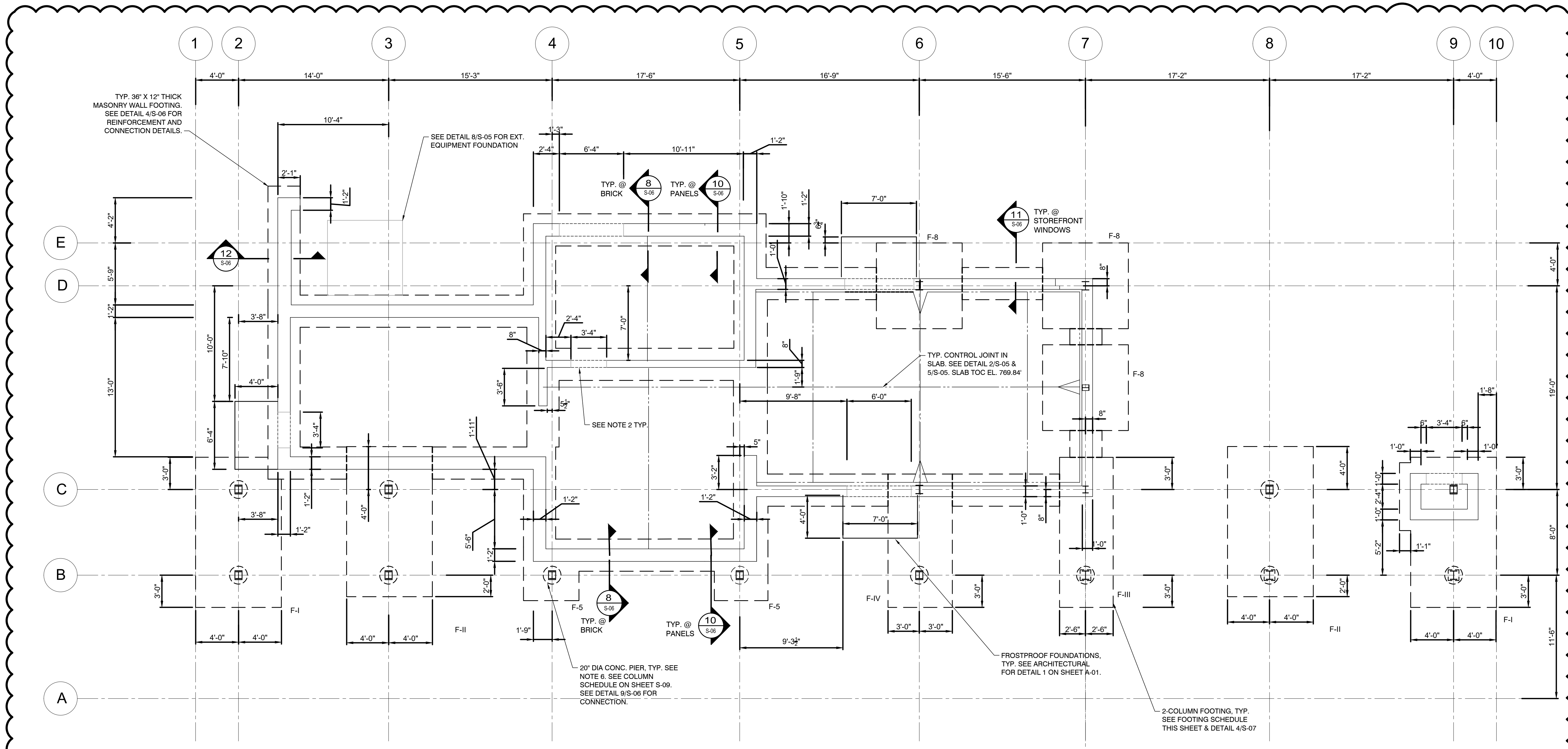
ISSUED FOR:	CD NO	REVISION	DATE
AS SHOWN	1	REBID	8/5/19

ISSUE DATE:	SCALE:	DESIGNED BY:	DRAWN BY:	CHECKED BY:
8/5/19	AS SHOWN	AP	AP	PCP

LAKELAND TRANSFER CENTER
LAKELAND COMMUNITY COLLEGE
 7601 CLOCKTOWER DR., KIRTLAND, OH 44094

PROJECT NO.	18050002
DISCIPLINE	STRUCTURAL
SHEET NAME	S-08
SHEET	44
OF	55

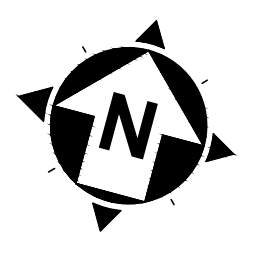
FOUNDATION PLAN & SCHEDULE



NOTES:

- SEE STRUCTURAL GENERAL NOTES AND SPECIFICATIONS FOR ADDITIONAL INFORMATION.
- AT MANDOORS, LOWER FOUNDATION WALL 8" FOR SLAB OVERPOUR
- THIS BUILDING HAS AN INTERIOR 5" THICK SLAB-ON-GRADE WITH WWR 6X6- W2.1XW2.1 ON TOP OF 4" COMPACTED DENSE GRADED AGGREGATE WITH FINES. SEE DETAIL 5/S-05.
- FINISHED FLOOR ELEVATION IS 769.84'
- SEE DETAIL 6/S-05 FOR TYP. TRENCH DRAINS.
- REINFORCE 20" DIA PIERS WITH (10) #5 VERTICAL BARS WITH STANDARD HOOKS AT THE BOTTOM LAYER OF FOOTING REBAR, WITH #3 TIES @ 8" O.C. UNO, AND WITH (3) #3 TIES @ 2" O.C. AT THE TOP OF PIER.
- SEE COLUMN SCHEDULE ON SHEET S-09 FOR SIZES AND LOCATION OF COLUMNS, BASEPLATES AND ANCHOR BOLTS.
- SEE ARCHITECTURAL PLANS & ELEVATIONS FOR LOCATIONS OF BRICK, PANELS & STOREFRONT WINDOWS.
- EVERYTHING ON THIS DRAWING SHALL BE INCLUDED IN THE SCOPE OF THE BUILDING BID PACKAGE, AND ALSO IN THE SCOPE OF THE SITE+BUILDING BID PACKAGE.

FOUNDATION PLAN
 SCALE: 1" = 5'-0"



FOOTING SCHEDULE

MARK	SIZE	DEPTH FTG	BOT REINF.	TOP REINF.
F-5	5 SQ.FT X 1 FT THK	3'-6"	#5 @ 14" O.C. EW	#4 @ 14" O.C. EW
F-8	8 SQ.FT X 1.25 FT THK	3'-6"	#6 @ 14" O.C. EW	#4 @ 14" O.C. EW
F-I	14 FT X 8 FT X 2 FT THK	3'-6"	MAJOR- #7 @ 14" MINOR- #5 @ 14"	#5 @ 14" O.C. EW
F-II	14 FT X 8 FT X 2 FT THK	3'-6"	MAJOR- #7 @ 14" MINOR- #5 @ 14"	#5 @ 14" O.C. EW
F-III	14 FT X 5 FT X 1.5 FT THK	3'-6"	MAJOR- #7 @ 14" MINOR- #5 @ 14"	#4 @ 14" O.C. EW
F-IV	12 FT X 6 FT X 1.5 FT THK	3'-6"	MAJOR- #7 @ 14" MINOR- #5 @ 14"	#4 @ 14" O.C. EW

FOOTING SCHEDULE NOTES:

- DEPTH FTG = DEPTH OF FOOTING IS MEASURED FROM FINISH FLOOR ELEVATION TO TOP OF FOOTING.
- NORTH-SOUTH IS MAJOR DIRECTION (LONG SIDE OF FOOTING).
- EAST-WEST IS MINOR DIRECTION (SHORT SIDE OF FOOTING).