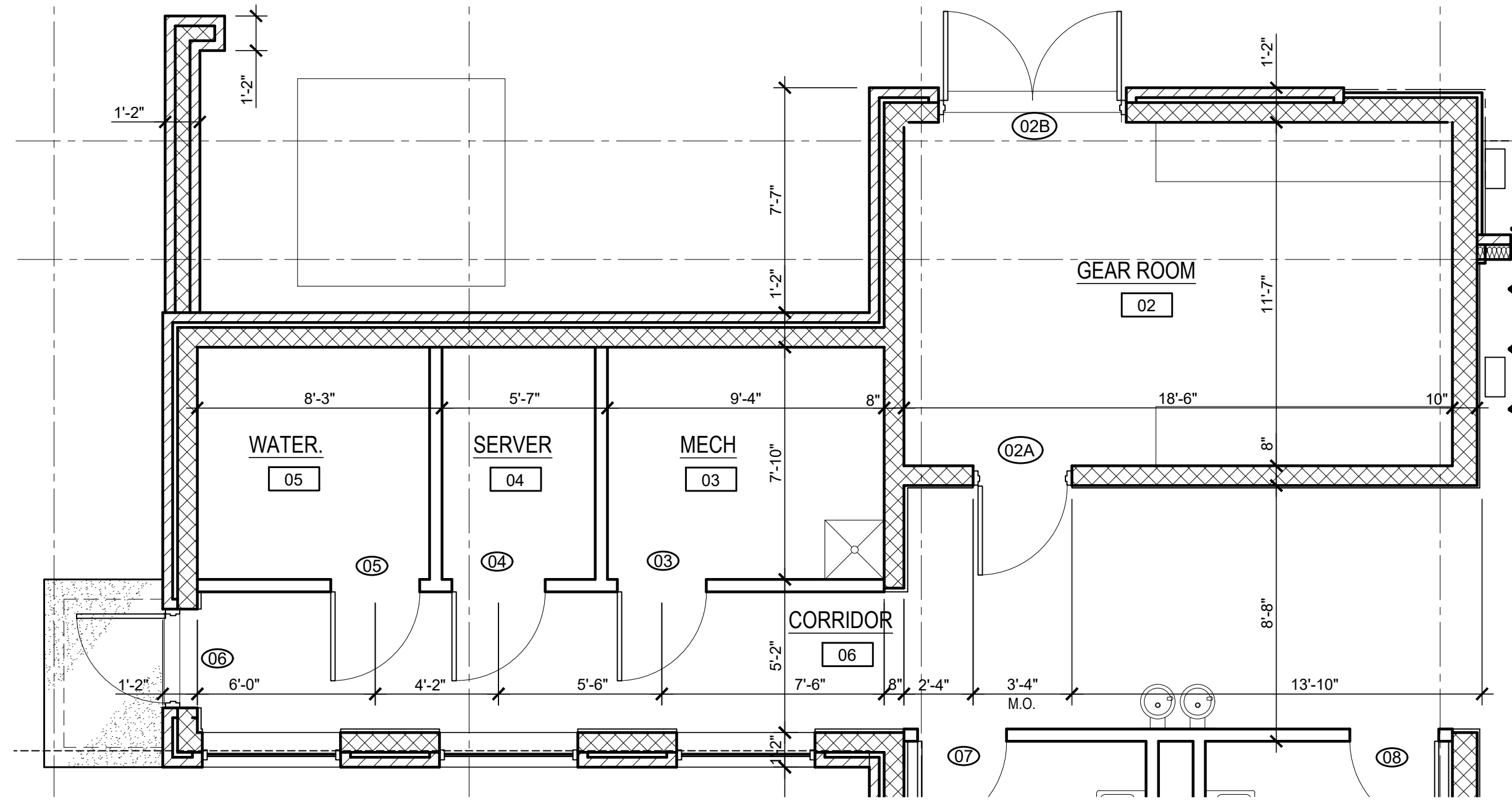
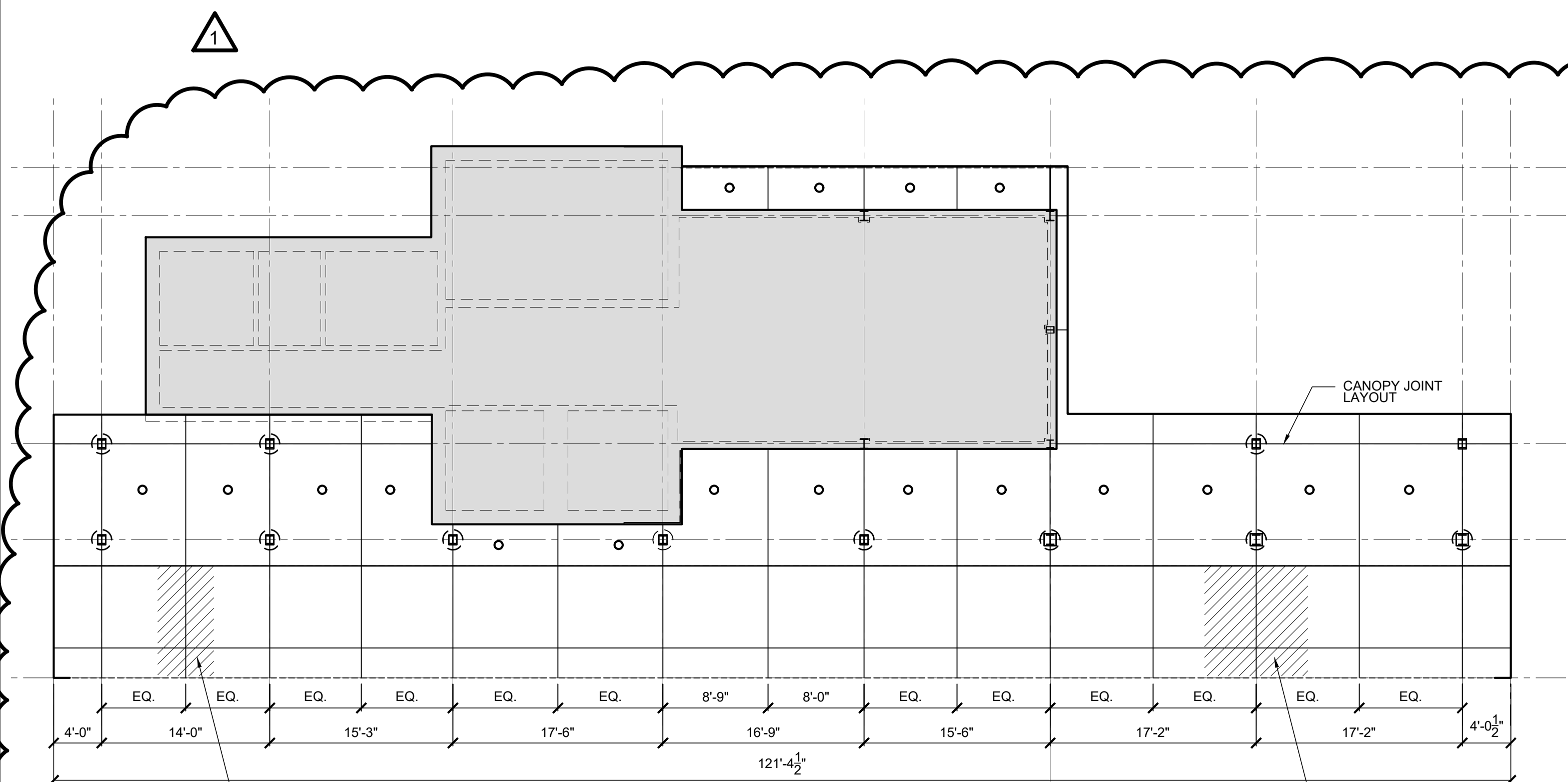


ISSUED FOR:	CD	NO	REVISION	DATE
ISSUE DATE:	8/5/2019	Δ	REBID REVISION	8/05/2019
SCALE:	AS SHOWN			
DESIGNED BY:	ADT			
DRAWN BY:	ADT			
CHECKED BY:	ADT			

**LAKELAND TRANSFER CENTER**  
**LAKELAND COMMUNITY COLLEGE**  
 7601 CLOCKTOWER DR., KIRTLAND, OH 44094

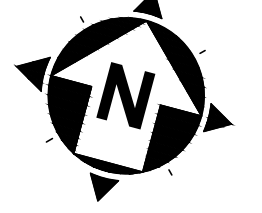
**REFLECTED CEILING PLAN &  
 ENLARGED CORRIDOR PLAN**

PROJECT NO.	18050002
DISCIPLINE	ARCH
SHEET NAME	A-02
SHEET	OF
31	55



PANTOGRAPH LOCATION  
 COORDINATE EXACT  
 LOCATION W/ PROTERRA  
 CONTRACTOR

**CANOPY PLAN**  
 SCALE: 1/8" = 1'-0"



PANTOGRAPH LOCATION  
 COORDINATE EXACT  
 LOCATION W/ PROTERRA  
 CONTRACTOR

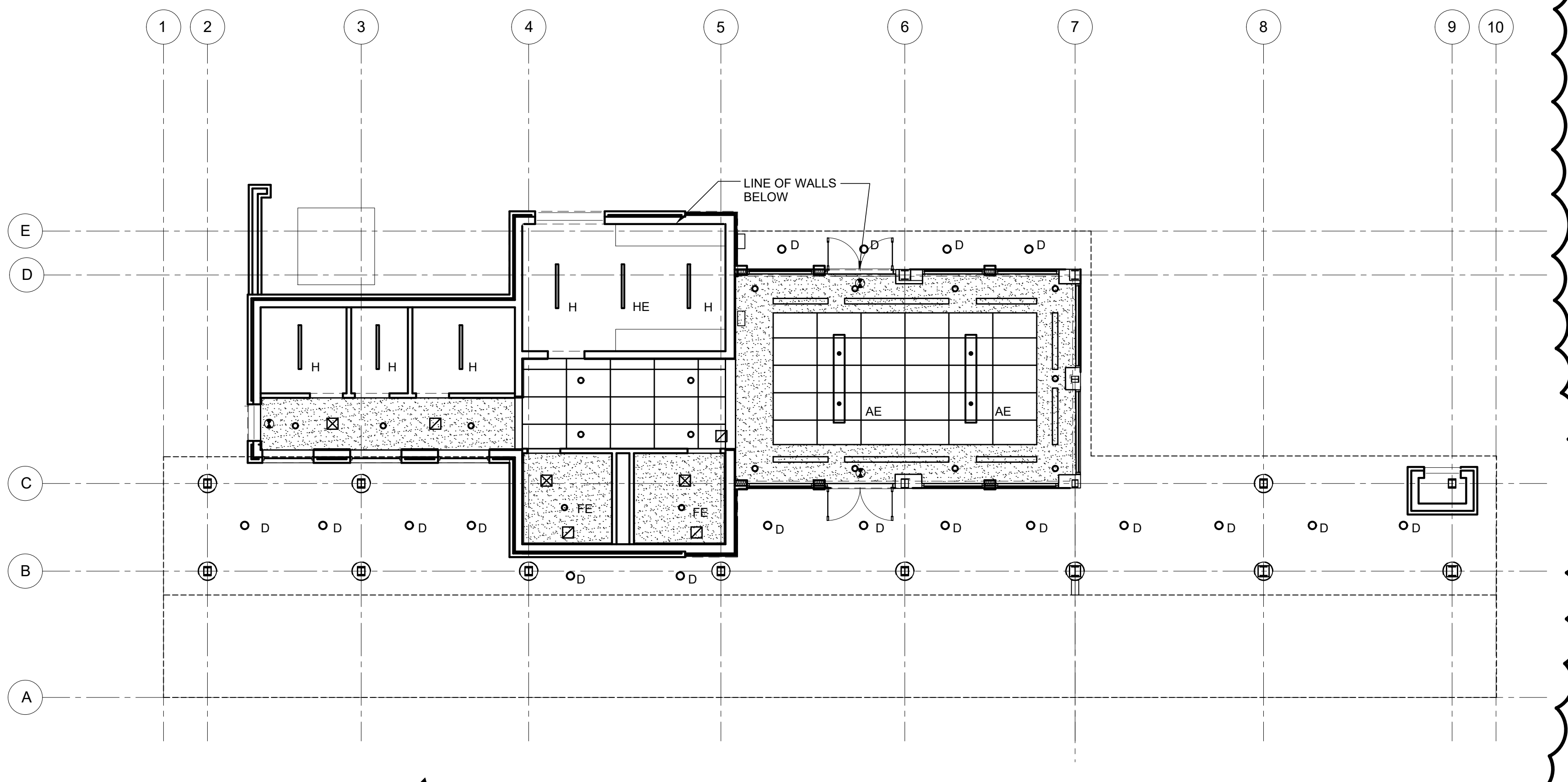
**ENLARGED PLAN**  
 SCALE: 1/4" = 1'-0"



**LEGEND**

- 30" X 48" SUSPENDED CEILING GRID SYSTEM
- PAINTED GYPSUM BD.
- RECESSED CAN LIGHT
- PENDENT FIXTURE
- LINEAR DIFFUSER
- S.A. GRILLE
- R.A. GRILLE
- EXIT LIGHT

- GYPSUM BOARD METAL SUSPENSION SYSTEMS AS MFG BY THE UNITED STATES GYPSUM COMPANY (USG) OR APPROVED EQUAL.
- PERFORMANCE REQUIREMENTS: FABRICATE AND INSTALL SYSTEMS AS INDICATED BUT NOT LESS THAN THAT REQUIRED TO COMPLY WITH ASTM C754 UNDER THE FOLLOWING CONDITIONS: INTERIOR SUSPENDED CEILINGS AND SOFFITS. MAXIMUM DEFLECTION OF 1/360 OF DISTANCE BETWEEN METAL SUPPORTS.
- CEILING SUPPORT MATERIAL:
- A. HANGER ANCHORAGE DEVICES: SCREWS, CLIPS, BOLTS OR OTHER DEVICES COMPATIBLE WITH INDICATED STRUCTURAL ANCHORAGE FOR CEILING HANGERS AND WHOSE SUITABILITY HAS BEEN PROVEN THROUGH STANDARD CONSTRUCTION PRACTICES OR BY CERTIFIED TEST DATA.
  - B. HANGERS: STEEL WIRE OR RODS, SIZES TO COMPLY WITH REQUIREMENTS OF ASTM C754 FOR CEILING OR WIRE: ASTM A641, SOFT, CLASS 1 GALVANIZED RODS AND FLATS: MILD STEEL COMPONENTS. GALVANIZED OR PAINTED WITH RUST INHIBITIVE PAINT FOR INTERIOR WORK.
  - C. FRAMING SYSTEM: MAIN RUNNERS: COLD ROLLED, "C" SHAPED STEEL CHANNELS, 16 GAUGE MINIMUM FINISH: GALVANIZED OR PAINTED WITH RUST INHIBITIVE PAINT
  - E. CROSS FURRING: HAT-SHAPED STEEL FURRING CHANNELS, ASTM C645, 3/8 INCH HIGH, 25 GAUGE, GALVANIZED
  - F. FURRING ANCHORAGE: 16 GAUGE GALVANIZED WIRE TIES MANUFACTURER'S STANDARD WIRE TYPE CLIPS, BOLTS, NAILS OR SCREWS RECOMMENDED BY FURRING MANUFACTURER AND COMPLYING WITH ASTM C754.
  - G. METAL SUPPORT INSTALLATION: SECURE HANGERS OR RODS ATO STRUCTURAL SUPPORT BY CONNECTING DIRECTLY TO STRUCTURE WHERE POSSIBLE. OTHERWISE CONNECT TO INSERTS, CLIPS OR OTHER ANCHORAGE DEVICES OR FASTENER, AS INDICATED. SPACE MAIN RUNNERS, HANGERS AND FURRING ACCORDING TO REQUIREMENTS OF ASTM C754
  - H. WHERE SPACING OF STRUCTURAL MEMBERS, OR WIDTHS OR OTHER DUCT EQUIPMENT, PREVENTS REGULAR SPACING OF HANGERS, PROVIDE SUPPLEMENTAL HANGERS AND SUSPENSION MEMBERS AND REINFORCE NEAREST AFFECTED HANGERS TO SPAN EXTRA DISTANCE.



**REFLECTED CEILING PLAN**  
 SCALE: 1/8" = 1'-0"



H:\2019\18050002\DWG\SHEETSA\_18050002 - PLAN REBID REVISIONS.DWG - A-02 - 8/5/2019 11:09:58 AM - JACOB BRYSK