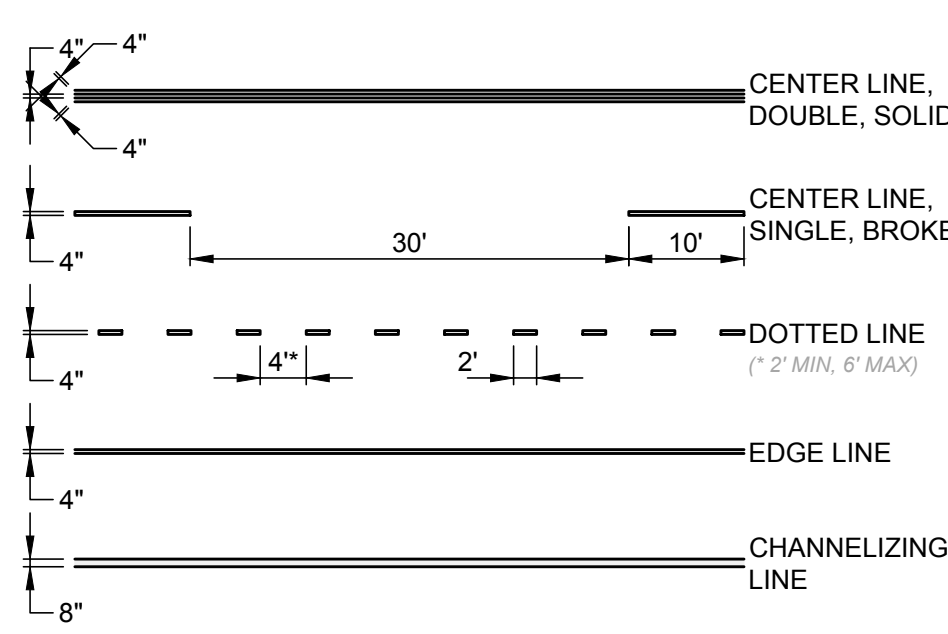
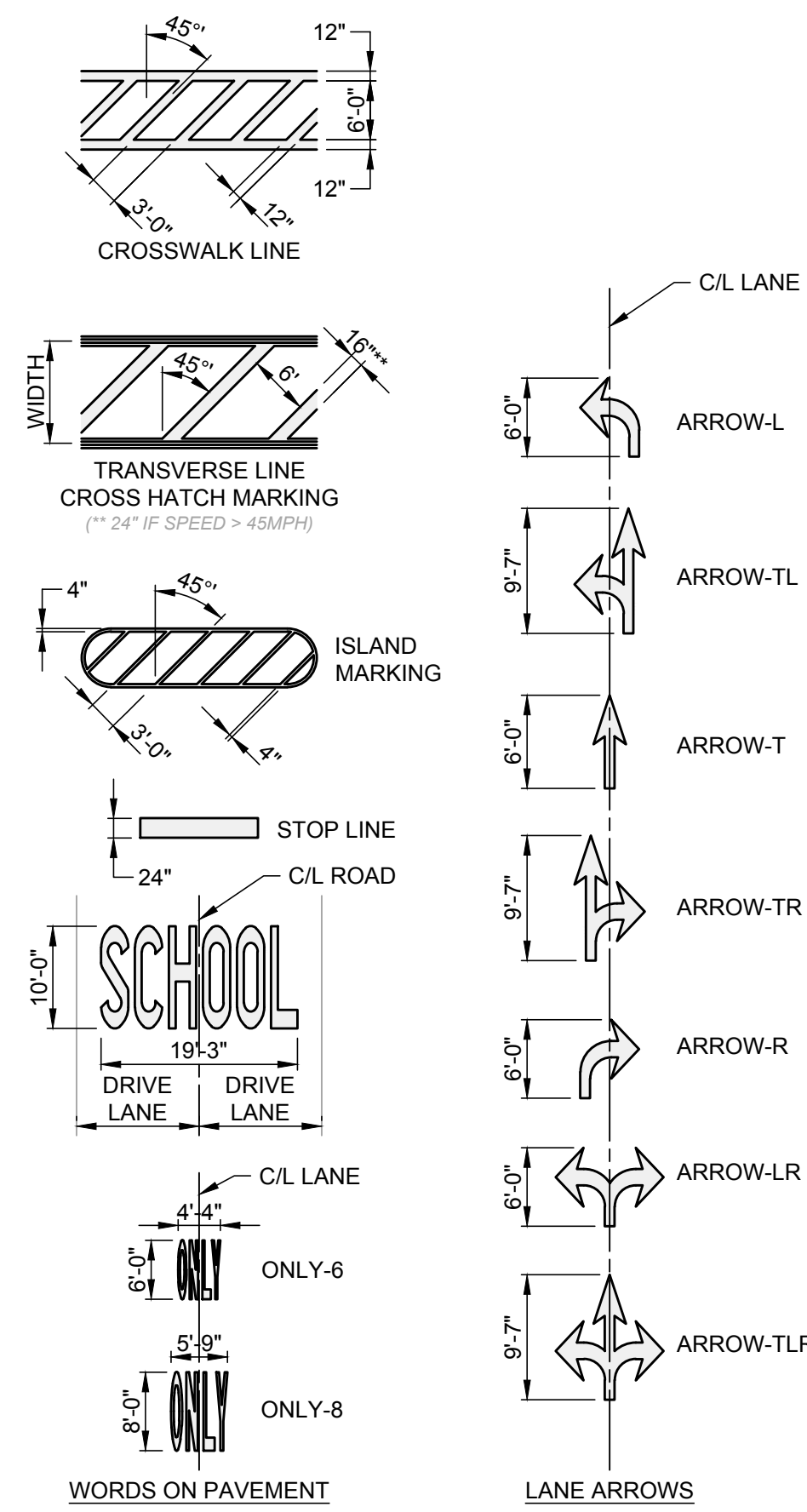


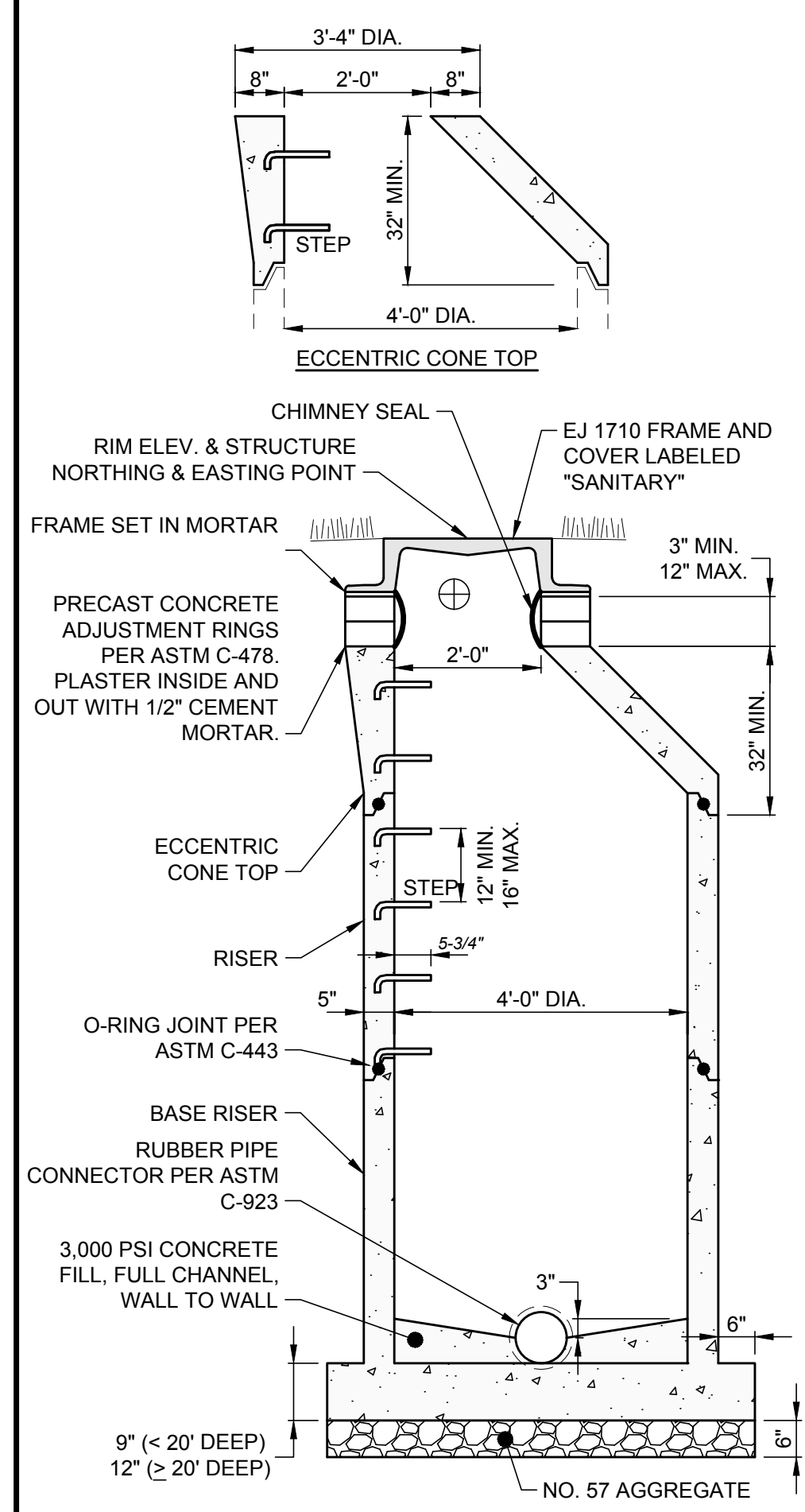
- NOTES:
- ALL PAINTED AREAS TO RECEIVE (2) 15 MIL COATS OF PAINT WITH 4 WEEK MIN. BETWEEN COATS.
 - SEE PAVEMENT MARKING DETAIL FOR ARROW PLACEMENT DIMENSIONS RELATIVE TO LANE LINES.

TURN AND STRAIGHT ARROW (6 FT) DETAIL
SCALE: NONE



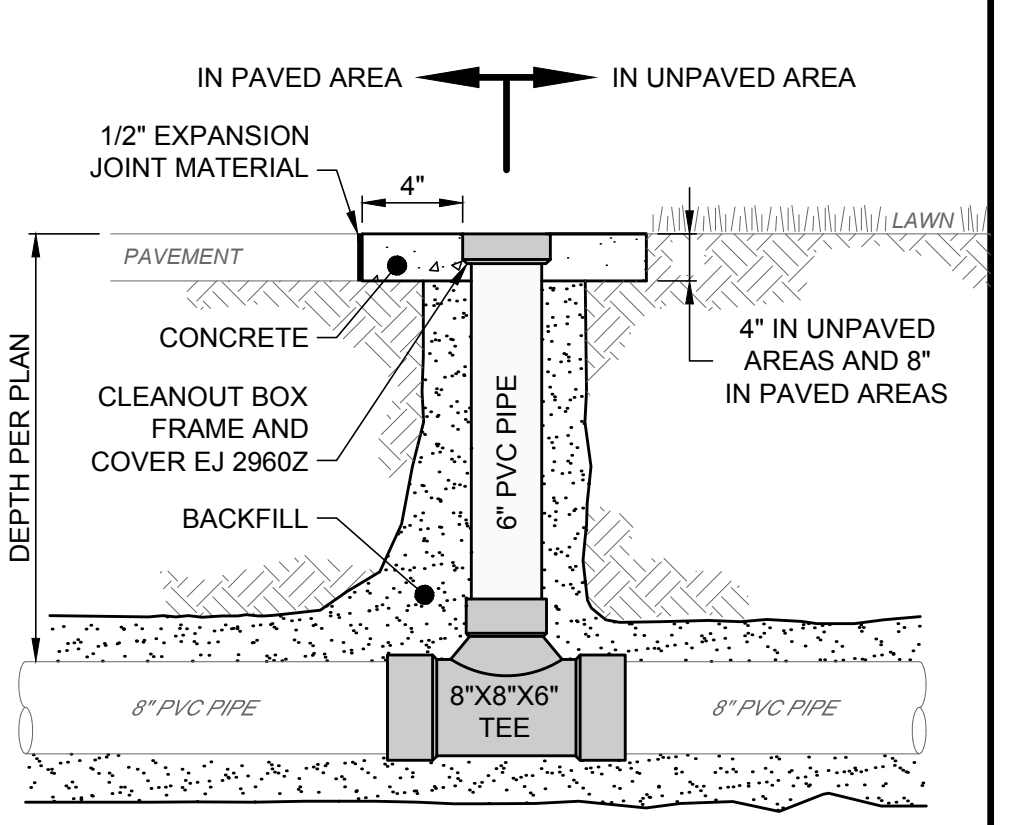
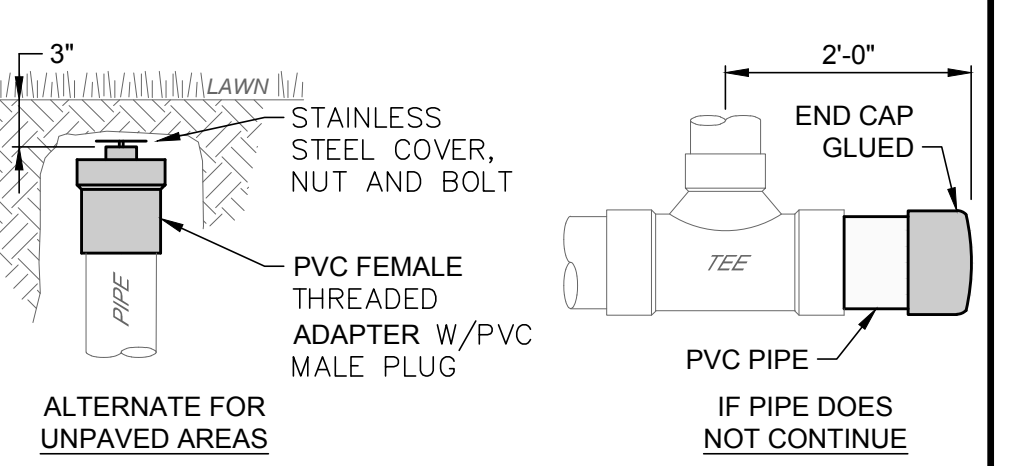
- NOTES:
- CENTER LINES MUST BE YELLOW. WORDS, LANE ARROWS, CHANNELIZING LINES, TRANSVERSE LINES, DOTTED LINES, EDGE LINES, STOP LINES AND CROSSWALKS MUST BE WHITE. PARKING STALL LINES AND ISLAND STRIPING TO DESIGNATE HANDICAP ACCESSIBILITY MUST BE BLUE. WORDS, LANE LINES AND ISLAND MARKING TO DESIGNATE FIRE LANES MUST BE RED. PARKING STALL LINES AND ISLAND MARKINGS SHALL BE WHITE OR YELLOW (AS PER PLAN). ALL OTHER PAVEMENT MARKINGS SHALL BE WHITE UNLESS SPECIFIED OTHERWISE.
 - ALL PAINTED AREAS SHALL RECEIVE (2) 15 MIL COATS OF PAINT WITH MINIMUM 4 OF WEEKS BETWEEN FIRST AND SECOND COATS, BUT NO LONGER THAN 12 WEEKS.
 - THIS DETAIL IS FOR REFERENCE ONLY; NOT ALL ITEMS MAY APPLY. SEE PLANS AND DETAILS FOR LOCATIONS AND SIZES.

PAVEMENT MARKING DETAIL
SCALE: NONE



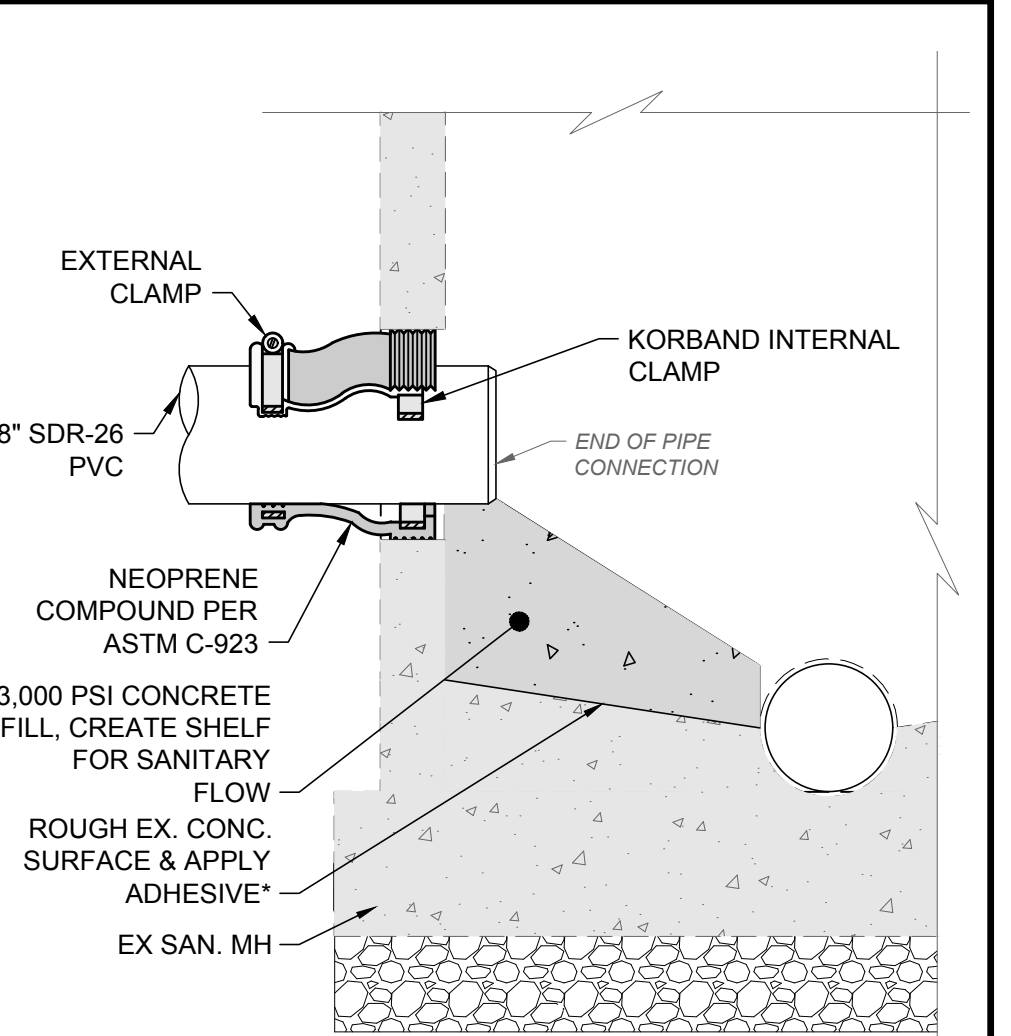
- NOTES:
- STRUCTURE TO MEET H-20 LOADING.
 - PRE-CAST CONCRETE SECTIONS SHALL BE MANUFACTURED AND FURNISHED AS SOLID SECTIONS WITHOUT LIFT HOLES.
 - PRE-CAST CONCRETE SHALL BE REINFORCED PER ASTM C-478.
 - TOP, TRANSITION AND REDUCER SECTIONS MAY BE ECCENTRIC CONE, CONCENTRIC CONE OR FLAT SLAB.
 - MANHOLE BASE MUST BE PRECAST WITH BASE RISER (I.E. MONOLITHIC).
 - USE REINFORCED PLASTIC MANHOLE STEPS.
 - FIRST STEP SHALL NOT BE THAN 2'-0" BELOW TOP OF FRAME. MAKE PROJECTION 3-1/2" IF IN 24" DIA. SECTION.
 - AN INTEGRAL FLEXIBLE PIPE TO MANHOLE CONNECTOR SHALL BE USED WHENEVER A PIPE PENETRATES INTO A PRECAST CONCRETE MANHOLE OR STRUCTURE. THE CONNECTOR SHALL BE THE Z-LOK CONNECTOR MANUFACTURED BY A-LOK PRODUCTS, INC., OR APPROVED EQUAL.

PRE-CAST CONCRETE MANHOLE (SANITARY) DETAIL
SCALE: NONE



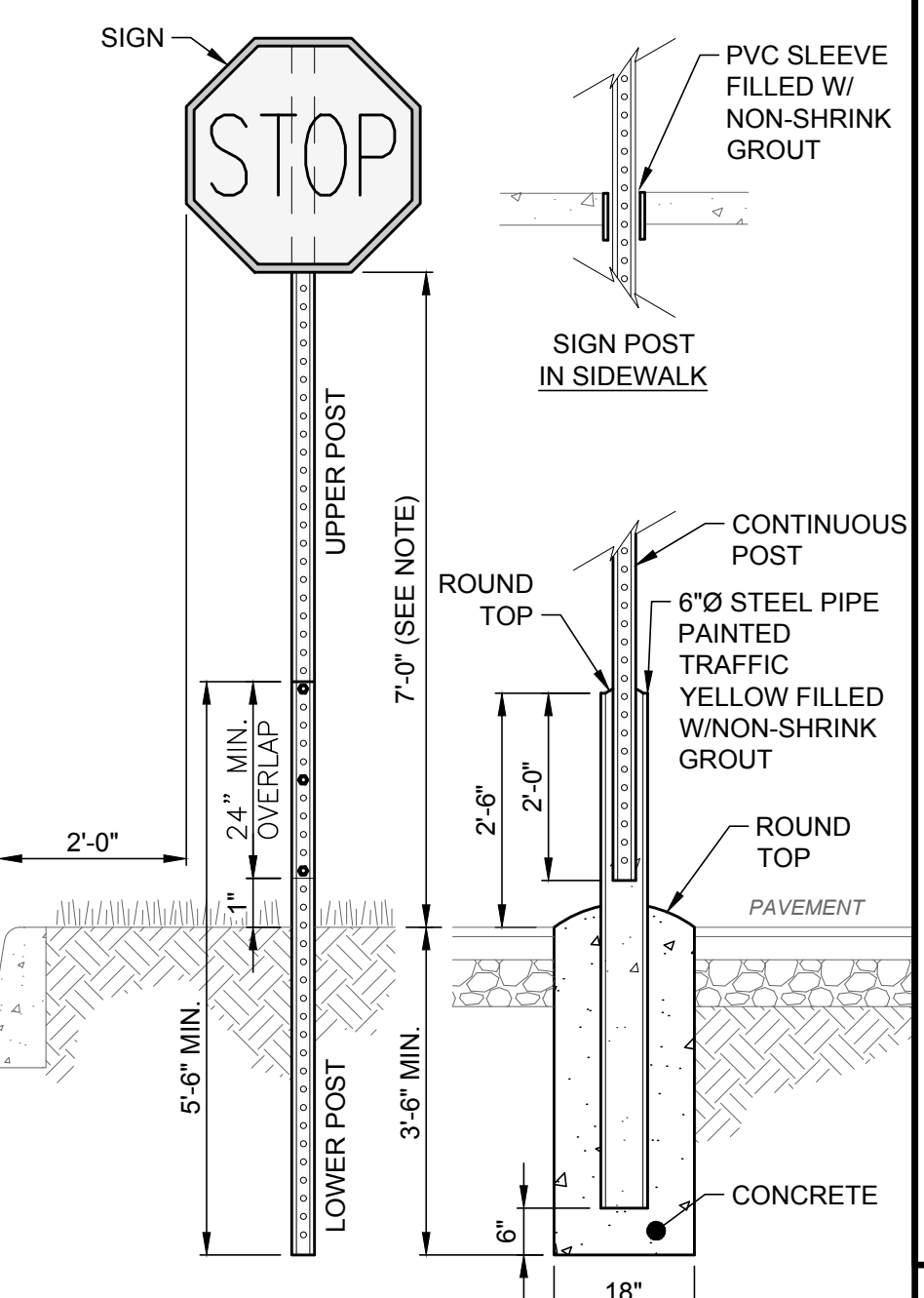
- NOTES:
- CONCRETE SHALL BE ODOT ITEM 499, CLASS QC-1.
 - USE 4" CLEANOUT FOR 4" PIPE; AND 6" CLEANOUT FOR 6" AND ABOVE (6" CLEANOUT SHOWN WITH 8" PIPE).
 - CASTING SHALL MEET H-20 LOADING.

SANITARY CLEANOUT TYPE 1 DETAIL
SCALE: NONE



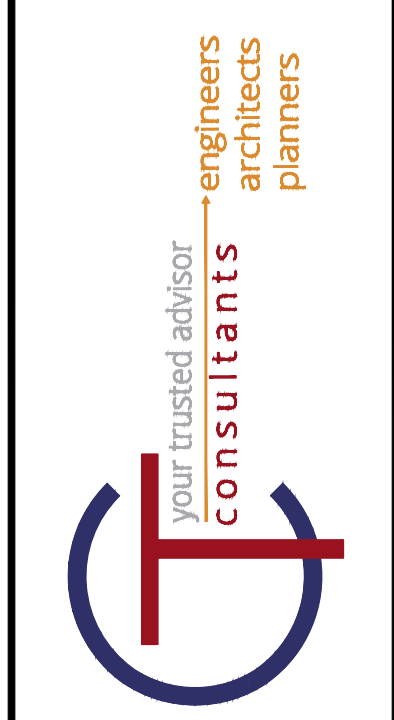
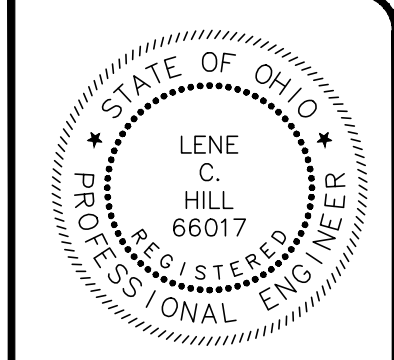
- NOTES:
- MAX. LENGTH OF PIPE CONNECTION FOR PVC, RCP OR VCP SHALL BE 24". DIP MAY BE FULL LENGTH PIECE.

CONNECT TO EX. SAN. MANHOLE
SCALE: NONE



- NOTES:
- CONCRETE SHALL BE ODOT ITEM 499, CLASS QC-1.
 - POSTS SHALL BE 2 LB/FT GALVANIZED STEEL U-CHANNEL WITH 3/8" HOLES ON 1" CENTERS.
 - "STOP" SIGN SHOWN FOR REFERENCE. SEE LAYOUT PLAN FOR SPECIFIC TYPE OF SIGNS TO BE USED.
 - IN BUSINESS, COMMERCIAL AND RESIDENTIAL AREAS, THE MINIMUM HEIGHT MEASURED FROM BOTTOM OF SIGN TO TOP OF CURB OR EDGE OF PAVEMENT SHALL BE 7'-0". THE HEIGHT TO THE BOTTOM OF A SECONDARY SIGN MOUNTED BELOW ANOTHER SIGN SHALL BE 6'-0".

SIGN POST DETAIL
SCALE: NONE



ISSUED FOR:	CD	NO	REVISION	DATE
LAKELAND TRANSFER CENTER	8/5/2019			
LAKELAND COMMUNITY COLLEGE	8/5/2019			
7601 CLOCKTOWER DR., KIRTLAND, OH 44094	AS SHOWN			
	LCH / GMS			
	GMS			
	LCH			

LAKELAND TRANSFER CENTER
LAKELAND COMMUNITY COLLEGE
7601 CLOCKTOWER DR., KIRTLAND, OH 44094

CONSTRUCTION DETAILS
PAVEMENT MARKINGS & SANITARY

PROJECT NO.	18050002
DISCIPLINE	CIVIL
SHEET NAME	DT_2
SHEET	18
OF	55