

DATE	REVISION	NO	CD	ISSUED FOR	ISSUE DATE	SCALE	DESIGNED BY	DRAWN BY	CHECKED BY
8/30/2019		1	08/05/2019	AS SHOWN	08/05/2019	AS SHOWN	BMS	BMS	TOP

**LAKELAND TRANSFER STATION**  
**LAKELAND COMMUNITY COLLEGE**  
 7700 CLOCKTOWER DR., KIRTLAND, OH 44094

**ELECTRICAL SITE PLAN**

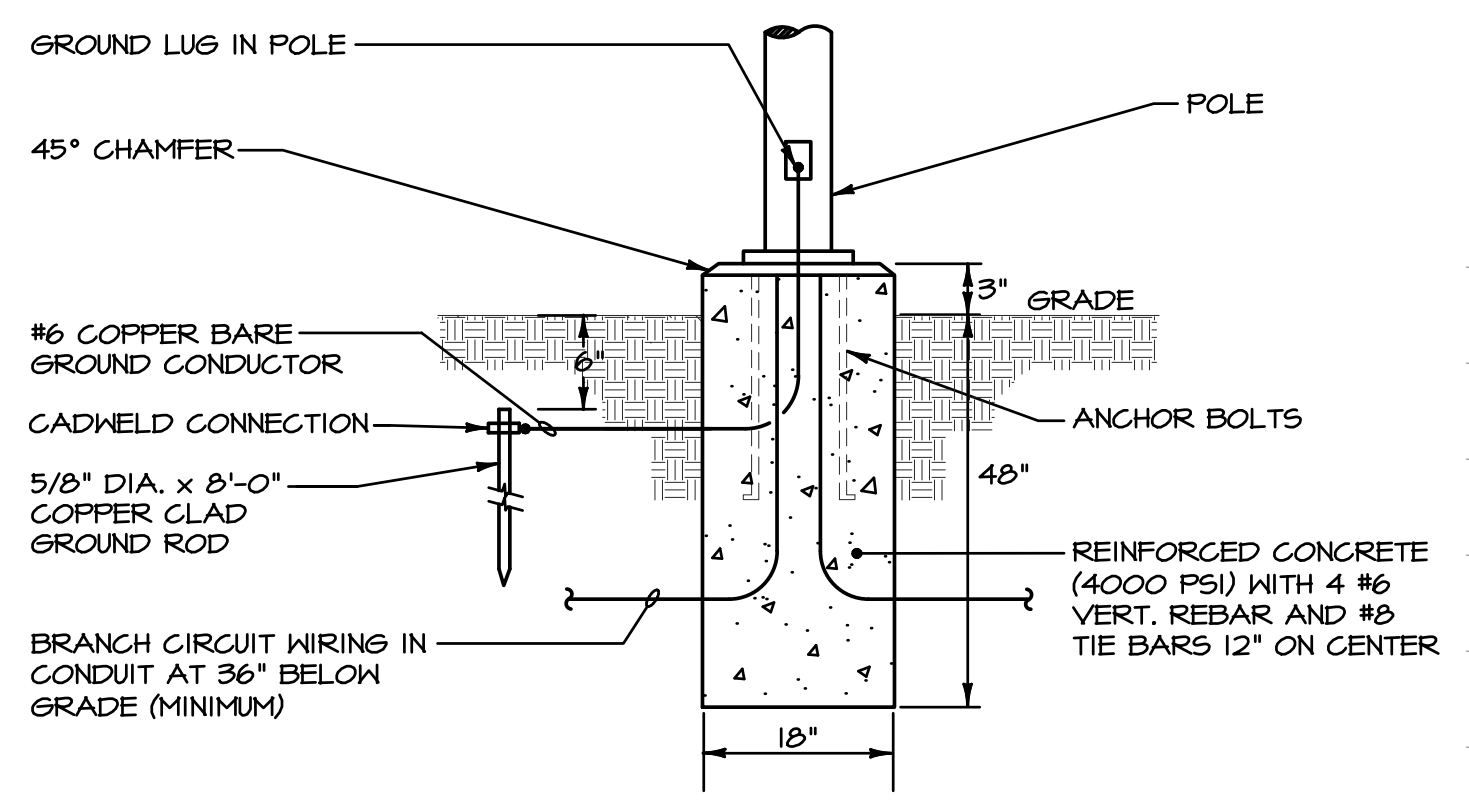
PROJECT NO.	<b>18050002</b>
DISCIPLINE	<b>ELECTRICAL</b>
SHEET NAME	<b>E-3</b>
SHEET	OF

**GENERAL NOTES**

- REFER TO SPECIFICATIONS FOR ADDITIONAL REQUIREMENTS.
- EXACT UNDERGROUND CONDUIT ROUTINGS TO BE DETERMINED IN THE FIELD TO BE COORDINATED WITH ALL OTHER UTILITIES.
- COORDINATE THE INSTALLATION OF ALL NEW LIGHT POLES AND BASES WITH SITE CIVIL CONTRACTOR. ALL UNDERGROUND WORK SHALL BE INSTALLED PRIOR TO PAVING. NO SAWCUTTING OR PATCHING AS A RESULT OF IMPROPER COORDINATION IS PERMITTED.
- THE NEW POLES SHALL BE FURNISHED WITH WIRELESS NETWORK NODES INSTALLED AND ACTIVATED, HOWEVER, THE METHOD OF CONTROL WILL BE FROM THE LIGHTING RELAY PANEL. THE OWNER WILL CONTRACT WITH SIEMENS LIGHTING CONTROL AT A LATER DATE TO PROGRAM AND SETUP THE WIRELESS NETWORK SYSTEM.

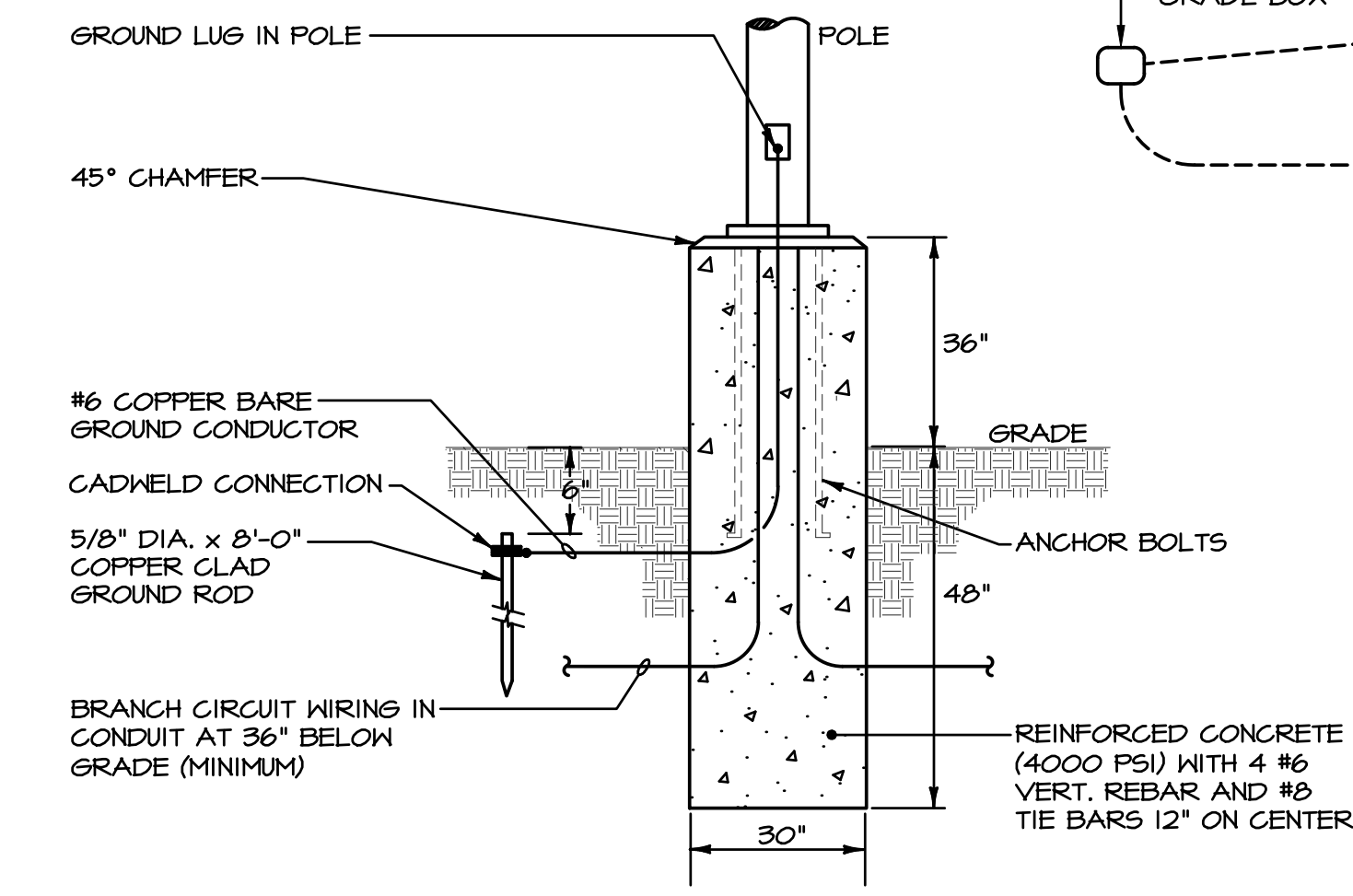
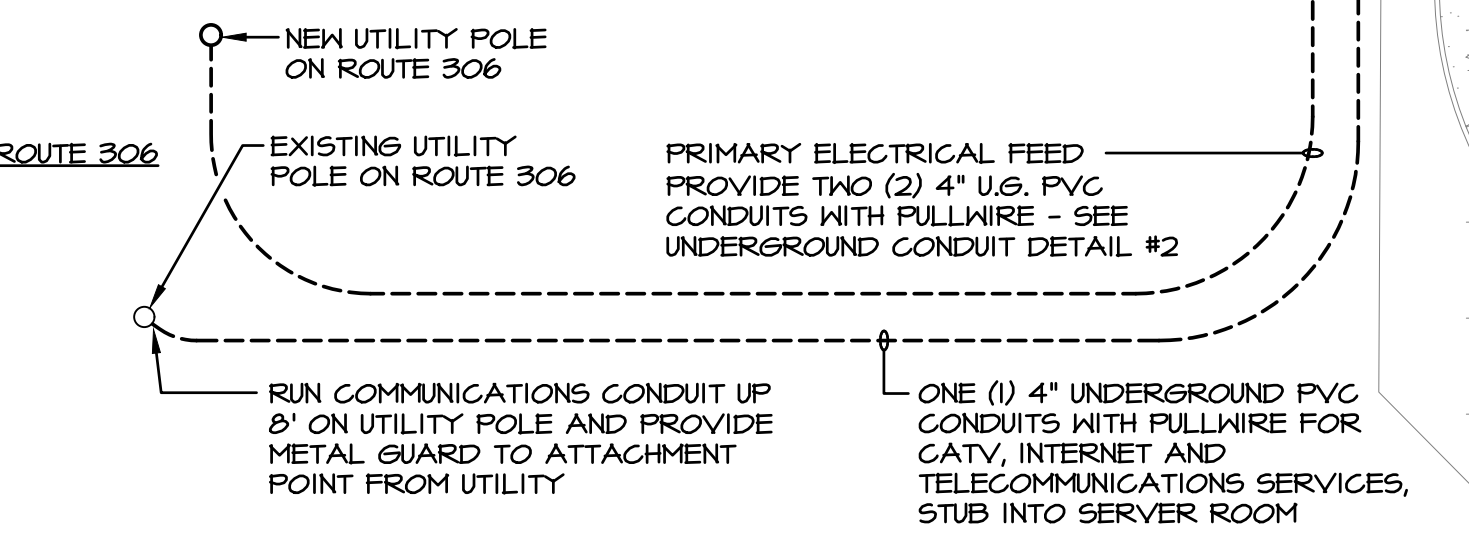
**PLAN NOTES**

- PROVIDE 1 1/2" UNDERGROUND PVC CONDUIT WITH FULLWIRE STUBBED UP AND CAPPED AND LABELED AT BOTH ENDS, FOR FUTURE INTERNALLY ILLUMINATED MONUMENT SIGN. STUB UP NEXT TO PANEL 'LA.'
- PROVIDE (3) THREE 1" PVC CONDUITS WITH FULLWIRE WITH CONDUIT STUBBED FROM BELOW TO 1" UNDER COVER (AND CAP) OF IN-GRADE 8"X8"X12"D PULLBOX (WITH TIER 15 LOAD RATING) FOR SIGNAL LIGHT WITH LABEL 'ELECTRIC' - TO BE QUARTZITE #PC0808B12 / PC0808H00T OR EQUAL. SEE UNDERGROUND CONDUIT DETAIL #1. STUB, CAP AND LABEL CONDUIT ADJACENT TO MAIN DISTRIBUTION PANEL 'BCP.'
- EXISTING CATV IN-GRADE BOX AND RELATED CONDUIT AND WIRING TO BE REMOVED AND RELOCATED. EXTEND CONDUIT AND CATV CABLING TO NEW LOCATION INDICATED.
- PROVIDE 2-10 AWG # 1-10 AWG GND - 3/4" UNDERGROUND PVC CONDUIT.
- EXISTING LIGHTING POLE TO BE REMOVED. REMOVE EXISTING LIGHT, INSTALL NEW GRADE BOX AND MAINTAIN BRANCH CIRCUIT WIRING FOR DOWNSTREAM LIGHTING FIXTURES TO REMAIN.



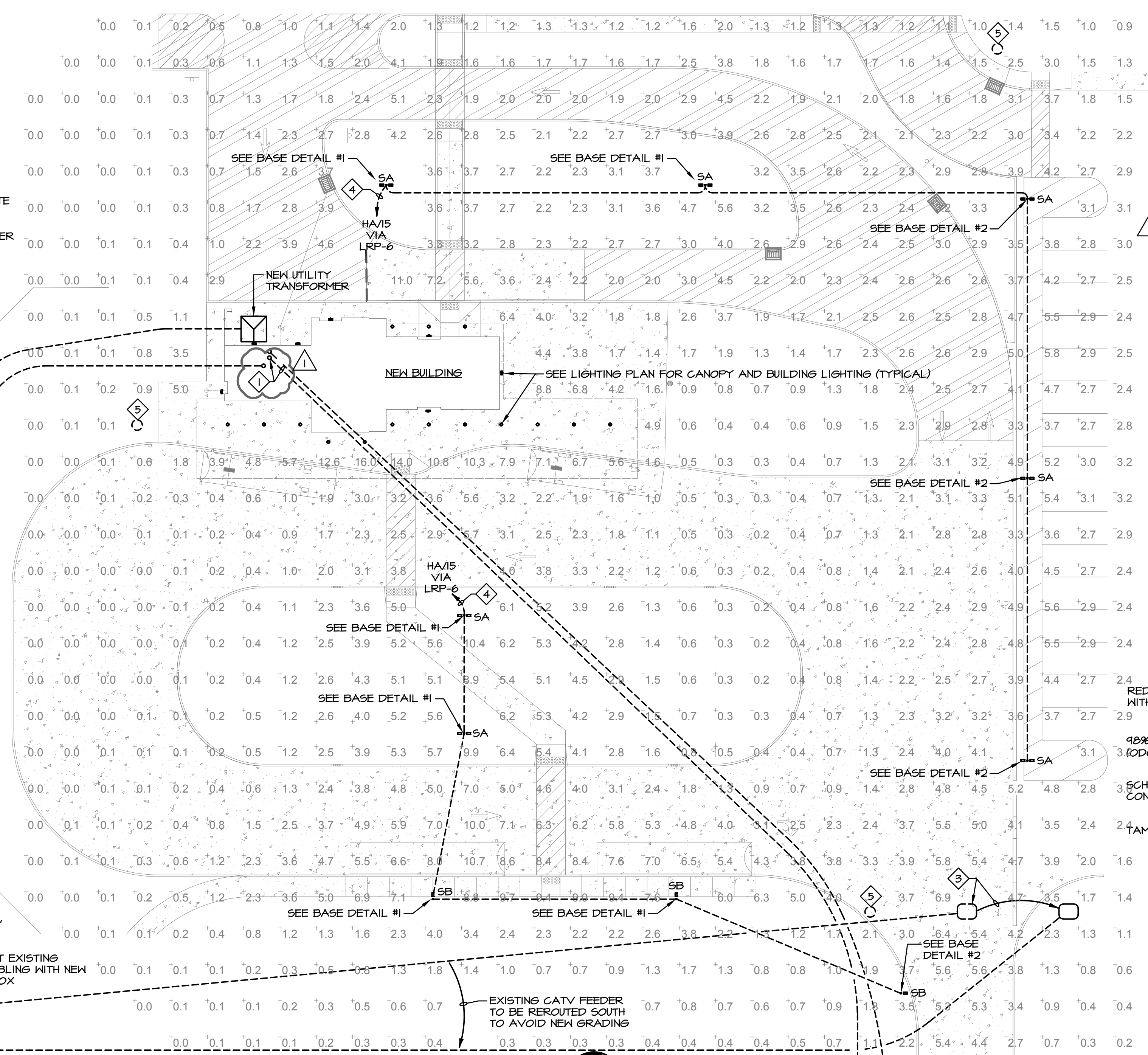
**FLUSH MOUNTED LIGHTING POLE BASE - DETAIL #1**  
NO SCALE

NOTE: POSITION EDGE OF BASE AT 12" MINIMUM FROM ADJACENT SIDEWALK.



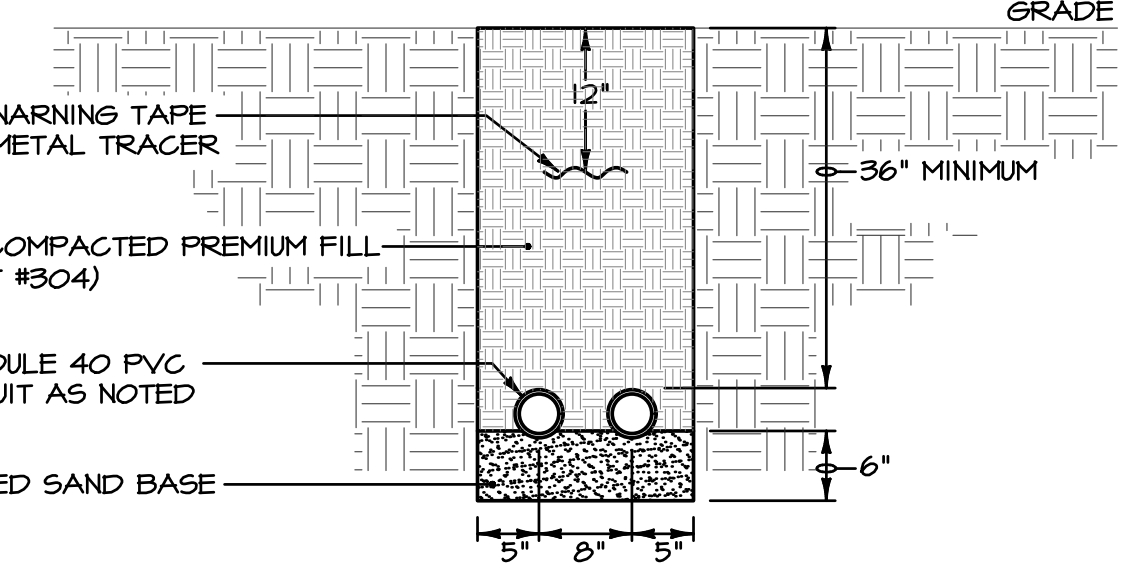
**LIGHTING POLE BASE - DETAIL #2**  
NO SCALE

NOTE: POSITION EDGE OF BASE AT 24" MINIMUM FROM ADJACENT CURB. POLE IS OVER-SIZED TO RESIST HEAVY TRAFFIC AND SNOW FLOWS.



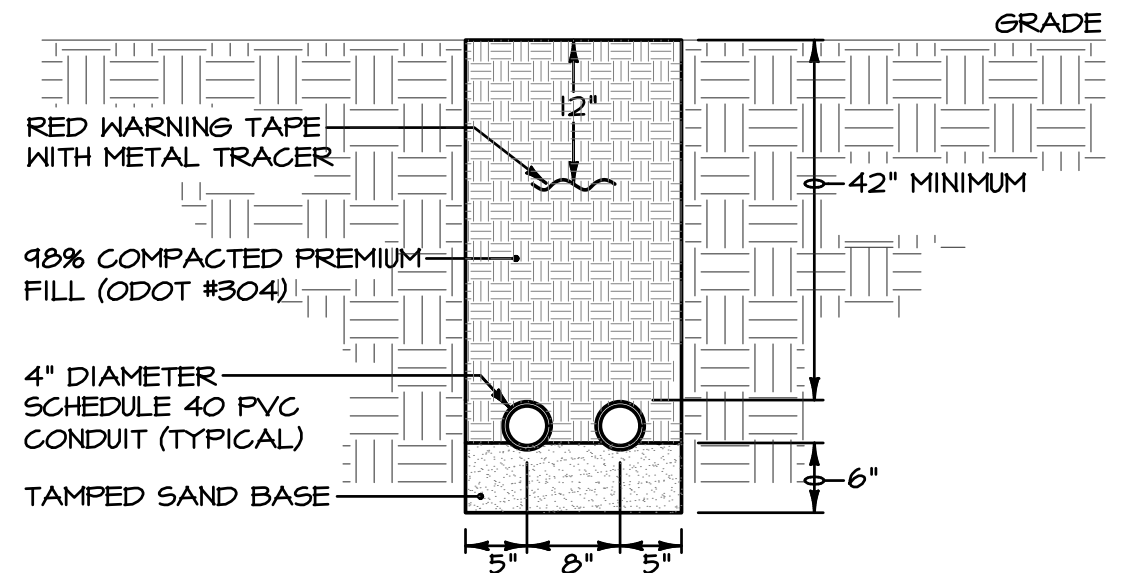
**ELECTRICAL SITE PLAN**  
SCALE: 1" = 20'-0"

LUMINAIRE SCHEDULE						
TYPE	LUMINAIRE WATTS	VOLTS	LAMP TYPE	DESCRIPTION	MOUNTING	REMARKS
A	60	277	LED 4000K 8000 LUMENS	CABLE SUSPENDED 8' LONG LED DIRECT/INDIRECT LINEAR FIXTURE WITH DUST COVER AND FINISH TO BE SELECTED BY ARCHITECT.	SUSPENDED AT 11'-0" A.F.F.	CORELITE DSI-WS-40L840-1D-UNV-STD-DC FINISH-A-C48-T1-8
AE	60	277	LED 4000K 8000 LUMENS	SAME AS TYPE 'A', EXCEPT WITH INTEGRAL BATTERY BACKUP.	SUSPENDED AT 11'-0" A.F.F.	DSI-WS-40L840-1D-UNV-STD-EL-14W-DC-FINISH-A-C48-T1-8
B	28	277	LED 4000K 3000 LUMENS	6" DIAMETER LED DOWNLIGHT WITH NARROW DISTRIBUTION OPTICS, SPECULAR CLEAR REFLECTOR AND INTEGRAL 0-10V DIMMING DRIVER.	RECESSED	PORTFOLIO LD68-30-D010 / EL68-3050-80-40 / 6LB-N-1-LI
BE	28	277	LED 4000K 3000 LUMENS	SAME AS TYPE 'B', EXCEPT WITH INTEGRAL BATTERY BACKUP.	RECESSED	PORTFOLIO LD68-30-D010-EM14 / EL68-3050-80-40 / 6LB-N-1-LI
D	27	277	LED 4000K 3000 LUMENS	8" DIAMETER LED DOWNLIGHT WITH SPECULAR CLEAR REFLECTOR AND INTEGRAL 0-10V DIMMING DRIVER.	RECESSED	PORTFOLIO LD68-30-D010 / ER8-3040-8040 / 6LB-M-1-LI
FE	28	277	LED 4000K 3000 LUMENS	6" DIAMETER LED DOWNLIGHT WITH MEDIUM DISTRIBUTION OPTICS, SPECULAR CLEAR REFLECTOR, INTEGRAL BATTERY BACKUP AND INTEGRAL 0-10V DIMMING DRIVER.	RECESSED	PORTFOLIO LD68-30-D010-EM14 / EL68-3050-80-40 / 6LB-M-1-LI
H	31	277	LED 4000K 4269 LUMENS	CHAIN SUSPENDED 4' LONG LENSED LED STRIPLIGHT.	SUSPENDED AT 10'-0" A.F.F.	METALUX 4SLED-LD5-4TSL-LW-UNV-L840-CD1-AYC-CHAINSET
HE	31	277	LED 4000K 4269 LUMENS	SAME AS TYPE 'H', EXCEPT WITH INTEGRAL BATTERY BACKUP.	SUSPENDED AT 10'-0" A.F.F.	METALUX 4SLED-LD5-4TSL-LW-UNV-EL14W-L840-CD1-AYC-CHAINSET
SA	226	277	LED 4000K	SITLED POLE WITH 2 HEADS AT 180 DEGREES. TYPE 'N' WIDE DISTRIBUTION. 18'-0" ALUMINUM ROUND TAPERED POLE. BRONZE FINISHES.	18'-0" POLE	MCGRAW EDSON HAPOO GLEON-AF-02-E1-T4W-BZ RTA SERIES POLE
SB	166	277	LED 4000K	SAME AS TYPE 'SA', EXCEPT WITH SINGLE HEAD, TYPE II DISTRIBUTION AND HIGHER LUMEN PACKAGE.	18'-0" POLE	MCGRAW EDSON HAPOO GLEON-AF-03-E1-T2-BZ RTA SERIES POLE
WP	49	277	LED 4000K 4313 LUMENS	LED WALL PACK WITH INTEGRAL COLD WEATHER BATTERY BACKUP. FINISH TO BE SELECTED BY ARCHITECT.	WALL AT 9'-0" A.F.F.	MCGRAW EDSON ENCF02-LED-277V-BL4-FINISH-CWB
X	1	277	LED	LED EDGE-LIT EXIT SIGN WITH RED LETTERING AND INTEGRAL BATTERY BACKUP. SELF DIAGNOSTICS.	WALL ABOVE DOOR	SURELITES EUX7-1-R-SD



**TYPICAL UNDERGROUND CONDUIT DETAIL #1 - NON ENCASED**  
NO SCALE

DETAIL #1 NOTE:  
1) THIS TYPICAL DETAIL APPLIES TO ALL UNDERGROUND CONDUIT ROUTING UNLESS OTHERWISE NOTED.



**UNDERGROUND CONDUIT DETAIL #2 - NON ENCASED**  
NO SCALE

DETAIL #2 NOTE:  
1) PROVIDE 6" CONCRETE COVER WHEN ROUTED BELOW DRIVES AND PARKING AREAS.

**2 WORKING DAYS BEFORE YOU DIG**

CALL TOLL FREE **800-362-2764**

OHIO UTILITIES PROTECTION SERVICE

33851 Curtis Blvd., 216  
 Eastlake, OH 44095  
 1.440.953.8760  
 1.440.953.1289  
 www.tecinc.com