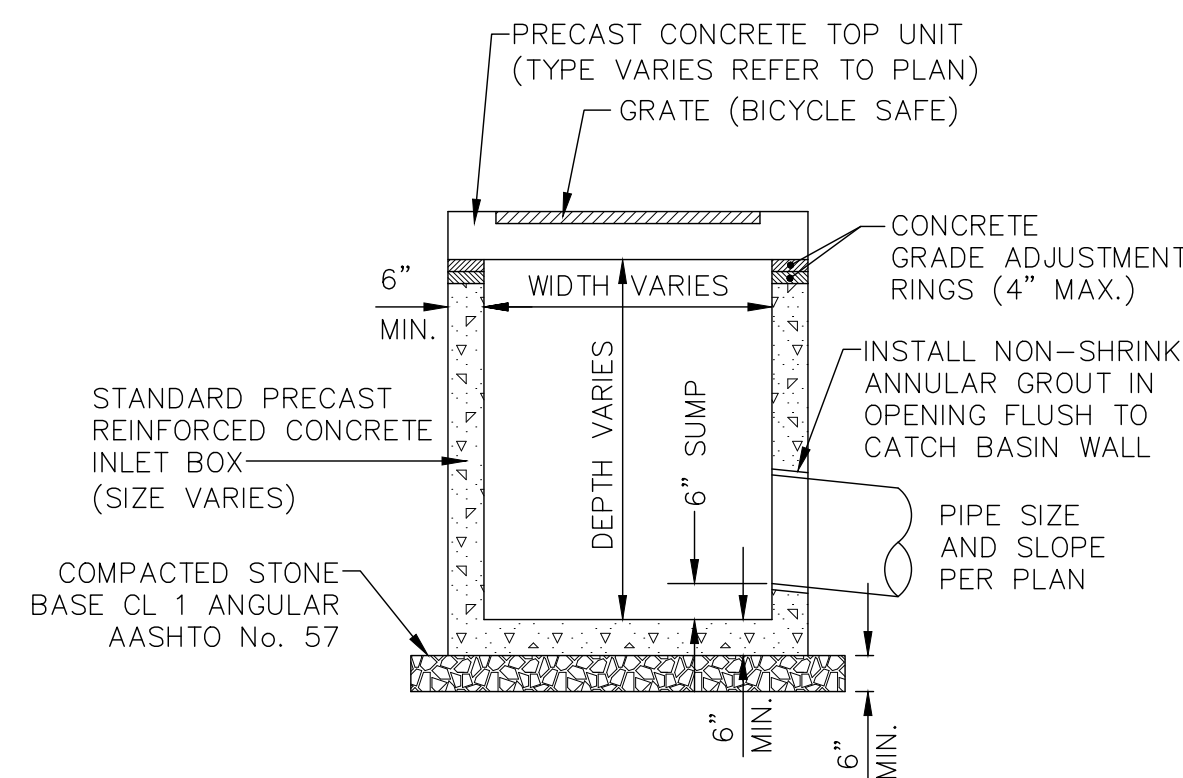
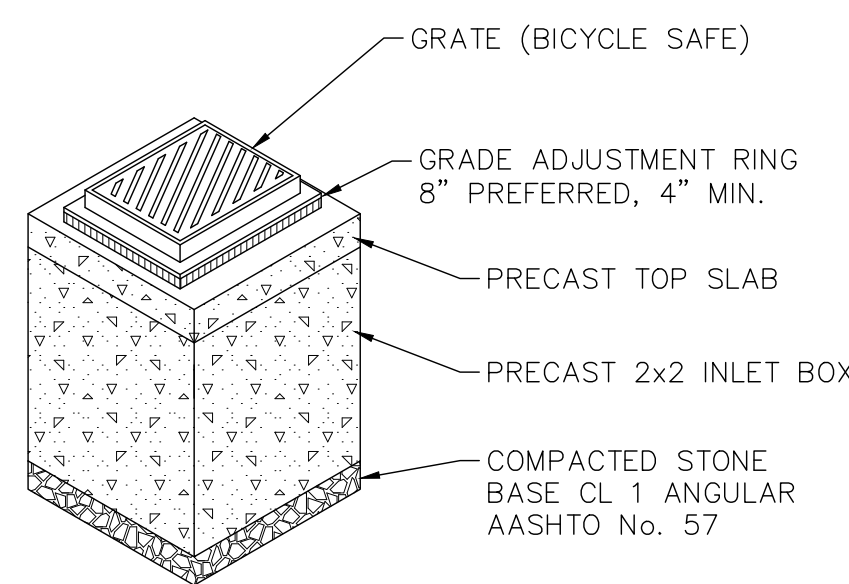


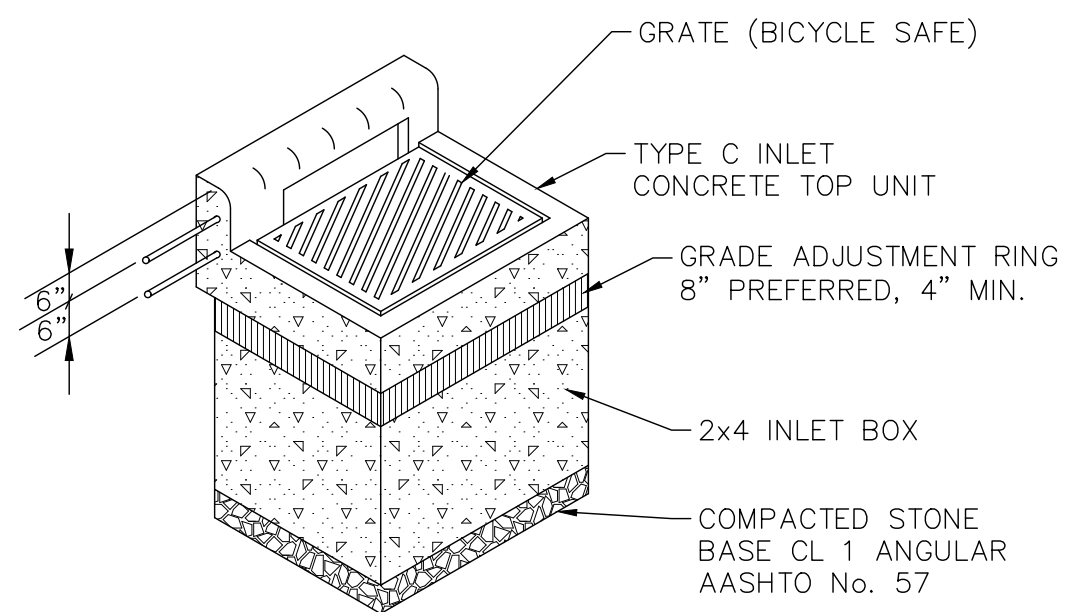
**2x2 TYPE M INLET DETAIL**  
NOT TO SCALE



**PRECAST INLET DETAIL**  
NOT TO SCALE



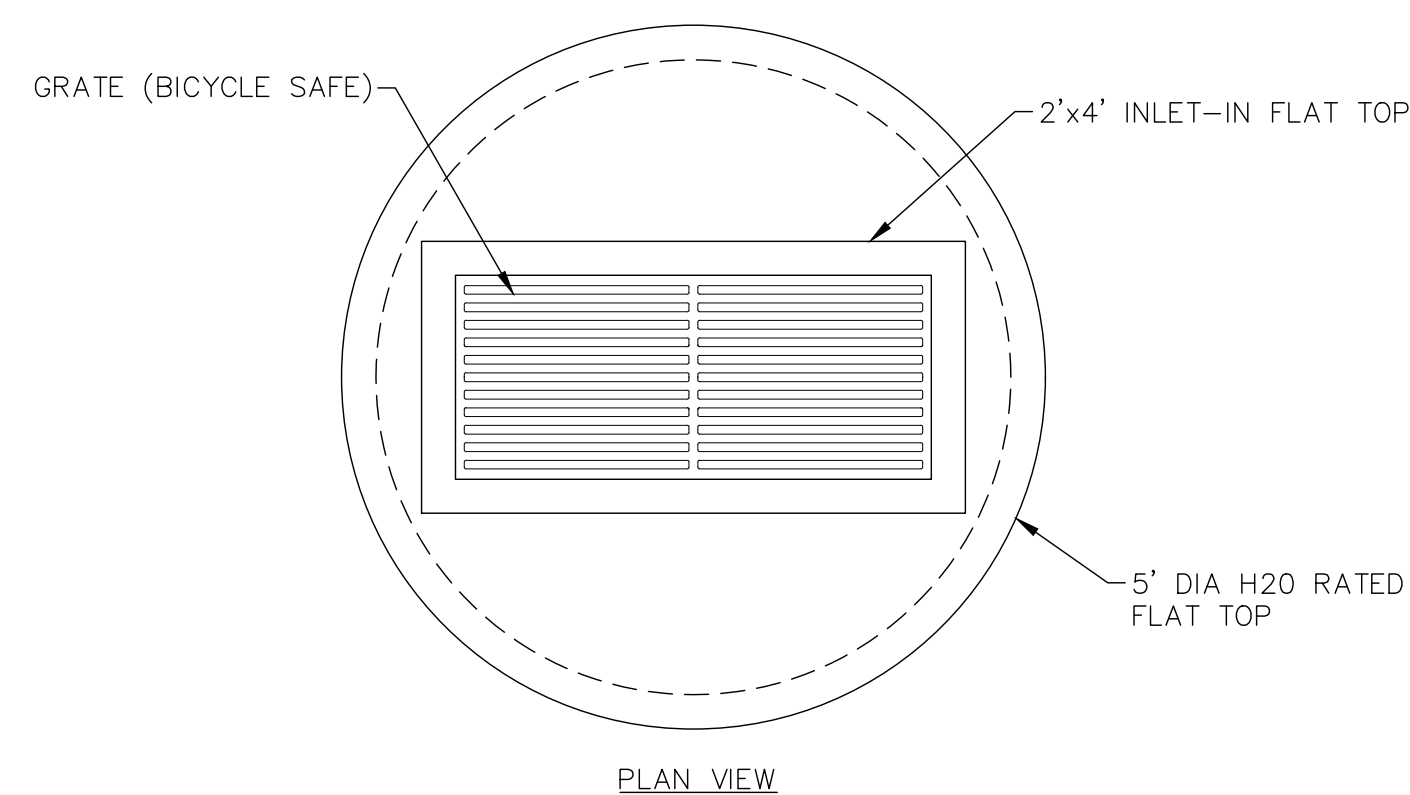
**2x2 TYPE M INLET DETAIL**  
NOT TO SCALE



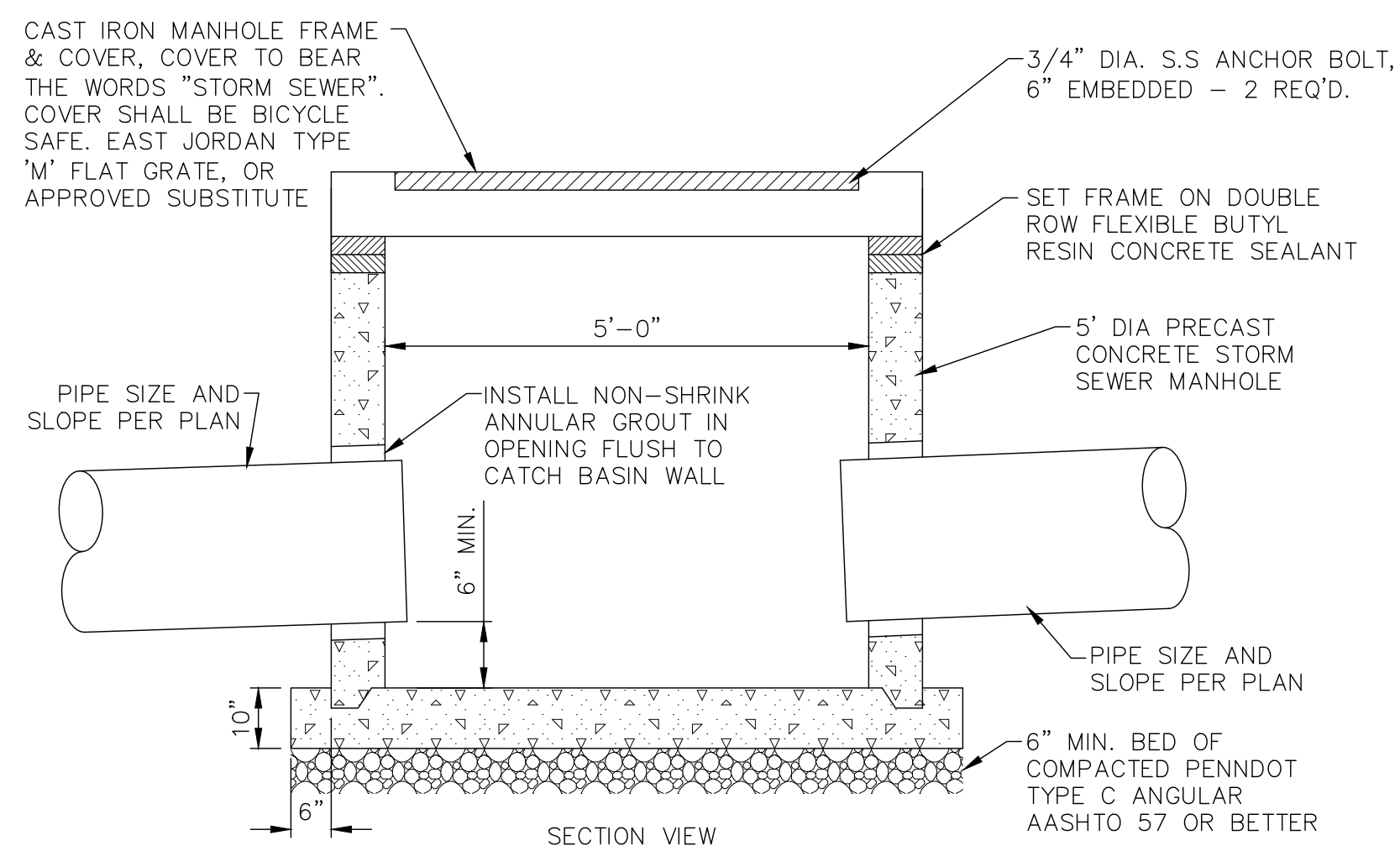
**TYPE C INLET DETAIL**  
NOT TO SCALE

**CATCH BASIN GENERAL NOTES:**

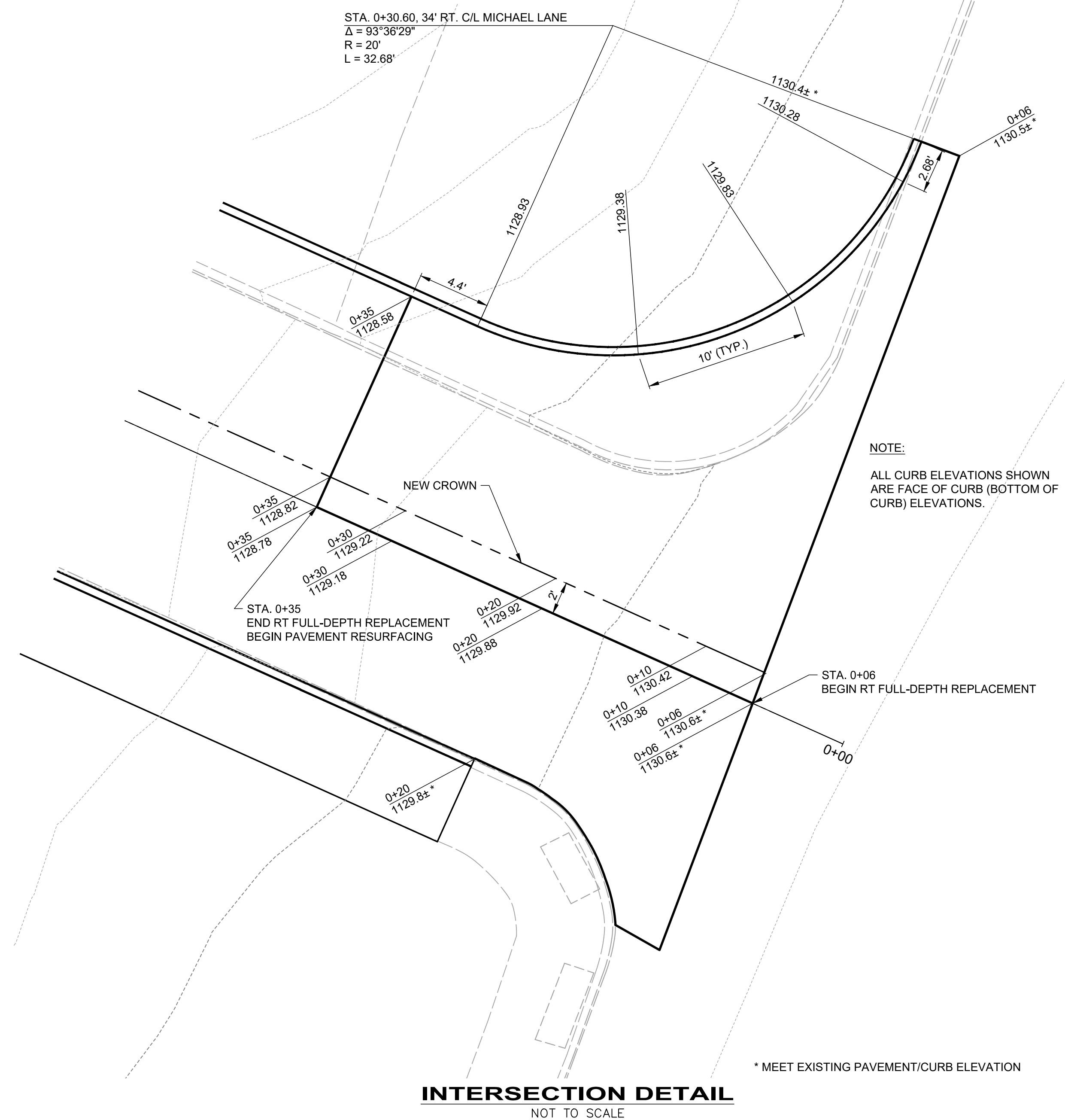
1. ALL CONSTRUCTION SHALL BE IN ACCORDANCE WITH PENNDOT PUBLICATION 408, SECTION 605 AND STANDARDS FOR ROADWAY CONSTRUCTION, RC-45 & RC-46, CURRENT EDITION. CONTRACTOR SHALL VERIFY INLET BOX SIZING BASED ON PIPE SIZES AND ALIGNMENT PRIOR TO ORDERING PRECAST STRUCTURES.
2. ALL CONCRETE SHALL BE SEALED WITH POLYSEAL OR APPROVED EQUAL.
3. NO PIPE SHALL ENTER AN INLET BOX AT THE CORNER.
4. ALL BASINS SHALL HAVE MINIMUM 6" DEEP SUMP BENEATH LOWEST PIPE INVERT.



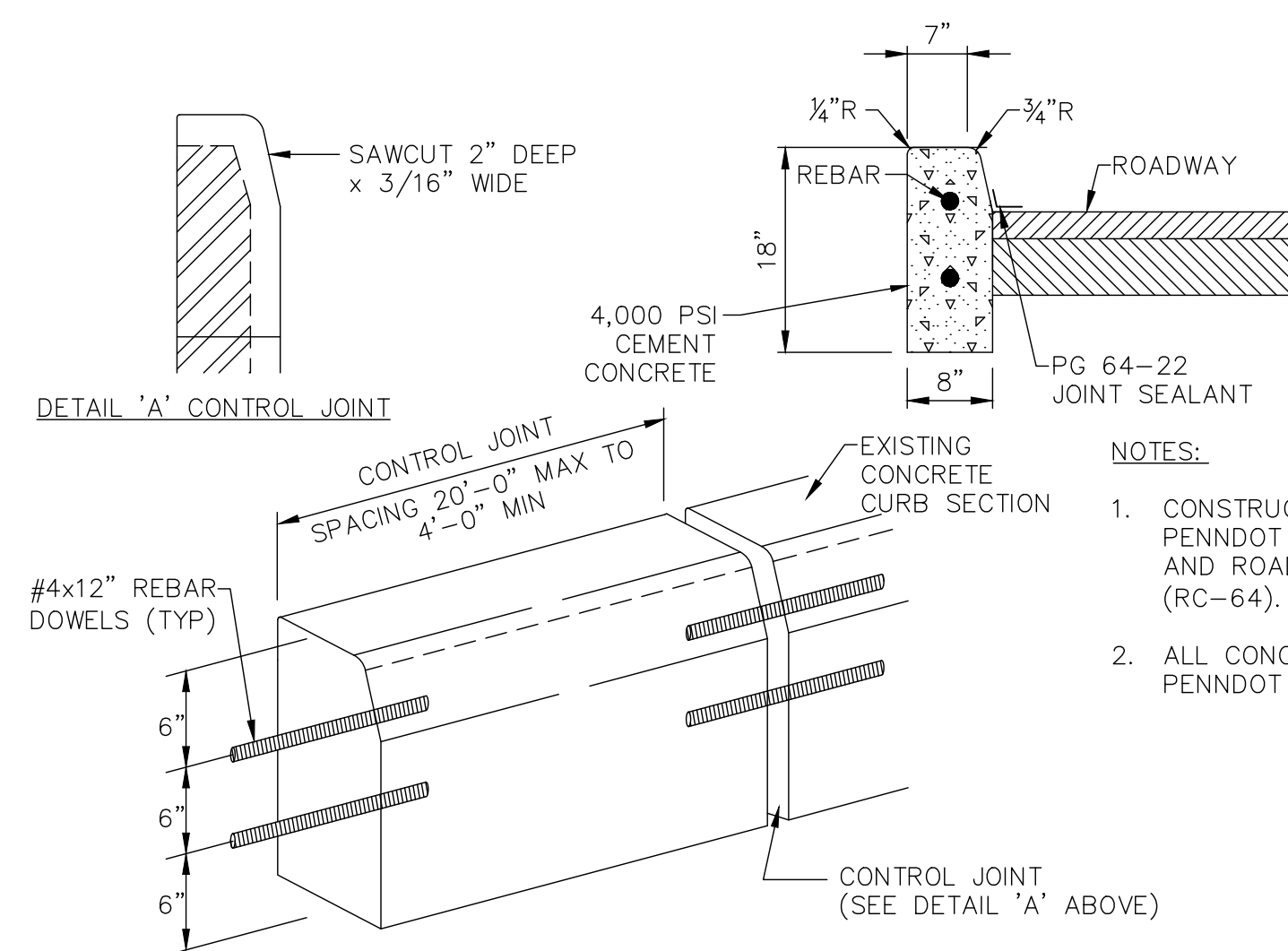
PLAN VIEW



**5' DIA STORM SEWER MANHOLE DETAIL**  
NOT TO SCALE

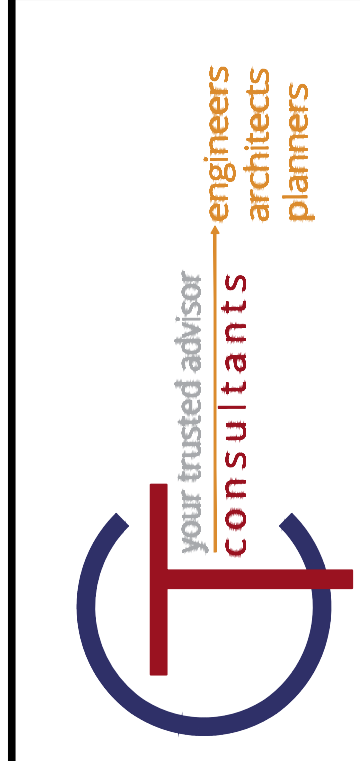
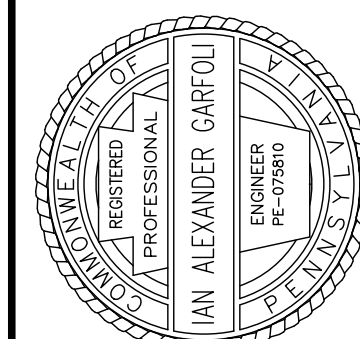


**INTERSECTION DETAIL**  
NOT TO SCALE



**CONCRETE CURB DETAIL**  
NOT TO SCALE

- NOTES:
1. CONSTRUCT CURBING IN ACCORDANCE WITH PENNDOT SPECIFICATIONS PUBLICATION 408 AND ROADWAY CONSTRUCTION DRAWINGS (RC-64).
  2. ALL CONCRETE SHALL BE SEALED AS PER PENNDOT PUB. 408 SECTION 711.2.g.



ISSUED FOR:	BID SET:	NO.	REVISION:	DATE:
AS SHOWN	1/20/2020			
DESIGNED BY: JES / SAS	CHECKED BY: IAG			

**CITY OF HERMITAGE**  
2020 NEIGHBORHOOD INVESTMENT PROGRAM  
MERCER COUNTY HERMITAGE, PENNSYLVANIA  
**CONSTRUCTION DETAILS**

PROJECT NO.	180302
DISCIPLINE	CIVIL
SHEET NAME	CD-3
SHEET	22
OF	23