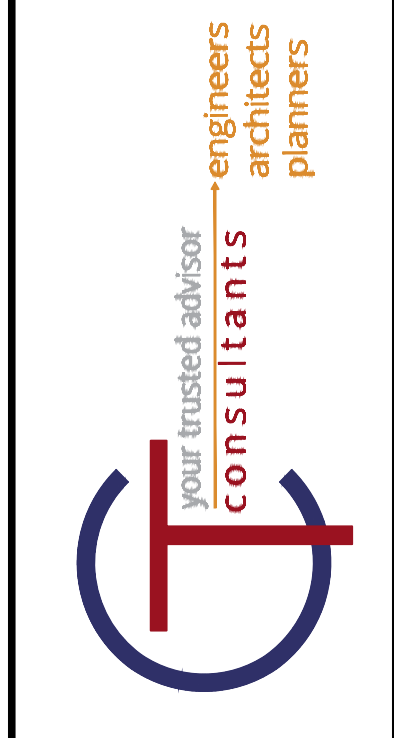
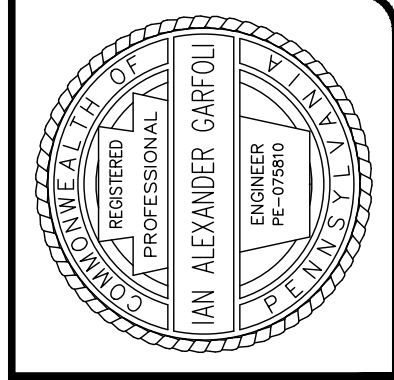
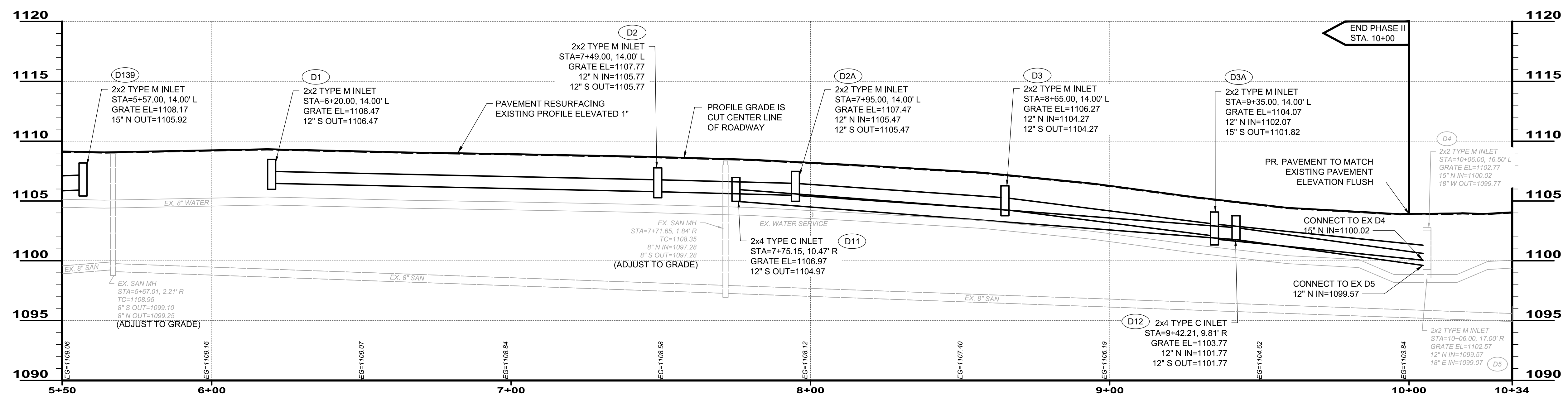
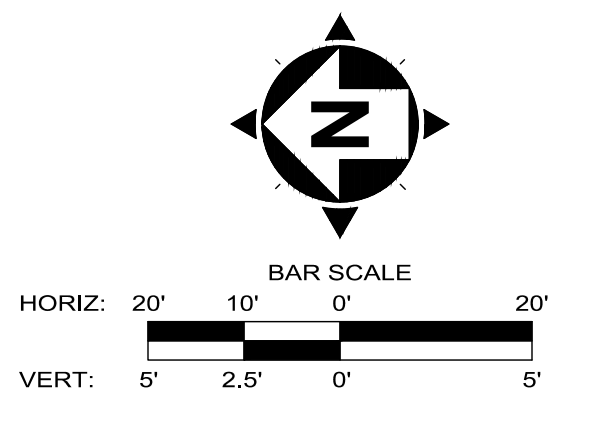


- NOTE:**
- CATCH BASINS SHALL CONTAIN A 6" SUMP FOR CAPTURING GRIT.
  - STORM SEWER STRUCTURE CALLOUTS IN PLAN VIEW CORRESPOND TO THE CALLOUTS IN PROFILE VIEW.
  - DRIVEWAY APRONS TO BE REPLACED BACK TO THE LIMITS SHOWN ON THIS SHEET.
  - TRENCH DRAINS SHALL BE CONNECTED TO THE NEAREST CATCH BASIN AT A 1% MIN. SLOPE.

- CODED NOTES:**
- 01 ASPHALT APRON/DRIVEWAY
  - 02 CONCRETE APRON/DRIVEWAY W/ 18" ASPHALT STRIP
  - 03 PR. CONCRETE SIDEWALK TO MEET PR. CONCRETE CURB
  - 04 ROADWAY EXTENSION WITH CONCRETE CURB
  - 05 CONCRETE CURB END TRANSITION
  - 06 DEPRESSED CONCRETE CURB AT DRIVEWAY



ISSUED FOR:	BID SET	NO.	REVISION	DATE
CITY OF HERMITAGE	1/20/2020			
2020 NEIGHBORHOOD INVESTMENT PROGRAM	AS SHOWN			
SCALE:	JES			
DESIGNED BY:	JES / SAS			
DRAWN BY:	JES / SAS			
CHECKED BY:	IAG			

**CITY OF HERMITAGE**  
**2020 NEIGHBORHOOD INVESTMENT PROGRAM**  
**MERCER COUNTY HERMITAGE, PENNSYLVANIA**  
**PLAN & PROFILE**  
**ARMAND AVENUE**  
**STA. 5+50 TO STA. 10+34.45**

PROJECT NO.	180302
DISCIPLINE	CIVIL
SHEET NAME	PL-4
SHEET	17
OF	23