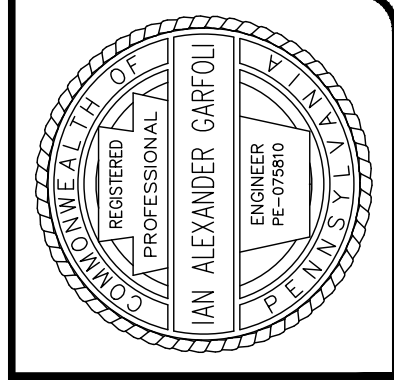
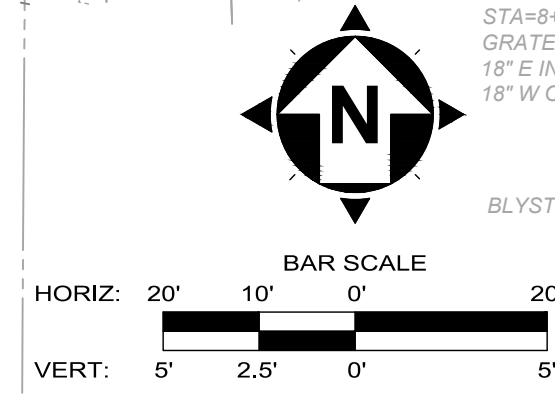
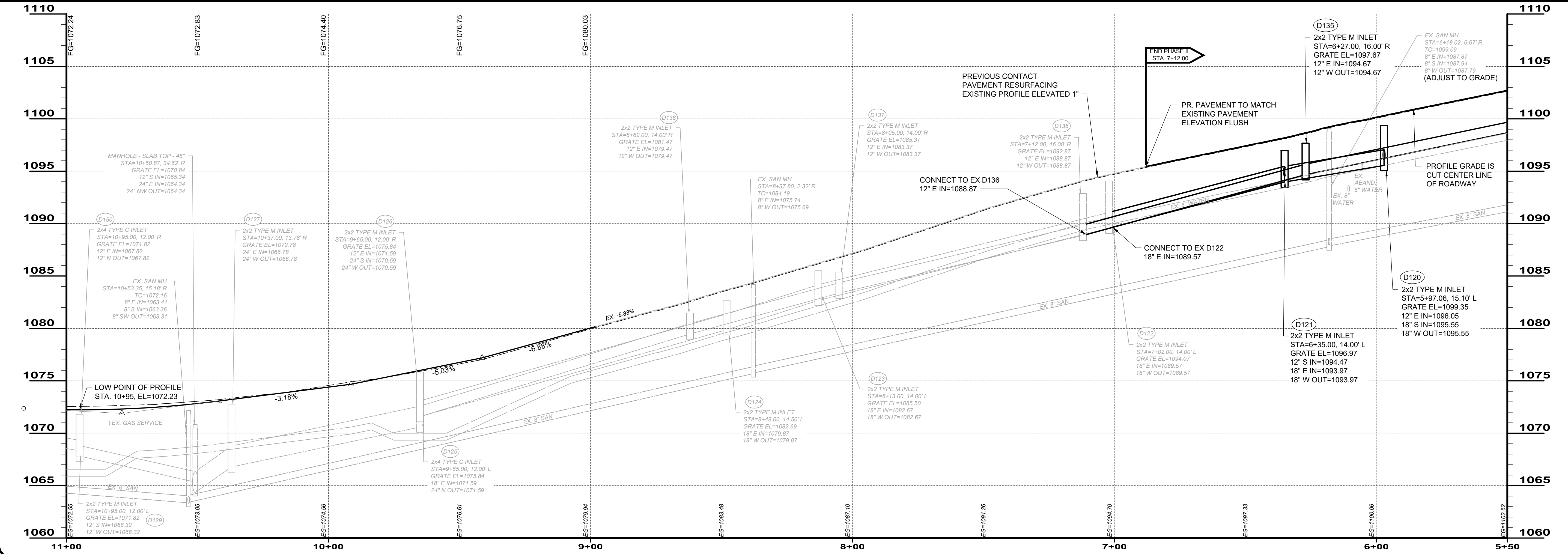


- NOTE:**
- CATCH BASINS SHALL CONTAIN A 6" SUMP FOR CAPTURING GRIT.
  - STORM SEWER STRUCTURE CALLOUTS IN PLAN VIEW CORRESPOND TO THE CALLOUTS IN PROFILE VIEW.
  - DRIVEWAY APRONS TO BE REPLACED BACK TO THE LIMITS SHOWN ON THIS SHEET.

- CODED NOTES:**
- 01 ASPHALT APRON/DRIVEWAY
  - 02 CONCRETE APRON/DRIVEWAY W/ 18" ASPHALT STRIP



| NO. | REVISION | DATE |
|-----|----------|------|
|     |          |      |
|     |          |      |
|     |          |      |



| ISSUED FOR: | BID SET |
|-------------|---------|
|             |         |

| ISSUE DATE: | SCALE:   | DESIGNED BY: | DRAWN BY: | CHECKED BY: |
|-------------|----------|--------------|-----------|-------------|
| 1/20/2020   | AS SHOWN | JES          | JES/SAS   | IAG         |

**CITY OF HERMITAGE**  
**2020 NEIGHBORHOOD INVESTMENT PROGRAM**  
**MERCER COUNTY HERMITAGE, PENNSYLVANIA**  
**PLAN & PROFILE**  
**MICHAEL/CARROLL LANE**  
**STA. 5+50 TO STA. 11+00**

| PROJECT NO. | DISCIPLINE | SHEET NAME | SHEET | OF |
|-------------|------------|------------|-------|----|
| 180302      | CIVIL      | PL-2       | 15    | 23 |