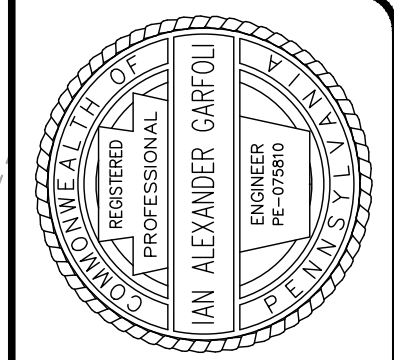
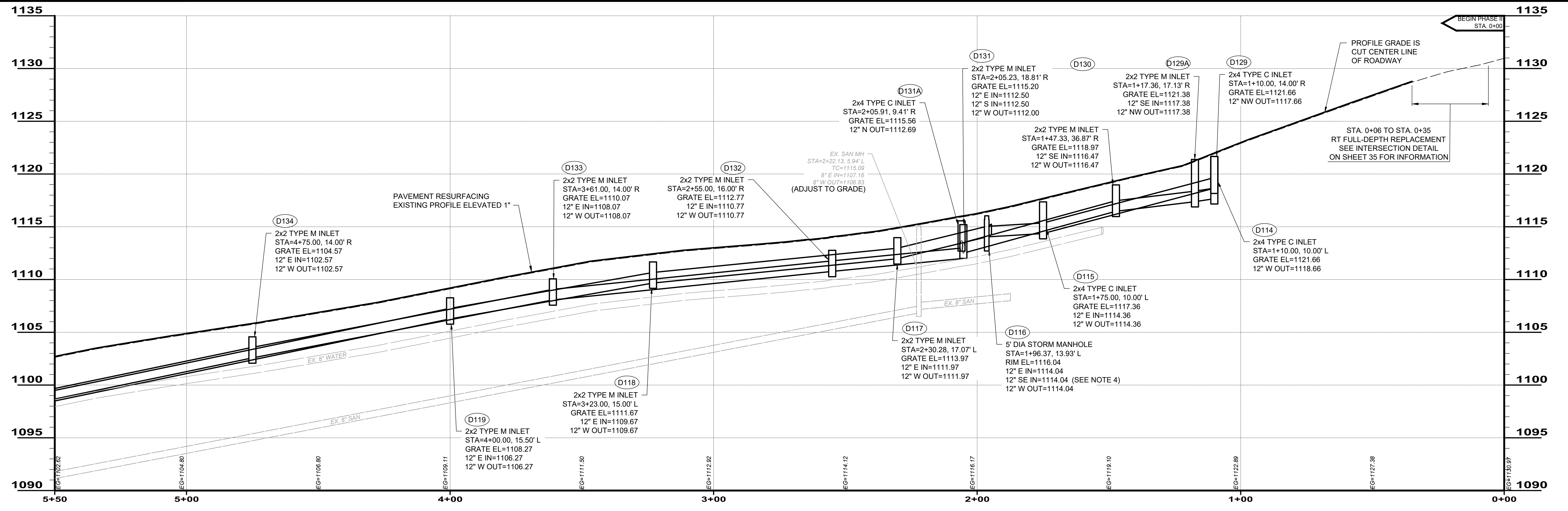
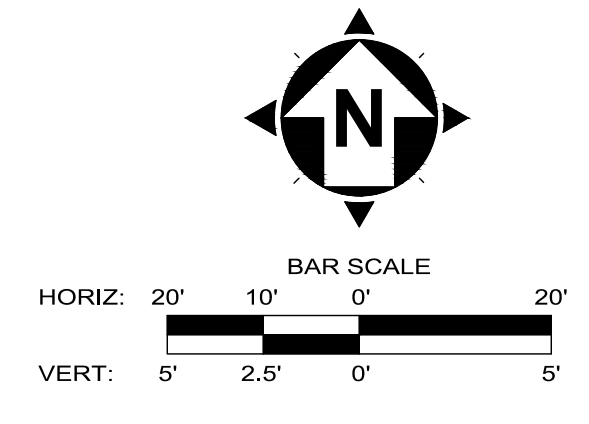


CODED NOTES:

- 01 ASPHALT APRON/DRIVEWAY
- 02 CONCRETE APRON/DRIVEWAY W/ 18" ASPHALT STRIP

NOTES:

1. CATCH BASINS SHALL CONTAIN A 6" SUMP FOR CAPTURING GRIT.
2. STORM SEWER STRUCTURE CALLOUTS IN PLAN VIEW CORRESPOND TO THE CALLOUTS IN PROFILE VIEW.
3. DRIVEWAY APRONS TO BE REPLACED BACK TO THE LIMITS SHOWN ON THIS SHEET.
4. EXTEND EXISTING PIPE TO PROPOSED MANHOLE. INVERT OF EXISTING 12" PIPE NOT SURVEYED. CONTRACTOR TO FIELD VERIFY.
5. STA. 0+06: BEGIN RT FULL-DEPTH PAVEMENT REPLACEMENT. SEE INTERSECTION DETAIL ON SHEET CD-3.



NO.	REVISION	DATE

CITY OF HERMITAGE
2020 NEIGHBORHOOD INVESTMENT PROGRAM
MERCER COUNTY HERMITAGE, PENNSYLVANIA

PLAN & PROFILE
MICHAEL LANE
STA. 0+00 TO STA. 5+50

PROJECT NO. **180302**
 DISCIPLINE **CIVIL**
 SHEET NAME **PL-1**
 SHEET **14** OF **23**