



**DEMOLITION CODED NOTES:**

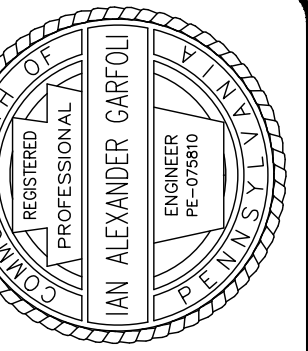
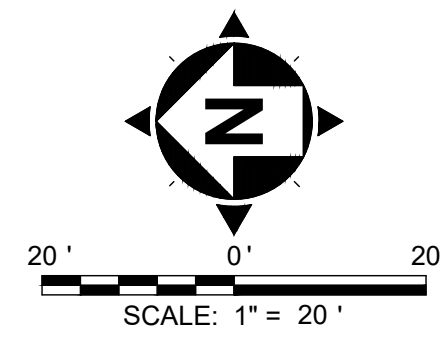
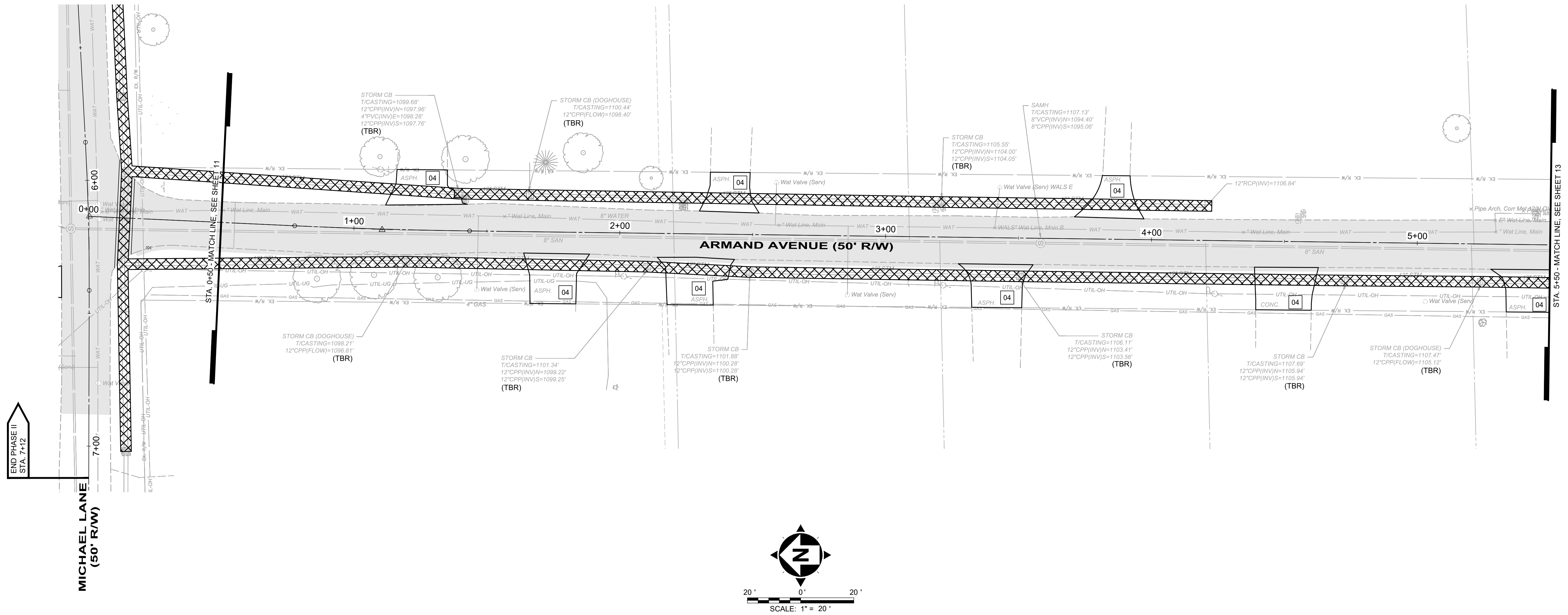
- 01 NEAT-LINE SAW CUT ROADWAY
- 02 NOT USED
- 03 EXISTING CURB TO BE REPLACED AT ALL LOCATIONS WHERE DAMAGED DURING REMOVAL OF EXISTING STORM SEWER
- 04 DRIVEWAY APRONS  
-CONCRETE: REMOVE TO RW OR EXPANSION JOINT  
-ASPHALT: REMOVE DRIVEWAY/APRON  
-REMOVE: DRIVEWAY/APRON
- 05 SIDEWALK TO BE REMOVED
- 06 CURB TO BE REMOVED

**DEMOLITION LEGEND:**

-  DENOTES STORM SEWER TO BE REMOVED
-  PAVEMENT TO BE MILLED - MICHAEL LANE STA. 0+06 TO STA. 0+35 LT; STA. 0+35 TO STA. 6+50  
ARMAND AVENUE STA. 0+00 TO STA. 10+00
- (TBR) TO BE REMOVED

**NOTE:**

FULL DEPTH PAVEMENT REPLACEMENT LIMITS - MICHAEL LANE, STA. 0+06 TO STA. 0+35 RT



| NO. | REVISION | DATE |
|-----|----------|------|
|     |          |      |
|     |          |      |
|     |          |      |
|     |          |      |

**CITY OF HERMITAGE**  
**2020 NEIGHBORHOOD INVESTMENT PROGRAM**  
**MERCER COUNTY HERMITAGE, PENNSYLVANIA**  
**DEMOLITION PLAN**  
**ARMAND AVENUE**  
**STA. 0+00 TO STA. 5+50**

|             |        |
|-------------|--------|
| PROJECT NO. | 180302 |
| DISCIPLINE  | CIVIL  |
| SHEET NAME  | DP-3   |
| SHEET       | 12     |
| OF          | 23     |