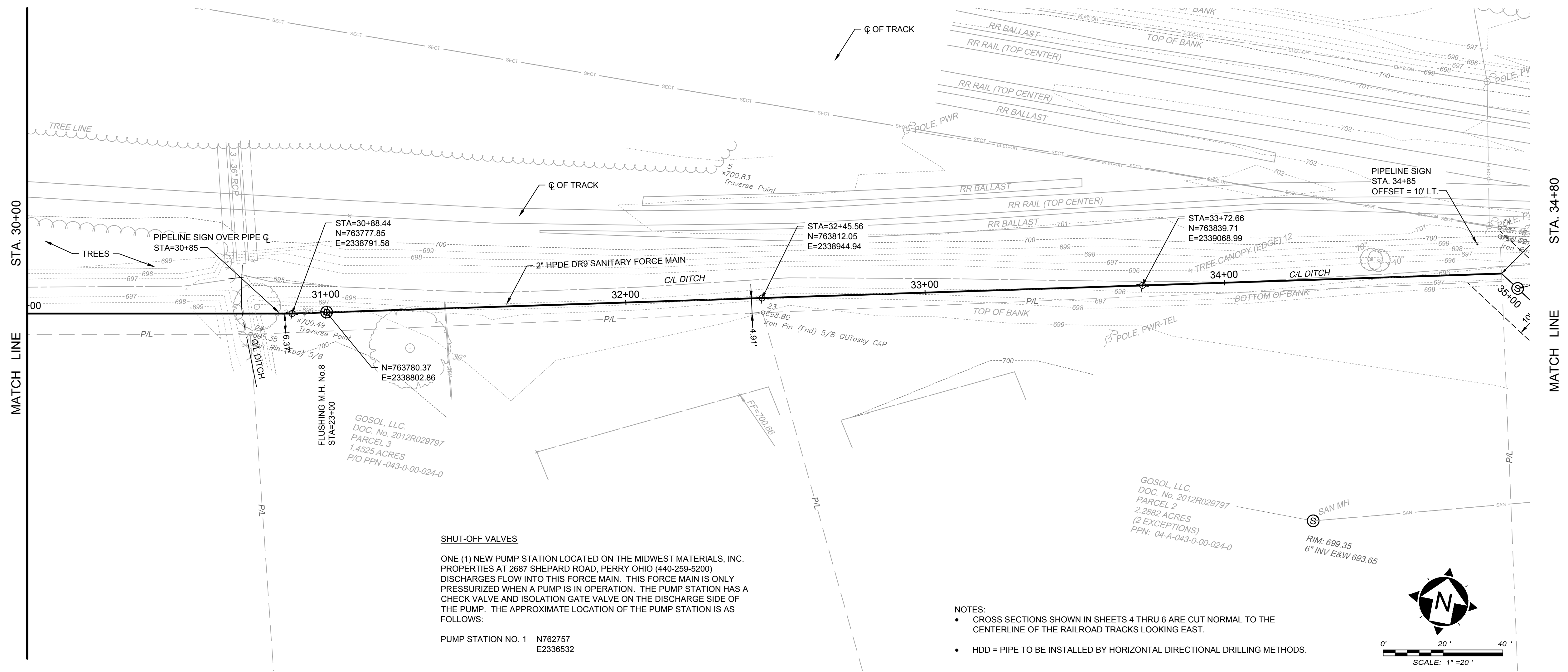




REVISIONS		ISSUE DATE:	AS NOTED	DESIGNED BY:	GS	RLM	GS
REV.	DESCRIPTION	DATE					

**PERRY JOINT ECONOMIC DEVELOPMENT DISTRICT
MIDWEST MATERIALS SANITARY
SEWAGE IMPROVEMENT**
LAKE COUNTY
PERRY, OHIO
PLAN AND PROFILE
PLAN & PROFILE STA. 30+00 TO 34+80

PROJECT NO.	170415
DISCIPLINE	CIVIL
SHEET NAME	PP
SHEET	13
OF	22



SHUT-OFF VALVES
ONE (1) NEW PUMP STATION LOCATED ON THE MIDWEST MATERIALS, INC. PROPERTIES AT 2887 SHEPARD ROAD, PERRY OHIO (440-259-5200) DISCHARGES FLOW INTO THIS FORCE MAIN. THIS FORCE MAIN IS ONLY PRESSURIZED WHEN A PUMP IS IN OPERATION. THE PUMP STATION HAS A CHECK VALVE AND ISOLATION GATE VALVE ON THE DISCHARGE SIDE OF THE PUMP. THE APPROXIMATE LOCATION OF THE PUMP STATION IS AS FOLLOWS:

PUMP STATION NO. 1 N762757
E2336532

- NOTES:**
- CROSS SECTIONS SHOWN IN SHEETS 4 THRU 6 ARE CUT NORMAL TO THE CENTERLINE OF THE RAILROAD TRACKS LOOKING EAST.
 - HDD = PIPE TO BE INSTALLED BY HORIZONTAL DIRECTIONAL DRILLING METHODS.

