



To: All Plan Holders of Record

From: CT Consultants, Inc.
For the Owner

Re: *Addendum No. 2*
Greenspace Trail & Pickleball Courts
City of Highland Heights, KY

Date: November 18, 2024

This Addendum forms a part of the contract documents and modifies the original bidding documents dated October 2024 and all previous addenda, if any. Acknowledge receipt of this addendum in the space provided in the bid forms. Failure to do so may subject the bidder to disqualification.

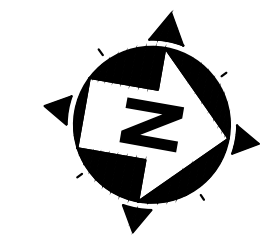
PLANS

Replace plan sheet C5 of C11 with the enclosed plan revised sheet C5 of C11.

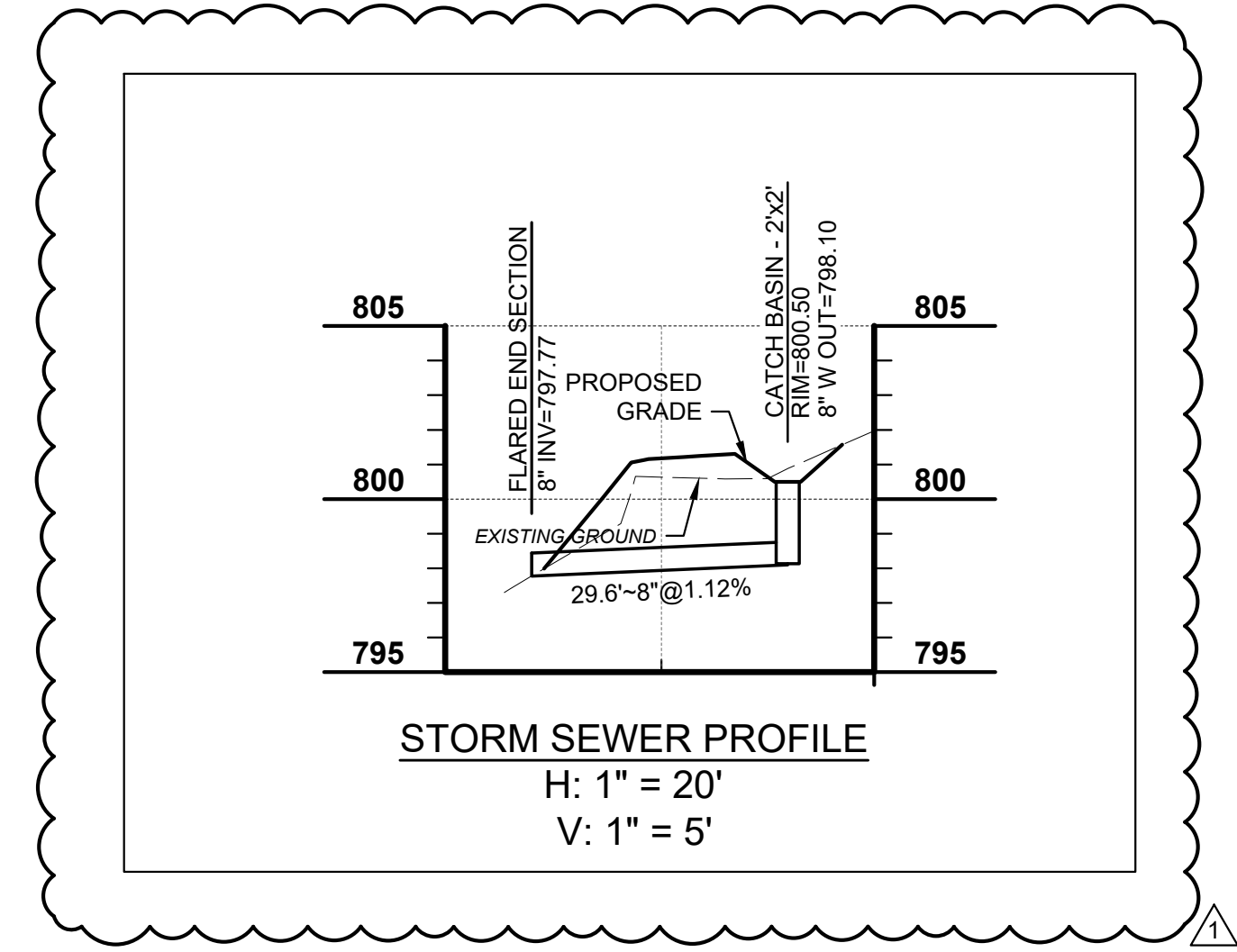
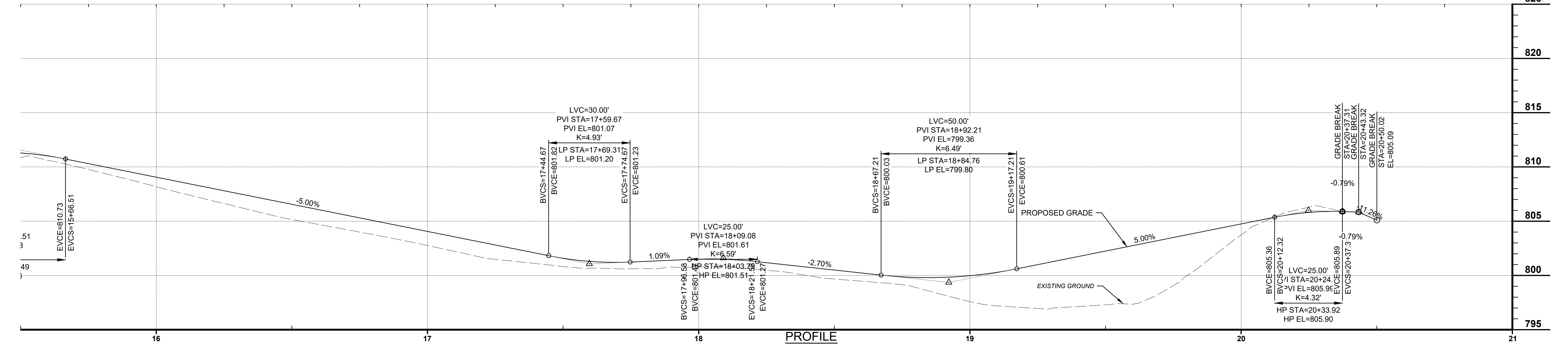
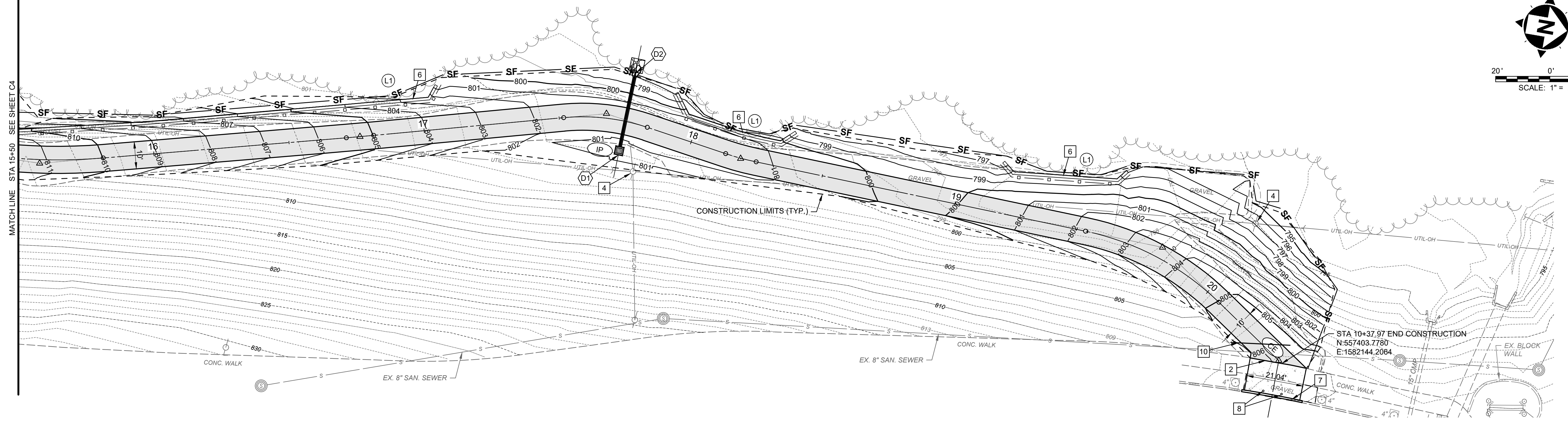
FT:mep

Enclosure

H:\2024\241829\SPEC\Addenda\Addendum 02\Addendum 02.Doc



SCALE: 1" = 20'

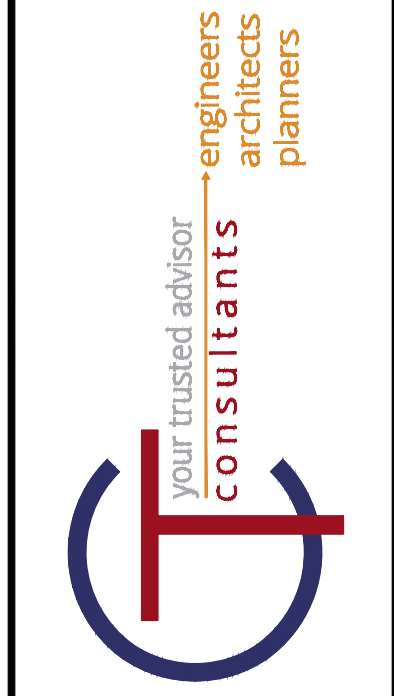


- GENERAL CONSTRUCTION NOTES**
- 2" WIDE PICKLE BALL COURT MARKINGS. SEE DETAIL SHEET.
 - TIE INTO EXISTING SIDEWALK OR TRAIL.
 - 10' HIGH, 5' WIDE CHAIN LINK GATE.
 - PROTECT EXISTING POWER POLE.
 - REMOVE EXISTING VOLLEYBALL POLES AND STAND.
 - INSTALL MODULAR BLOCK RETAINING WALL. SEE DETAIL SHEET. INSTALL WOOD SPLIT RAIL FENCE AT TOP OF WALL.
 - INSTALL ENTRANCE CURB AND GUTTER. SEE DETAIL SHEET.
 - INSTALL 6"x36" REMOVABLE BOLLARD WITH FLUSH MOUNT EMBEDMENT SLEEVE. CONTRACTOR TO PROVIDE SHOP DRAWING.
 - REMOVE 12" CRUSHED AGGREGATE TO USE FOR FILL ALONG SHARED USE PATH. REPLACE AGGREGATE WITH EXCAVATED MATERIALS FROM REMOVED VOLLEYBALL COURTS. ENSURE POSITIVE DRAINAGE ON FINISHED GRADE.
 - INSTALL 2" CONDUIT UNDER PAVEMENT FOR FUTURE LIGHTING.
 - 4' HIGH, 5' WIDE CHAIN LINK GATE.

- STORM SEWER CONSTRUCTION NOTES**
- (D1) CONSTRUCT CATCH BASIN PER DETAIL SHEET.
 - (D2) INSTALL FLARED END SECTION WITH ROCK CHANNEL PROTECTION. SEE DETAILS.
- LANDSCAPING CONSTRUCTION NOTES**
- (L1) PROTECT EXISTING TREES.

HATCH LEGEND

	SHARED USE PATH. SEE DETAIL
	PICKLEBALL COURT, SEE DETAIL
	5' CONCRETE SIDEWALK, SEE DETAIL
	10' TALL BLACK VINYL COATED FENCE, SEE DETAIL
	4' TALL BLACK VINYL COATED FENCE, SEE DETAIL
	WOOD SPLIT RAIL FENCE
	SILT FENCE, SEE DETAIL



ISSUED FOR:	BIDDING NO.	REVISION NO.	DATE
10/29/2024 <td>AS SHOWN <td> <td>11/18/24 </td></td></td>	AS SHOWN <td> <td>11/18/24 </td></td>	<td>11/18/24 </td>	11/18/24
SCALE:	DESIGNED BY:	CHECKED BY:	
	CMB	CMB	
	ADDENDUM #2		

THE COMMONS AT HIGHLAND HEIGHTS
SHARED USE PATH
HIGHLAND HEIGHTS, KY

LONG SHARED USE PATH
PLAN & PROFILE

PROJECT NO.	241829
DISCIPLINE	CIVIL
SHEET NAME	PNP3
SHEET OF	C5 OF C11