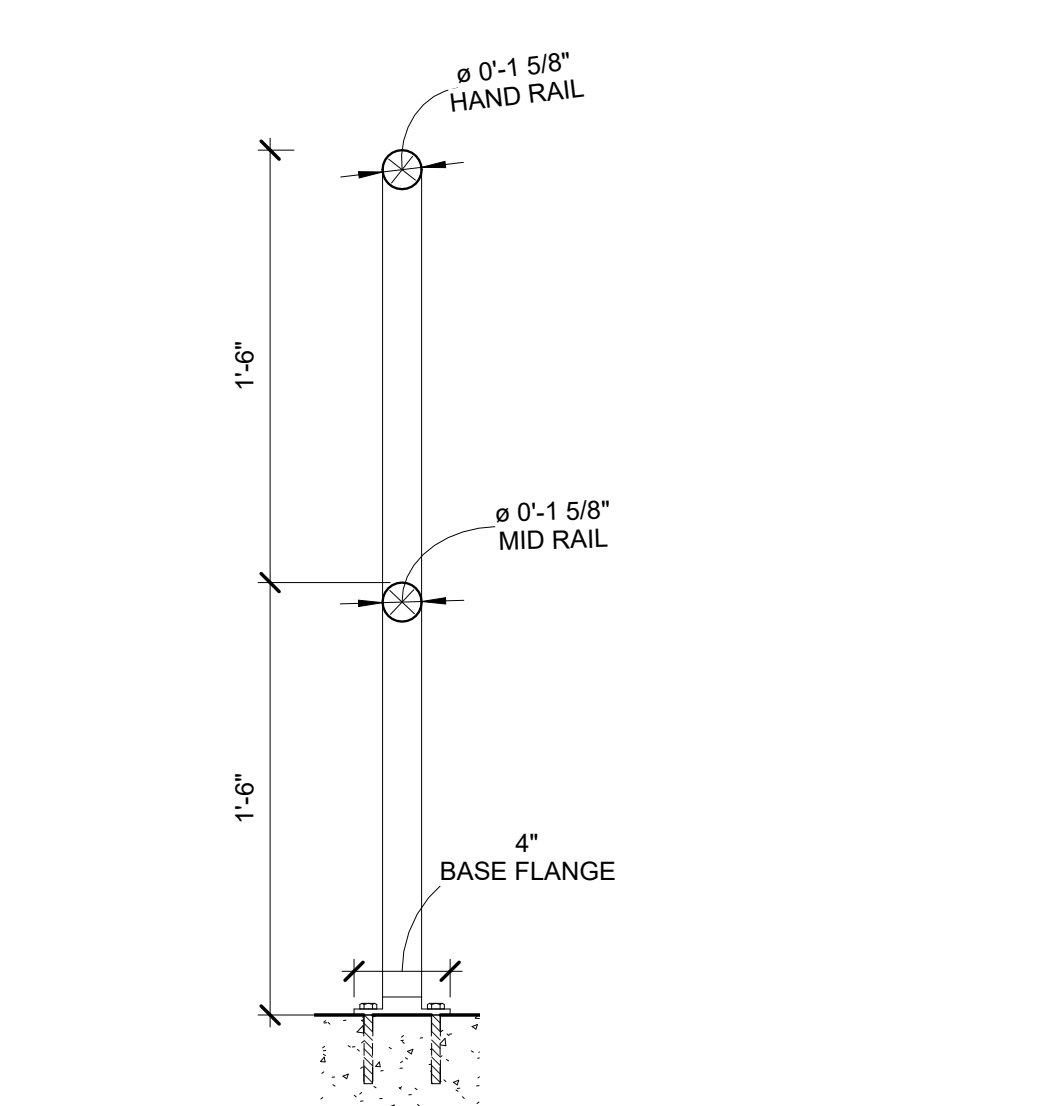
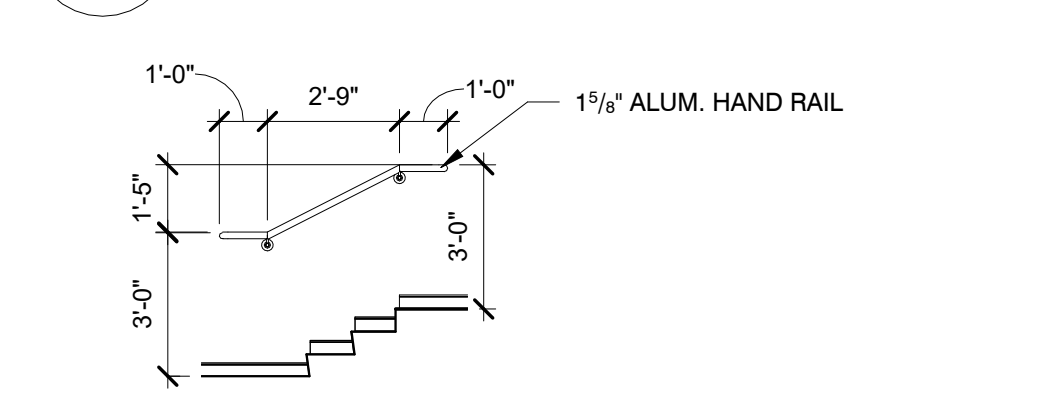


DOOR HARDWARE

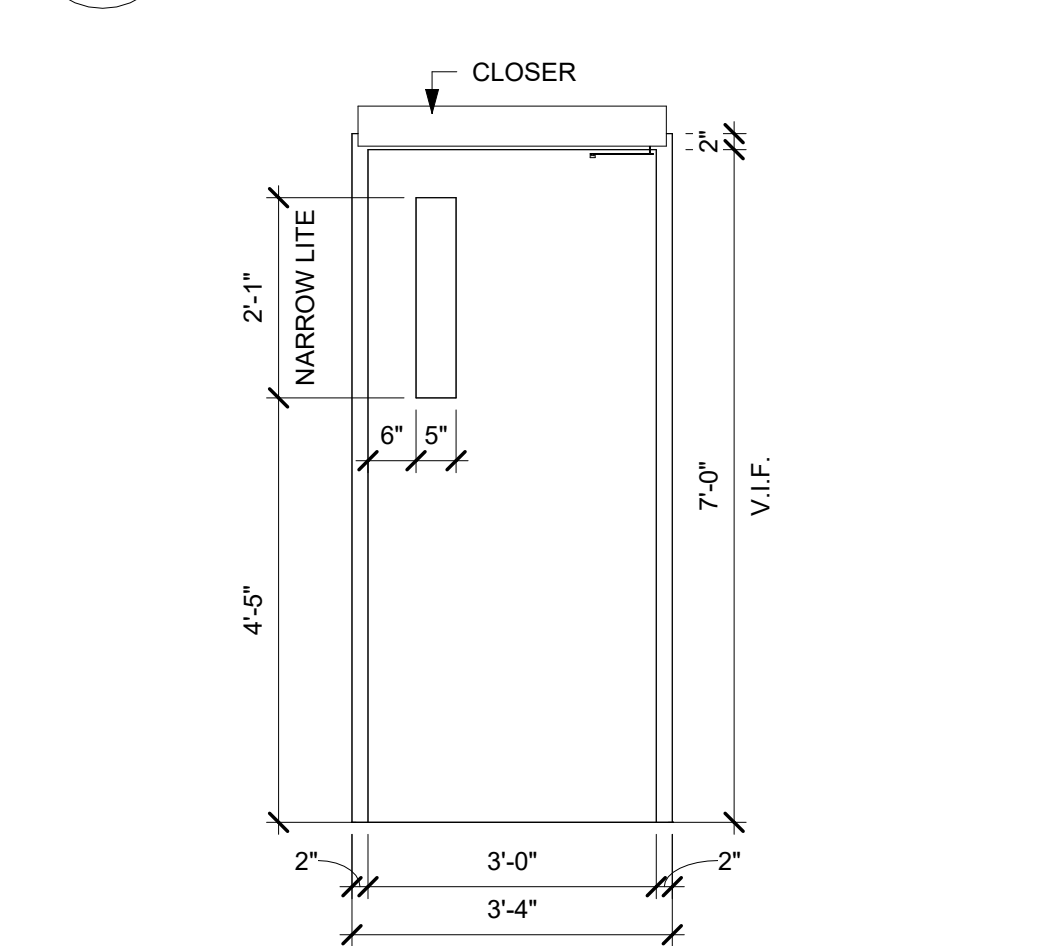
QTY	DESCRIPTION	MODEL NO.	FINISH	MANUFACTURER	REMARKS
HARDWARE SET NO.1					
1	ENTRANCE FUNCTION	65G05KL	26D	SARGENT	DOORS 01 & 02
1	DOOR CLOSER	SW 100	ALUM.	ASSA ABLOY	DOORS 01 & 02
3	HINGES	BB1191 4 1/2" x 4 1/2" NRP	26D	HAGER	DOORS 01 & 02
1	WALL BUMPER	4254	26D	BALDWIN	DOORS 01 ONLY
1	THRESHOLD	8424 x 36"	ALUM.	HAGER	DOORS 02 ONLY
1	DOOR SWEEP	101VA x 36"	ALUM.	NGP	DOORS 01 & 02
1	WEATHERSTRIPPING	160VA	ALUM.	NGP	DOORS 01 & 02
1	ELECTRIC STRIKE	ES110	ALUM.	ASSA ABLOY	DOORS 01 & 02



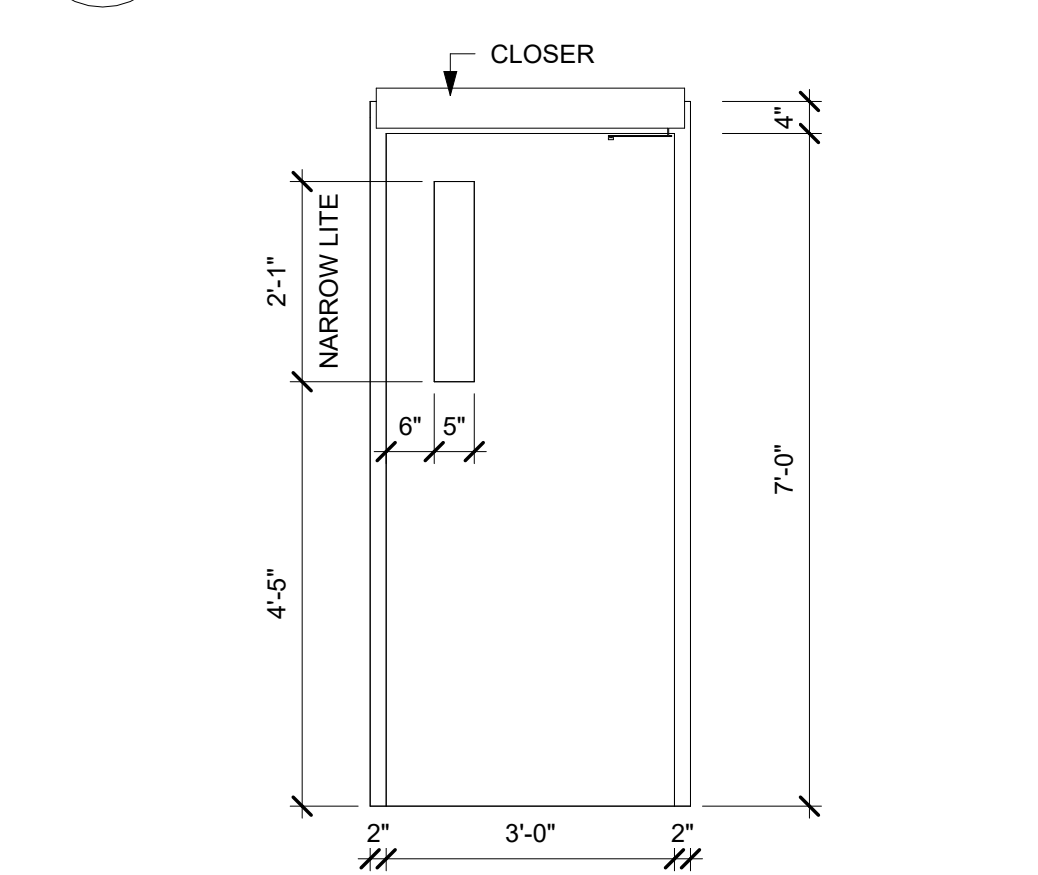
7 RAILING
 A1.01 1 1/2" = 1'-0"



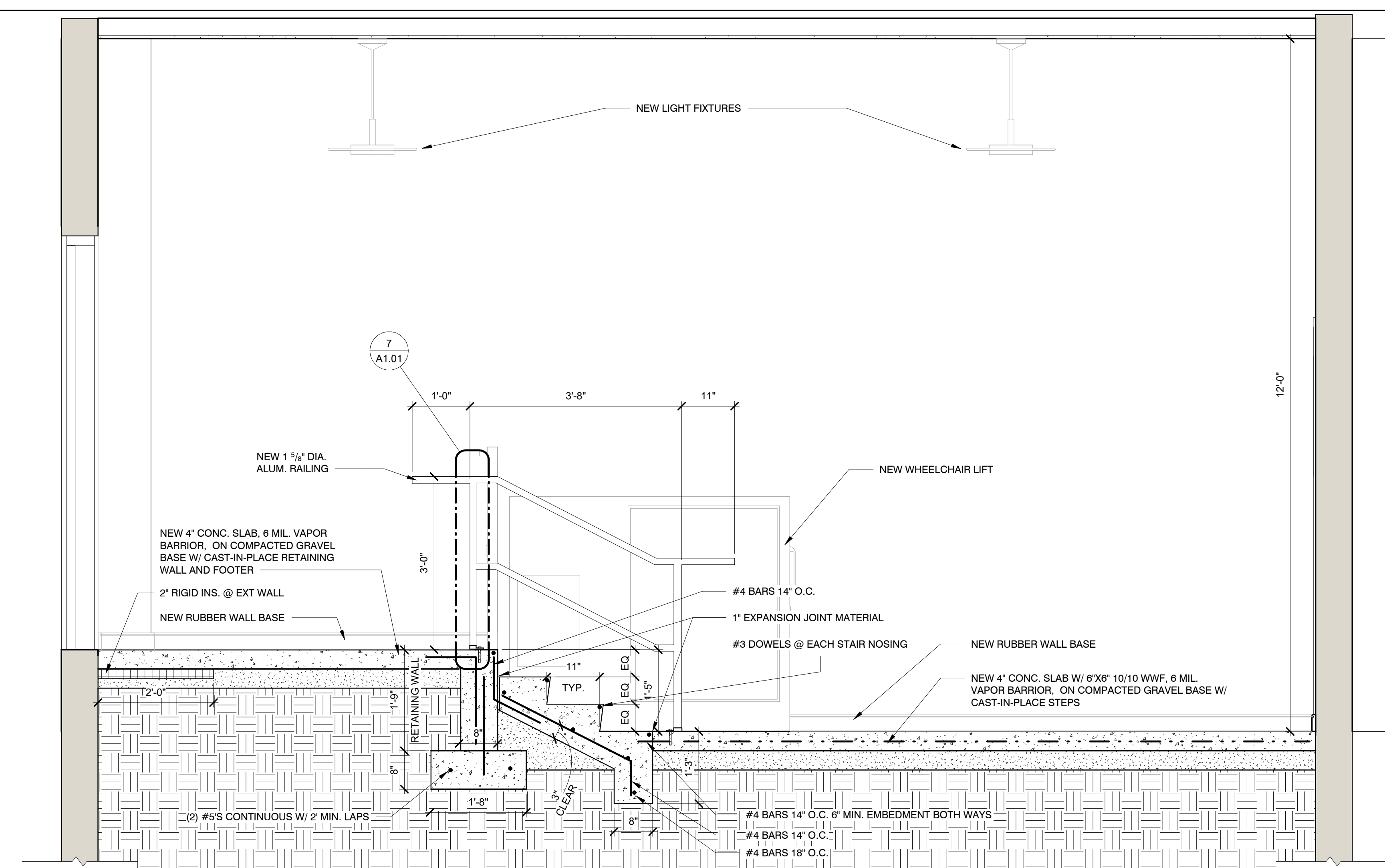
8 HAND RAIL
 A1.01 1/4" = 1'-0"



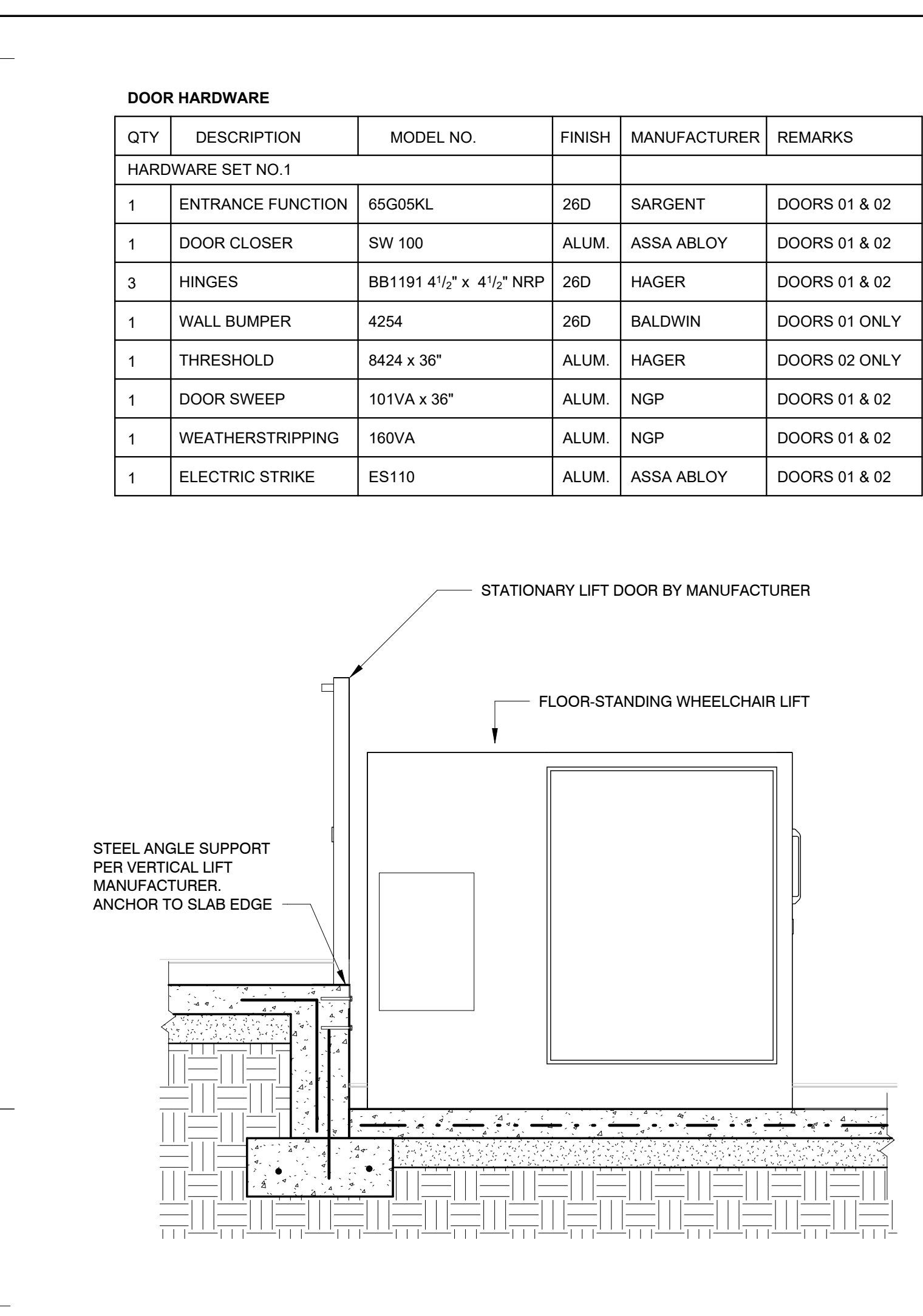
9 INTERIOR DOOR 01
 A1.01 1/2" = 1'-0"



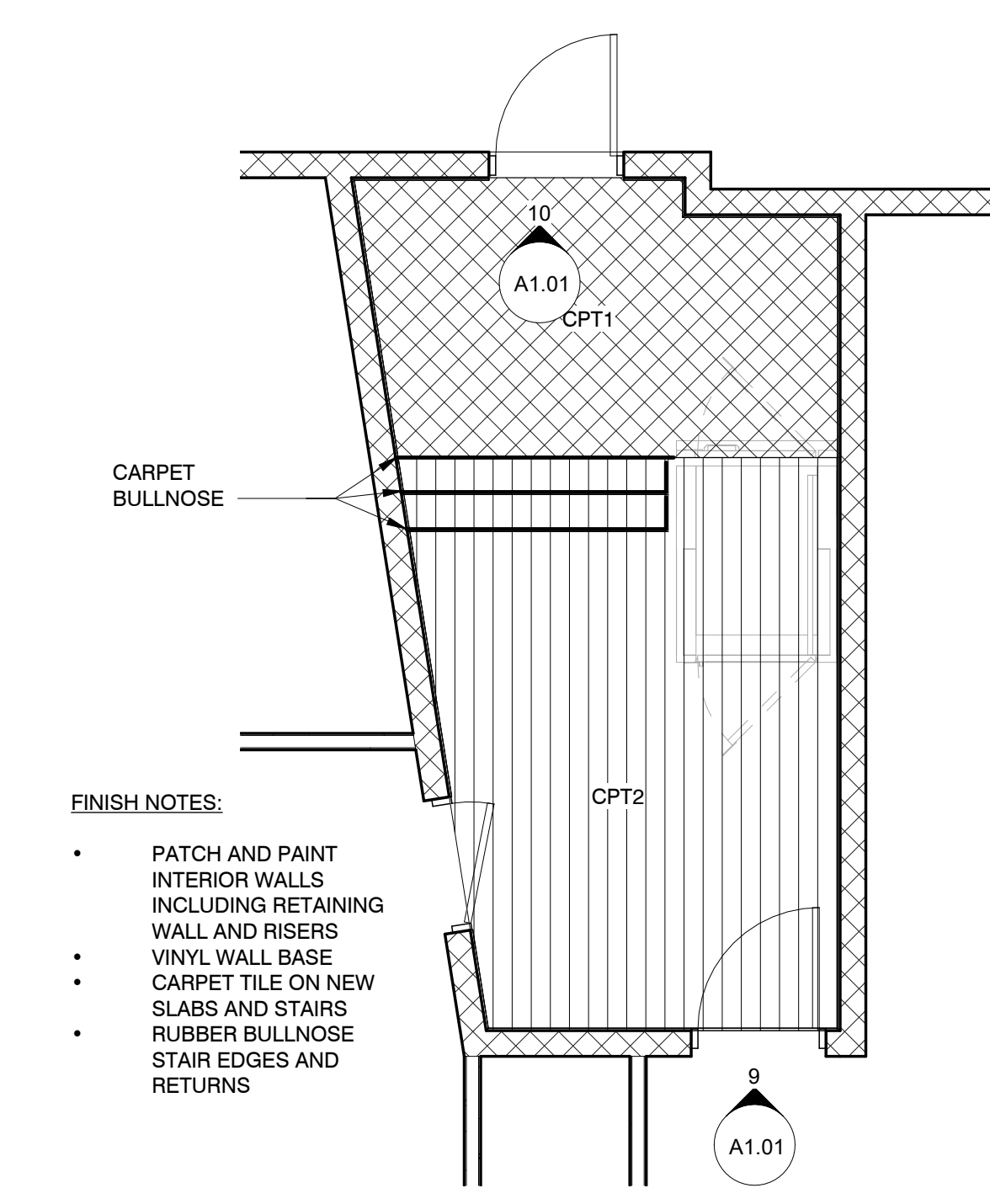
10 EXTERIOR DOOR 02
 A1.01 1/2" = 1'-0"



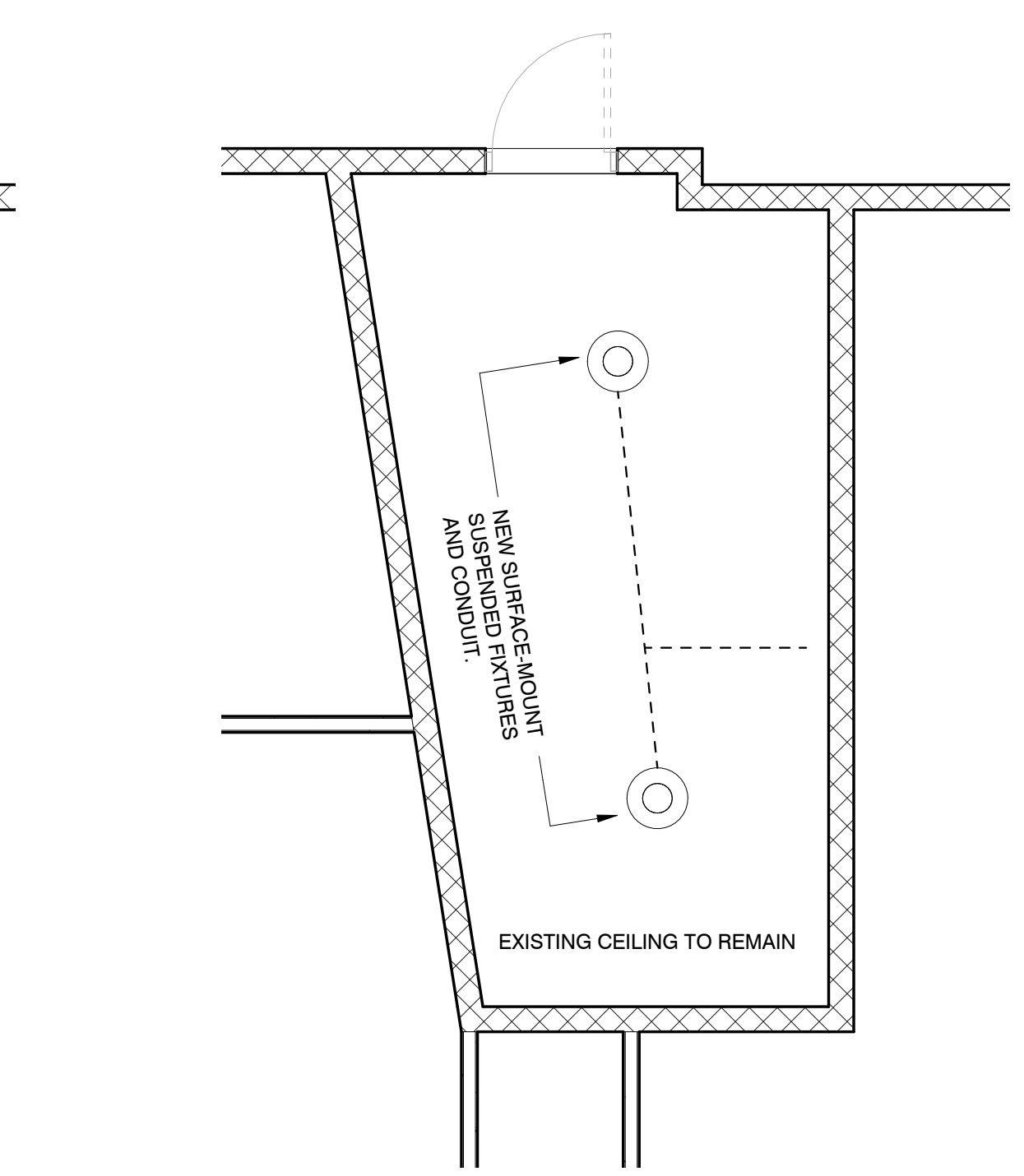
6 STAIR SECTION
 A1.01 3/4" = 1'-0"



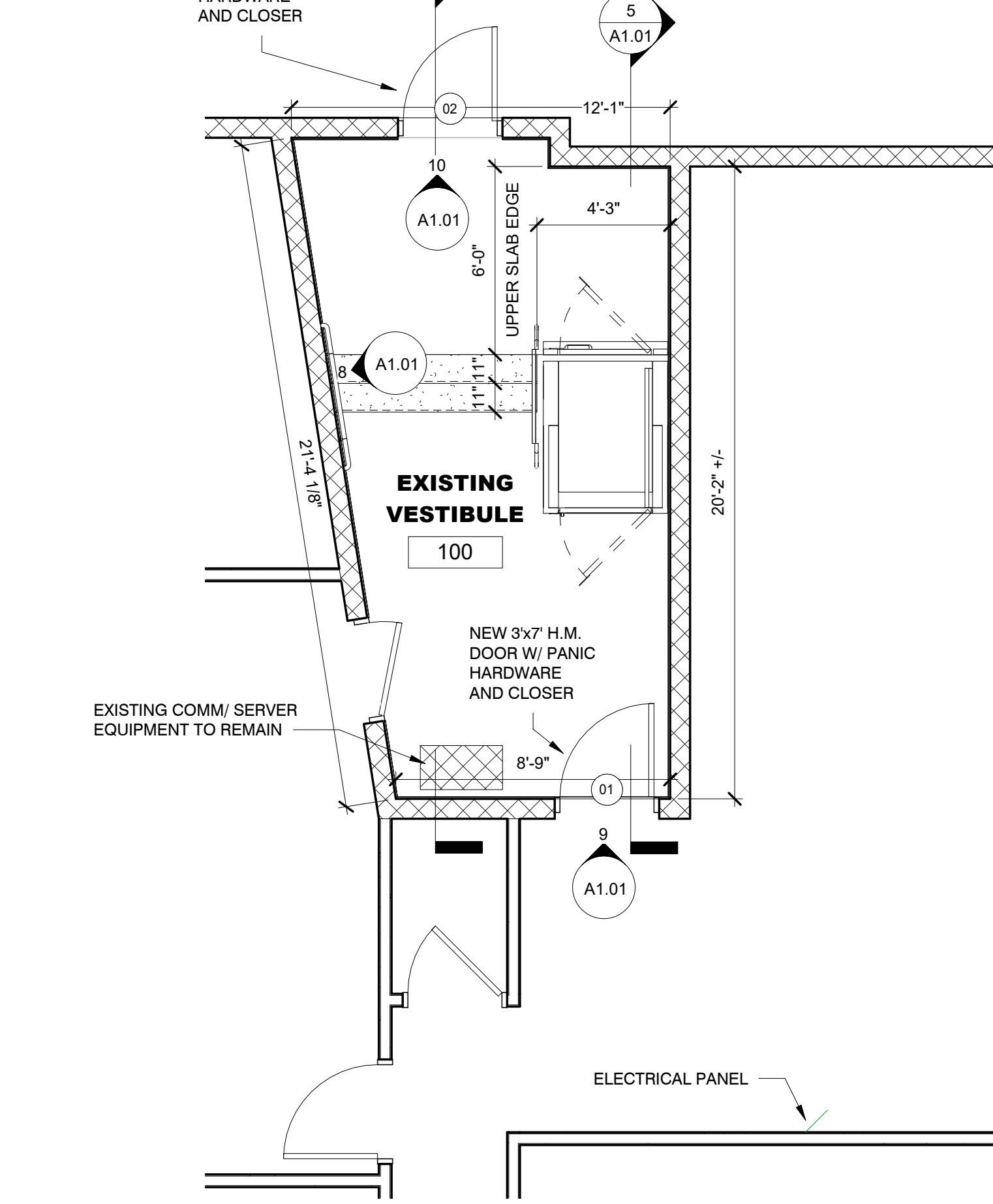
5 LIFT SECTION
 A1.01 3/4" = 1'-0"



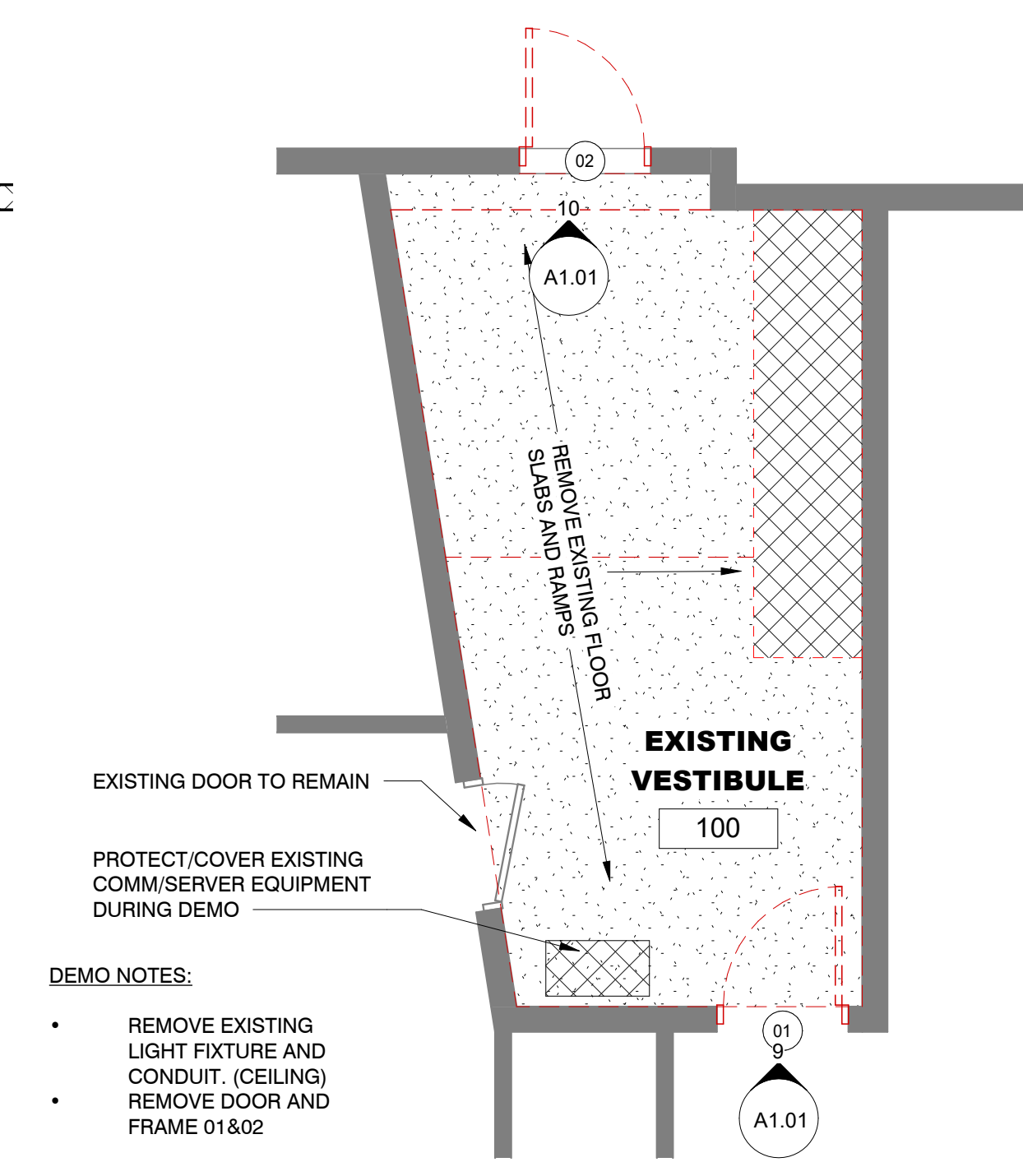
4 FLOOR FINISH PLAN
 A1.01 1/4" = 1'-0"



3 CEILING PLAN
 A1.01 1/4" = 1'-0"



2 FLOOR PLAN
 A1.01 1/4" = 1'-0"



1 DEMO PLAN
 A1.01 1/4" = 1'-0"

- FINISH NOTES:**
- PATCH AND PAINT INTERIOR WALLS INCLUDING RETAINING WALL AND RISERS
 - VINYL WALL BASE
 - CARPET TILE ON NEW SLABS AND STAIRS
 - RUBBER BULLNOSE STAIR EDGES AND RETURNS

- DEMO NOTES:**
- REMOVE EXISTING LIGHT FIXTURE AND CONDUIT. (CEILING)
 - REMOVE DOOR AND FRAME 01&02

DATE: _____ BY: _____

REVISIONS:

REV	DATE	BY

Issue Date: _____

DATE: _____ DRAWN BY: _____

CHECKED BY: _____

APPROVED BY: _____

F.E. NO.: _____ PG.: _____

ADA IMPROVEMENTS
 GENEVA SENIOR CENTER
 62 WEST MAIN STREET, GENEVA, OHIO 44041
RENOVATION PLANS

