

# CITY OF FOREST PARK

## HAMILTON COUNTY, OHIO

# 2024 STREET PROGRAM

### 240070

### APRIL, 2024

**CITY OFFICIALS**

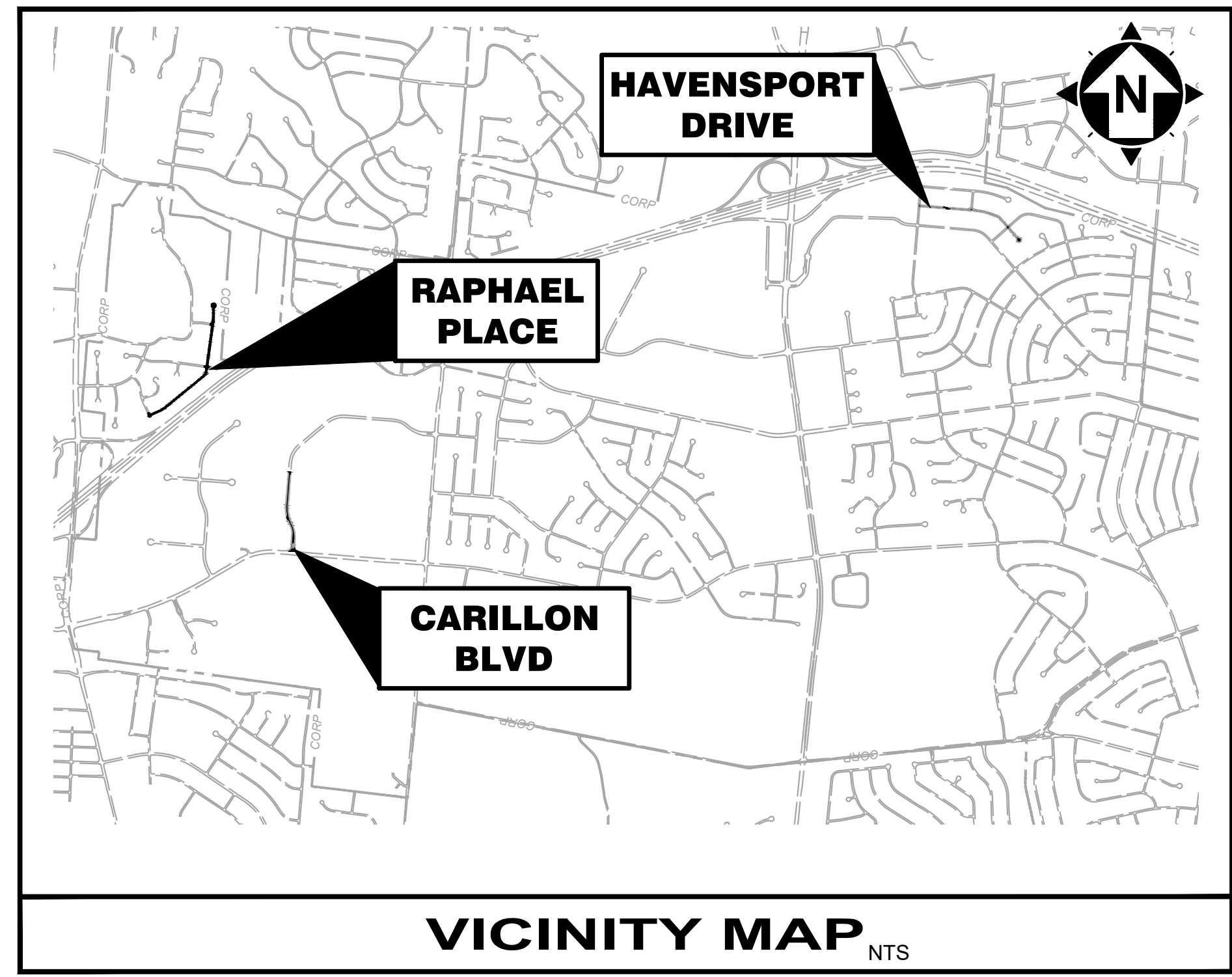
**MAYOR**  
AHARON BROWN

**1ST VICE-MAYOR**  
DENISE HOLT

**2ND VICE-MAYOR**  
ROSALIND MOORE

**CLERK OF COUNCIL**  
TEKIQUA BAILEY

**CITY COUNCIL**  
TRAVINA ADAMS  
CHELSEA CLARK  
TERENCE HARRISON  
REGINALD SYLVESTER



Sheet List Table		
NO.	DESC.	SHEET NAME
1	TITLE	Title Sheet
2	VICIN	Vicinity Map
3	P1	Havensport 1-10
4	P2	Havensport 10-19
5	P3	Raphael 20-29
6	P4	Raphael 29-38
7	P5	Raphael 38-43
8	P6	Carillon 50-54.5
9	P7	Carillon 54.5-63.5
10	DET	Details

**ODOT STANDARD DRAWINGS**  
THE CURRENT EDITION OF THE ODOT STANDARD DRAWINGS ARE HEREBY MADE PART OF THESE PLANS.

**PROJECT SPECIFICATIONS**  
IN GENERAL, THE PROJECT SPECIFICATIONS CONFORM TO THE JANUARY 1, 2019 STANDARD SPECIFICATIONS OF THE STATE OF OHIO, DEPARTMENT OF TRANSPORTATION, INCLUDING CHANGES AND SUPPLEMENTAL SPECIFICATIONS THERETO.  
THE PROJECT SPECIFICATIONS, UNDER SEPERATE COVER, PREPARED BY CT CONSULTANTS SHALL GOVERN ALL WORK AND MATERIALS FOR THIS PROJECT.

UNDERGROUND UTILITIES

Contact Two Working Days  
Before You Dig



**OHIO811.org**  
Before You Dig

OHIO811, 8-1-1, or 1-800-362-2764  
(Non-members must be called directly)

**APPROVED FOR CONSTRUCTION BY:**

SCOTT FALKOWSKI, DIRECTOR OF PUBLIC WORKS

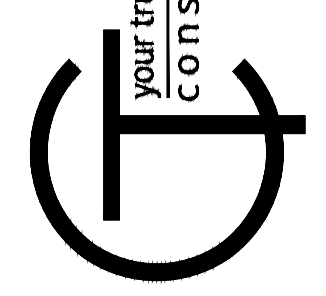
DATE



ERIC MORRIS, P.E. #E-67084

DATE

FOR BID



your trusted advisor  
consultants  
engineers  
architects  
planners

DATE	REVISION	NO	BID	ISSUED FOR:	ISSUE DATE:	SCALE:	DESIGNED BY:	DRAWN BY:	CHECKED BY:
			4/15/2024	AS SHOWN			BHAU	BHAU	EMOR

2024 STREET PROGRAM

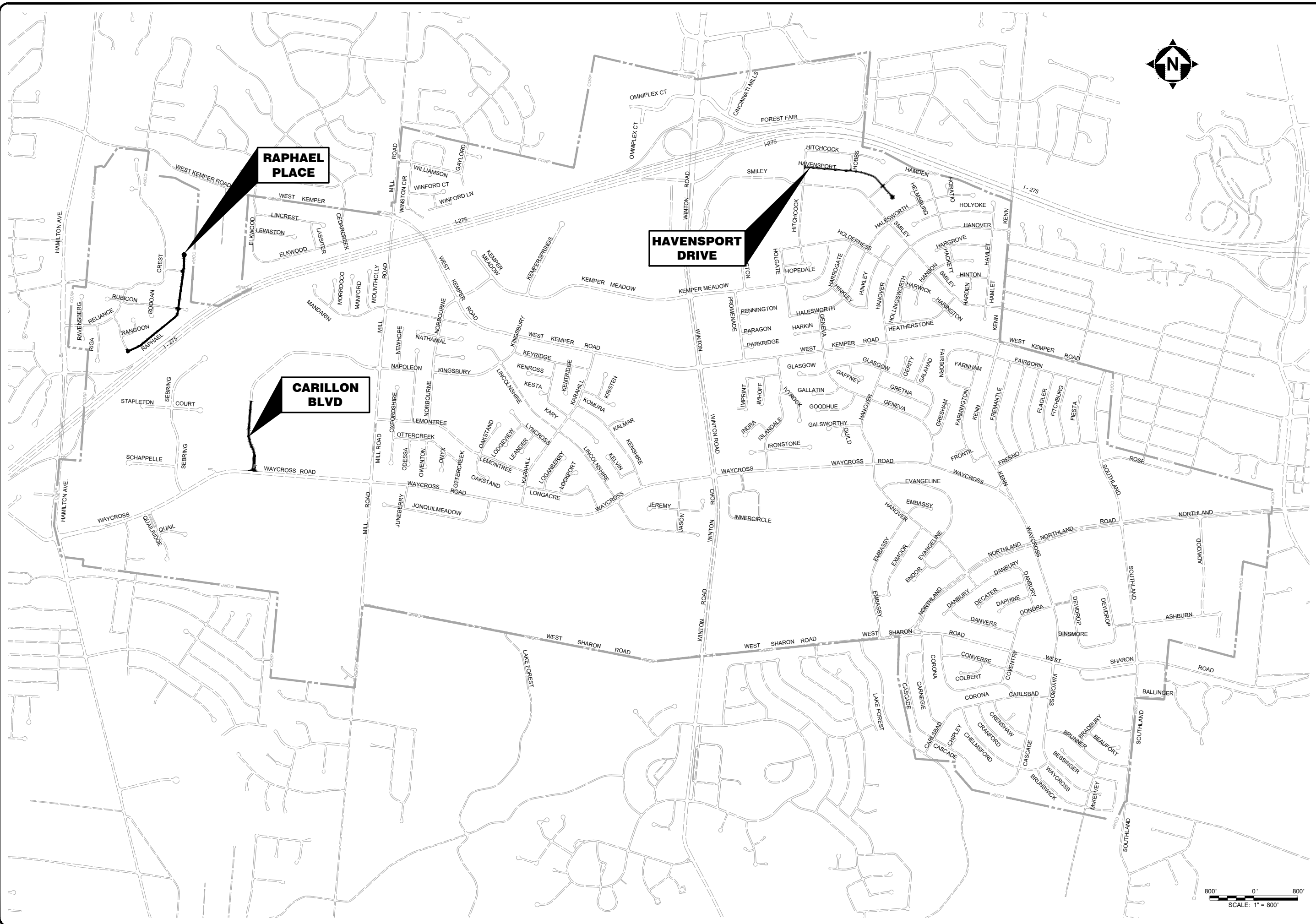
CITY OF FOREST PARK

- HAMILTON COUNTY, OHIO -

TITLE SHEET

PROJECT NO.		<b>240070</b>
DISCIPLINE		<b>CIVIL</b>
SHEET NAME		<b>TITLE</b>
SHEET	OF	
1	10	

H:\2024\40070\DWG\HEETS\240070 - VICINITY MAP DWG - 1 TITLE SHEET - 4/17/2024 12:08:10 PM - RYAN ZENTKOVICH



**FOR BID**



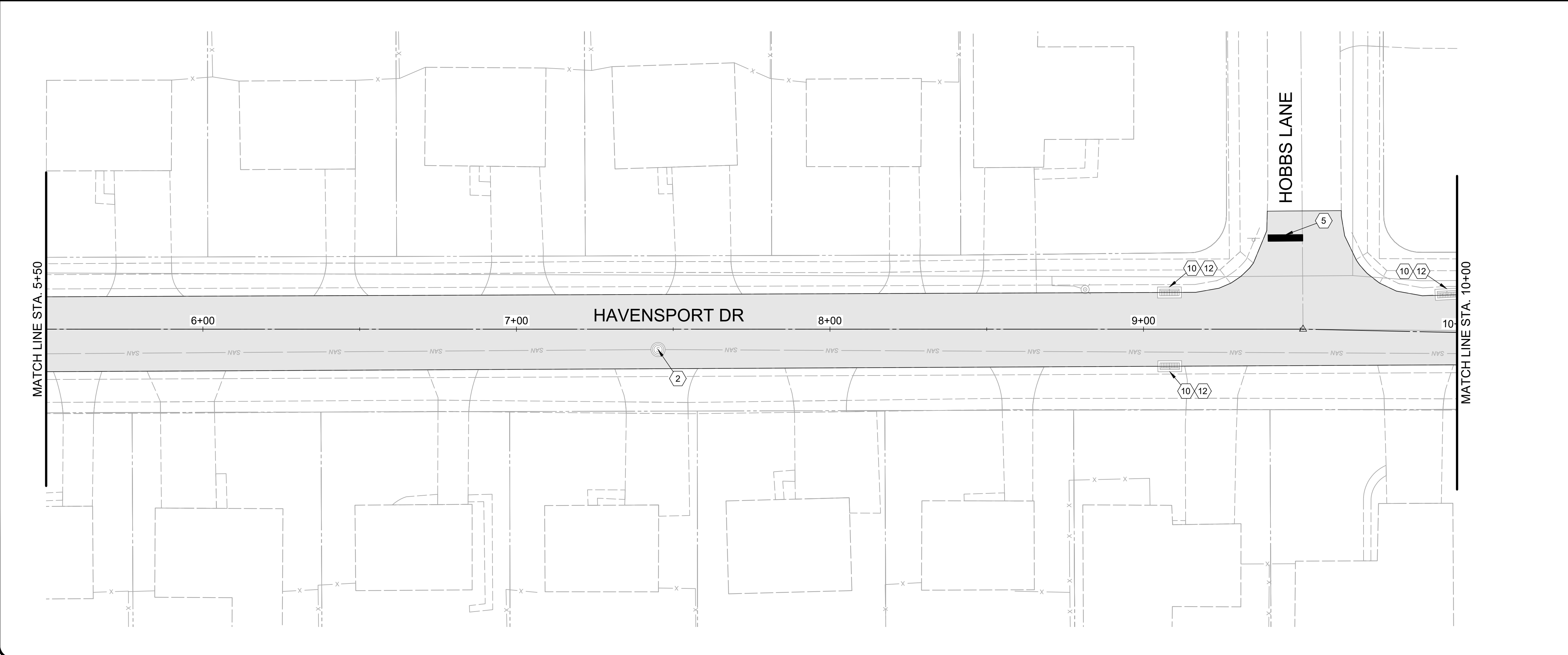
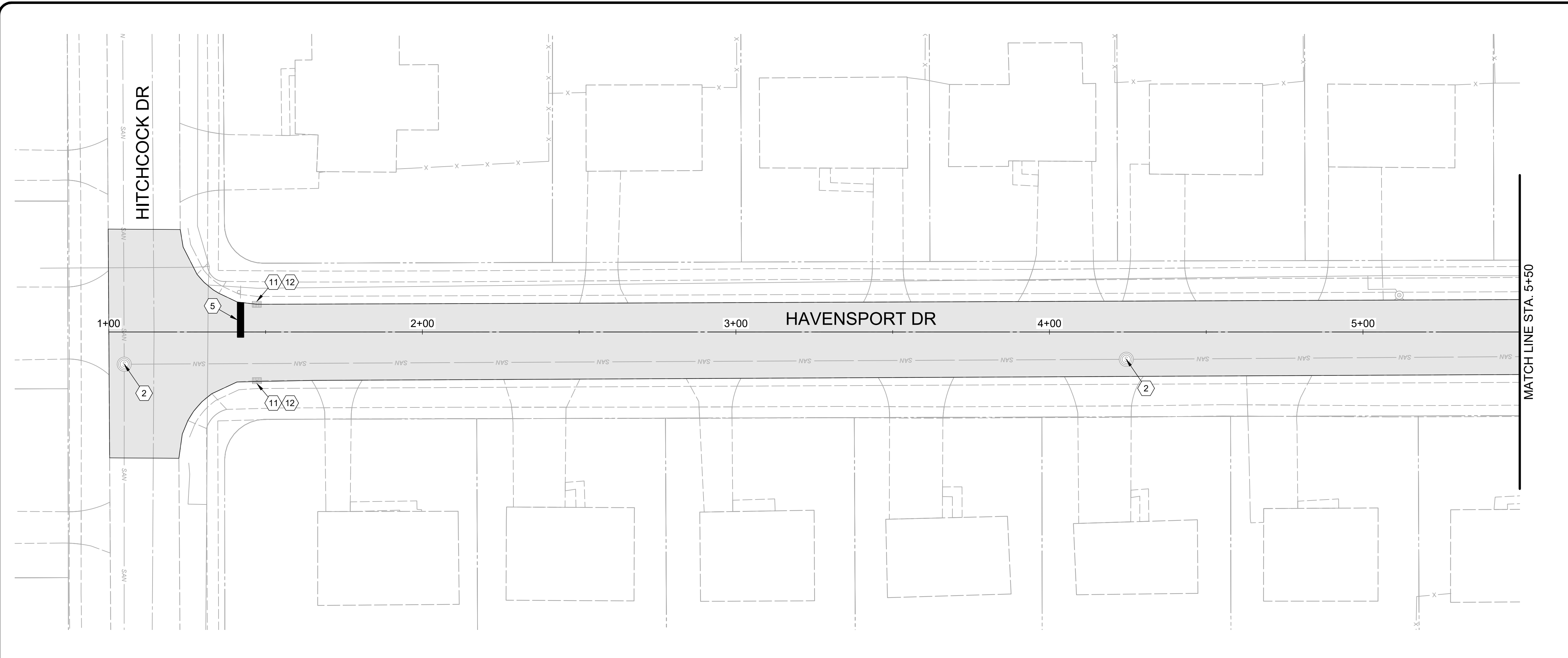
ISSUED FOR:	BID NO	REVISION	DATE
ISSUE DATE: 4/15/2024			
SCALE: AS SHOWN			
DESIGNED BY: BHAU			
DRAWN BY: BHAU			
CHECKED BY: EMOR			

**2024 STREET PROGRAM**  
**CITY OF FOREST PARK**  
**- HAMILTON COUNTY, OHIO -**

**VICINITY MAP**

PROJECT NO.	<b>240070</b>
DISCIPLINE	<b>CIVIL</b>
SHEET NAME	<b>VICIN</b>
SHEET	<b>2</b>
OF	<b>10</b>

H:\2024\240070\DWG\STREET\_240070\_VICINITY MAP.DWG - VICINITY MAP - 4/15/2024 12:08:10 PM - RYAN ZENKOVICH

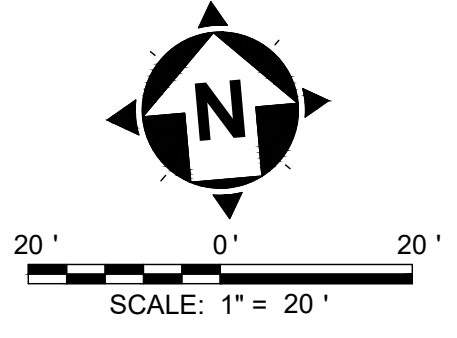


HATCH LEGEND	
	PAVEMENT PLANING AND OVERLAY
	ITEM 608 - ADA CURB RAMP

- NOTES**
- THE FINAL FULL DEPTH REPAIR AREAS WILL BE MARKED WHEN THE PLANING OPERATIONS HAVE BEEN COMPLETED.
  - ADJUSTMENTS TO VALVE BOXES, METERS OR OTHER ASSOCIATED GAS, ELECTRIC, TELEPHONE, WATER, OR CABLE FACILITIES, IF NECESSARY, SHALL BE CONSIDERED INCIDENTAL TO THE CONTRACT AND SHALL BE COMPLETED PER UTILITY OWNER REQUIREMENTS.
  - ALL PAVEMENT MARKINGS ON CARILLON BLVD SHOULD BE MADE TO MATCH EXISTING MARKINGS.
  - RESTORE ALL DOWNSPOUT LINES IN CURB. A CONTINGENCY QUANTITY FOR ITEM 611 - DOWN SPOUT CONDUIT, MISC.: PVC SCHEDULE 40 PIPE, 3" HAS BEEN PROVIDED IN THE COST ESTIMATE.
  - FINAL LOCATIONS IF CURB AND GUTTER REMOVE AND REPLACE TO BE MARKED IN FIELD BY ENGINEER.

- CONSTRUCTION NOTES**
- ITEM 611 - STORM MANHOLE ADJUSTED TO GRADE
  - ITEM SPECIAL - SANITARY MANHOLE ADJUSTED TO GRADE
  - ITEM 644 - CHANNELIZING LINE, 8" SOLID WHITE
  - ITEM 644 - CENTERLINE, 4" SOLID DOUBLE YELLOW
  - ITEM 644 - STOP LINE, 24"
  - ITEM 644 - LANE ARROW, 96"
  - ITEM 644 - WORD ON PAVEMENT, 96"
  - ITEM 644 - DIAGONAL CROSSHATCH MARKINGS, 24" YELLOW
  - ITEM 809 - STOP LINE RADAR DETECTION
  - ITEM 611 - FURNISH NEW CURB PLATE, D.G.I., AS PER PLAN
  - ITEM 611 - FURNISH NEW CURB PLATE, S.G.I., AS PER PLAN
  - ITEM 611 - FURNISH NEW CATCH BASIN FRAME AND TYPE "L" GRATE(S), AS PER PLAN

STREET	CB-3 REBUILD	CB-3A REBUILD	CURB PLATE D.G.I.	CURB PLATE S.G.I.	FRAME & GRATE
HAVENSPORT DR.	0	0	6	4	16



FOR BID

your trusted advisor  
**consultants**

engineers  
architects  
planners

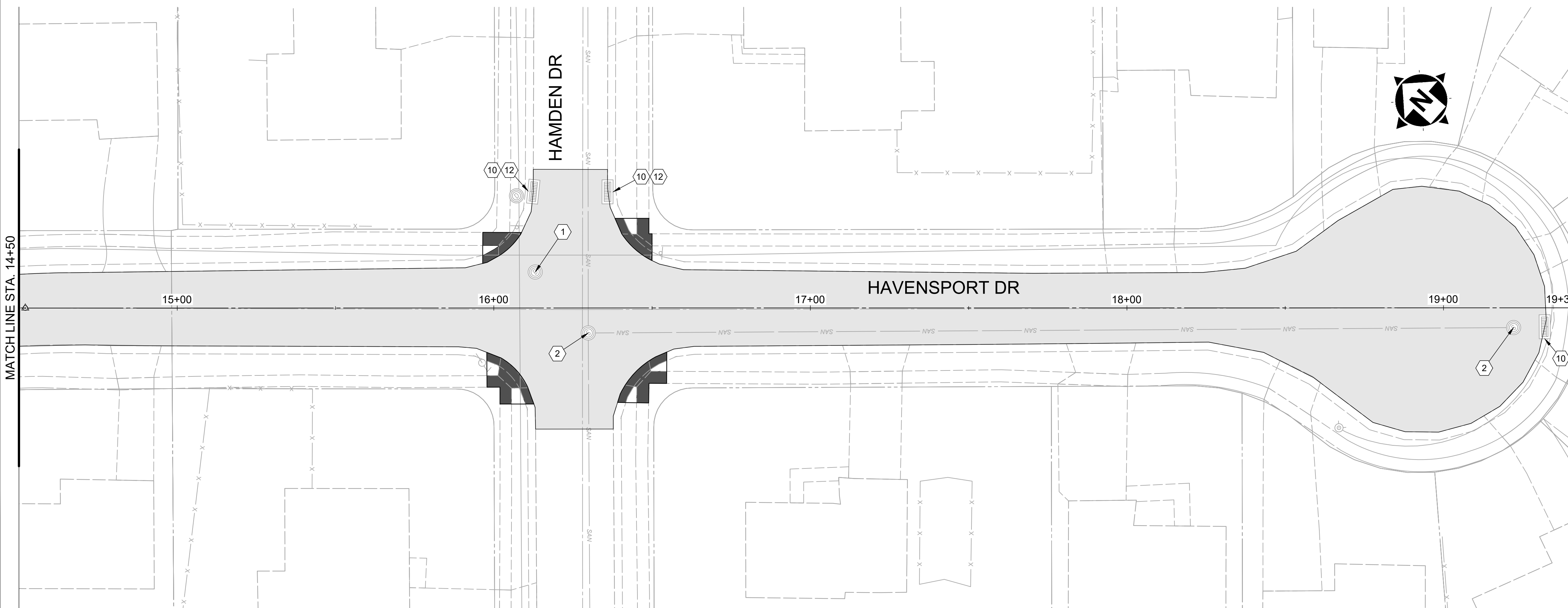
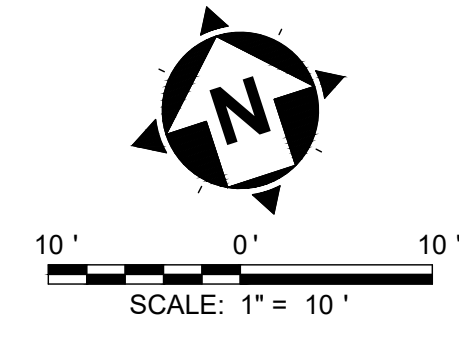
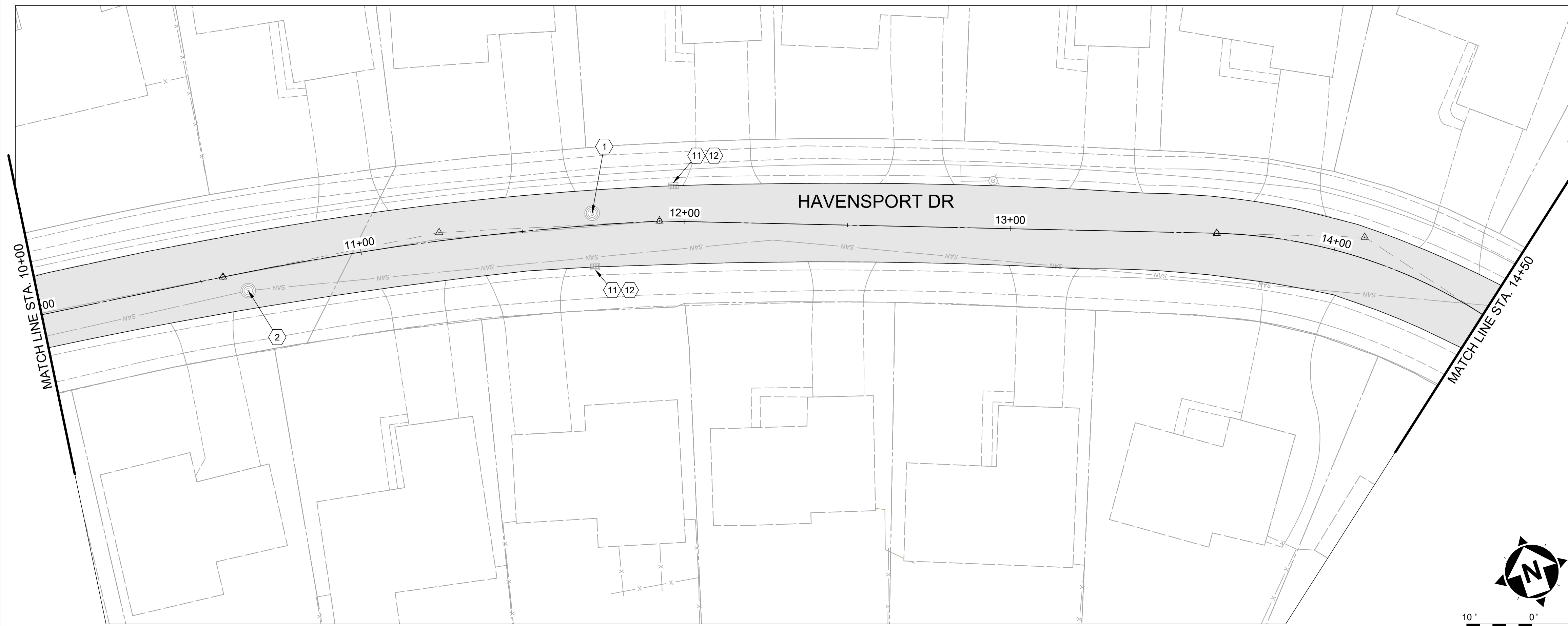
ISSUED FOR:	BID	ISSUE DATE:	SCALE:	DESIGNED BY:	DRAWN BY:	CHECKED BY:
		4/15/2024	AS SHOWN	BHAU	BHAU	EMOR

NO	REVISION	DATE

**2024 STREET PROGRAM**  
CITY OF FOREST PARK  
- HAMILTON COUNTY, OHIO -

**HAVENSPORT 1-10**

PROJECT NO.	<b>240070</b>
DISCIPLINE	<b>CIVIL</b>
SHEET NAME	<b>P1</b>
SHEET	<b>3</b>
OF	<b>10</b>



HATCH LEGEND	
	PAVEMENT PLANING AND OVERLAY
	ITEM 608 - ADA CURB RAMP

- NOTES**
1. THE FINAL FULL DEPTH REPAIR AREAS WILL BE MARKED WHEN THE PLANING OPERATIONS HAVE BEEN COMPLETED.
  2. ADJUSTMENTS TO VALVE BOXES, METERS OR OTHER ASSOCIATED GAS, ELECTRIC, TELEPHONE, WATER, OR CABLE FACILITIES, IF NECESSARY, SHALL BE CONSIDERED INCIDENTAL TO THE CONTRACT AND SHALL BE COMPLETED PER UTILITY OWNER REQUIREMENTS.
  3. ALL PAVEMENT MARKINGS ON CARILLON BLVD SHOULD BE MADE TO MATCH EXISTING MARKINGS.
  4. RESTORE ALL DOWNSPOUT LINES IN CURB. A CONTINGENCY QUANTITY FOR ITEM 611 - DOWN SPOUT CONDUIT, MISC.: PVC SCHEDULE 40 PIPE, 3" HAS BEEN PROVIDED IN THE COST ESTIMATE.
  5. FINAL LOCATIONS IF CURB AND GUTTER REMOVE AND REPLACE TO BE MARKED IN FIELD BY ENGINEER

- CONSTRUCTION NOTES**
- 1 ITEM 611 - STORM MANHOLE ADJUSTED TO GRADE
  - 2 ITEM SPECIAL - SANITARY MANHOLE ADJUSTED TO GRADE
  - 3 ITEM 644 - CHANNELIZING LINE, 8" SOLID WHITE
  - 4 ITEM 644 - CENTERLINE, 4" SOLID DOUBLE YELLOW
  - 5 ITEM 644 - STOP LINE, 24"
  - 6 ITEM 644 - LANE ARROW, 96"
  - 7 ITEM 644 - WORD ON PAVEMENT, 96"
  - 8 ITEM 644 - DIAGONAL CROSSHATCH MARKINGS, 24" YELLOW
  - 9 ITEM 809 - STOP LINE RADAR DETECTION
  - 10 ITEM 611 - FURNISH NEW CURB PLATE, D.G.I., AS PER PLAN
  - 11 ITEM 611 - FURNISH NEW CURB PLATE, S.G.I., AS PER PLAN
  - 12 ITEM 611 - FURNISH NEW CATCH BASIN FRAME AND TYPE "L" GRATE(S), AS PER PLAN

STREET	CB-3 REBUILD	CB-3A REBUILD	CURB PLATE D.G.I.	CURB PLATE S.G.I.	FRAME & GRATE
HAVENSPORT DR.	0	0	6	4	16

**FOR BID**

your trusted advisor  
**consultants**  
 engineers  
 architects  
 planners

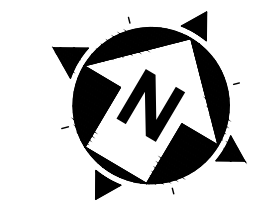
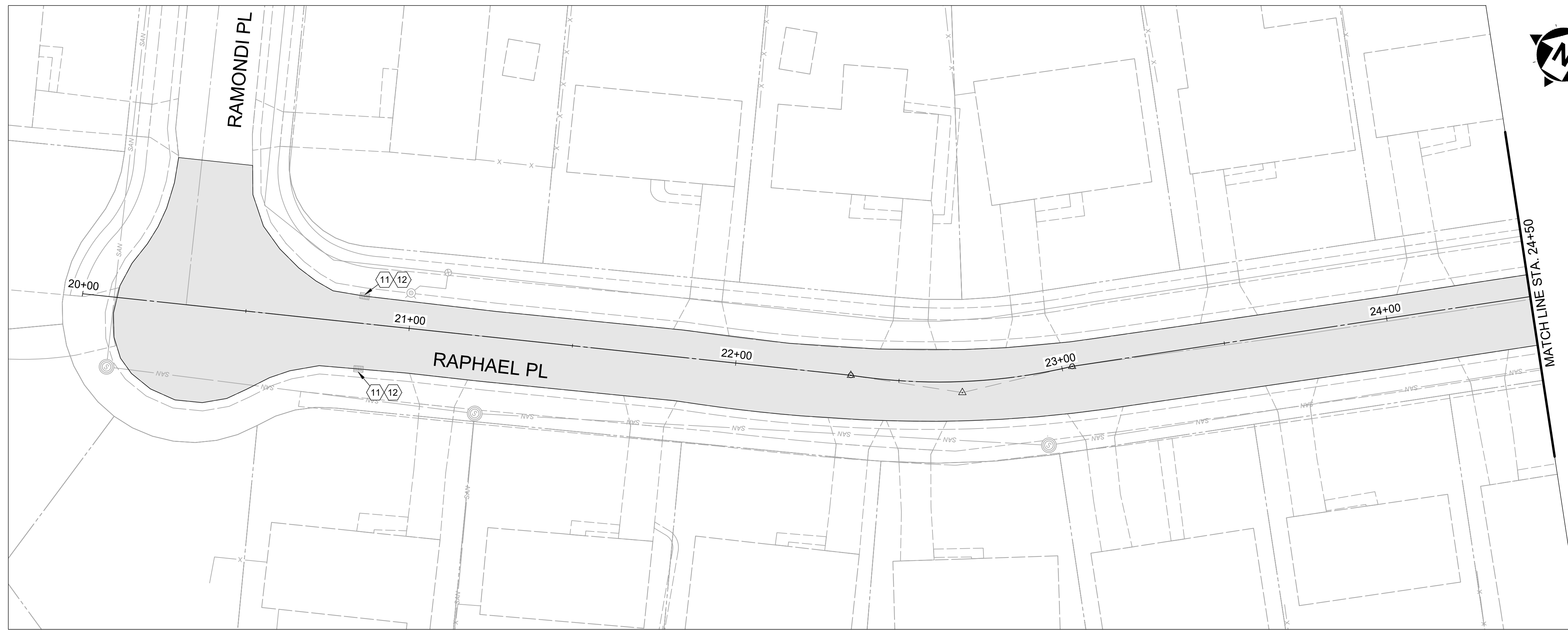
ISSUED FOR:	BID	ISSUE DATE:	SCALE:	DESIGNED BY:	DRAWN BY:	CHECKED BY:
		4/15/2024	AS SHOWN	BHAU	BHAU	EMOR

NO	REVISION	DATE

**2024 STREET PROGRAM**  
 CITY OF FOREST PARK  
 - HAMILTON COUNTY, OHIO -

**HAVENSPORT 10-19**

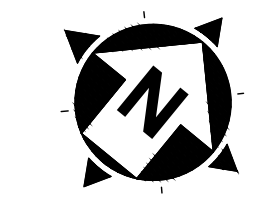
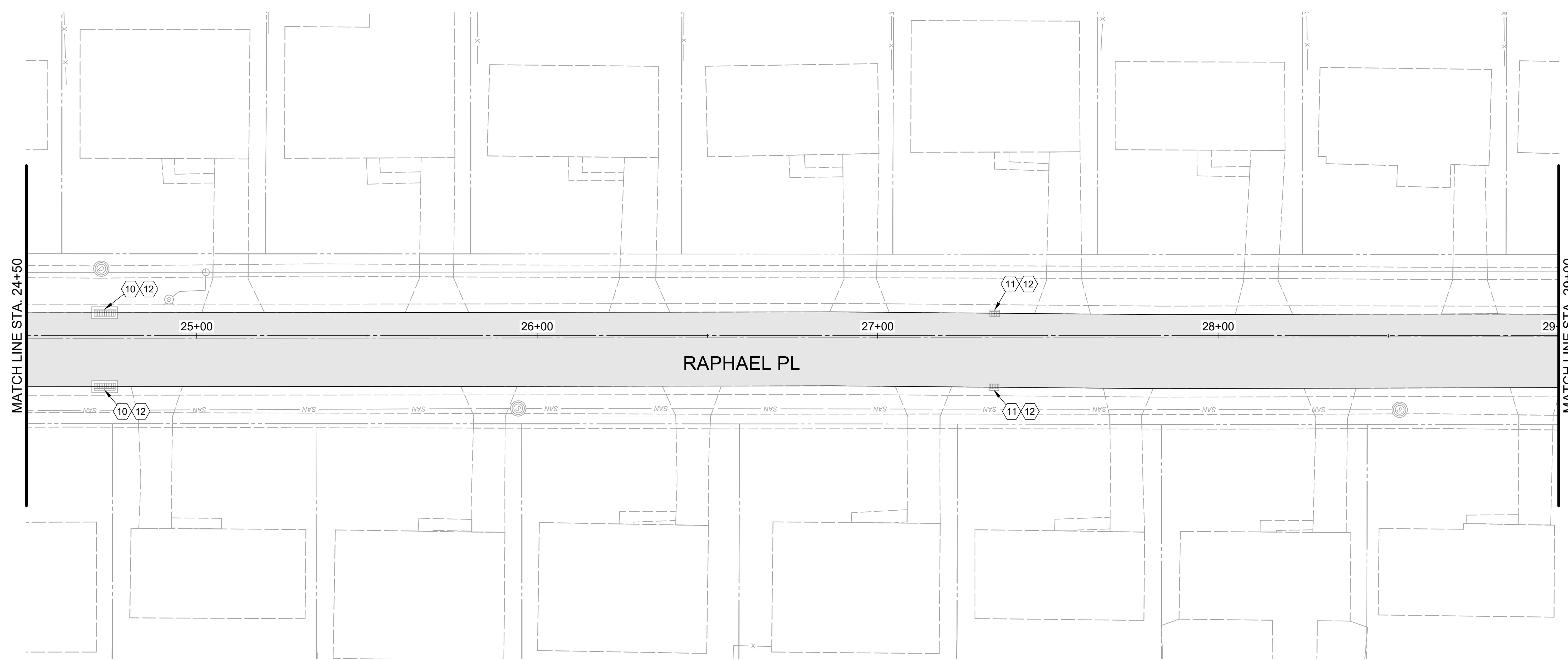
PROJECT NO.	<b>240070</b>
DISCIPLINE	<b>CIVIL</b>
SHEET NAME	<b>P2</b>
SHEET	<b>4</b>
OF	<b>10</b>



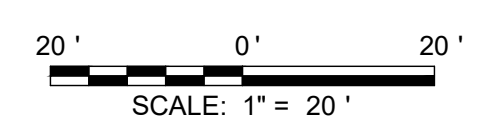
HATCH LEGEND	
	PAVEMENT PLANING AND OVERLAY
	ITEM 608 - ADA CURB RAMP

- NOTES**
1. THE FINAL FULL DEPTH REPAIR AREAS WILL BE MARKED WHEN THE PLANING OPERATIONS HAVE BEEN COMPLETED.
  2. ADJUSTMENTS TO VALVE BOXES, METERS OR OTHER ASSOCIATED GAS, ELECTRIC, TELEPHONE, WATER, OR CABLE FACILITIES, IF NECESSARY, SHALL BE CONSIDERED INCIDENTAL TO THE CONTRACT AND SHALL BE COMPLETED PER UTILITY OWNER REQUIREMENTS.
  3. ALL PAVEMENT MARKINGS ON CARILLON BLVD SHOULD BE MADE TO MATCH EXISTING MARKINGS.
  4. RESTORE ALL DOWNSPOUT LINES IN CURB. A CONTINGENCY QUANTITY FOR ITEM 611 - DOWN SPOUT CONDUIT, MISC.: PVC SCHEDULE 40 PIPE, 3" HAS BEEN PROVIDED IN THE COST ESTIMATE.
  5. FINAL LOCATIONS IF CURB AND GUTTER REMOVE AND REPLACE TO BE MARKED IN FIELD BY ENGINEER

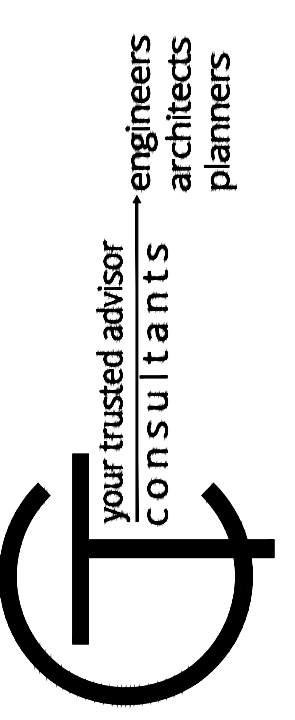
- CONSTRUCTION NOTES**
- 1 ITEM 611 - STORM MANHOLE ADJUSTED TO GRADE
  - 2 ITEM SPECIAL - SANITARY MANHOLE ADJUSTED TO GRADE
  - 3 ITEM 644 - CHANNELIZING LINE, 8" SOLID WHITE
  - 4 ITEM 644 - CENTERLINE, 4" SOLID DOUBLE YELLOW
  - 5 ITEM 644 - STOP LINE, 24"
  - 6 ITEM 644 - LANE ARROW, 96"
  - 7 ITEM 644 - WORD ON PAVEMENT, 96"
  - 8 ITEM 644 - DIAGONAL CROSSHATCH MARKINGS, 24" YELLOW
  - 9 ITEM 809 - STOP LINE RADAR DETECTION
  - 10 ITEM 611 - FURNISH NEW CURB PLATE, D.G.I., AS PER PLAN
  - 11 ITEM 611 - FURNISH NEW CURB PLATE, S.G.I., AS PER PLAN
  - 12 ITEM 611 - FURNISH NEW CATCH BASIN FRAME AND TYPE "L" GRATE(S), AS PER PLAN



STREET	CB-3 REBUILD	CB-3A REBUILD	CURB PLATE D.G.I.	CURB PLATE S.G.I.	FRAME & GRATE
RAPHAEL PL	0	0	6	7	19



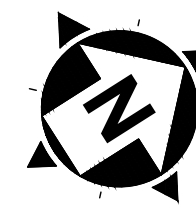
**FOR BID**



ISSUED FOR:	BID	ISSUE DATE:	SCALE:	DESIGNED BY:	DRAWN BY:	CHECKED BY:
		4/15/2024	AS SHOWN	BHAU	BHAU	EMOR

**2024 STREET PROGRAM**  
**CITY OF FOREST PARK**  
 - HAMILTON COUNTY, OHIO -  
**RAPHAEL 20-29**

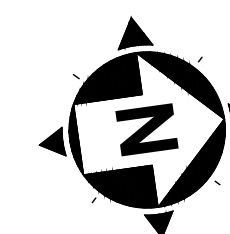
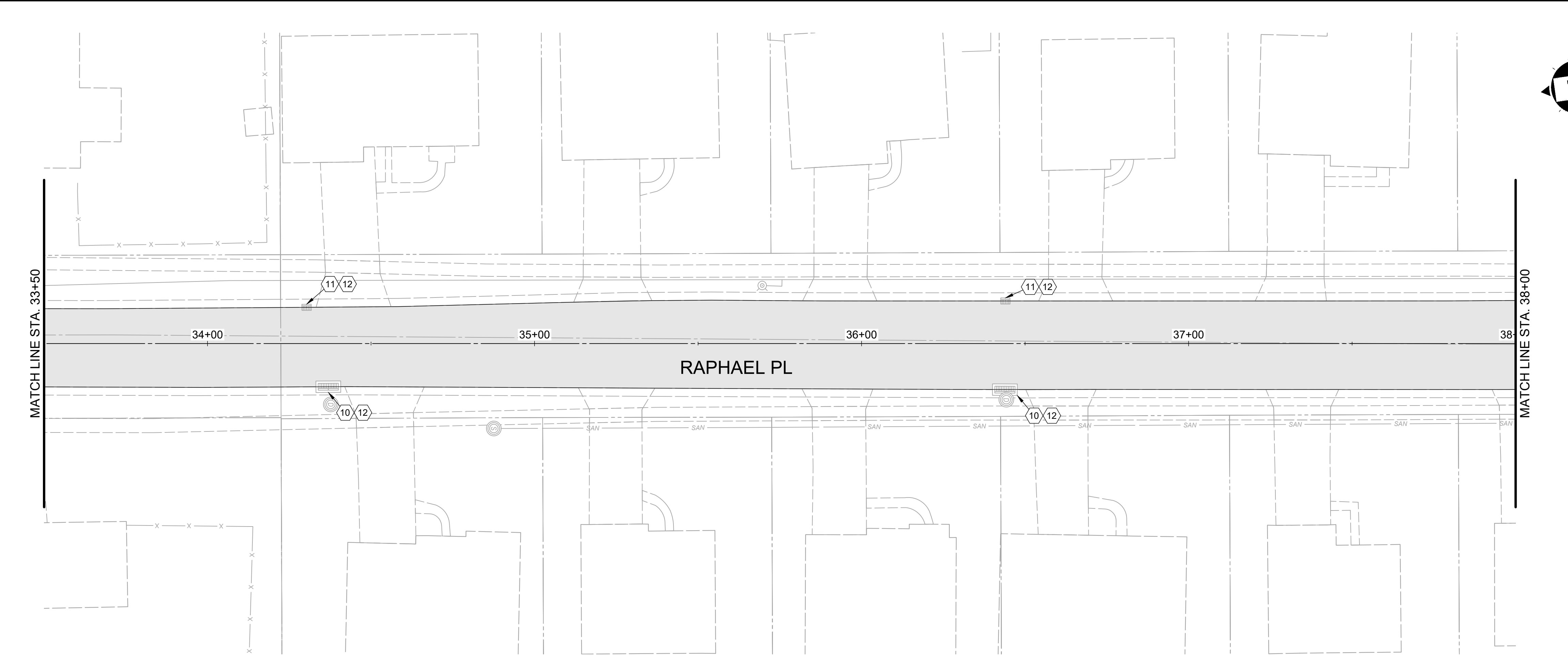
PROJECT NO.	<b>240070</b>
DISCIPLINE	<b>CIVIL</b>
SHEET NAME	<b>P3</b>
SHEET	<b>5</b>
OF	<b>10</b>



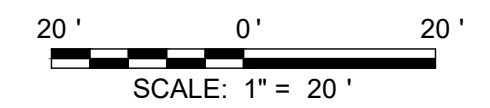
HATCH LEGEND	
	PAVEMENT PLANING AND OVERLAY
	ITEM 608 - ADA CURB RAMP

- NOTES**
- THE FINAL FULL DEPTH REPAIR AREAS WILL BE MARKED WHEN THE PLANING OPERATIONS HAVE BEEN COMPLETED.
  - ADJUSTMENTS TO VALVE BOXES, METERS OR OTHER ASSOCIATED GAS, ELECTRIC, TELEPHONE, WATER, OR CABLE FACILITIES, IF NECESSARY, SHALL BE CONSIDERED INCIDENTAL TO THE CONTRACT AND SHALL BE COMPLETED PER UTILITY OWNER REQUIREMENTS.
  - ALL PAVEMENT MARKINGS ON CARILLON BLVD SHOULD BE MADE TO MATCH EXISTING MARKINGS.
  - RESTORE ALL DOWNSPOUT LINES IN CURB. A CONTINGENCY QUANTITY FOR ITEM 611 - DOWN SPOUT CONDUIT, MISC.: PVC SCHEDULE 40 PIPE, 3" HAS BEEN PROVIDED IN THE COST ESTIMATE.
  - FINAL LOCATIONS IF CURB AND GUTTER REMOVE AND REPLACE TO BE MARKED IN FIELD BY ENGINEER

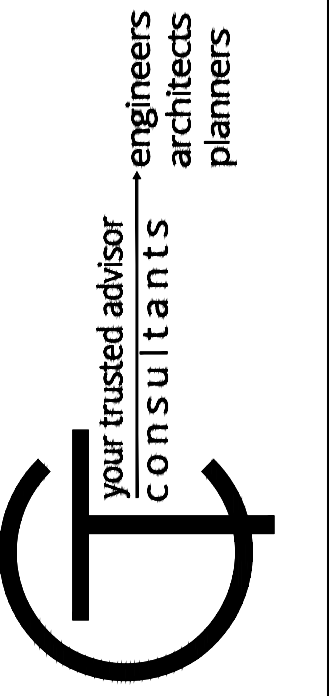
- CONSTRUCTION NOTES**
- ITEM 611 - STORM MANHOLE ADJUSTED TO GRADE
  - ITEM SPECIAL - SANITARY MANHOLE ADJUSTED TO GRADE
  - ITEM 644 - CHANNELIZING LINE, 8" SOLID WHITE
  - ITEM 644 - CENTERLINE, 4" SOLID DOUBLE YELLOW
  - ITEM 644 - STOP LINE, 24"
  - ITEM 644 - LANE ARROW, 96"
  - ITEM 644 - WORD ON PAVEMENT, 96"
  - ITEM 644 - DIAGONAL CROSSHATCH MARKINGS, 24" YELLOW
  - ITEM 809 - STOP LINE RADAR DETECTION
  - ITEM 611 - FURNISH NEW CURB PLATE, D.G.I., AS PER PLAN
  - ITEM 611 - FURNISH NEW CURB PLATE, S.G.I., AS PER PLAN
  - ITEM 611 - FURNISH NEW CATCH BASIN FRAME AND TYPE "L" GRATE(S), AS PER PLAN



STREET	CB-3 REBUILD	CB-3A REBUILD	CURB PLATE D.G.I.	CURB PLATE S.G.I.	FRAME & GRATE
RAPHAEL PL	0	0	6	7	19



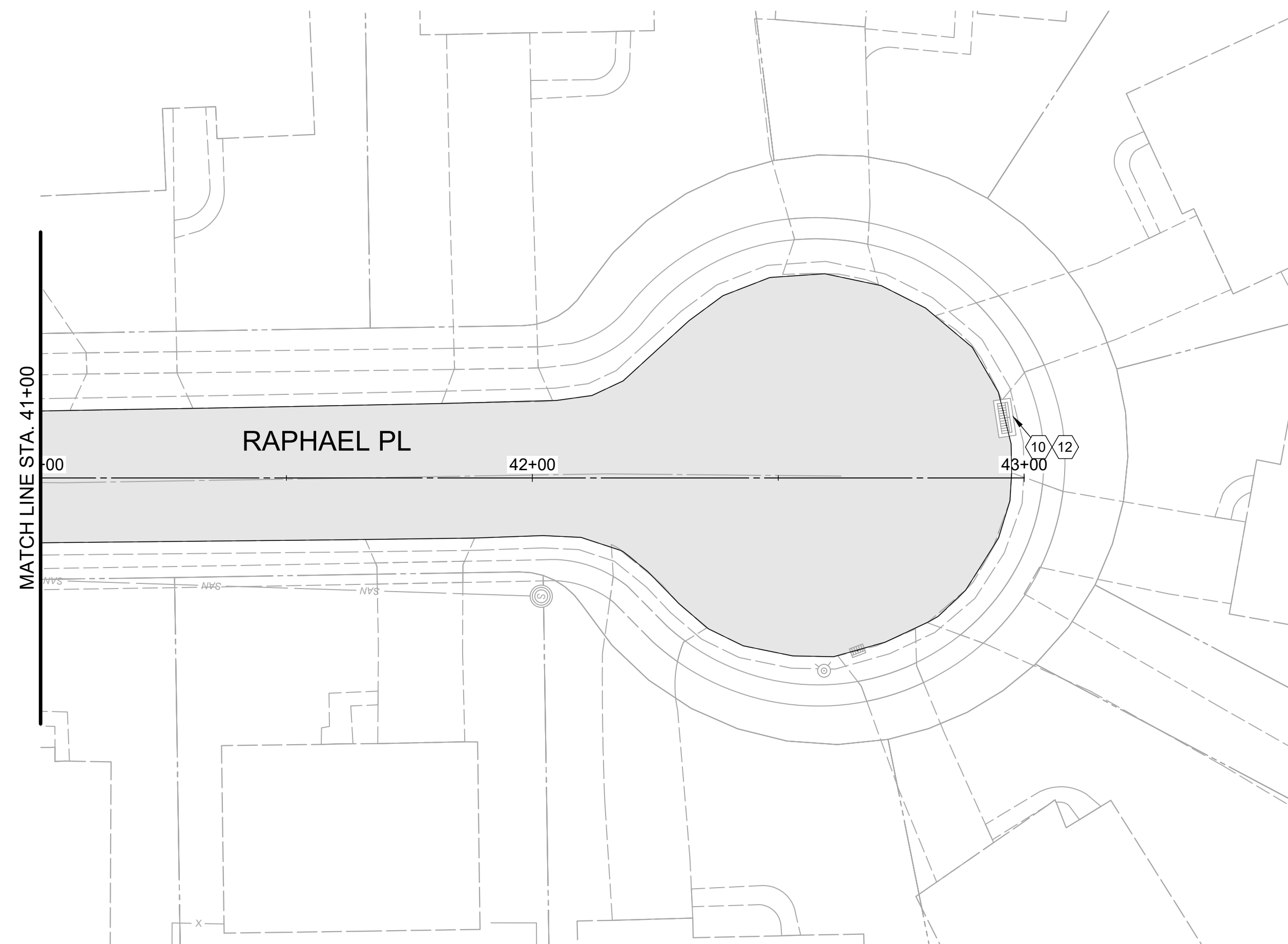
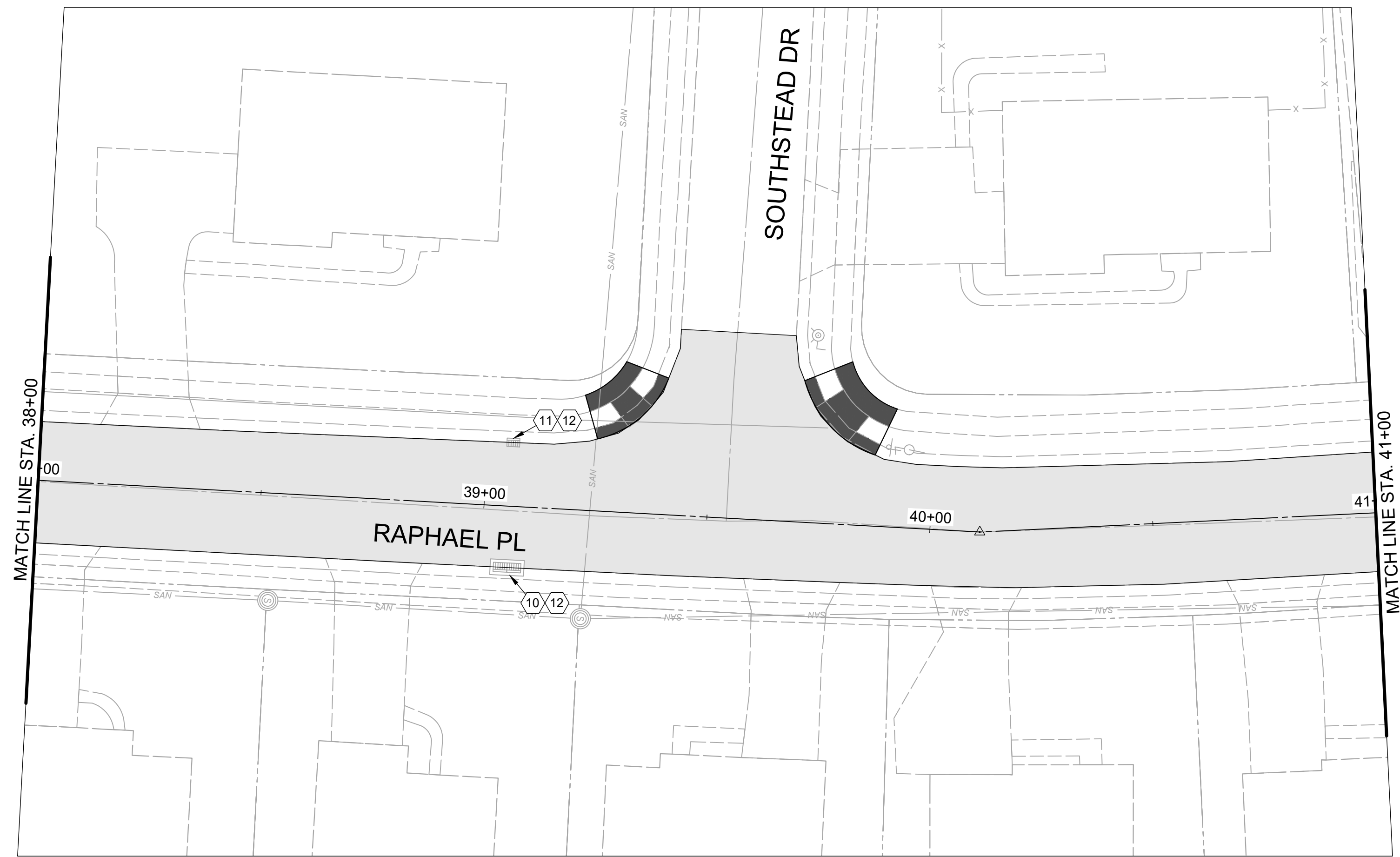
**FOR BID**



ISSUED FOR:	BID NO.	ISSUE DATE:	SCALE:	DESIGNED BY:	DRAWN BY:	CHECKED BY:
		4/15/2024	AS SHOWN	BHAU	BHAU	EMOR

**2024 STREET PROGRAM**  
 CITY OF FOREST PARK  
 - HAMILTON COUNTY, OHIO -  
**RAPHAEL 29-38**

PROJECT NO.	<b>240070</b>
DISCIPLINE	<b>CIVIL</b>
SHEET NAME	<b>P4</b>
SHEET	<b>6</b>
OF	<b>10</b>

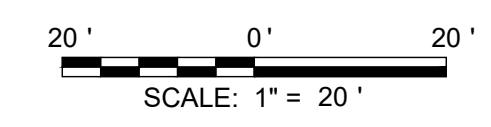


HATCH LEGEND	
	PAVEMENT PLANING AND OVERLAY
	ITEM 608 - ADA CURB RAMP

- NOTES**
1. THE FINAL FULL DEPTH REPAIR AREAS WILL BE MARKED WHEN THE PLANING OPERATIONS HAVE BEEN COMPLETED.
  2. ADJUSTMENTS TO VALVE BOXES, METERS OR OTHER ASSOCIATED GAS, ELECTRIC, TELEPHONE, WATER, OR CABLE FACILITIES, IF NECESSARY, SHALL BE CONSIDERED INCIDENTAL TO THE CONTRACT AND SHALL BE COMPLETED PER UTILITY OWNER REQUIREMENTS.
  3. ALL PAVEMENT MARKINGS ON CARILLON BLVD SHOULD BE MADE TO MATCH EXISTING MARKINGS.
  4. RESTORE ALL DOWNSPOUT LINES IN CURB. A CONTINGENCY QUANTITY FOR ITEM 611 - DOWN SPOUT CONDUIT, MISC.: PVC SCHEDULE 40 PIPE, 3" HAS BEEN PROVIDED IN THE COST ESTIMATE.
  5. FINAL LOCATIONS IF CURB AND GUTTER REMOVE AND REPLACE TO BE MARKED IN FIELD BY ENGINEER

- CONSTRUCTION NOTES**
- ① ITEM 611 - STORM MANHOLE ADJUSTED TO GRADE
  - ② ITEM SPECIAL - SANITARY MANHOLE ADJUSTED TO GRADE
  - ③ ITEM 644 - CHANNELIZING LINE, 8" SOLID WHITE
  - ④ ITEM 644 - CENTERLINE, 4" SOLID DOUBLE YELLOW
  - ⑤ ITEM 644 - STOP LINE, 24"
  - ⑥ ITEM 644 - LANE ARROW, 96"
  - ⑦ ITEM 644 - WORD ON PAVEMENT, 96"
  - ⑧ ITEM 644 - DIAGONAL CROSSHATCH MARKINGS, 24" YELLOW
  - ⑨ ITEM 809 - STOP LINE RADAR DETECTION
  - ⑩ ITEM 611 - FURNISH NEW CURB PLATE, D.G.I., AS PER PLAN
  - ⑪ ITEM 611 - FURNISH NEW CURB PLATE, S.G.I., AS PER PLAN
  - ⑫ ITEM 611 - FURNISH NEW CATCH BASIN FRAME AND TYPE "L" GRATE(S), AS PER PLAN

STREET	CB-3 REBUILD	CB-3A REBUILD	CURB PLATE D.G.I.	CURB PLATE S.G.I.	FRAME & GRATE
RAPHAEL PL	0	0	6	7	19



FOR BID

your trusted advisor  
**consultants**

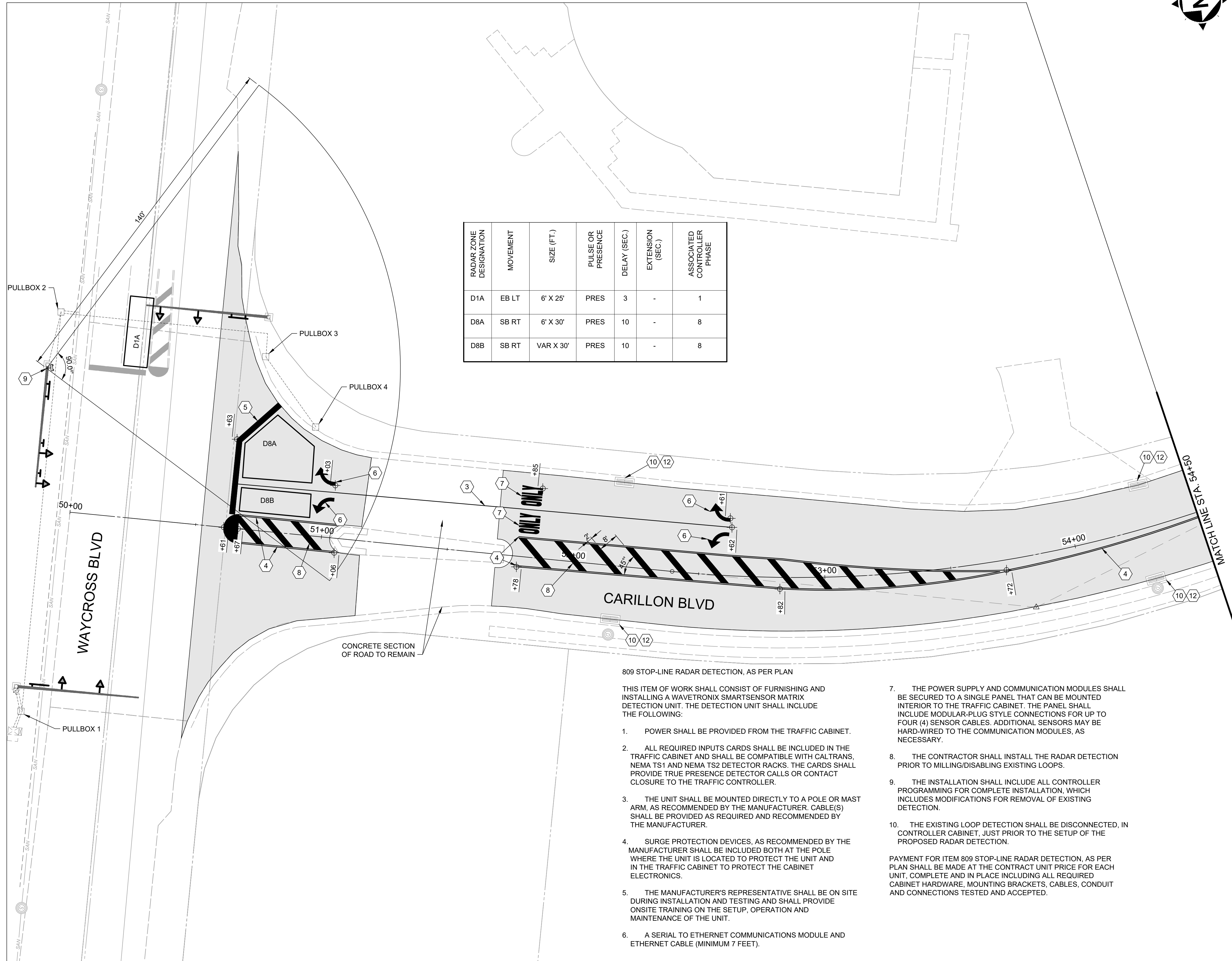
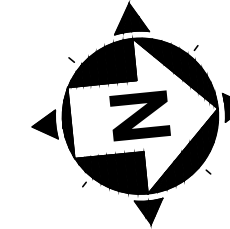
engineers  
architects  
planners

ISSUED FOR:	BID	DATE	NO	REVISION
ISSUE DATE:	4/15/2024			
SCALE:	AS SHOWN			
DESIGNED BY:	BHAU			
DRAWN BY:	BHAU			
CHECKED BY:	EMOR			

**2024 STREET PROGRAM**  
CITY OF FOREST PARK  
- HAMILTON COUNTY, OHIO -

RAPHAEL 38-43

PROJECT NO.	
<b>240070</b>	
DISCIPLINE	
<b>CIVIL</b>	
SHEET NAME	
<b>P5</b>	
SHEET	OF
<b>7</b>	<b>10</b>



RADAR ZONE DESIGNATION	MOVEMENT	SIZE (FT.)	PULSE OR PRESENCE	DELAY (SEC.)	EXTENSION (SEC.)	ASSOCIATED CONTROLLER PHASE
D1A	EB LT	6' X 25'	PRES	3	-	1
D8A	SB RT	6' X 30'	PRES	10	-	8
D8B	SB RT	VAR X 30'	PRES	10	-	8

HATCH LEGEND	
	PAVEMENT PLANING AND OVERLAY
	ITEM 608 - ADA CURB RAMP

- NOTES**
- THE FINAL FULL DEPTH REPAIR AREAS WILL BE MARKED WHEN THE PLANING OPERATIONS HAVE BEEN COMPLETED.
  - ADJUSTMENTS TO VALVE BOXES, METERS OR OTHER ASSOCIATED GAS, ELECTRIC, TELEPHONE, WATER, OR CABLE FACILITIES, IF NECESSARY, SHALL BE CONSIDERED INCIDENTAL TO THE CONTRACT AND SHALL BE COMPLETED PER UTILITY OWNER REQUIREMENTS.
  - ALL PAVEMENT MARKINGS ON CARILLON BLVD SHOULD BE MADE TO MATCH EXISTING MARKINGS.
  - RESTORE ALL DOWNSPOUT LINES IN CURB. A CONTINGENCY QUANTITY FOR ITEM 611 - DOWN SPOUT CONDUIT, MISC.: PVC SCHEDULE 40 PIPE, 3" HAS BEEN PROVIDED IN THE COST ESTIMATE.
  - FINAL LOCATIONS IF CURB AND GUTTER REMOVE AND REPLACE TO BE MARKED IN FIELD BY ENGINEER

- CONSTRUCTION NOTES**
- ITEM 611 - STORM MANHOLE ADJUSTED TO GRADE
  - ITEM SPECIAL - SANITARY MANHOLE ADJUSTED TO GRADE
  - ITEM 644 - CHANNELIZING LINE, 8" SOLID WHITE
  - ITEM 644 - CENTERLINE, 4" SOLID DOUBLE YELLOW
  - ITEM 644 - STOP LINE, 24"
  - ITEM 644 - LANE ARROW, 96"
  - ITEM 644 - WORD ON PAVEMENT, 96"
  - ITEM 644 - DIAGONAL CROSSHATCH MARKINGS, 24" YELLOW
  - ITEM 809 - STOP LINE RADAR DETECTION
  - ITEM 611 - FURNISH NEW CURB PLATE, D.G.I., AS PER PLAN
  - ITEM 611 - FURNISH NEW CURB PLATE, S.G.I., AS PER PLAN
  - ITEM 611 - FURNISH NEW CATCH BASIN FRAME AND TYPE "L" GRATE(S), AS PER PLAN

STREET	CB-3 REBUILD	CB-3A REBUILD	CURB PLATE D.G.I.	CURB PLATE S.G.I.	FRAME & GRATE
CARILLION BLVD	0	0	10	0	20

809 STOP-LINE RADAR DETECTION, AS PER PLAN

THIS ITEM OF WORK SHALL CONSIST OF FURNISHING AND INSTALLING A WAVETRONIX SMARTSENSOR MATRIX DETECTION UNIT. THE DETECTION UNIT SHALL INCLUDE THE FOLLOWING:

- POWER SHALL BE PROVIDED FROM THE TRAFFIC CABINET.
- ALL REQUIRED INPUTS CARDS SHALL BE INCLUDED IN THE TRAFFIC CABINET AND SHALL BE COMPATIBLE WITH CALTRANS, NEMA TS1 AND NEMA TS2 DETECTOR RACKS. THE CARDS SHALL PROVIDE TRUE PRESENCE DETECTOR CALLS OR CONTACT CLOSURE TO THE TRAFFIC CONTROLLER.
- THE UNIT SHALL BE MOUNTED DIRECTLY TO A POLE OR MAST ARM, AS RECOMMENDED BY THE MANUFACTURER. CABLE(S) SHALL BE PROVIDED AS REQUIRED AND RECOMMENDED BY THE MANUFACTURER.
- SURGE PROTECTION DEVICES, AS RECOMMENDED BY THE MANUFACTURER SHALL BE INCLUDED BOTH AT THE POLE WHERE THE UNIT IS LOCATED TO PROTECT THE UNIT AND IN THE TRAFFIC CABINET TO PROTECT THE CABINET ELECTRONICS.
- THE MANUFACTURER'S REPRESENTATIVE SHALL BE ON SITE DURING INSTALLATION AND TESTING AND SHALL PROVIDE ONSITE TRAINING ON THE SETUP, OPERATION AND MAINTENANCE OF THE UNIT.
- A SERIAL TO ETHERNET COMMUNICATIONS MODULE AND ETHERNET CABLE (MINIMUM 7 FEET).

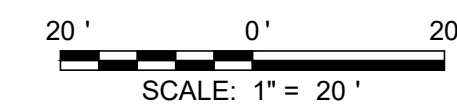
- THE POWER SUPPLY AND COMMUNICATION MODULES SHALL BE SECURED TO A SINGLE PANEL THAT CAN BE MOUNTED INTERIOR TO THE TRAFFIC CABINET. THE PANEL SHALL INCLUDE MODULAR-PLUG STYLE CONNECTIONS FOR UP TO FOUR (4) SENSOR CABLES. ADDITIONAL SENSORS MAY BE HARD-WIRED TO THE COMMUNICATION MODULES, AS NECESSARY.

- THE CONTRACTOR SHALL INSTALL THE RADAR DETECTION PRIOR TO MILLING/DISABLING EXISTING LOOPS.

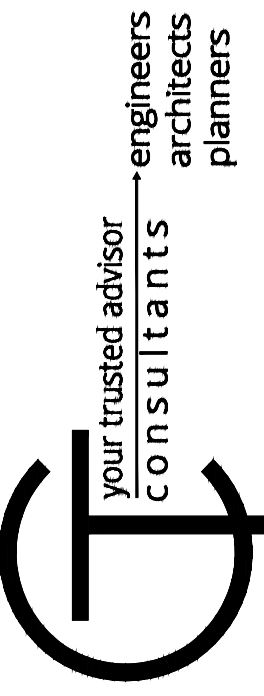
- THE INSTALLATION SHALL INCLUDE ALL CONTROLLER PROGRAMMING FOR COMPLETE INSTALLATION, WHICH INCLUDES MODIFICATIONS FOR REMOVAL OF EXISTING DETECTION.

- THE EXISTING LOOP DETECTION SHALL BE DISCONNECTED, IN CONTROLLER CABINET, JUST PRIOR TO THE SETUP OF THE PROPOSED RADAR DETECTION.

PAYMENT FOR ITEM 809 STOP-LINE RADAR DETECTION, AS PER PLAN SHALL BE MADE AT THE CONTRACT UNIT PRICE FOR EACH UNIT, COMPLETE AND IN PLACE INCLUDING ALL REQUIRED CABINET HARDWARE, MOUNTING BRACKETS, CABLES, CONDUIT AND CONNECTIONS TESTED AND ACCEPTED.



**FOR BID**



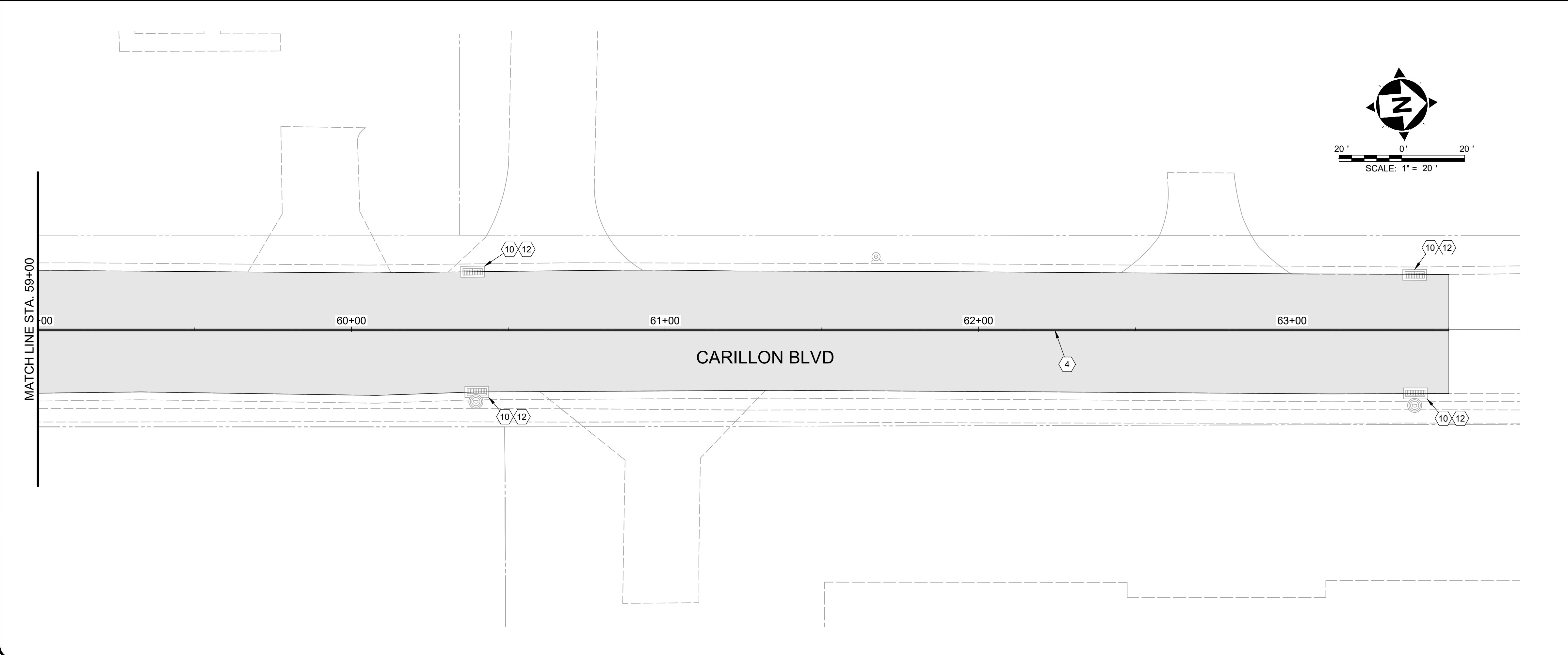
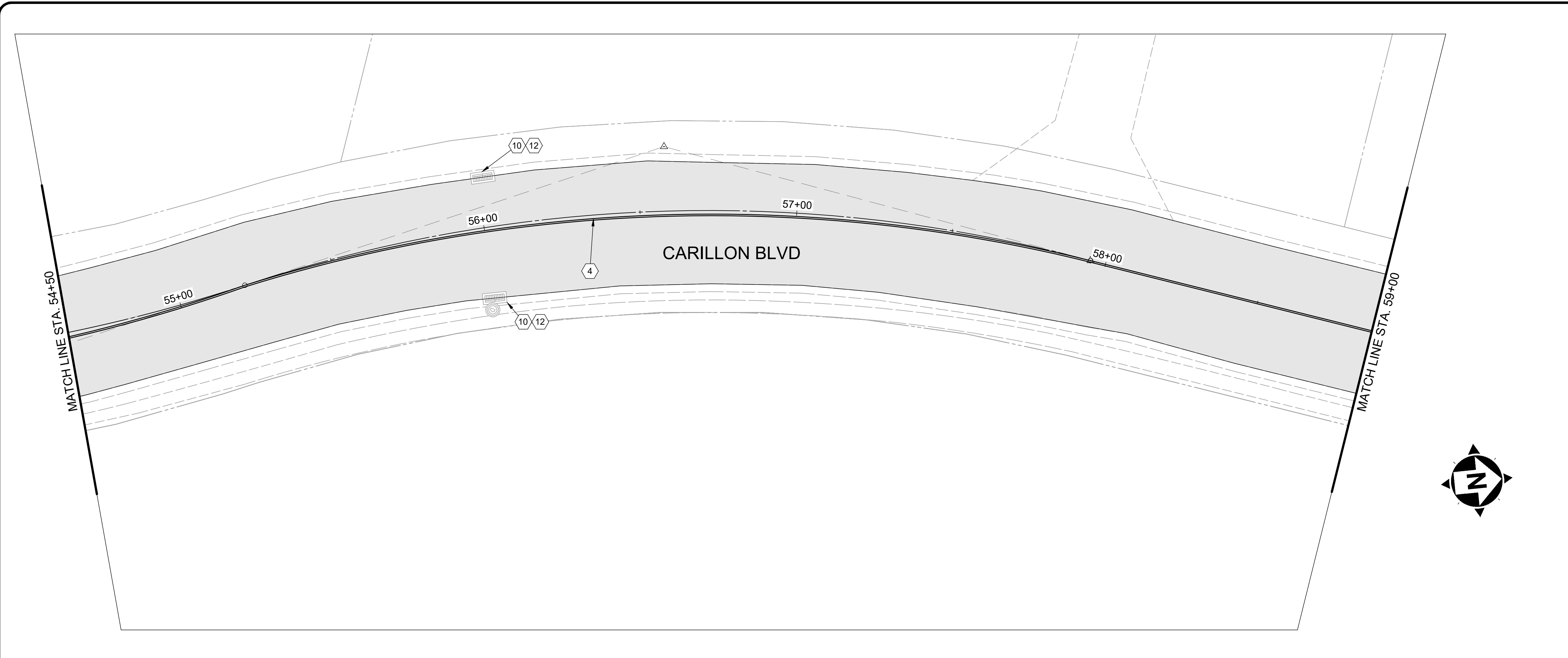
ISSUED FOR:	BID NO.	REVISION	DATE
ISSUE DATE: 4/15/2024			
SCALE: AS SHOWN			
DESIGNED BY: BHAU			
DRAWN BY: BHAU			
CHECKED BY: EMOR			



**2024 STREET PROGRAM**  
CITY OF FOREST PARK  
- HAMILTON COUNTY, OHIO -

**CARILLON 50-54.5**

PROJECT NO.	<b>240070</b>
DISCIPLINE	<b>CIVIL</b>
SHEET NAME	<b>P6</b>
SHEET	<b>8</b>
OF	<b>10</b>





HATCH LEGEND	
	PAVEMENT PLANING AND OVERLAY
	ITEM 608 - ADA CURB RAMP

- | NOTES |  |
|-------|--|
| 1.    | THE FINAL FULL DEPTH REPAIR AREAS WILL BE MARKED WHEN THE PLANING OPERATIONS HAVE BEEN COMPLETED.  |
| 2.    | ADJUSTMENTS TO VALVE BOXES, METERS OR OTHER ASSOCIATED GAS, ELECTRIC, TELEPHONE, WATER, OR CABLE FACILITIES, IF NECESSARY, SHALL BE CONSIDERED INCIDENTAL TO THE CONTRACT AND SHALL BE COMPLETED PER UTILITY OWNER REQUIREMENTS. |
| 3.    | ALL PAVEMENT MARKINGS ON CARILLON BLVD SHOULD BE MADE TO MATCH EXISTING MARKINGS.  |
| 4.    | RESTORE ALL DOWNSPOUT LINES IN CURB. A CONTINGENCY QUANTITY FOR ITEM 611 - DOWN SPOUT CONDUIT, MISC.: PVC SCHEDULE 40 PIPE, 3" HAS BEEN PROVIDED IN THE COST ESTIMATE.   |
| 5.    | FINAL LOCATIONS IF CURB AND GUTTER REMOVE AND REPLACE TO BE MARKED IN FIELD BY ENGINEER  |

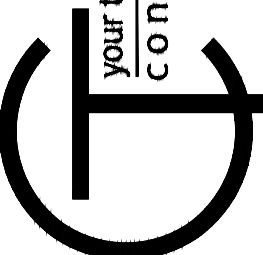
- | CONSTRUCTION NOTES |   |
|--------------------|---|
| ①                  | ITEM 611 - STORM MANHOLE ADJUSTED TO GRADE                                  |
| ②                  | ITEM SPECIAL - SANITARY MANHOLE ADJUSTED TO GRADE                           |
| ③                  | ITEM 644 - CHANNELIZING LINE, 8" SOLID WHITE                                |
| ④                  | ITEM 644 - CENTERLINE, 4" SOLID DOUBLE YELLOW                               |
| ⑤                  | ITEM 644 - STOP LINE, 24"   |
| ⑥                  | ITEM 644 - LANE ARROW, 96"  |
| ⑦                  | ITEM 644 - WORD ON PAVEMENT, 96"  |
| ⑧                  | ITEM 644 - DIAGONAL CROSSHATCH MARKINGS, 24" YELLOW                         |
| ⑨                  | ITEM 809 - STOP LINE RADAR DETECTION  |
| ⑩                  | ITEM 611 - FURNISH NEW CURB PLATE, D.G.I., AS PER PLAN                      |
| ⑪                  | ITEM 611 - FURNISH NEW CURB PLATE, S.G.I., AS PER PLAN                      |
| ⑫                  | ITEM 611 - FURNISH NEW CATCH BASIN FRAME AND TYPE "L" GRATE(S), AS PER PLAN |

STREET	CB-3 REBUILD	CB-3A REBUILD	CURB PLATE D.G.I.	CURB PLATE S.G.I.	FRAME & GRATE
CARILLON BLVD	0	0	10	0	20

FOR BID

your trusted advisor  
**consultants**

engineers  
architects  
planners



ISSUED FOR:	BID NO.	ISSUE DATE:	SCALE:	DESIGNED BY:	DRAWN BY:	CHECKED BY:
		4/15/2024	AS SHOWN	BHAU	BHAU	EMOR

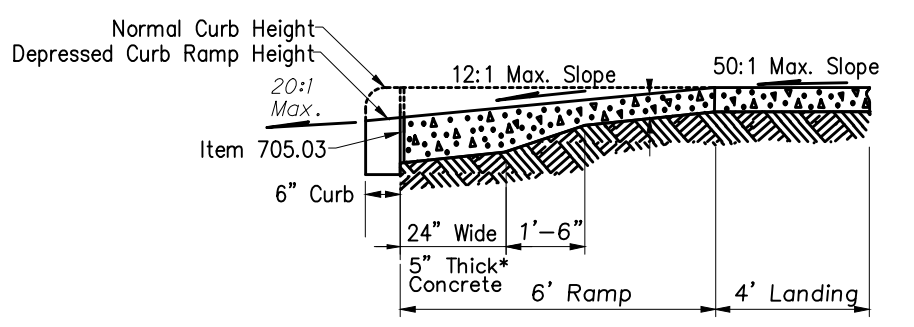
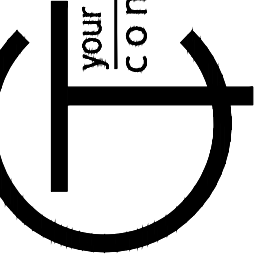
**2024 STREET PROGRAM**  
CITY OF FOREST PARK  
- HAMILTON COUNTY, OHIO -

**CARILLON 54.5-63.5**

PROJECT NO.	
<b>240070</b>	
DISCIPLINE	
<b>CIVIL</b>	
SHEET NAME	
<b>P7</b>	
SHEET	OF
<b>9</b>	<b>10</b>

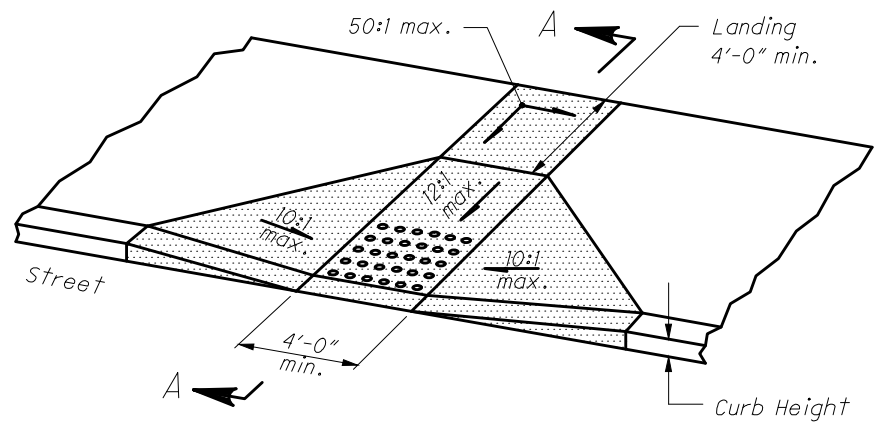
FOR BID

your trusted advisor  
engineers  
architects  
planners  
consultants



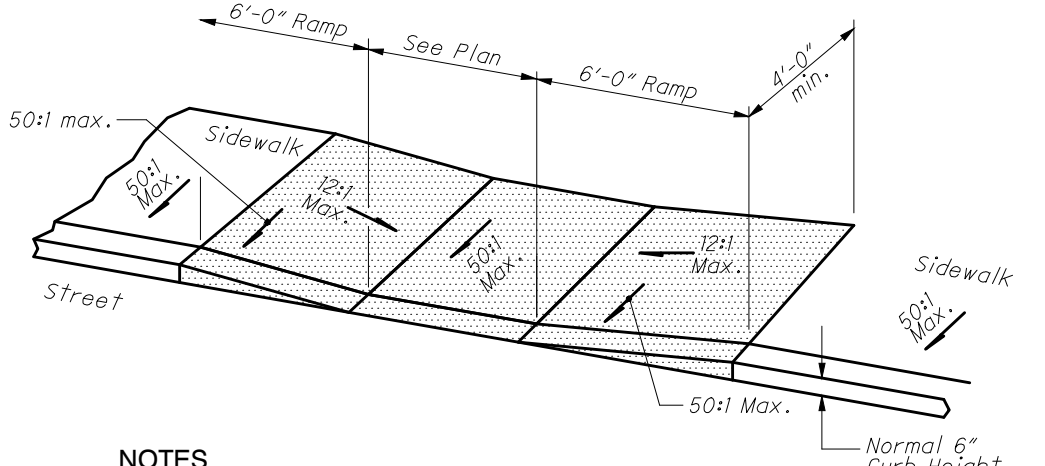
**SECTION A-A**

\*WHERE POSSIBLE, POUR RAMP AREA INTEGRAL WITH THE CURB. OTHERWISE USE 6" THICK WALK.



**CURB RAMP DETAILS**

N.T.S.

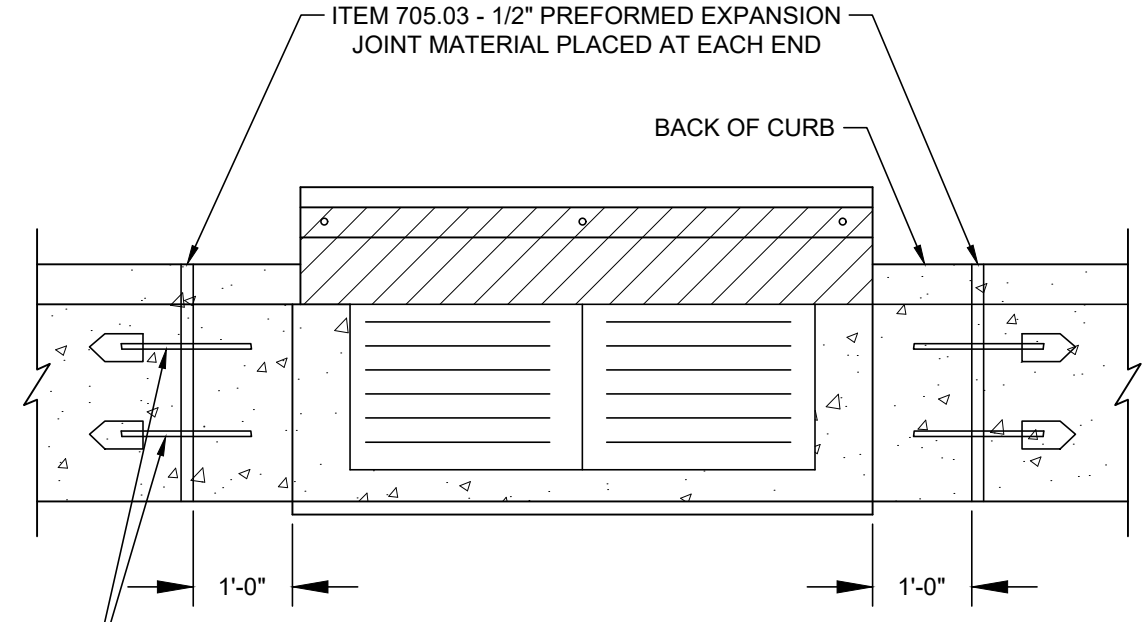


**NOTES**

**DRAINAGE:** CONTRACTOR IS TO ENSURE THE BASE OF EACH CONSTRUCTED CURB RAMP ALLOWS FOR PROPER DRAINAGE, WITHOUT EXCEEDING ALLOWABLE CROSS SLOPE OR RAMP SLOPES. VERTICAL CHANGE IN LEVEL EXCEEDING 1/8" BETWEEN THE 1) PAVEMENT AND GUTTER, AND 2) GUTTER AND RAMP, ARE NOT ALLOWED.

**TEXTURE:** TEXTURE CONCRETE SURFACES BY COARSE BROOMING TRANSVERSE TO THE RAMP SLOPES TO BE ROUGHER THAN THE ADJACENT WALK.

THE EDGE OF THE CURB SHALL BE FLUSH WITH THE EDGE OF THE ADJACENT PAVEMENT AND GUTTER AND SURFACE SLOPES THAT MEET GRADE BREAKS SHALL ALSO BE FLUSH.

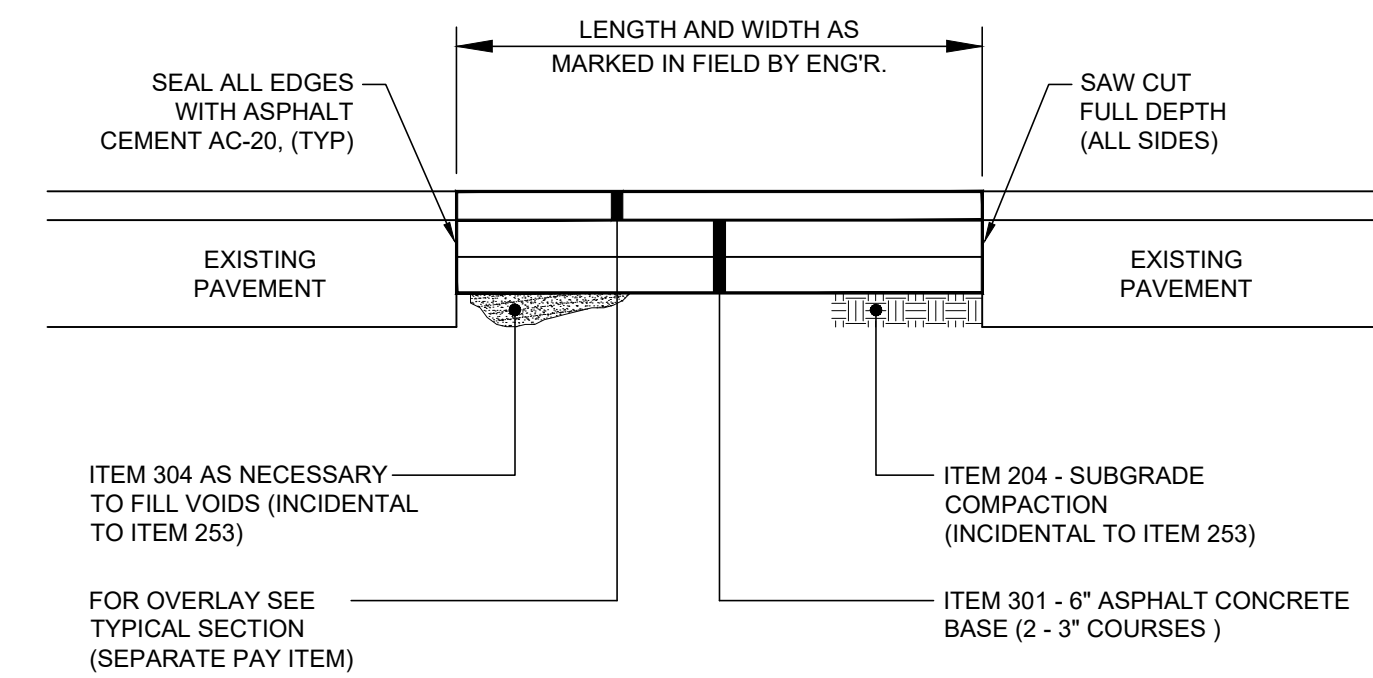


**CURB REPLACEMENT ADJACENT TO CATCH BASINS**

N.T.S.

PROVIDE 2 - 5/8" DIAMETER DOWELS, 18" LONG, DRILLED 9" MINIMUM INTO EXISTING CONCRETE CURB AT EACH END OF REPAIR

NOTE:  
1.) SEE ODOT STANDARD DRAWINGS CB-3 & CB-3A

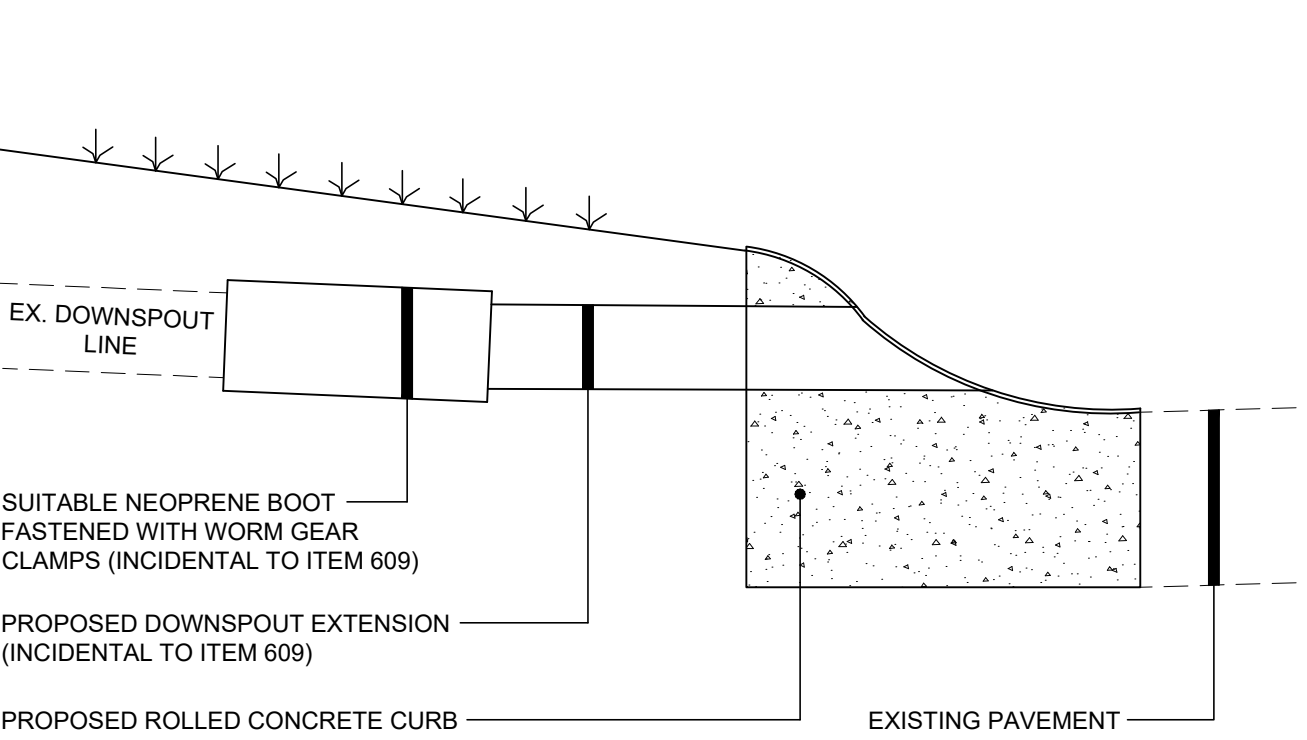


**NOTES:**

- 1.) A CONTINGENCY QUANTITY OF ITEM 253 - PAVEMENT REPAIR IS INCLUDED IN THE CONTRACT TO REPLACE ANY PAVEMENT / BASE AREAS AS REQUIRED PRIOR TO PAVING. THE CONTRACTOR SHALL REPAIR ONLY THOSE AREAS MARKED IN THE FIELD BY THE ENGINEER AFTER THE PLANING OPERATIONS.
- 2.) THE BASE REPAIR AREAS WILL BE MARKED BY THE ENGINEER PRIOR TO THE PLANING OPERATIONS TO OBTAIN INITIAL QUANTITIES AND AFTER THE PAVEMENT PLANING FOR THE FINAL AREAS TO BE REPAIRED.

**PAVEMENT REPAIR**

N.T.S.

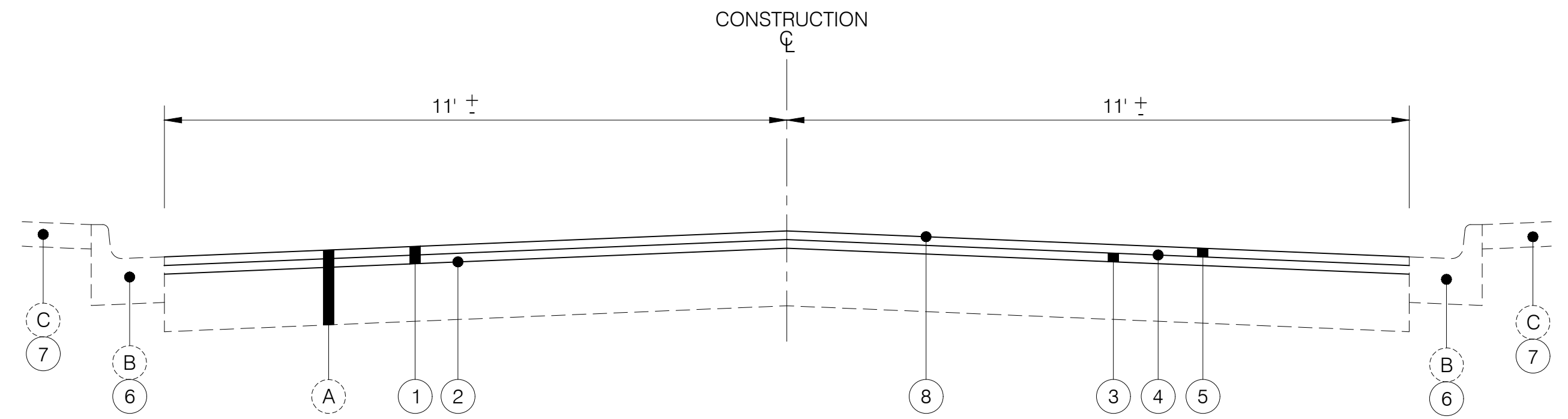


**NOTES:**

- 1.) 3" PVC PIPE SCH. 40, (SLOPED TO DRAIN) MAY BE CAST-IN-PLACE AT TIME OF CONSTRUCTION WITH 3" SLOT IN CURB. FOR INSTALLATION AFTER CURB IS CONSTRUCTED, THE CURB SLOT MUST BE SAW CUT (4.5" MAX. WIDTH) AND THE AREA FILLED WITH AN EPOXY CONCRETE. TYPE OF EPOXY CONCRETE TO BE APPROVED BY THE OWNER / ENGINEER BEFORE USED BY THE CONTRACTOR.
- 2.) THE COST FOR THE LABOR AND MATERIAL NECESSARY TO REPLACE THE DOWNSPOUT LEADER SHALL BE INCIDENTAL TO THE PERTINENT CURB REPLACEMENT ITEM FOR EACH DOWNSPOUT REPLACED THREE (3) FEET IN LENGTH. TOPSOIL AND SEEDING SHALL BE INCIDENTAL IN COSTS.
- 3.) IF AT THE DIRECTION OF THE ENGINEER, MORE THAN 3' OF DOWNSPOUT DRAIN NEEDS TO BE REPLACED, THE ADDITIONAL WORK SHALL BE PAID ON A PER FOOT BASIS UNDER ITEM 603 - 3" PVC PIPE SCH. 40. ANY NECESSARY VERTICAL OR HORIZONTAL BENDS SHALL BE INCLUDED AND PAID FOR ON THE ABOVE BASIS.

**ITEM 611 - DOWNSPOUT EXTENSION**

N.T.S.



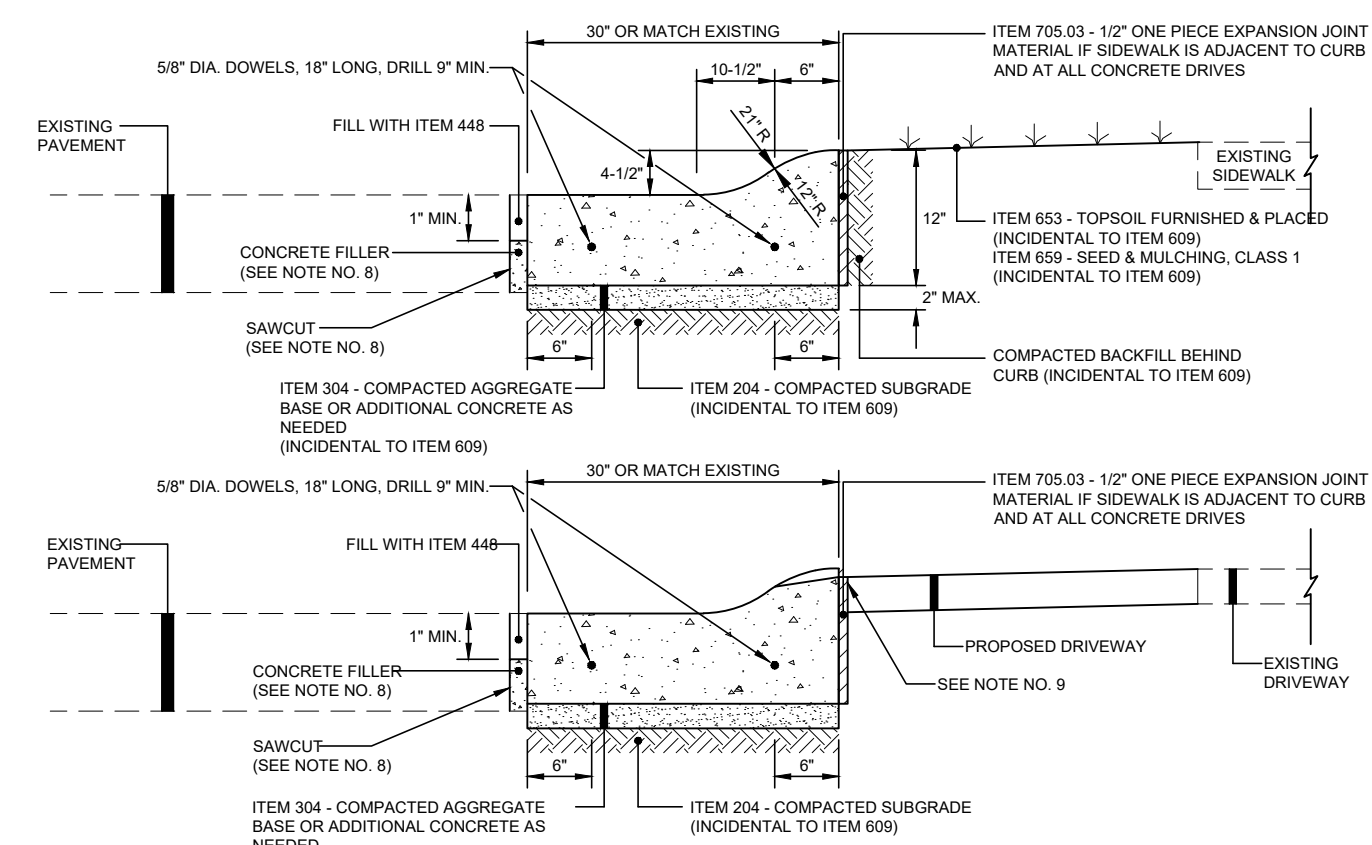
**TYPICAL SECTION - HAVENSPORT DR + RAPHAEL PL**

N.T.S.

- 1) ITEM 254 - PAVEMENT PLANING, ASPHALT CONCRETE (2-1/2")
- 2) ITEM 441 - ASPHALT CONCRETE MISC: STRESS ABSORBING MEMBRANE (SAM)
- 3) ITEM 441 - ASPHALT CONCRETE INTERMEDIATE COURSE, TYPE 2, PG64-22 (1")
- 4) ITEM 407 - TACK COAT FOR INTERMEDIATE COURSE (@ 0.06 Gals/SY)
- 5) ITEM 441 - ASPHALT CONCRETE SURFACE COURSE, TYPE 1, PG64-22 (1-1/2")
- 6) ITEM 609 - CURB, TYPE 2 REPLACEMENT, SEE PLAN FOR LOCATIONS
- 7) ITEM 608 - CONCRETE WALK/DRIVE REPLACEMENT, SEE PLAN FOR LOCATIONS
- 8) ITEM SPL - ASPHALT CONCRETE MISC., ASPHALT REJUVENATING AGENT

**EXISTING LEGEND**

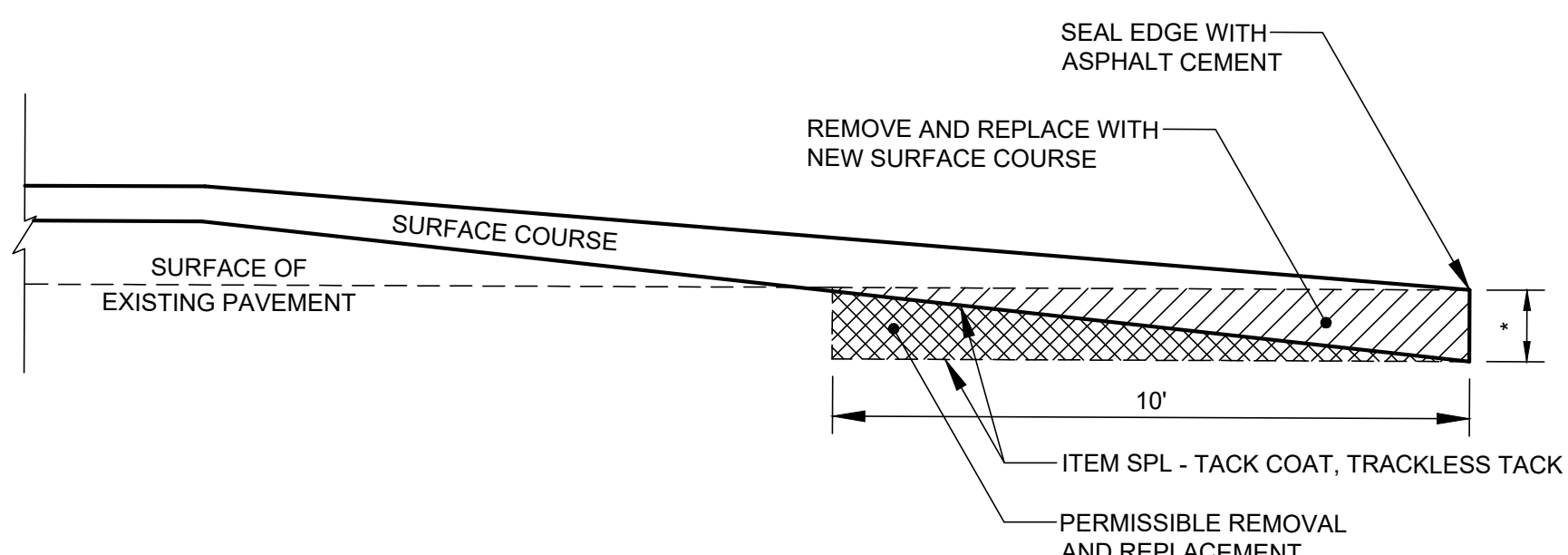
- A) EXISTING ASPHALT PAVEMENT
- B) EXISTING CONCRETE CURB
- C) EXISTING CONCRETE WALK/DRIVE



**CURB AND GUTTER**

N.T.S.

- 1.) CONCRETE SHALL BE 4000 PSI @ 28 DAYS WITH 5% MIN. TO 8% MAX. ENTRAINED AIR.
- 2.) MAINTAIN SPACING OR EXISTING EXPANSION AND CONTRACTION JOINTS.
- 3.) THE COST OF ANY REQUIRED YARD RESTORATION WHICH WOULD INCLUDE TOPSOIL AND/OR SEEDING AND MULCHING SHALL BE INCIDENTAL TO ITEM 609. CONCRETE CURB AND GUTTER, REMOVE AND REPLACE.
- 4.) THE MIN. CURB AND GUTTER REPLACEMENT SHALL BE 3'-0" WITH EXPANSION MATERIAL AND DOWELS PLACED ON AT LEAST ONE END OF THE REPAIRED SECTION.



\* REFER TO TYPICAL SECTION FOR PLANING DEPTHS.  
\* BUTT JOINT INCIDENTAL TO ASPHALT SURFACE COURSE.

**ITEM 254 - PAVEMENT PLANING, ASPHALT CONCRETE**

**TYPICAL BUTT JOINT DETAIL**

N.T.S.

- 1) ITEM 254 - PAVEMENT PLANING, ASPHALT CONCRETE (2-1/2")
- 2) ITEM 441 - ASPHALT CONCRETE MISC: STRESS ABSORBING MEMBRANE (SAM)
- 3) ITEM 441 - ASPHALT CONCRETE INTERMEDIATE COURSE, TYPE 2, PG64-22 (1")
- 4) ITEM 407 - TACK COAT FOR INTERMEDIATE COURSE (@ 0.06 Gals/SY)
- 5) ITEM 441 - ASPHALT CONCRETE SURFACE COURSE, TYPE 1, PG64-22 (1-1/2")
- 6) ITEM 609 - CURB, TYPE 2 REPLACEMENT, SEE PLAN FOR LOCATIONS
- 7) ITEM 608 - CONCRETE WALK/DRIVE REPLACEMENT, SEE PLAN FOR LOCATIONS
- 8) ITEM SPL - ASPHALT CONCRETE MISC., ASPHALT REJUVENATING AGENT

**EXISTING LEGEND**

- A) EXISTING ASPHALT PAVEMENT
- B) EXISTING CONCRETE CURB
- C) EXISTING CONCRETE WALK/DRIVE

**TYPICAL SECTION - CARILLION BLVD**

N.T.S.

DATE	REVISION	NO	BID	ISSUED FOR:	SCALE:	DESIGNED BY:	DRAWN BY:	CHECKED BY:
			4/15/2024	AS SHOWN	BHAU	BHAU	EMOR	

2024 STREET PROGRAM  
CITY OF FOREST PARK  
- HAMILTON COUNTY, OHIO -

**DETAILS**

PROJECT NO.	240070
DISCIPLINE	CIVIL
SHEET NAME	DET
SHEET	10
OF	10