

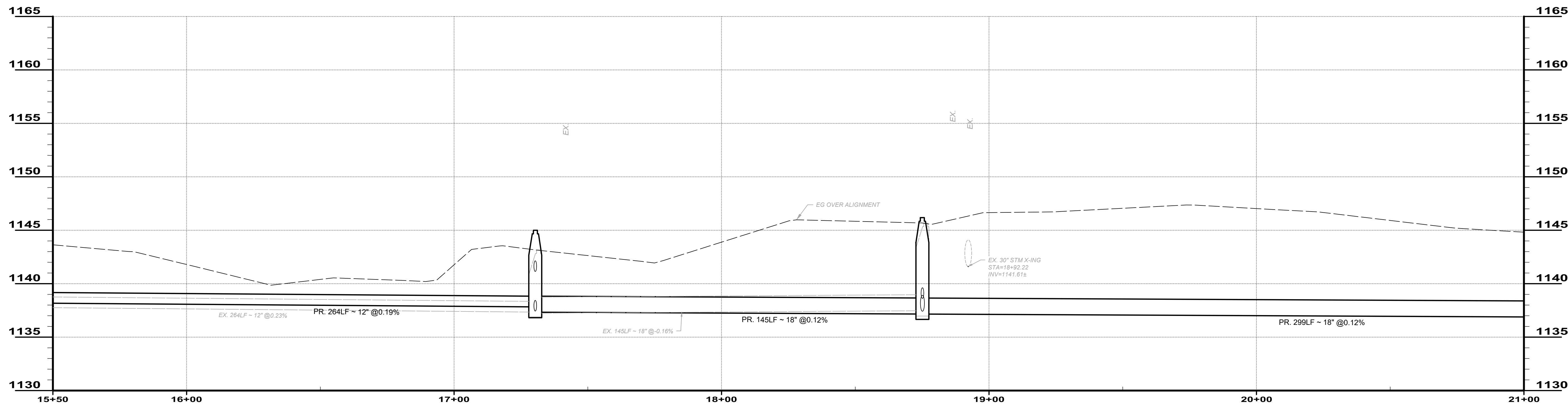
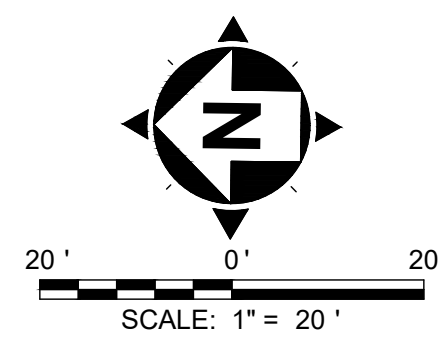
**PROPOSED IMPROVEMENTS NOTES:**

1. PROPOSED PIPE TO BE INSTALLED IN SAME TRENCH OF THE EXISTING SANITARY SEWER AS SHOWN ON PLANS. REMOVAL OF EXISTING SEWER LINE IS INCIDENTAL TO PROPOSED PIPE.
2. PROPOSED PIPE TO BE PLACED USING THE PIPE BEDDING DETAIL AS SHOWN ON SHEET 3

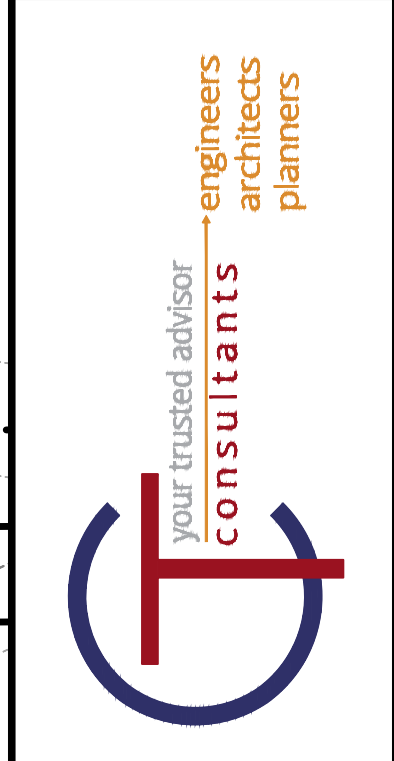
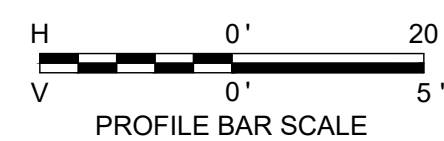
**SANITARY SEWER CLEARANCE NOTES:**

1. SANITARY SEWERS WILL BE MAINTAINED AT A HORIZONTAL SEPARATION OF 10 FT FROM WATERLINES.
2. SANITARY SEWERS WILL BE MAINTAINED AT A VERTICAL SEPARATION OF 18 INCHES FROM WATERLINES.

**PLAN VIEW  
STA 15+50 TO STA 21+00**



**PROFILE  
STA 15+50 TO STA 21+00**



ISSUED FOR:	FINAL	NO	REVISION	DATE
ISSUE DATE:	9/16/2021			
SCALE:	AS NOTED			
DESIGNED BY:	EWS			
DRAWN BY:	EWS			
CHECKED BY:	SSA			

**VILLAGE OF HARTVILLE  
MAIN TRUNK SANITARY  
SEWER REPLACEMENT**  
VILLAGE OF HARTVILLE, OHIO  
STARK COUNTY  
PLAN & PROFILE - STA 15+50 TO STA 21+00

PROJECT NO.	210229
DISCIPLINE	CIVIL
SHEET NAME	10C-02
SHEET	OF
6	11