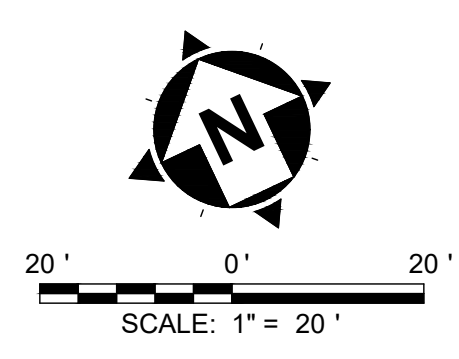
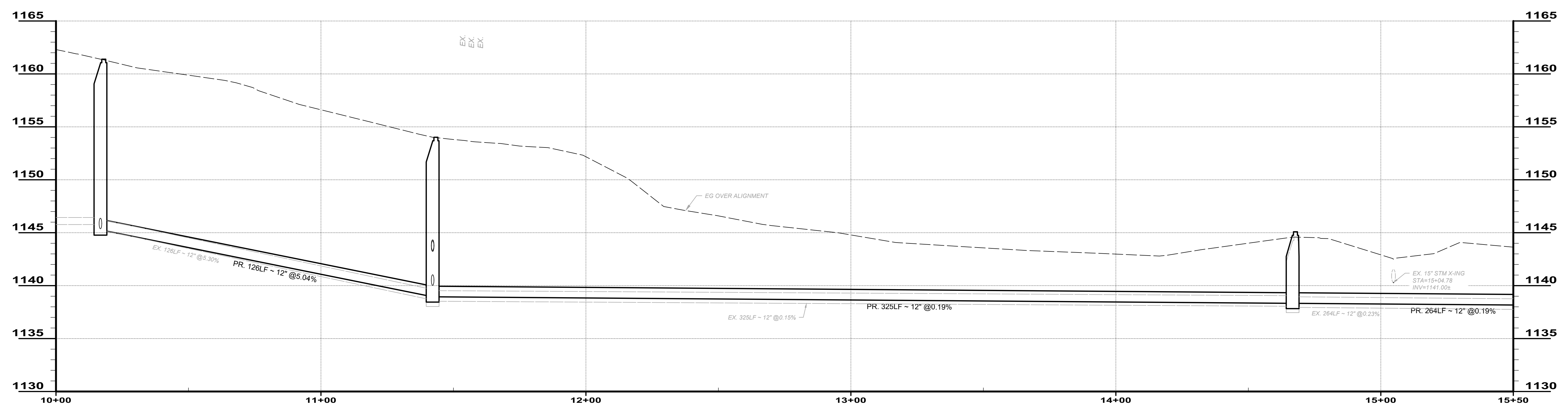


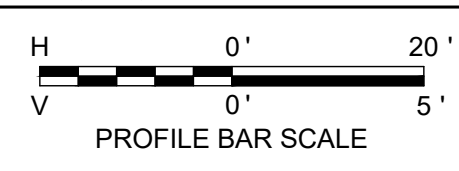
PLAN VIEW
STA 10+00 TO STA 15+50



- PROPOSED IMPROVEMENTS NOTES:**
1. PROPOSED PIPE TO BE INSTALLED IN SAME TRENCH OF THE EXISTING SANITARY SEWER AS SHOWN ON PLANS. REMOVAL OF EXISTING SEWER LINE IS INCIDENTAL TO PROPOSED PIPE.
 2. PROPOSED PIPE TO BE PLACED USING THE PIPE BEDDING DETAIL AS SHOWN ON SHEET 3
- SANITARY SEWER CLEARANCE NOTES:**
1. SANITARY SEWERS WILL BE MAINTAINED AT A HORIZONTAL SEPARATION OF 10 FT FROM WATERLINES.
 2. SANITARY SEWERS WILL BE MAINTAINED AT A VERTICAL SEPARATION OF 18 INCHES FROM WATERLINES.



PROFILE
STA 10+00 TO STA 15+50



NO	REVISION	DATE

ISSUED FOR:	ISSUE DATE:	SCALE:	DESIGNED BY:	DRAWN BY:	CHECKED BY:
FINAL	9/16/2021	AS NOTED	EMS	EMS	SSA

VILLAGE OF HARTVILLE
MAIN TRUNK SANITARY
SEWER REPLACEMENT
 STARK COUNTY
 VILLAGE OF HARTVILLE, OHIO
 PLAN & PROFILE - STA 10+00-STA 15+50

PROJECT NO.	210229
DISCIPLINE	CIVIL
SHEET NAME	10C-01
SHEET	5
OF	11